

# NINETY7FIFTY

ON THE PARK

9750 CRESCENT PARK CIRCLE | ORLAND PARK, IL



## 1,200 SF OF PREMIER RETAIL SPACE AVAILABLE IN THE HEART OF ORLAND PARK

**NEWMARK**

James Schutter	312.224.3210	james.schutter@nmrk.com
Larry Kling	312.224.3199	larry.kling@nmrk.com
Nick Garlick	312.224.3235	nick.garlick@nmrk.com

[nmrk.com](http://nmrk.com) | 500 W Monroe Street, Suite 2900, Chicago, IL 60661

The information contained herein has been obtained from sources deemed reliable but has not been verified and no guarantee, warranty or representation, either express or implied, is made with respect to such information. Terms of sale or lease and availability are subject to change or withdrawal without notice.



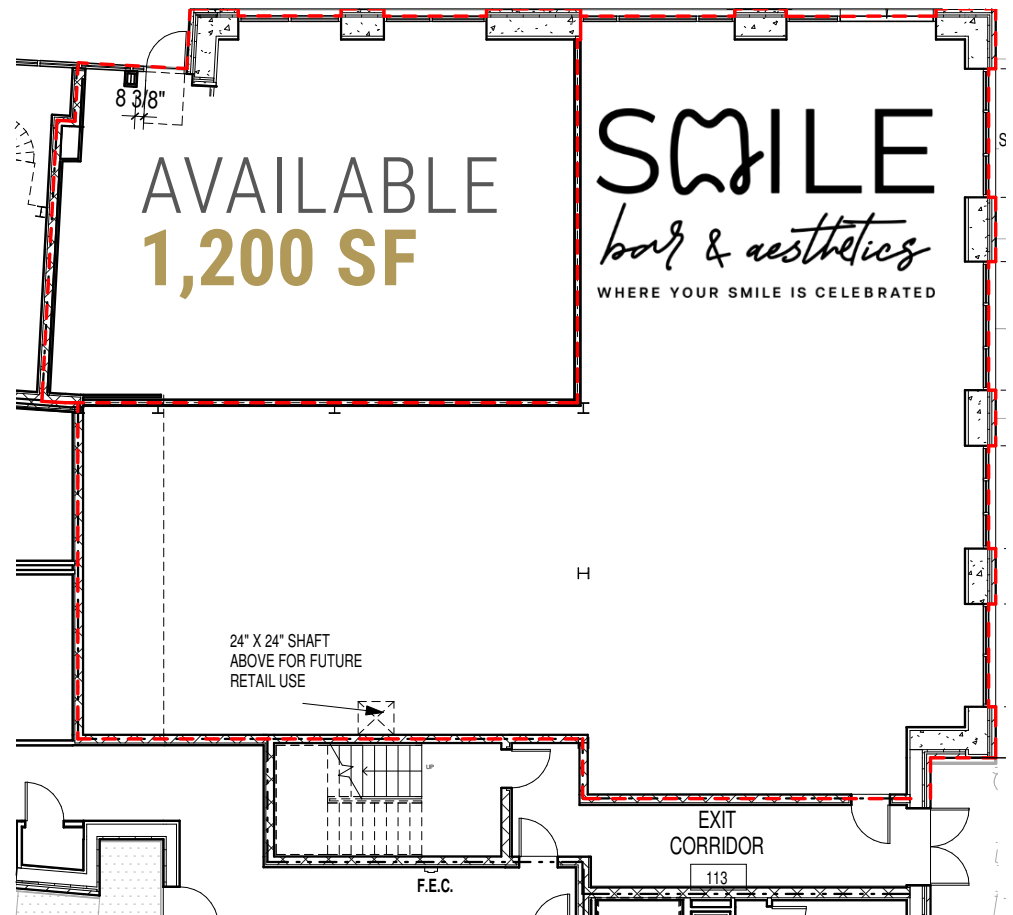
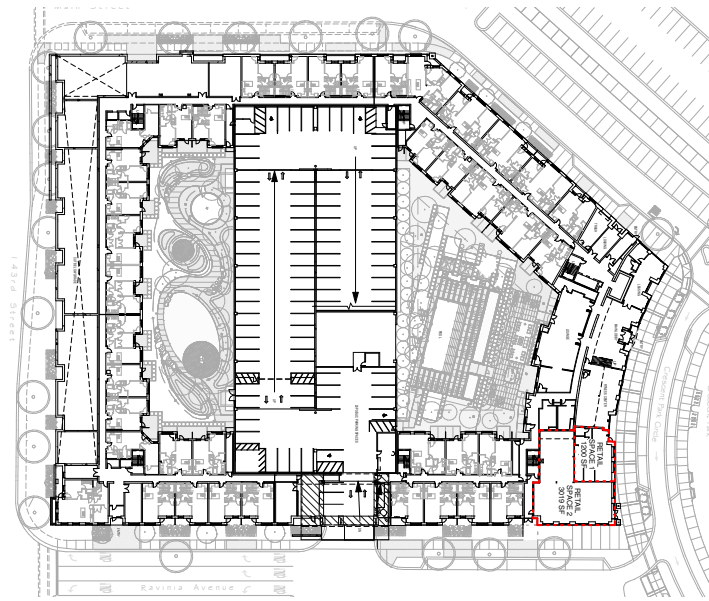
NEWMARK

# PROPERTY **FEATURES**

- **Ninety7Fifty on the Park** is a premium, suburban mixed-use development situated directly in the heart of Orland Park's new downtown
- Adjacent to 143rd Street Metra Train Station (2.5 million riders per year), Crescent Park and University of Chicago Hospital Development
- Full amenity rental building with 295 upscale apartments
- Beautiful ground floor end-cap retail space with ceiling to floor windows
- Heavy daytime traffic with 42,300 cpd on LaGrange Road and 21,200 cpd on 143rd Street



**NEWMARK**



# AREA DEMOGRAPHICS

	3 MILE	5 MILE	7 MILE
Residential Population	59,926	155,241	310,670
Daytime Population	58,797	136,380	287,609
Median HH Income	\$89,530	\$87,940	\$78,325
Median Age	45.6	45.3	42.6



NEWMARK

