

THE MARQUETTE BUILDING

Racine, Wisconsin 53404



1101 Mound Ave., Racine Flex / Warehouse For Lease

Exclusive Leasing Agent:
Protect Realty
128 Newberry Ave.
Libertyville, IL 60048
Wis. Lic. 58760-90

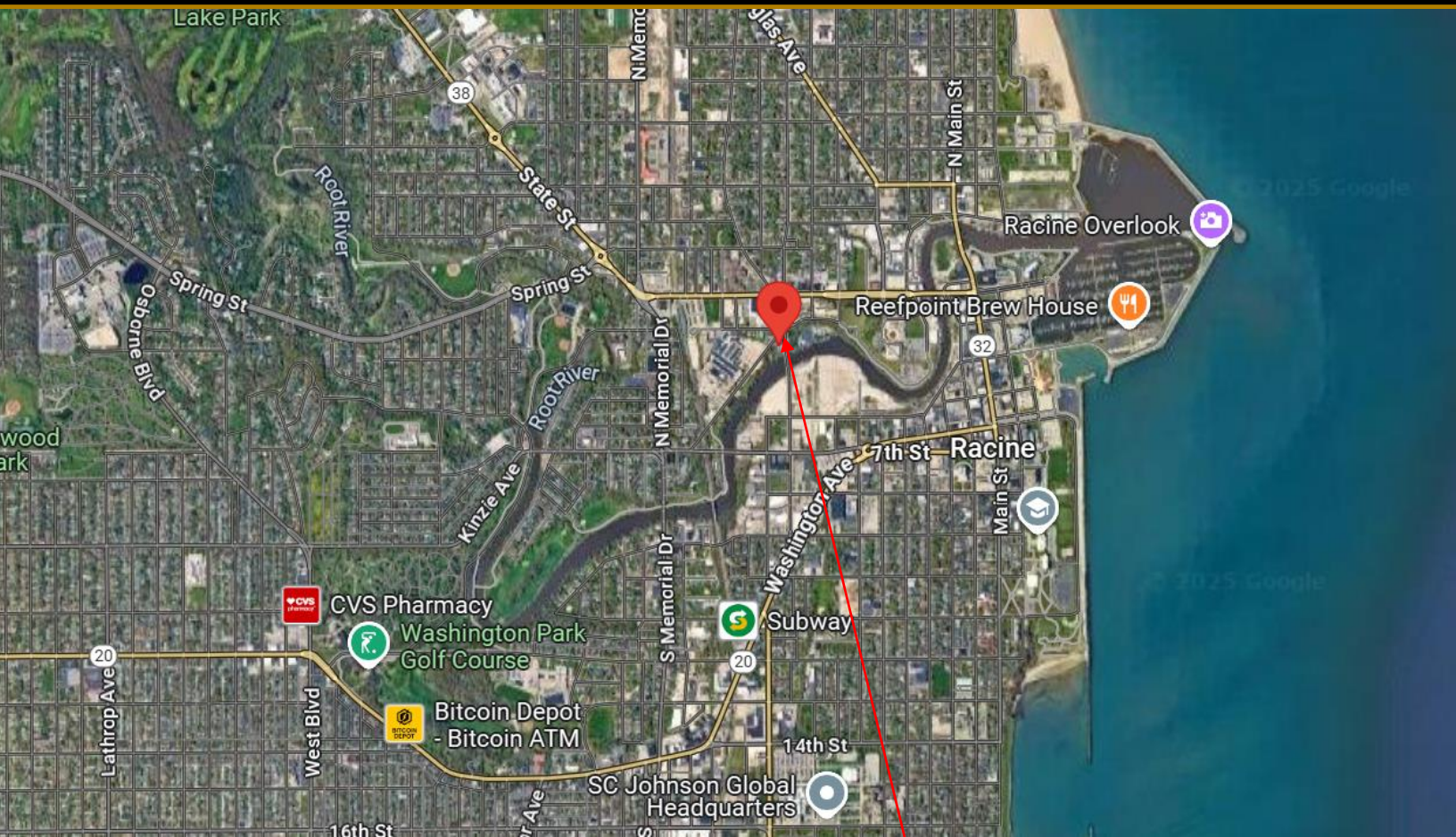
Tim Hart
Founder/Managing
Broker
847 924 5864 direct
tim@protectrealty.com

PROTECT  REALTY

1101 MOUND AVE. > THE MARQUETTE BUILDING



LOCATION & BUILDING HIGHLIGHTS



THE MARQUETTE

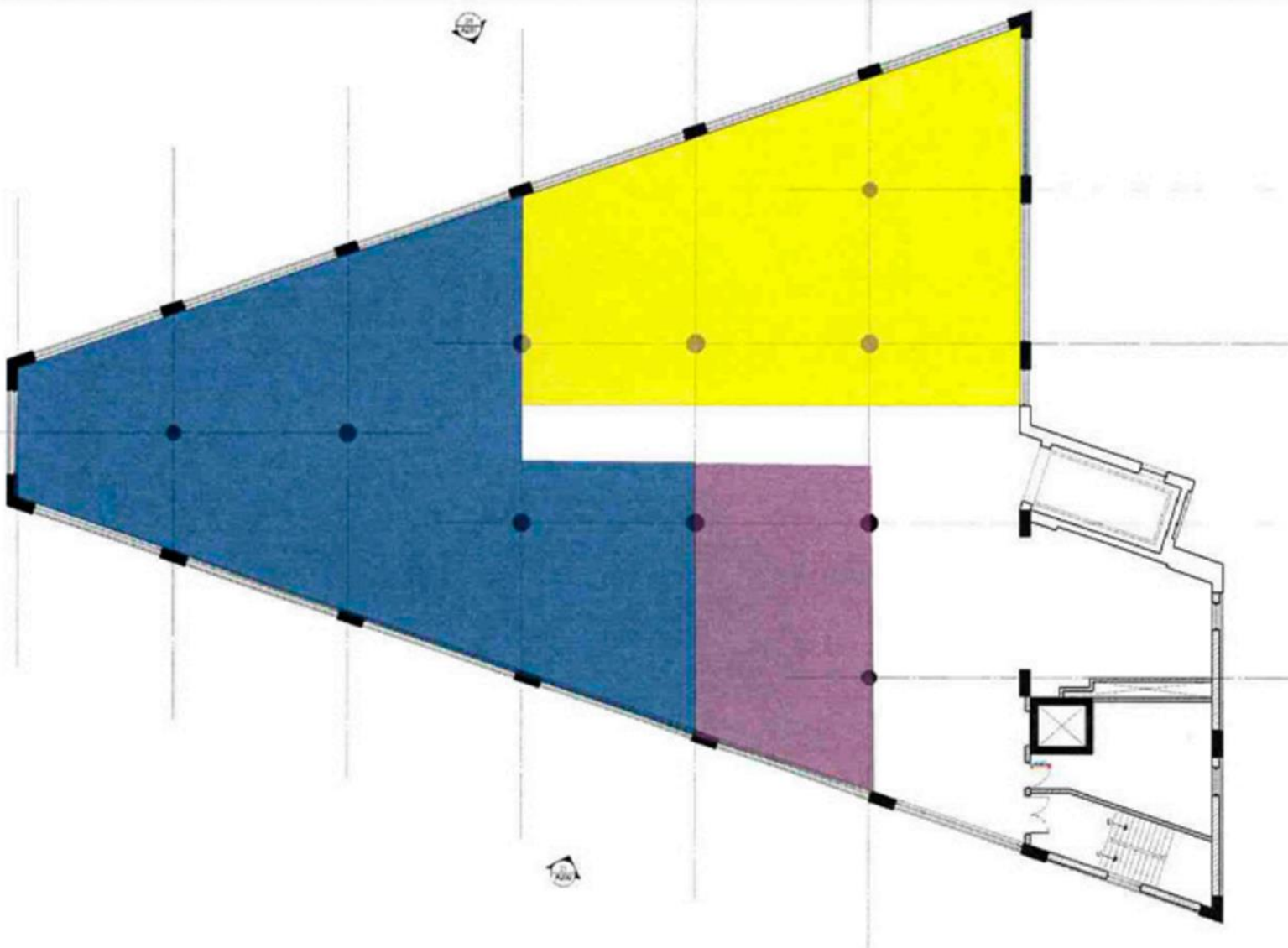
- Built in 1922/Renovated 2017
- Approximately 55,000 SF of space over 5 levels, including LL
- Significant improvements underway at the building/property
- Oversized freight elevator
- Floors approx. 12 foot ceiling heights
- Close to downtown Racine and harbor. Beautiful setting along the Root River



1101 MOUND AVE. > THE MARQUETTE BUILDING



Typical Floor Plan 11,000 SF DIVISIBLE



CALL TO DISCUSS PRICING

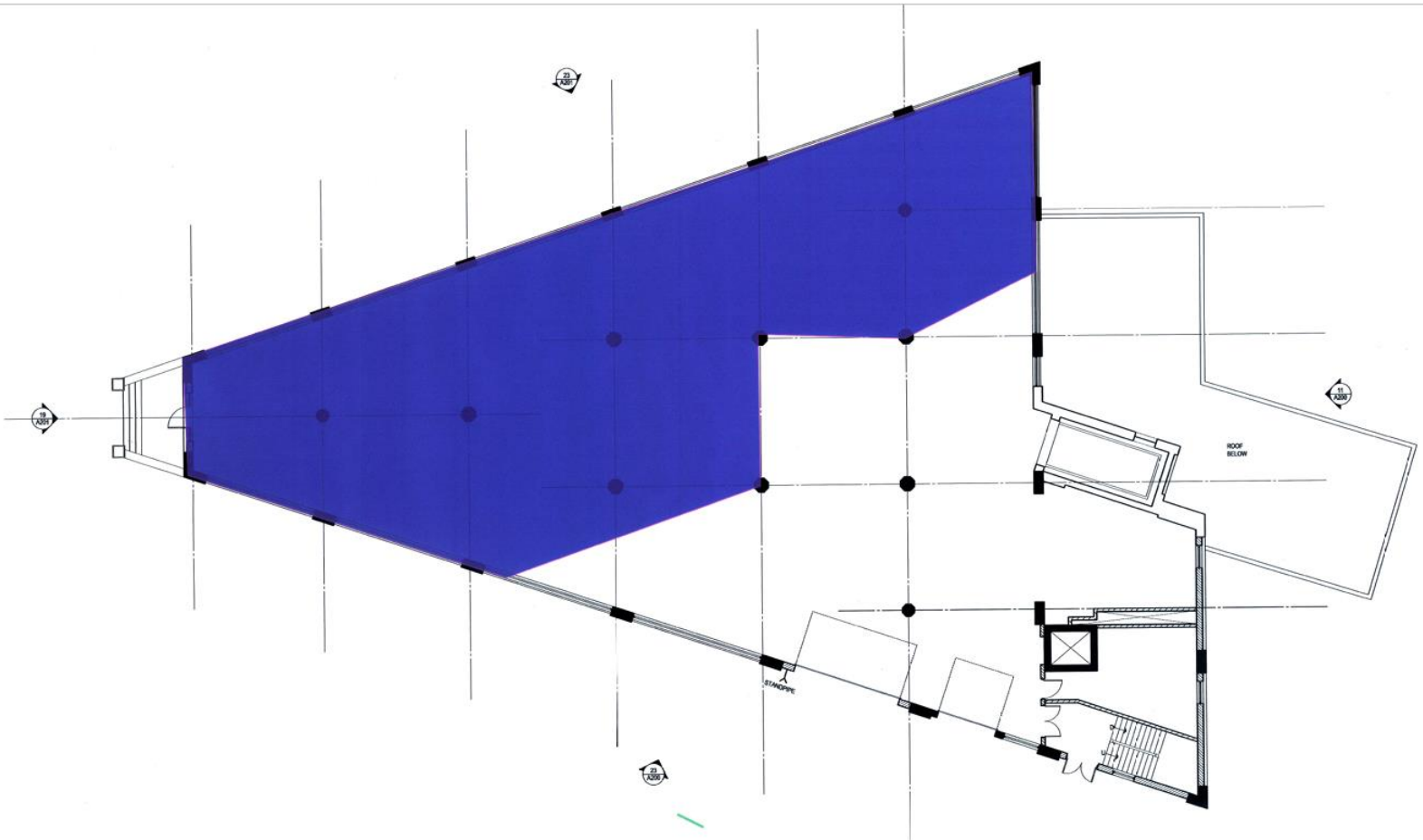
1101 MOUND AVE. > THE MARQUETTE BUILDING

22,000 SF Available Storage

Floors 4 and 5



4th Floor and 5th Floor General Plan

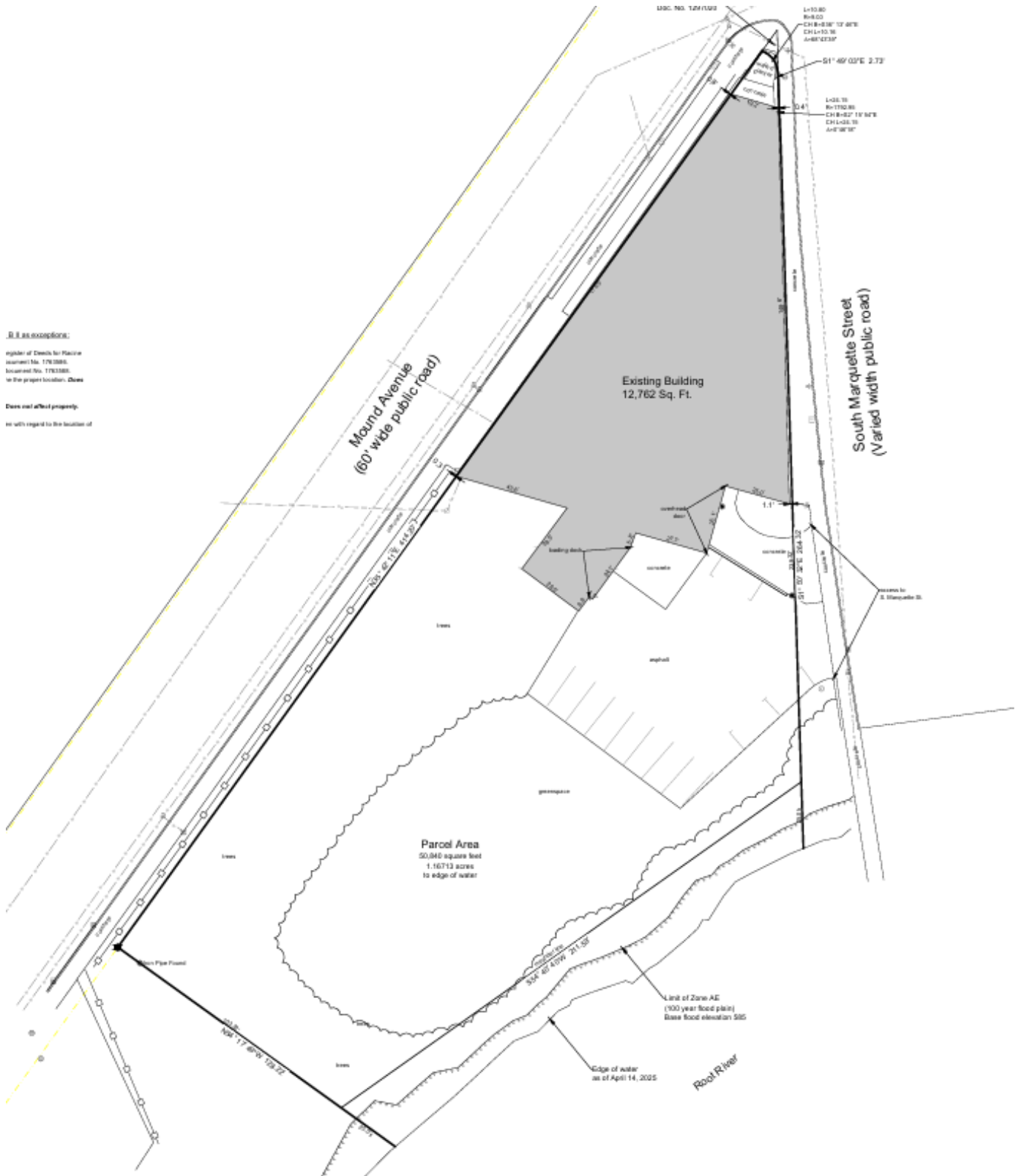


CALL TO DISCUSS PRICING

1101 MOUND AVE. > THE MARQUETTE BUILDING



SITE SURVEY



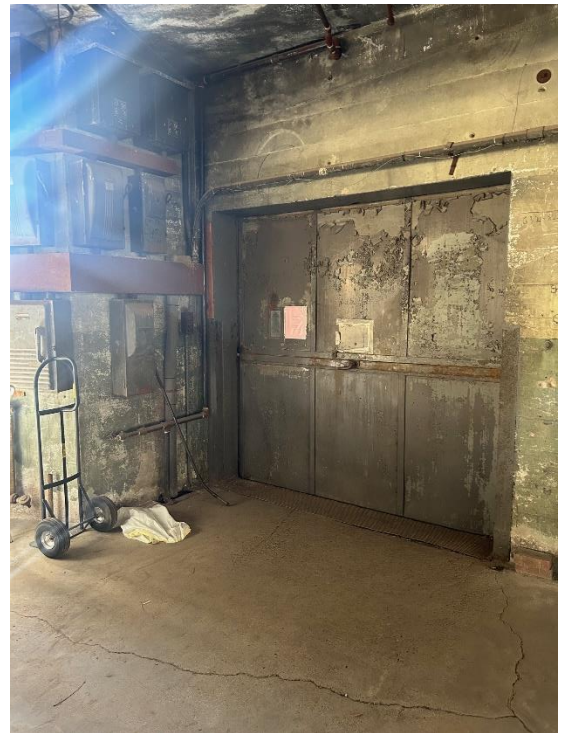
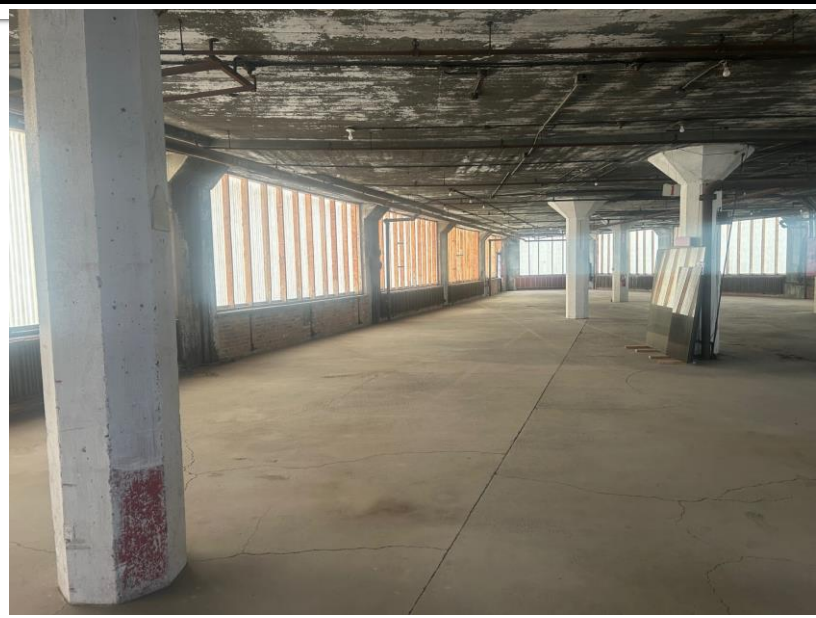
As an exception:
register of Deeds for Marine
located No. 176288.
located No. 176388.
in the proper location. Done

Does not affect property:
we with regard to the location of

1101 MOUND AVE. > THE MARQUETTE BUILDING GENERAL PICTURES

TIM HART
847-924-5864

TIM@PROTECTREALTY.COM



TIM HART
847-924-5864
TIM@PROTECTREALTY.COM

PROTECT  REALTY

www.ProtectRealty.com