

FOR LEASE > OFFICE BUILDING

9200 NE Barry Road

KANSAS CITY, MISSOURI



Full Service Rent:

\$22.00 PSF

PROPERTY FEATURES

- > Highly visible location
- > Convenient access to I-35, I-435 and Highway 291
- > Numerous amenities close by
- > 3,738 RSF available on the first floor;
 - > Suite 100: 2,831 RSF
 - > Suite 110: 907 RSF
- > Negotiable improvement allowance

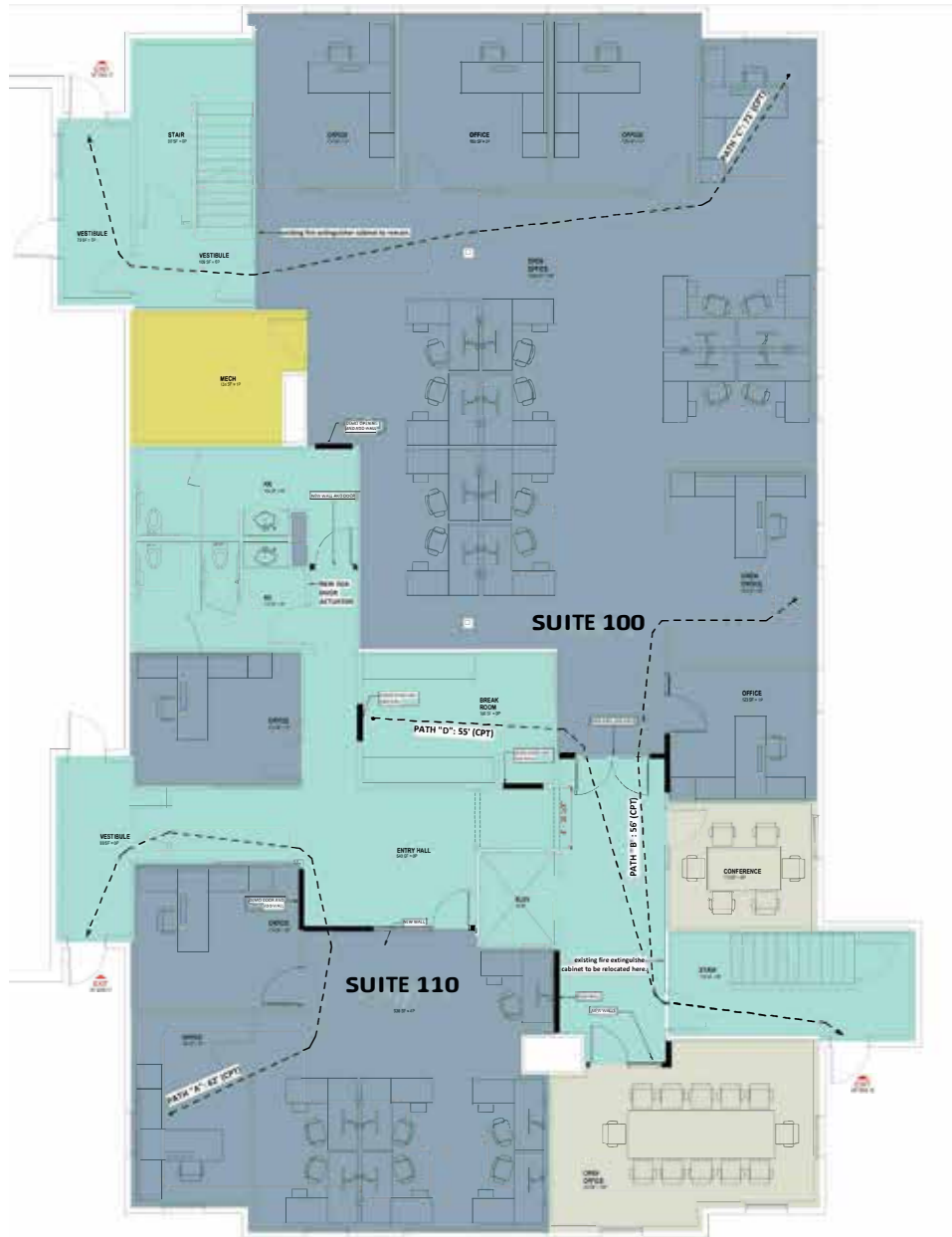
Colliers
INTERNATIONAL

MATT STOVER
+1 816 556 1116
KANSAS CITY, MO
matt.stover@colliers.com

PAT COPPINGER
+1 816 556 1110
KANSAS CITY, MO
pat.coppinger@colliers.com

COLLIERS INTERNATIONAL
4520 Main Street, Suite 1000
Kansas City, MO 64111
www.colliers.com

FIRST FLOOR PLAN



Contact Us:

MATT STOVER
+1 816 556 1116
KANSAS CITY, MO
matt.stover@colliers.com

PAT COPPINGER
+1 816 556 1110
KANSAS CITY, MO
pat.coppinger@colliers.com

COLLIERS INTERNATIONAL
4520 Main Street, Suite 1000
Kansas City, MO 64111
www.colliers.com

FOR LEASE > 9200 NE BARRY ROAD, KANSAS CITY, MISSOURI



Contact Us:

MATT STOVER
+1 816 556 1116
KANSAS CITY, MO
matt.stover@colliers.com

PAT COPPINGER
+1 816 556 1110
KANSAS CITY, MO
pat.coppinger@colliers.com

COLLIERS INTERNATIONAL
4520 Main Street, Suite 1000
Kansas City, MO 64111
www.colliers.com



Colliers
INTERNATIONAL

This document has been prepared by Colliers International for advertising and general information only. Colliers International makes no guarantees, representations or warranties of any kind, expressed or implied, regarding the information including, but not limited to, warranties of content, accuracy and reliability. Any interested party should undertake their own inquiries as to the accuracy of the information. Colliers International excludes unequivocally all inferred or implied terms, conditions and warranties arising out of this document and excludes all liability for loss and damages arising there from. This publication is the copyrighted property of Colliers International and/or its licensor(s). © 2020. All rights reserved.