

PACIFIC BEACH

1245 Garnet Ave, San Diego, CA 92109

AVAILABLE

- Up to 3,000 sf endcap (Divisible)
- Ample parking (Unusual for Trade Area)

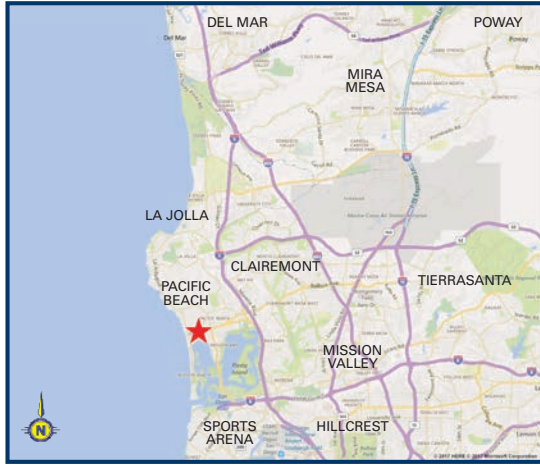
FEATURES

- Heart of Pacific Beach Trade Area
- Proposed remodel
- Pole Sign for exposure/branding
- Patio Available

AREA RETAILERS (N.A.P.)



JUST SIGNED!



DEMOGRAPHICS (2018)	
	2 Mile
Population:	55,927
Ave HH Income:	\$120,917



This information is deemed reliable, but not guaranteed. All information should be independently verified for its accuracy and completeness before relying upon it.



Contact Information

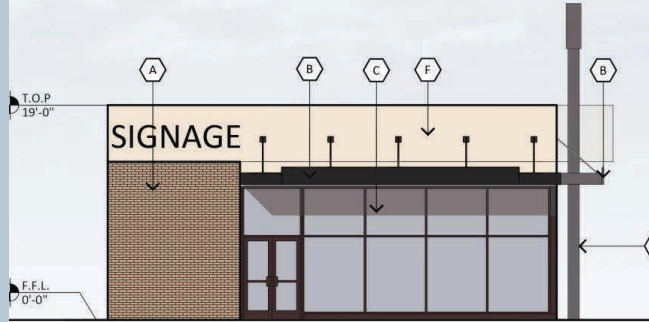
Gene Mello
gmello@epsteensd.com
Lic #01909763

Joe Wojdowski
jwojdowski@epsteensd.com
Lic #01237995



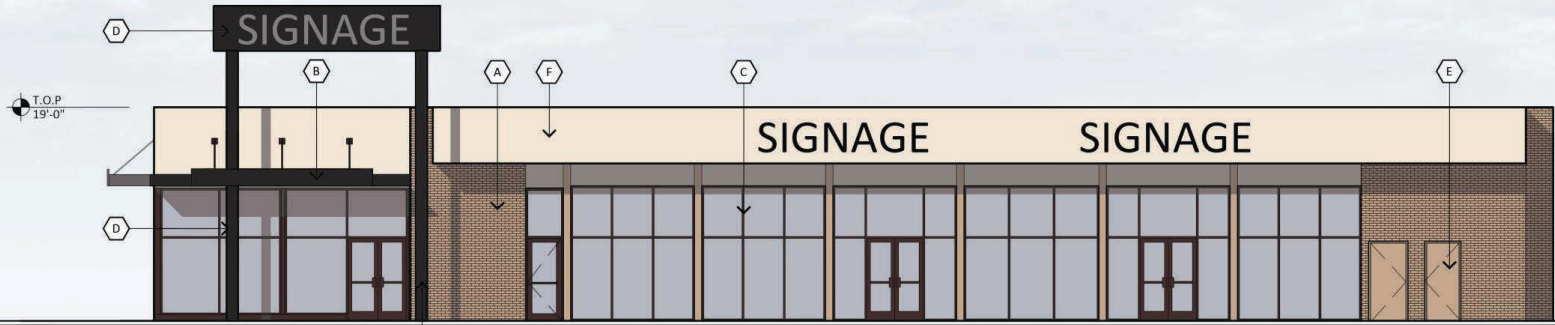
1245 Garnet Avenue

NORTH ELEVATION



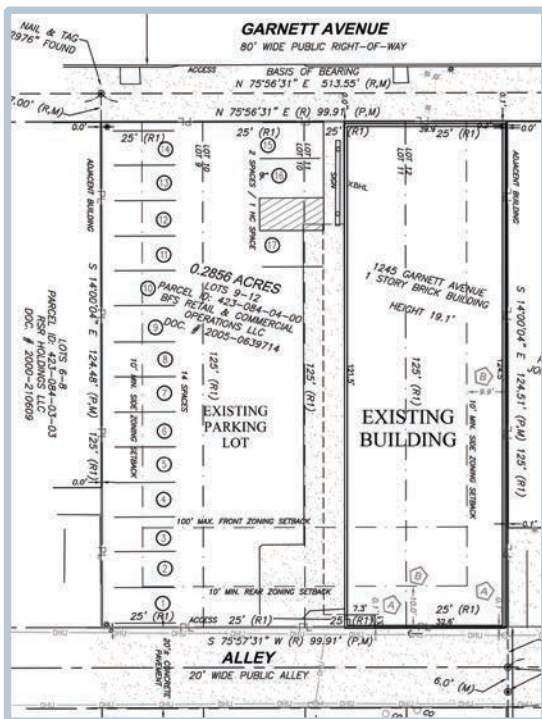
+/- 3,000 SF

WEST ELEVATION

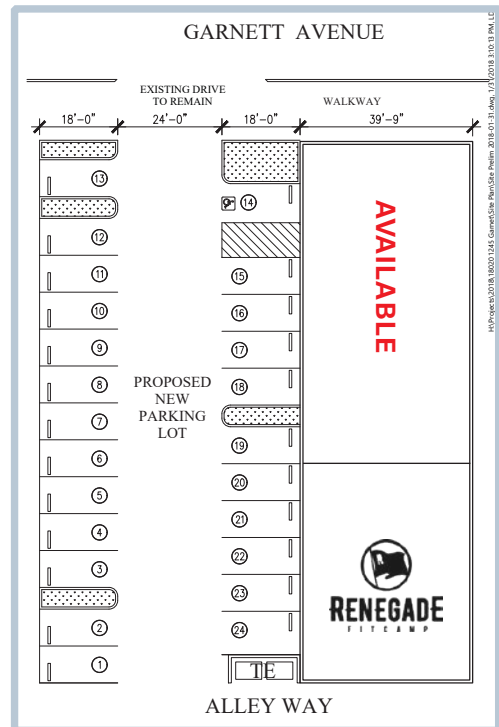


Site Plan

Existing Site Plan



Proposed Site Plan



PACIFIC BEACH

1245 Garnet Ave, San Diego, CA 92109

Aerial



PACIFIC BEACH RETAILERS

1	The Baked Bear and Board & Brew	21	Union Bank	41	Woodstock Pizza
2	Denny's	22	Jamba Juice	42	PB Sushi and Crunch Fitness
3	Backyard Kitchen & Tap	23	PETCO	43	Moonshine Beach & Cerveza Jack
4	Bank of America	24	CVS Pharmacy	44	McDonald's
5	Chase Bank	25	Comerica Bank	45	Buffalo Exchange
6	Five Guys & Fries	26	Juice Kaboose	46	Primitive Smoke BBQ
7	Cabo Cantina	27	Bruegger's Bagels	47	PB Pho Grill
8	Flame Broiler	28	The Broken Yolk Café	48	Little Farmer's Cafe
9	Better Buzz Coffee	29	The Silver Fox Lounge	49	Crushed
10	Tavern at the Beach	30	Pacific Beach Fish Shop	50	Johnny V
11	Wells Fargo Bank	31	Fantastic Sam's	51	24HR Fitness
12	Poké Shop	32	Empire Beauty Supply	52	Breakfast Republic (Coming Soon) replacing Miller's Field
13	Hammond's Gourmet Ice Cream	33	Barre Body Workout	53	CVS Pharmacy
14	PB Cantina	34	Mister Sushi	54	Taco Bell
15	Chipotle Mexican Grill	35	Ichiban PB	55	IHOP
16	Iron Pig Alehouse	36	World Curry Restaurant	56	Rubio's Mexican Restaurant
17	Core Power Yoga & Papa John's Pizza	37	Vallarta Express	57	PB Alehouse
18	Staples	38	Reach Yoga	58	Wings Empire
19	Petsmart	39	7Eleven	59	Wendy's Hamburgers
20	Rite Aid	40	Barrel Republic and SD Tap Room	60	KFC

This information is deemed reliable, but not guaranteed. All information should be independently verified for its accuracy and completeness before relying upon it.



epsteen & associates
www.epsteen.com

Contact Information

Gene Mello
gmello@epsteensd.com
Lic #01909763

Joe Wojdowski
jwojdowski@epsteensd.com
Lic #01237995

DEMOGRAPHICS

1245 Garnet Ave, San Diego, CA 92109



POPULATION	1 Mile	2 Miles	3 Miles	5 Miles
2018 Estimated Population	32,967	55,927	88,088	277,263
2023 Projected Population	34,354	58,292	91,697	287,263
2010 Census Population	30,966	52,645	83,044	260,054
2000 Census Population	30,425	52,340	82,930	256,211
Projected Annual Growth 2018 to 2023	0.8%	0.8%	0.8%	0.8%
Historical Annual Growth 2000 to 2018	31.9%	35.9%	0.3%	0.5%
2018 Median Age	31.9	35.9	37.8	37.6
HOUSEHOLDS	1 Mile	2 Miles	3 Miles	5 Miles
2018 Estimated Households	17,315	27,348	41,175	118,665
2023 Projected Households	18,119	28,670	43,162	124,293
2010 Census Households	16,482	26,073	39,341	112,629
2000 Census Households	16,566	26,455	40,200	113,288
Projected Annual Growth 2018 to 2023	0.9%	1.0%	1.0%	0.9%
Historical Annual Growth 2000 to 2018	0.3%	0.2%	0.1%	0.3%
RACE AND ETHNICITY	1 Mile	2 Miles	3 Miles	5 Miles
2018 Estimated White	84.4%	83.5%	82.3%	72.8%
2018 Estimated Black or African American	1.6%	1.7%	1.7%	3.2%
2018 Estimated Asian & Pacific Islander	5.1%	5.7%	6.1%	11.9%
2018 Estimated American Indian & Native Alaskan	0.4%	0.4%	0.4%	0.5%
2018 Estimated Other Races	8.5%	8.7%	9.4%	11.6%
2018 Estimated Hispanic	13.6%	14.0%	15.2%	18.2%
INCOME	1 Mile	2 Miles	3 Miles	5 Miles
2018 Estimated Average Household Income	\$99,274	\$120,917	\$122,343	\$112,767
2018 Estimated Median Household Income	\$78,625	\$91,498	\$94,239	\$86,850
2018 Estimated Per Capita Income	\$52,221	\$59,282	\$57,346	\$48,785
EDUCATION (AGE 25+)	1 Mile	2 Miles	3 Miles	5 Miles
2018 Estimated Elementary (Grade Level 0 to 8)	1.3%	1.4%	1.6%	3.2%
2018 Estimated Some High School (Grade Level 9 to 11)	1.6%	1.6%	2.1%	3.1%
2018 Estimated High School Graduate	8.7%	9.5%	10.9%	13.2%
2018 Estimated Some College	17.5%	16.9%	17.9%	19.9%
2018 Estimated Associates Degree Only	6.3%	5.8%	6.1%	6.4%
2018 Estimated Bachelors Degree Only	45.5%	43.4%	39.7%	32.2%
2018 Estimated Graduate Degree	19.1%	21.4%	21.6%	22.0%
BUSINESS	1 Mile	2 Miles	3 Miles	5 Miles
2018 Estimated Total Businesses	1,739	2,659	4,437	13,967
2018 Estimated Total Employees	10,028	23,040	36,770	130,749
2018 Estimated Employee Population per Business	5.8	8.7	8.3	9.5
2018 Estimated Residential Population per Business	19.0	21.0	19.8	20.2