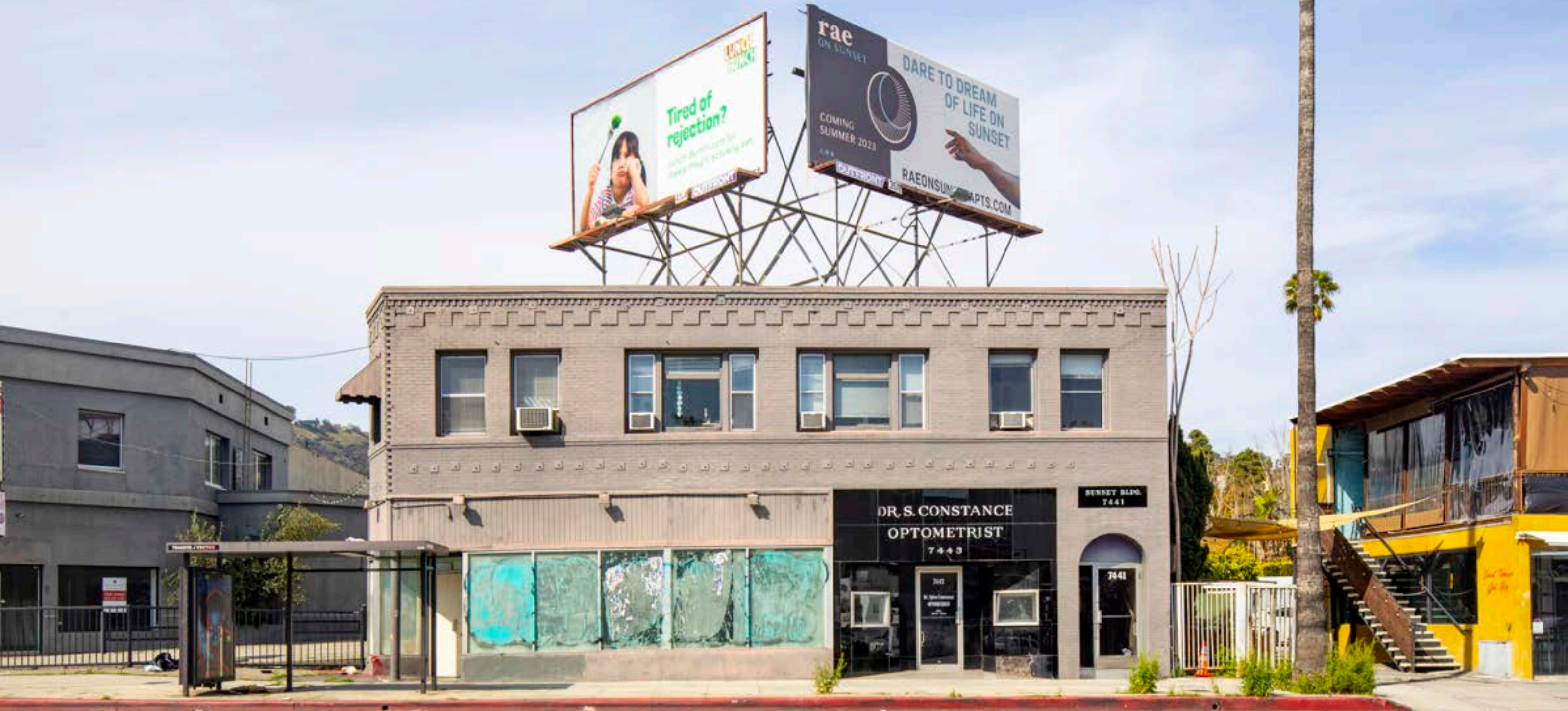


SUNSET CROSSING



7445 W SUNSET
BLVD — FOR LEASE

 SOUTH PARK GROUP

FOR LEASE

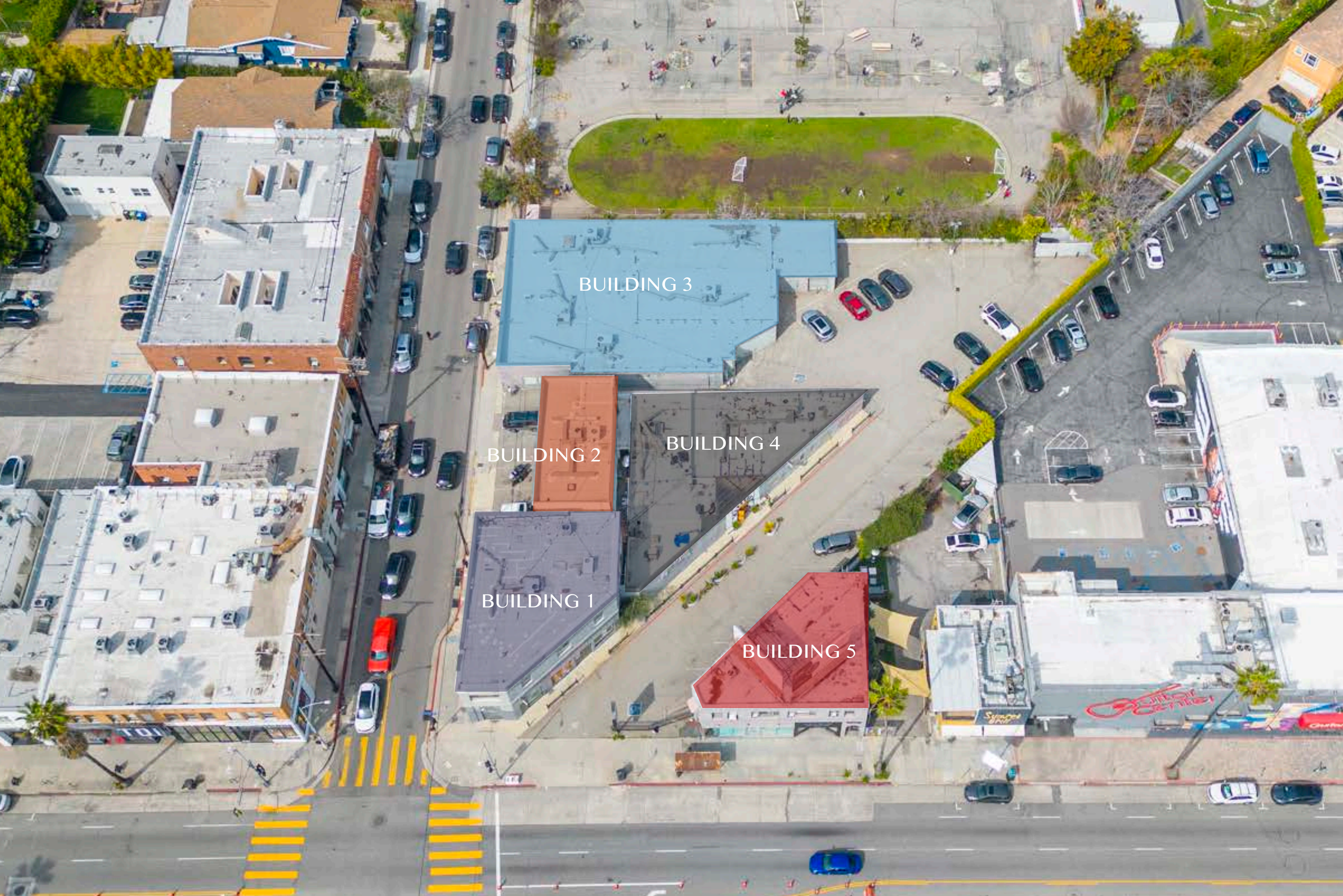
Short term office + retail in the heart of Hollywood

Located in one of the most
walkable neighborhoods in Hollywood



PROPERTY OVERVIEW

BUILDING	ADDRESS	USE	SIZE
BUILDING 1	7445 W Sunset Blvd	Retail / Office	± 848 - 1,927 RSF
BUILDING 2	1502 Gardner St	Office / Showroom	± 801 - 1,968 RSF
BUILDING 3	1512-1516 Gardner St	Retail / Theater / Office	± 1,335 - 5,188 RSF
BUILDING 4	Fully Leased	Fully Leased	Fully Leased
BUILDING 5	7441 W Sunset Blvd	Retail / Office	± 2,283 RSF



BUILDING 3

BUILDING 2

BUILDING 4

BUILDING 1

BUILDING 5

BUILDING 1



BUILDING 1

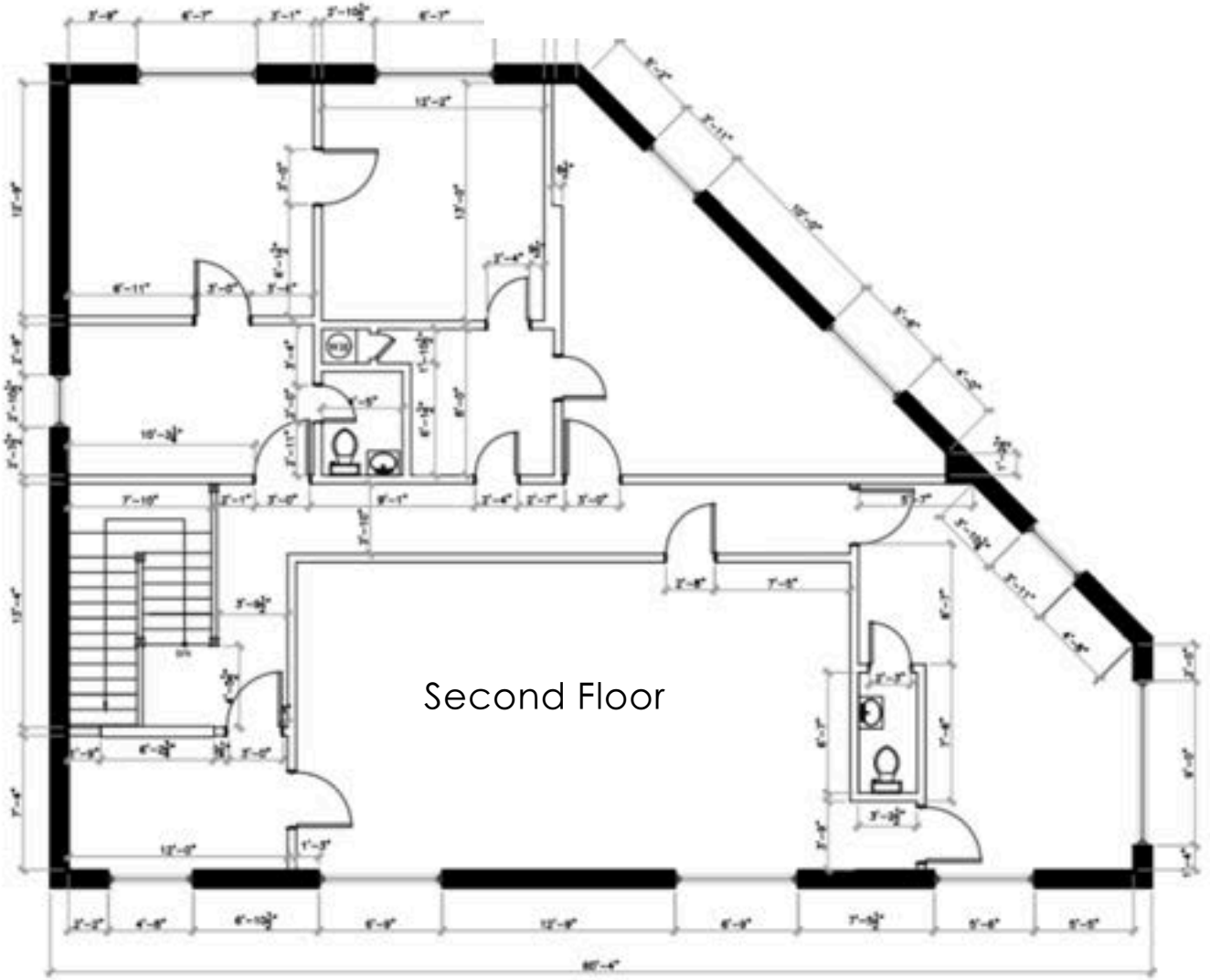
7445 W SUNSET BLVD

Ground Floor AVAILABLE

Approximately 848 square feet located on the corner of Sunset Blvd and Gardner St.

Second Floor AVAILABLE

Approximately 1,927 square feet located on the corner of Sunset Blvd and Gardner St.



BUILDING 2

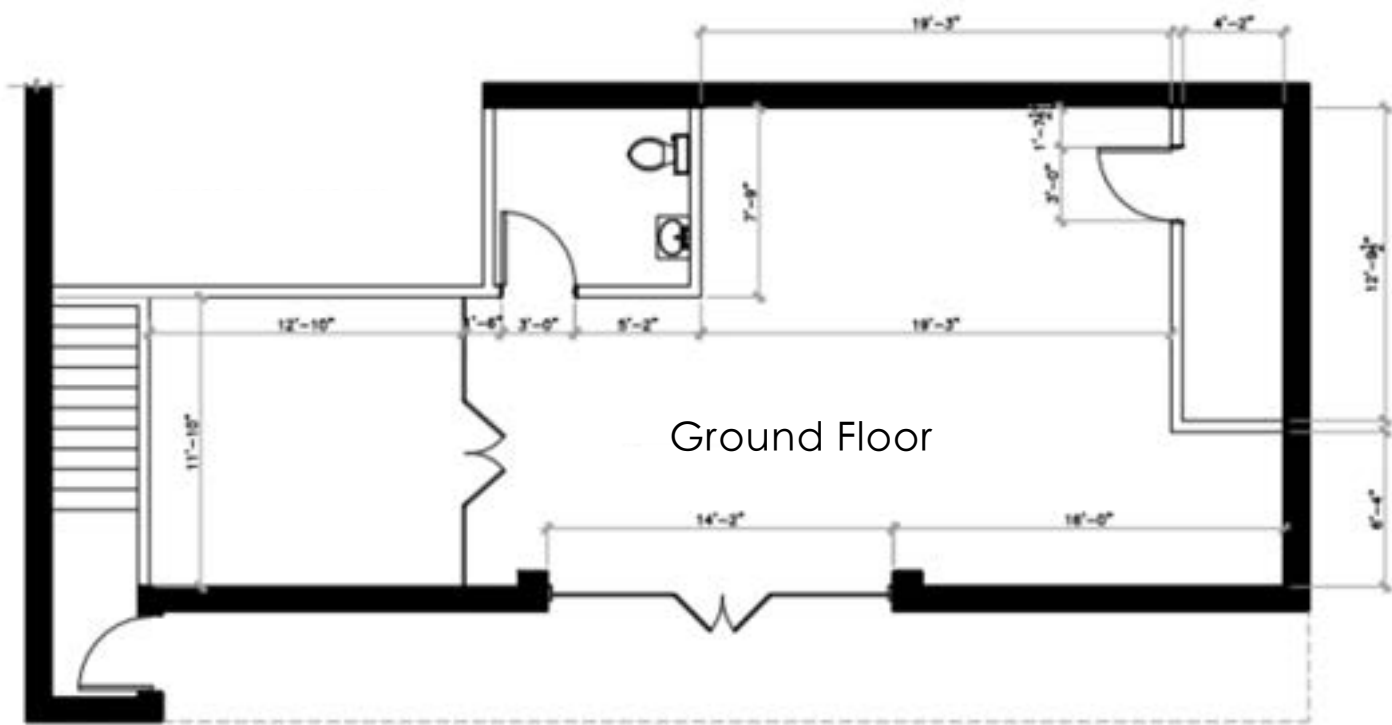


BUILDING 2

1502 GARDNER ST

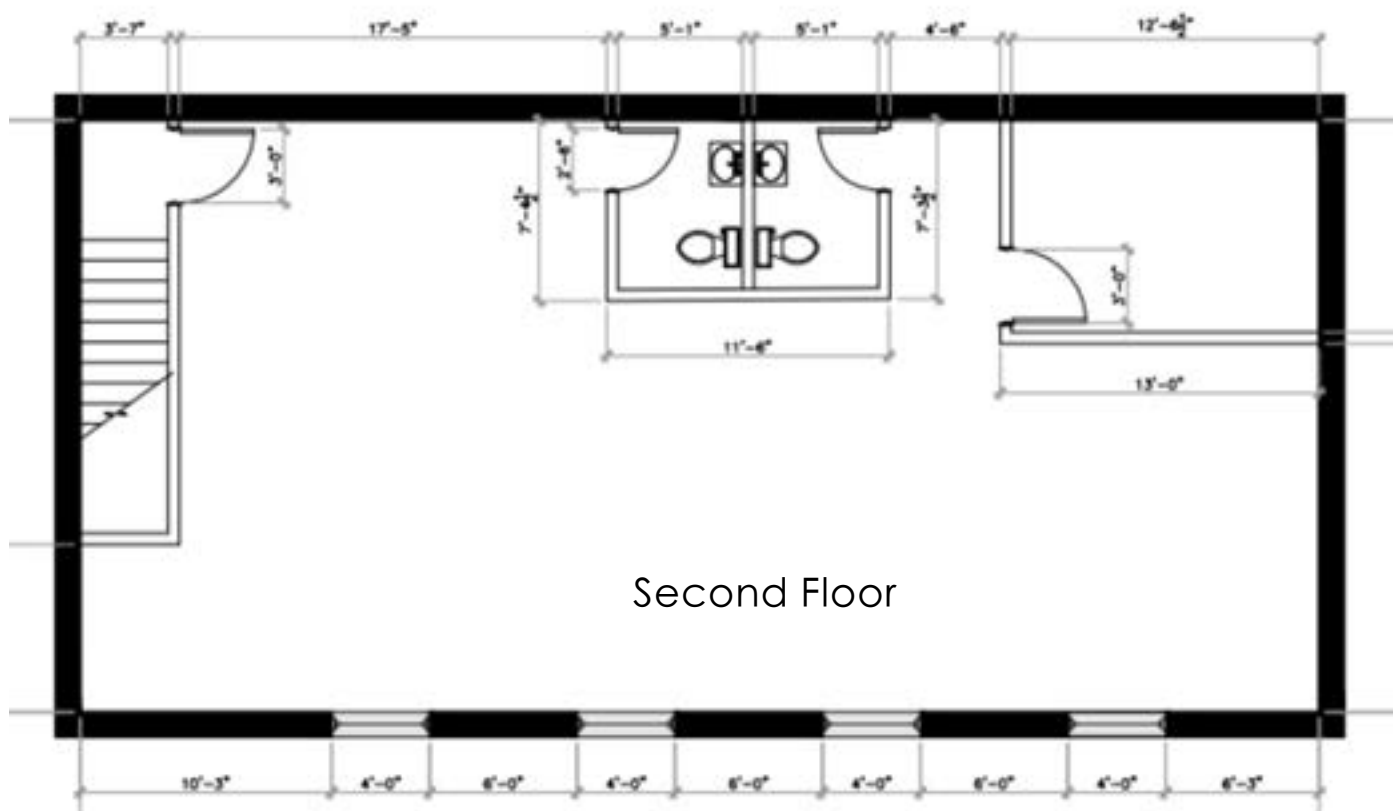
Ground Floor

Approximately 801 square feet located on Gardner St.



Second Floor

Approximately 1,167 square feet located on Gardner St.



BUILDING 3



BUILDING 3

1512-1516 GARDNER ST

1512 Gardner St AVAILABLE

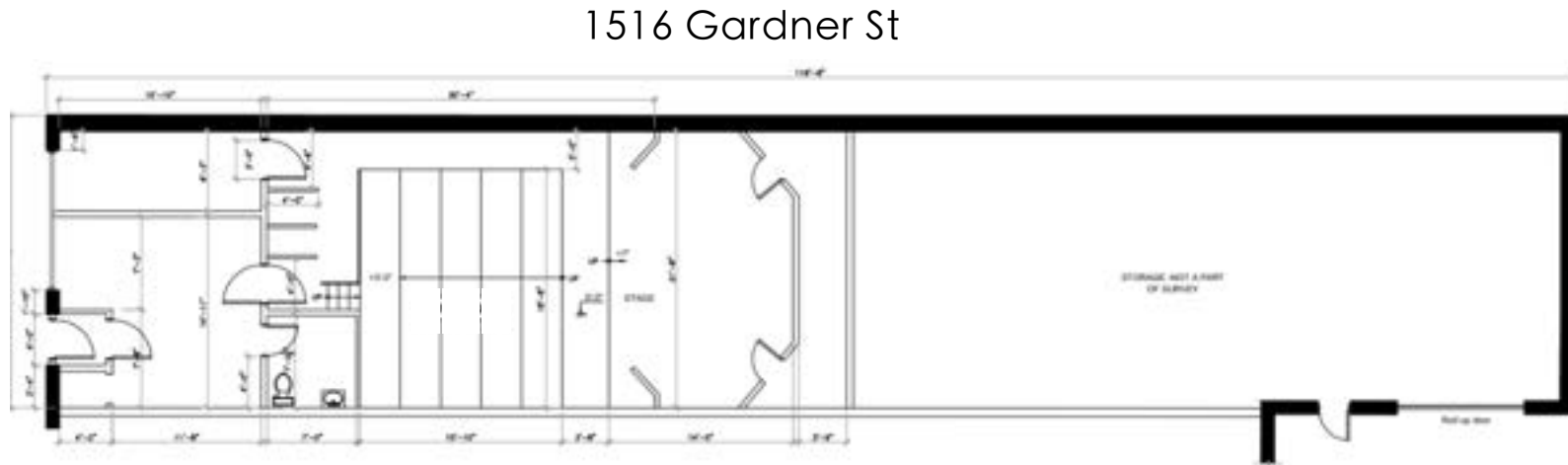
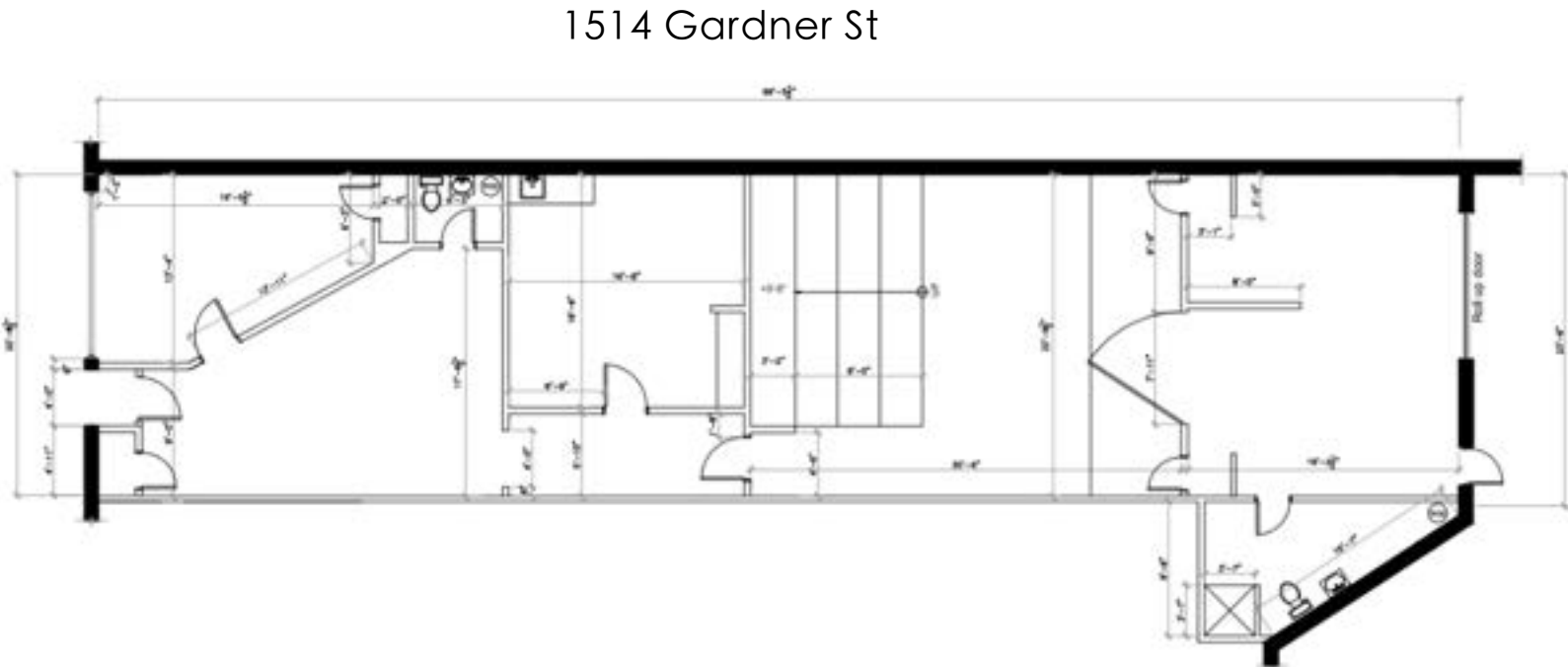
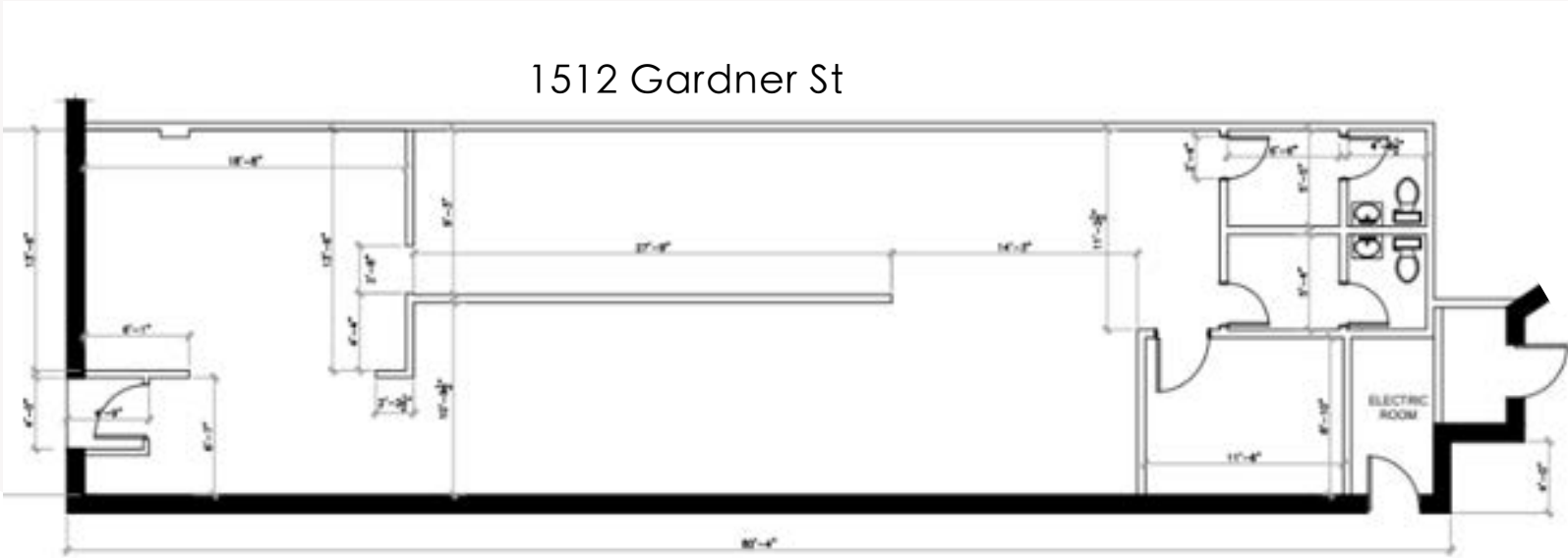
Approximately 1,535 square feet located on Gardner St.

1514 Gardner St AVAILABLE

Approximately 2,318 square feet located on Gardner St.

1516 Gardner St AVAILABLE

Approximately 1,335 square feet located on Gardner St.



BUILDING 5



BUILDING 5

7441 W SUNSET BLVD

Unit A (Ground Floor) LEASED

Approximately 667 square feet located on Sunset Blvd.

Unit B (Ground Floor) AVAILABLE

Approximately 845 square feet located on Sunset Blvd.

Unit C (Second Floor) AVAILABLE

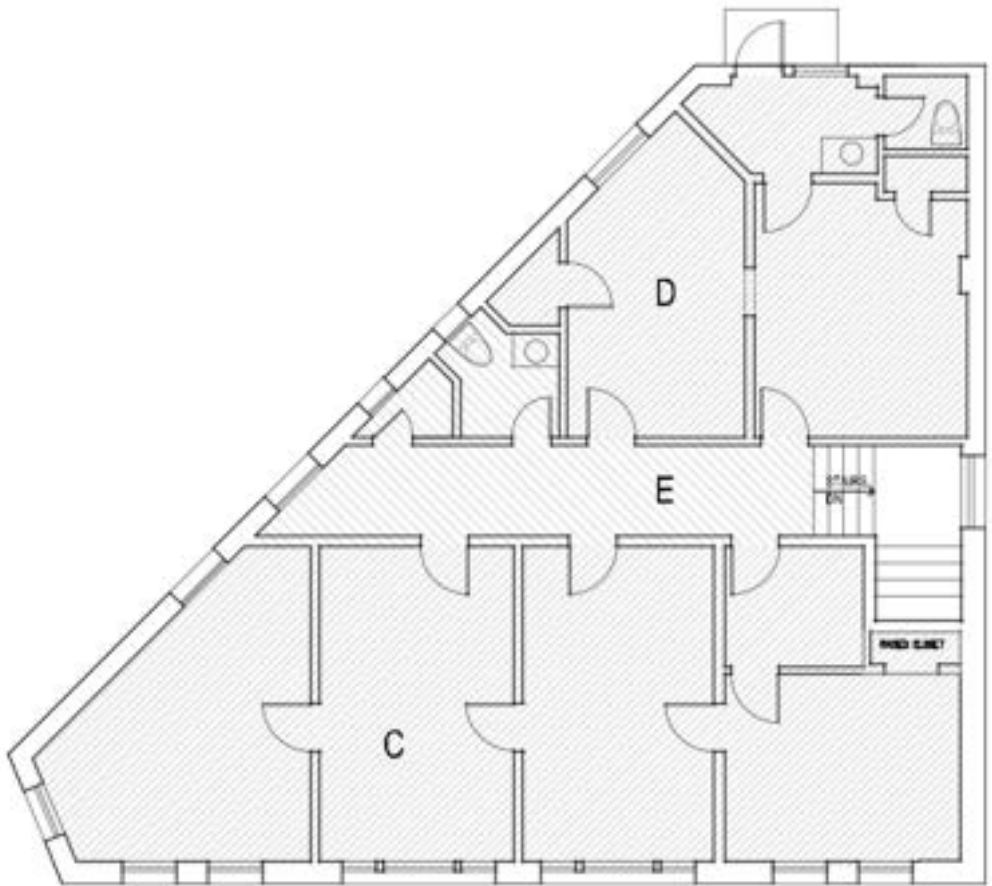
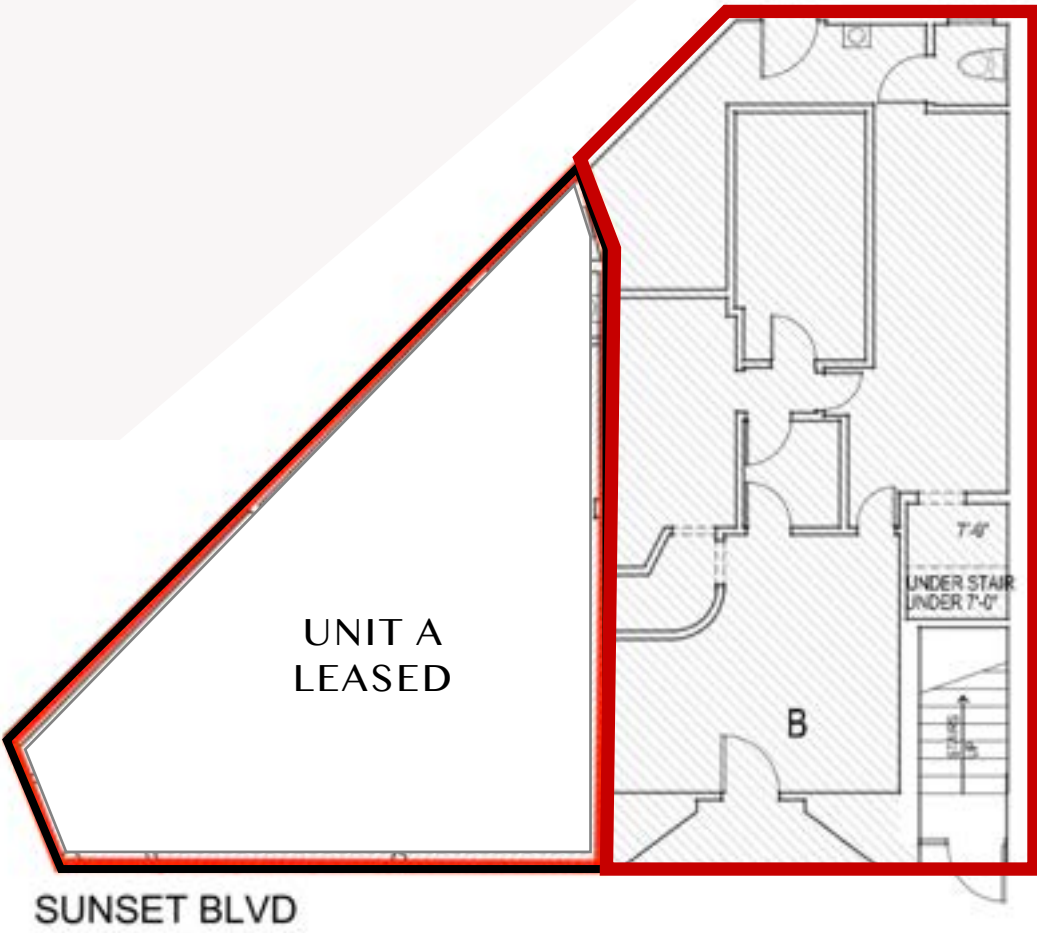
Approximately 787 square feet located on Sunset Blvd.

Unit D (Second Floor) AVAILABLE

Approximately 426 square feet located on Sunset Blvd.

Unit E (Second Floor) AVAILABLE

Approximately 225 square feet located on Sunset Blvd.



HOLLYWOOD

JOIN THE NEIGHBORHOOD

The property is in close proximity to trendy tenants including Horses, Electric Owl, John Kelly Chocolates, Lifehouse Tonics + Elixirs, Blackwood Coffee and more



— In the area



SUNSET BLVD

GARDNER ST

7445 W SUNSET BLVD



CONTACT

STEVE RAVAN

Senior Vice President

T. 323.782.1262

E. steveravan@southparkgroup.com

Lic. 01747222

SAM MINASIAN

Executive Vice President

T. 323.782.1261

E. samminasian@southparkgroup.com

Lic. 01212823

MANE AJARYAN

Associate

T. 818.523.4997

E. mane@southparkgroup.com

Lic. 02099173