

# Office Space For Lease

SUITE 201 | 9,250 SF DEMISABLE TO 3,900 SF | AVAILABLE NOW  
801 S FIDALGO ST, SEATTLE, WA 98108



## Building Highlights

40 FREE PARKING STALLS

Easily accessible to all the major freeways with on/off ramps to I-5 and Hwy 99 less than 0.6 miles away.

Located in Seattle's Georgetown neighborhood, known for its artistic and industrial vibe.

Many trendy nearby restaurants and cafes for employees

Less than 10 minutes drive to downtown Seattle

15 minutes to Seattle-Tacoma International Airport



FOR MORE INFORMATION  
**CONTACT**

CHASE SILVER  
425.326.0766  
csilver@orioncp.com

MATTHEW HINRICHS  
206.852.3325  
mhinrichs@orioncp.com

1218 Third Ave  
Suite 2200  
Seattle, WA 98101

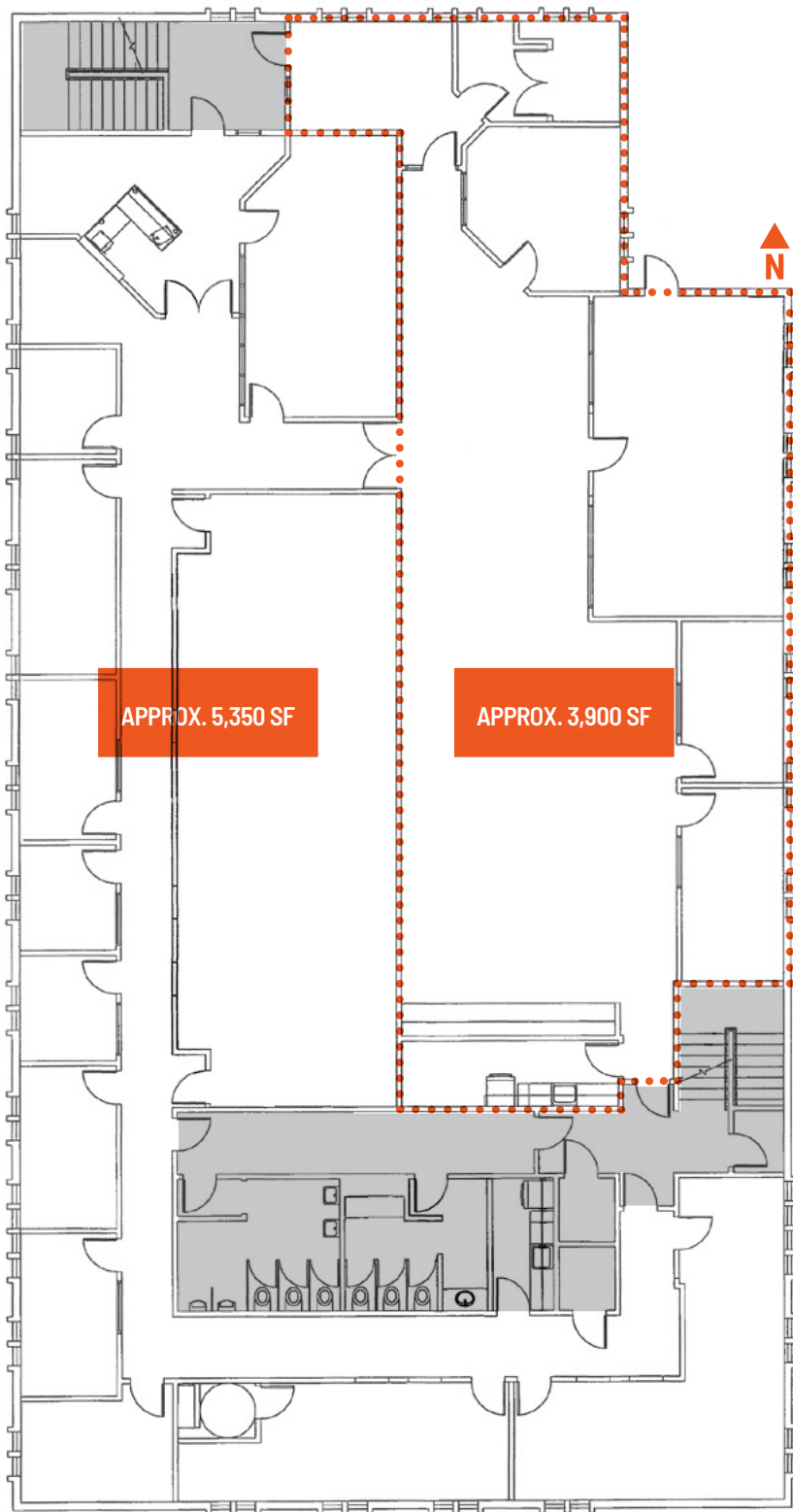
[www.orioncp.com](http://www.orioncp.com)

**ORION**  
COMMERCIAL PARTNERS

# Office Space For Lease

SUITE 201 | 9,250 SF DEMISABLE TO 3,900 SF | AVAILABLE NOW

801 S FIDALGO ST, SEATTLE, WA 98108



## Space Highlights



**AVAILABLE SPACE:**  
**9,250 SF DEMISABLE TO 3,900 SF**

**A MIX OF OFFICE & OPEN CONCEPT**

**HIGH CEILINGS**

**24/7 ACCESS**

**CALL BROKER FOR RATES**

The information contained herein was obtained from sources believed reliable; however, ORION Commercial Partners LLC makes no guarantees, warranties or representations as to the completeness or accuracy thereof. The presentation of this property is submitted subject to errors, omissions, change of price or conditions prior to sale or lease, or withdrawal without notice.

**FOR MORE INFORMATION  
CONTACT**

**CHASE SILVER**  
425.326.0766  
csilver@orioncp.com

**MATTHEW HINRICHS**  
206.852.3325  
mhinrichs@orioncp.com

1218 Third Ave  
Suite 2200  
Seattle, WA 98101

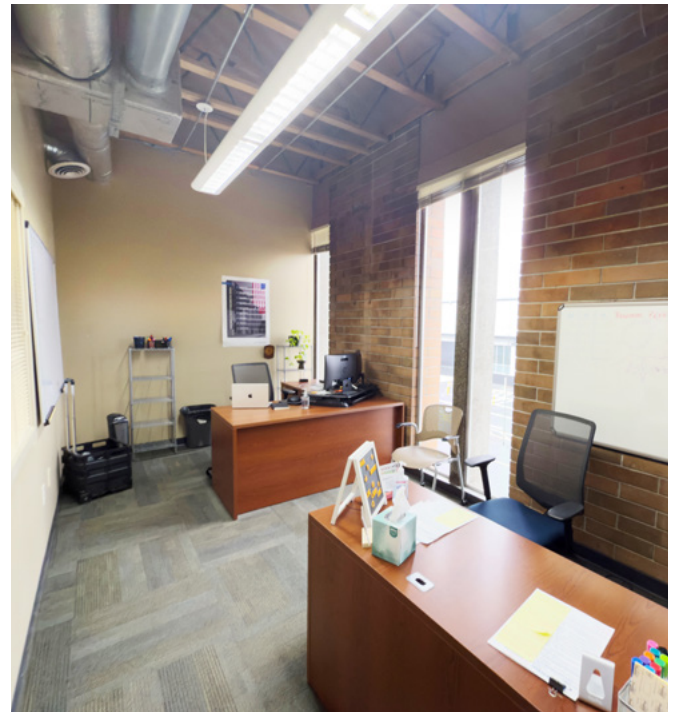
[www.orioncp.com](http://www.orioncp.com)

**ORION**  
COMMERCIAL PARTNERS



# Office Space For Lease

SUITE 201 | 9,250 SF DEMISABLE TO 3,900 SF | AVAILABLE NOW  
801 S FIDALGO ST, SEATTLE, WA 98108



FOR MORE INFORMATION  
**CONTACT**

CHASE SILVER  
425.326.0766  
csilver@orioncp.com

MATTHEW HINRICHS  
206.852.3325  
mhinrichs@orioncp.com

1218 Third Ave  
Suite 2200  
Seattle, WA 98101

[www.orioncp.com](http://www.orioncp.com)

**ORION**  
COMMERCIAL PARTNERS

SUITE 201 | 9,250 SF DEMISABLE TO 3,900 SF | AVAILABLE NOW  
801 S FIDALGO ST, SEATTLE, WA 98108

801 S FIDALGO ST, SEATTLE, WA 98108



- ## 10 Great Notion Brewing

- ## 21 The Flora Bakehouse

- 32 Westerly



ORION  
COMMERCIAL PARTNERS