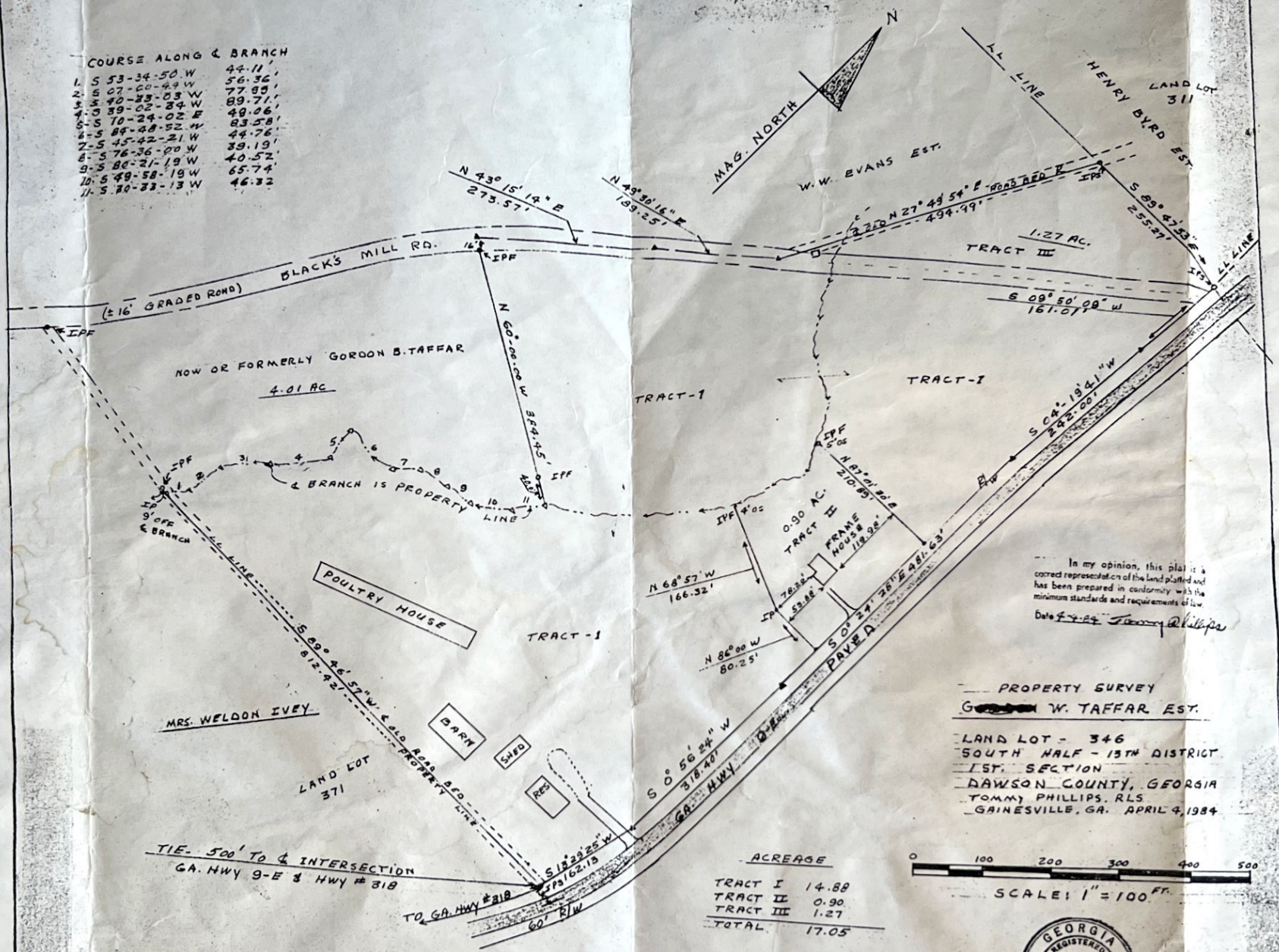


COURSE ALONG & BRANCH

1. S 53-34-50 W	44.11'
2. S 07-00-03 W	56.36'
3. S 40-23-03 W	77.89'
4. S 39-02-34 W	89.71'
5. S 70-24-02 E	49.06'
6. S 89-48-52 W	83.58'
7. S 45-42-21 W	44.76'
8. S 76-36-00 W	39.19'
9. S 80-21-19 W	40.52'
10. S 49-58-19 W	65.74'
11. S 30-22-13 W	46.32'

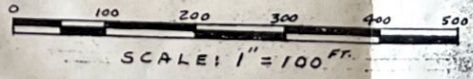


In my opinion, this plan is a correct representation of the land plotted and has been prepared in conformity with the minimum standards and requirements of law.  
 Date 4-4-84 Tommy I. Phillips

PROPERTY SURVEY  
 GORDON W. TAFFAR EST.  
 LAND LOT - 346  
 SOUTH HALF - 13TH DISTRICT  
 1ST. SECTION  
 DAWSON COUNTY, GEORGIA  
 TOMMY PHILLIPS, RLS  
 GAINESVILLE, GA. APRIL 4, 1984

ACREAGE

TRACT I	14.88
TRACT II	0.90
TRACT III	1.27
TOTAL	17.05



CLOSURE  
 FIELD SURVEY: 1" IN 23205'  
 PLAT: 1" IN 102800'  
 SURVEYED WITH:  
 PENTAX PX-10D 10"  
 EDM THEODOLITE



GEORGIA, DAWSON COUNTY  
 CLERK'S OFFICE, SUPERIOR COURT  
 FILED FOR RECORD  
 of 3145 P. 4-23-84  
 Recorded in Book 11 Page 237  
 this 23 day of April 1984  
 Ralph Maddox  
 RALPH MADDOX, CLERK

CLYDE CASTLEBERRY CO., COVINGTON, GA. 30209