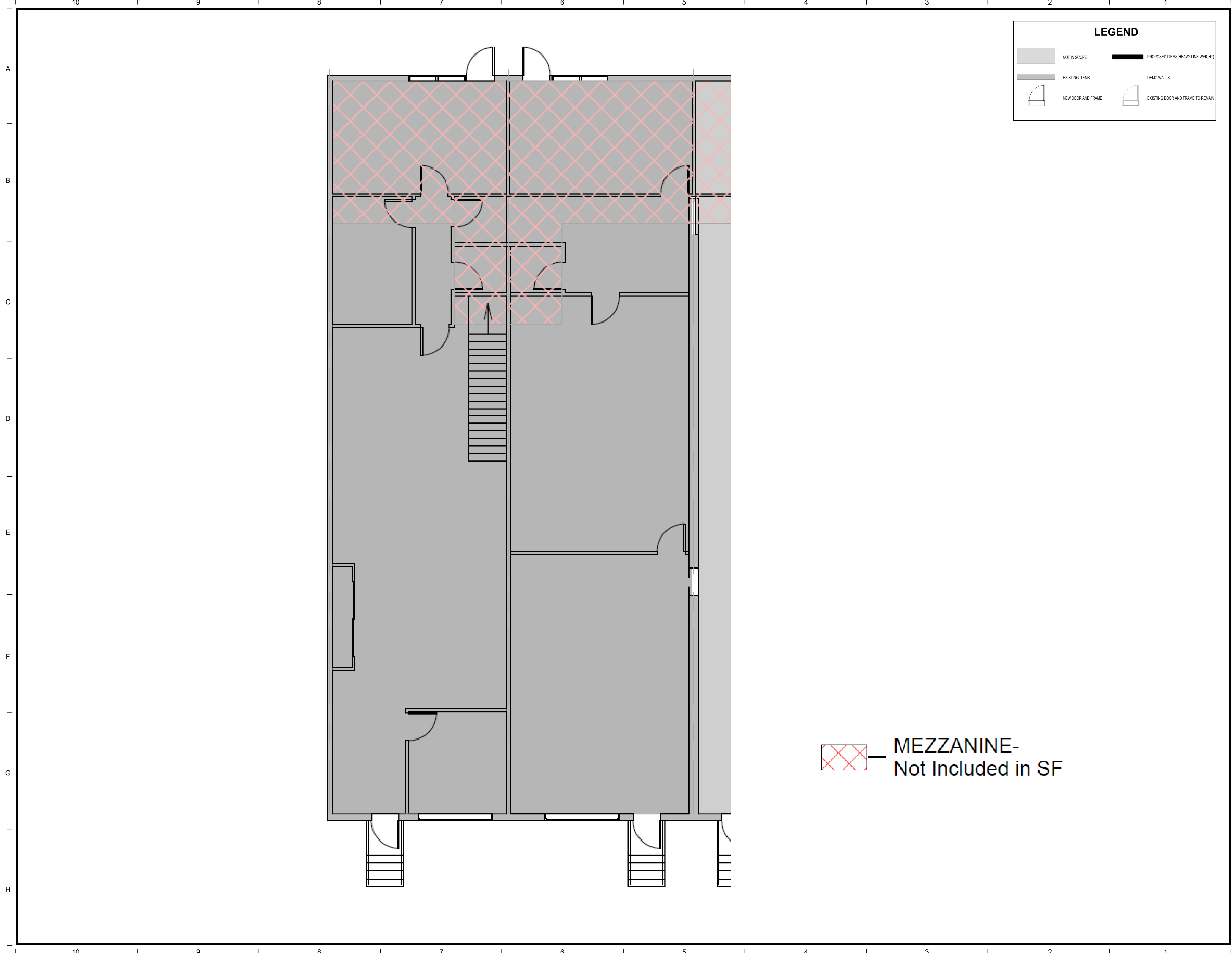


9/15/2023 9:14:16 AM



**LEGEND**

|  |                    |  |                                    |
|--|--------------------|--|------------------------------------|
|  | NOT IN SCOPE       |  | PROPOSED ITEMS (HEAVY LINE WEIGHT) |
|  | EXISTING ITEMS     |  | DEMO WALLS                         |
|  | NEW DOOR AND FRAME |  | EXISTING DOOR AND FRAME TO REMAIN  |



Brady Sullivan Properties  
 670 N. Commercial Street  
 Manchester, nh 03101  
 603.622.6223



Owner  
**BRADY SULLIVAN PROPERTIES**

Project  
**FALTIN DRIVE**  
 75 FALTIN DRIVE  
 MANCHESTER, NH

**85 FALTIN DRIVE  
 SUITE 101-102  
 2,957 SF**

Seals

Issues

| Date | Description |
|------|-------------|
|      |             |
|      |             |
|      |             |
|      |             |

Revisions

| No. | Date | Description |
|-----|------|-------------|
|     |      |             |
|     |      |             |
|     |      |             |
|     |      |             |

Drawing Title

|                            |                     |
|----------------------------|---------------------|
| Issue Date:                | 09-15-2023          |
| Project No: Project Number | Scale: As Indicated |
| Project Manager:           | Production Leader:  |
| Project Architect:         | Peer Reviewer:      |

Drawing Number  
**A101**

MEZZANINE-  
 Not Included in SF