

For Sale

*Elevate Your Workday in a
Setting You'll Love!*

**Office Building
Totaling 17,108± SF**



**ONEIL
COMMERCIAL
ADVISORS**

STRATEGIC REAL ESTATE SOLUTIONS

Contact

Cheri O'Neil
Principal
813-787-5669
Coneil@ocateam.com



4620 Woodland
Corporate Blvd
Tampa FL 33614

Versatile Office Space in a
Park-Like Setting with
Exceptional Amenities



Property Information

List Price: \$4,275,000

- **Location and Access:** 4620 Woodland Corporate Blvd, Tampa, within Woodland Corporate Center. Easily accessible from the south side of Woodland Corporate Blvd and the west side of Woodland Center Blvd. near the main entrance to the business park.
- **Total Land Area** (acres): 2.97
- **No of Buildings:** 1
- **Year Built:** 1995
- **Construction:** Concrete Block - Brick
- **Roof:** Rigid Frame/Barjoist
- **No of Floors:** 1
- **Building SF:** 17,108 Approx.
- **Parking:** 132 uncovered and 5 covered surface for a ratio of 7.90/1,000 SF
- **Zoning:** PD-RP Planned Development with Rural Preservation Characteristics
- **Flood Zone:** X, an area with minimal flood risk



4620 Woodland Blvd
Tampa, FL

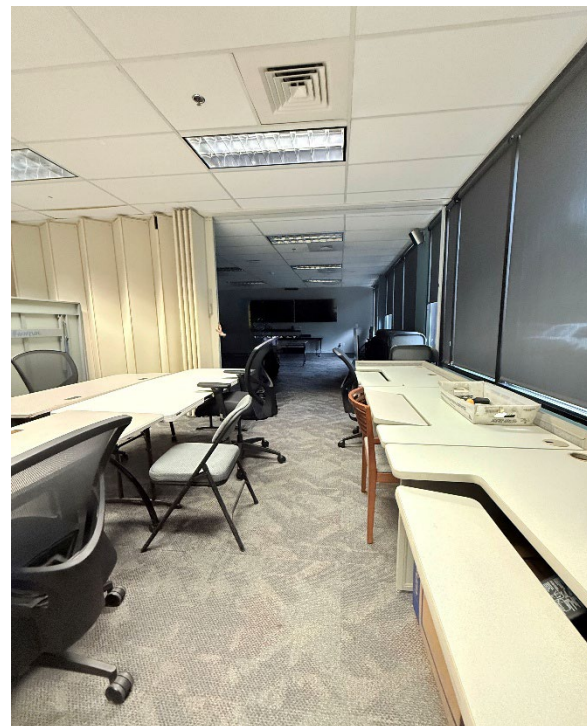


Space Highlights

- Refined, Welcoming Reception Area:
Sets a professional tone and makes a lasting first impression.



- Versatile Conference Rooms – Includes a glass-enclosed conference room offering serene views of the wooded backdrop, a flexible meeting space with partitioned walls for adaptable use, and a third conference space lined with windows offering views of mature trees and abundant natural light.



Space Highlights

- Private & Semi-Private Offices – Features a mix of fully enclosed and glass-partitioned offices that balance privacy with openness.
- Ample Open Workspace with Garden Views – Open area surrounded by windows that overlook the property's natural vegetation offering abundant natural light and calming, nature-inspired environment.

- Garden Views Throughout: Most of the offices / workspace features windows that overlook the garden and greenery, creating a bright and inviting work environment.





- Cat6 wiring
- 24-hour access
- Parking ratio of 7.9/1,000 SF



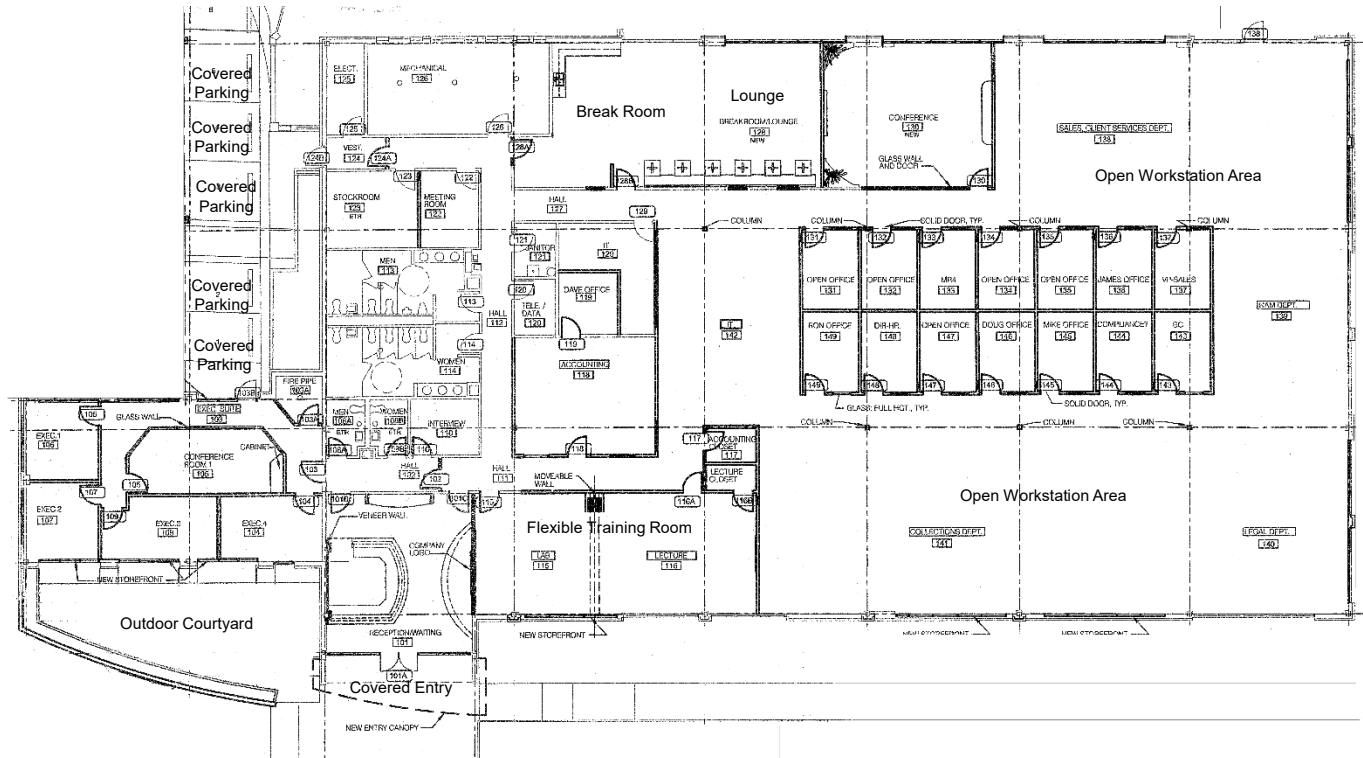
Owner/Tenant Experience

- Occupiers at this property enjoy a thoughtful balance of comfort, convenience, and nature. The building features a serene outdoor area complete with decorative bowl-style water fountains, comfortable seating, and relaxing ambience perfect for casual meetings or mid-day breaks.
- Abundant parking ensures ease of access for both staff and visitors, while the surrounding trees and greenery provide a peaceful, park-like atmosphere that enhances the everyday work environment.



Demising Plan

17,108 SF



Floorplan

4620 Woodland Corporate Blvd
Tampa FL 33614

Demographics

Ring of 0-1 mile



4,371
Households

11,879
Population



Median Age

\$49,108
Median Disposable
Income



\$58,025
Median Household
Income



\$28,379
Per Capita
Income



\$66,643
Median Net
Worth

Ring of 1-3 miles



36,880
Households

92,962
Population



Median Age

\$56,835
Median Disposable
Income



\$68,296
Median Household
Income



\$36,793
Per Capita
Income



\$124,900
Median Net
Worth

Ring of 3-5 miles



79,828
Households

192,335
Population



Median Age

\$61,293
Median Disposable
Income



\$73,928
Median Household
Income



\$43,151
Per Capita
Income



\$155,328
Median Net
Worth

Location

As one of Northwest Tampa's premier professional parks, Woodland Corporate Center combines expansive space with a tranquil, park-like environment. This prime location provides excellent connectivity to major thoroughfares, including I-275, the Veterans Expressway and Dale Mabry Hwy, enhancing access across Tampa Bay. Positioned at a signalized intersection for convenient access, this office park offers unmatched commuter ease. Employees benefit from a HART bus stop located on Waters Avenue, making public transit accessible for daily commuters.



For Sale

For more information or to
request a tour, contact:

Cheri M. O'Neil
Principal
C: (813) 787-5669
COneil@OCAteam.com



**ONEIL
COMMERCIAL
ADVISORS**

STRATEGIC REAL ESTATE SOLUTIONS



4620 Woodland
Corporate Blvd
Tampa FL 33614

All information contained herein has been obtained from the owners and/or other sources deemed reliable, but we make no representations or warranties, expressed or implied, as to its accuracy. Information is submitted with the possibility of errors, omissions, change of price, rate, conditions or withdrawal without notice. References to measurements are approximate. All parties to a real estate transaction should seek legal and tax advice prior to commitment. Buyer/Tenant must verify the information and bears all risk for any inaccuracies.