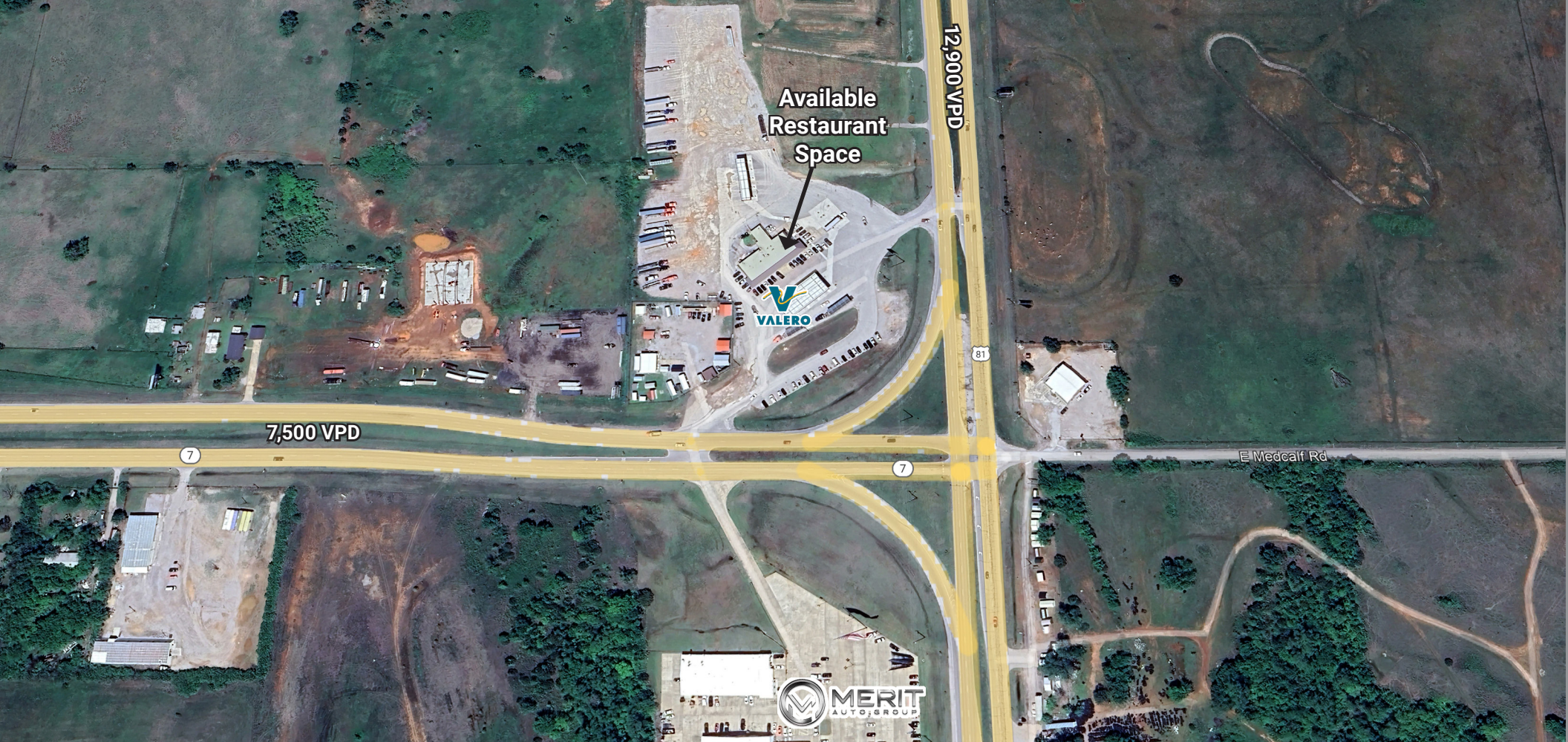


AVAILABLE
Restaurant Space



FORMER CAFE | FOR LEASE
1001 W HWY 7, MARLOW, OK

THE
RETAIL
GROUP



PROPERTY DETAILS

Building Size	7,494 SF
Available SF	3,000 SF
Lease Rate	\$15/SF Gross

PROPERTY HIGHLIGHTS

Prime location at the intersection of US-81 and State Highway 7

Marlow is in Stephens County, located in the southern part of Oklahoma

Marlow's economy is primarily based on agriculture, oil, and gas industries. It also has a variety of local businesses and services

Marlow hosts various events throughout the year, including the annual Marlow Outlaw Days, which celebrates the city's heritage

SNAPSHOT



Estimated Vehicles/Day
State Hwy 81
12,900 VPD



Avg. HH Income
3 mi Radius
\$105,941



Population
5 mi Radius
13,354

**THE
RETAIL
GROUP**

JAY COHLMIA
jaycohlmia@newmarkrp.com
O: 405.602.2989

MICHAEL RAPELLA
mrappella@newmarkrp.com

SHAUN CORSO
scorso@newmarkrp.com

204 N. Robinson, Ste 700 OKC, OK, 73102 | for more information, visit us at
110 W. 7th, Ste 2600 Tulsa, OK, 74119 | **NEWMARKRP.COM**

The information contained herein was obtained from sources believed reliable; however, Newmark Robinson Park makes no guarantees, warranties or representations as to the completeness or accuracy thereof. The presentation of this property is submitted subject to errors, omissions, change of price or conditions prior to sale or lease, or withdrawal without notice. Independently Owned and Operated.