



For sale

Existing Lab Space
4,905 SF

Call for Pricing



2528 Qume Drive, Unit 6, San Jose

Property Highlights

- Existing Lab Infrastructure
- 3 Fume Hoods
- Class 100,000 Rated Lab Area and a Class 10,000 Clean Room
- Power: 600 Amp, Three Phase Power
- Build-Out – Four Labs, Two Private Offices, One Conference Room, Kitchen and Restrooms
- Grade Level Loading
- 10' Ceiling Height

JOEL YUNGEN

+1 650 480 2115

joel.yungen@jll.com

License #: 01850588

CONOR FLANNERY

+1 650 480 2207

conor.flannery@jll.com

License #: 01434412

JOE LONG

+1 650 480 2142

joe.long@jll.com

License #: 02106412

jll.com

Jones Lang LaSalle Brokerage, Inc. License #: 01856260

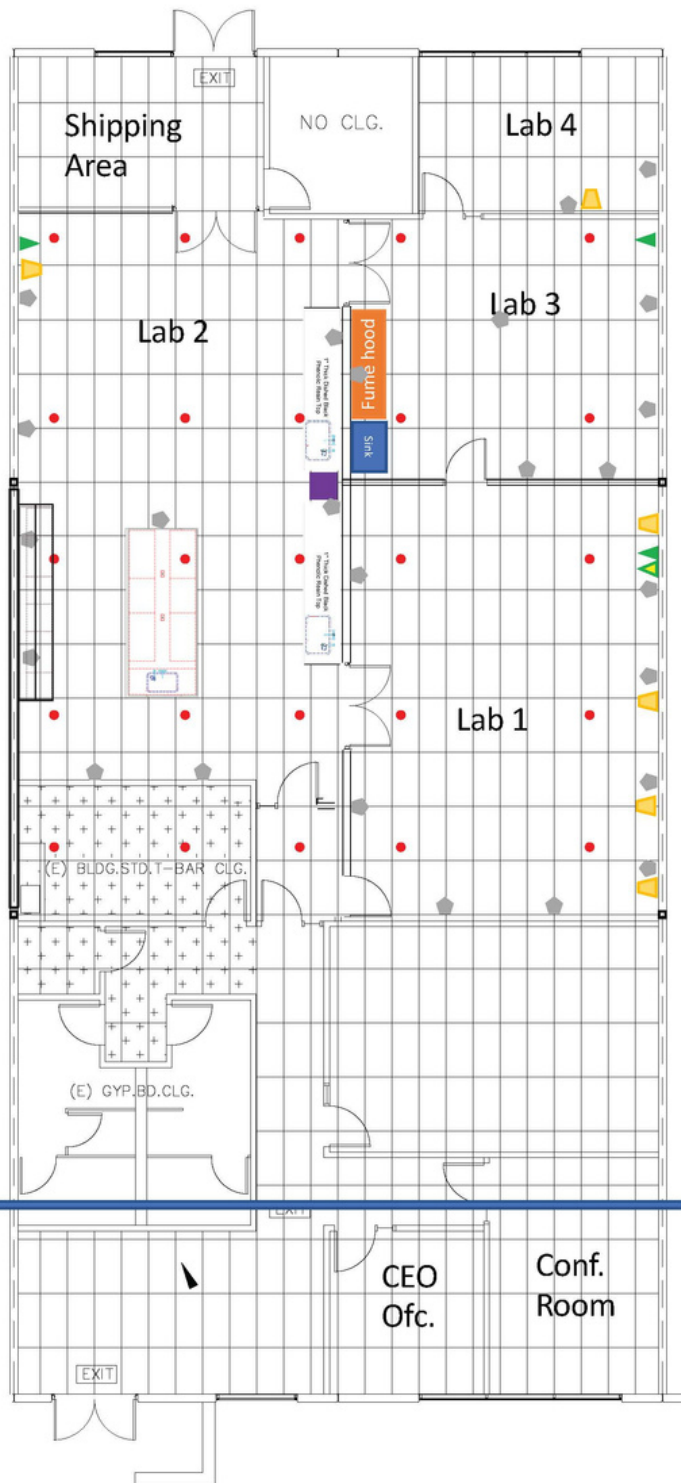
2528 Qume Drive

Existing Lab Space

4,905 SF

Existing Lab Improvements

- Clean Air Ventilation System
- Labs are Rated at Class 100,000 Clean Room (100%)
- Class 10,00 Clean Room Infrastructure
- Clean Room Grade Ceiling Tiles
- Three Fume Hoods
- Two Lab Tables/Cabinets
- Dionized Water Infrastructure
- Vacuum Compressors (Optional)
- Hazardous Materials Certified (3 Blue/3 Red/1 Yellow)



LEGEND

- Water Distiller
- Eyewash Station
- Clean/Dry Air
- 110V, 15 amps
- 220V, 30 amps
- Fire Sprinkler
- Vacuum Line
- Main Sewer Drain Location

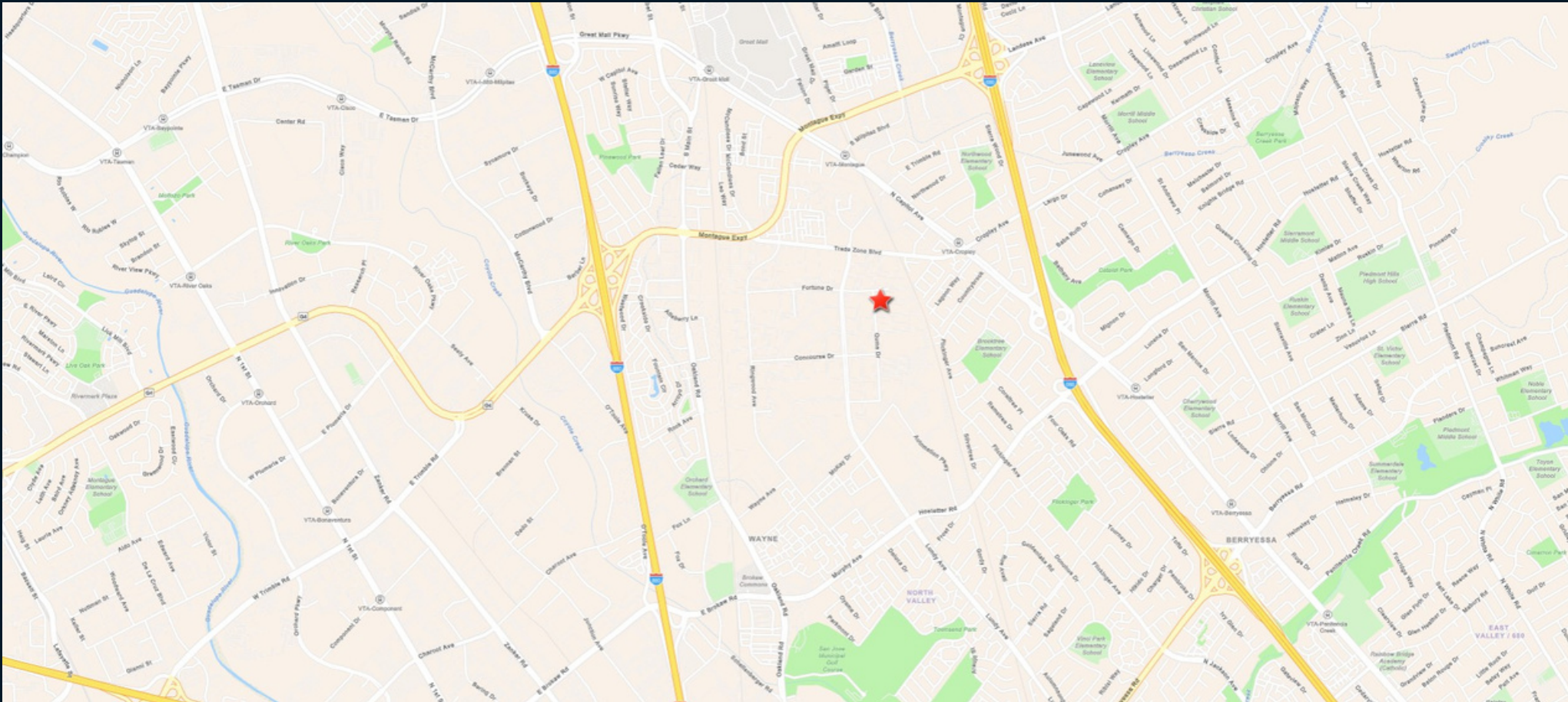
LAB SPACE

LAB 1	Water Distiller
LAB 2	Eyewash Station
LAB 3	Clean/Dry Air
LAB 4	110V, 15 amps

Flow Hood Dims.
 Lab #2 10' x 30'
 Lab #3 8' x 30'



2528 Qume Drive, Unit 6, San Jose



- Near Retail Amenities (Great Mall, Costco, Brokaw Commons, Sprouts @ Brokaw)
- Close to Light Rail and BART
- Easy Access to Interstate's 880 and 680 via Montague Expressway

JOEL YUNGEN
+1 650 480 2115
joel.yungen@jll.com
License #: 01850588

CONOR FLANNERY
+1 650 480 2207
conor.flannery@jll.com
License #: 01434412

JOE LONG
+1 650 480 2142
joe.long@jll.com
License #: 02106412