

915 S Duncan Ave, Los Angeles, CA 90022

Louis Chavez
President
(323) 422-1910
info@lccinvestgroup.com
Lic: 01949822

Gay-Lynn Barnes
Vice President
(562) 858-7065
gbarnes@barnescre.com
Lic: 01433767

exp
COMMERCIAL

THE SPACE

Location	915 S Duncan Ave, Los Angeles, CA, 90022
COUNTY	Los Angeles County
APN	5246-005-006, 5246-005-004

NUMBER OF STORIES:

3

AVAILABLE SF:

6,560 SF

LEASE RATE:

NNN Negotiable

LOT SIZE:

6,956 SF

BUILDING SIZE:

13,662 SF

ZONING:

C3

MARKET:

Los Angeles

SUBMARKET:

East Los Angeles

PROPERTY OVERVIEW

Community-Owned Real Estate (CORE) is a joint initiative by three nonprofits: East LA Community Corporation, Inclusive Action for the City and Little Tokyo Service Center. CORE's mission is to preserve and create stable commercial real estate space for small business and community-based organizations.

PROPERTY HIGHLIGHTS:

- 3 Floors For Lease, 3 Story Brick Building
- Parking with 20 + spaces at 4516 Whittier Blvd.
- Shell Complete, Creative / Flex Space /Office For Lease
- 1 FL ADA Lift, Lite Buildout Option, Restroom on each floor
- New HVAC, New Plumbing, New Electrical, Full Rehab
- Open Layout, Break Room/Kitchenette Area
- Area Amenities: Latino Walk of Fame, Target, Regency Theater, East LA Civic Center, Commerce Casino, Citadel Outlets, La Azteca Tortilleria, So-Cal Burgers, Lilianas Tamales, Ford Elementary, AIA Middle School, Garfield High School, East Los Angeles College and



Usable Space ~ 1,650 Sq. Ft.
915 S Duncan Ave , Los Angeles, CA 90022

Usable Space ~ 1,650 Sq. Ft.

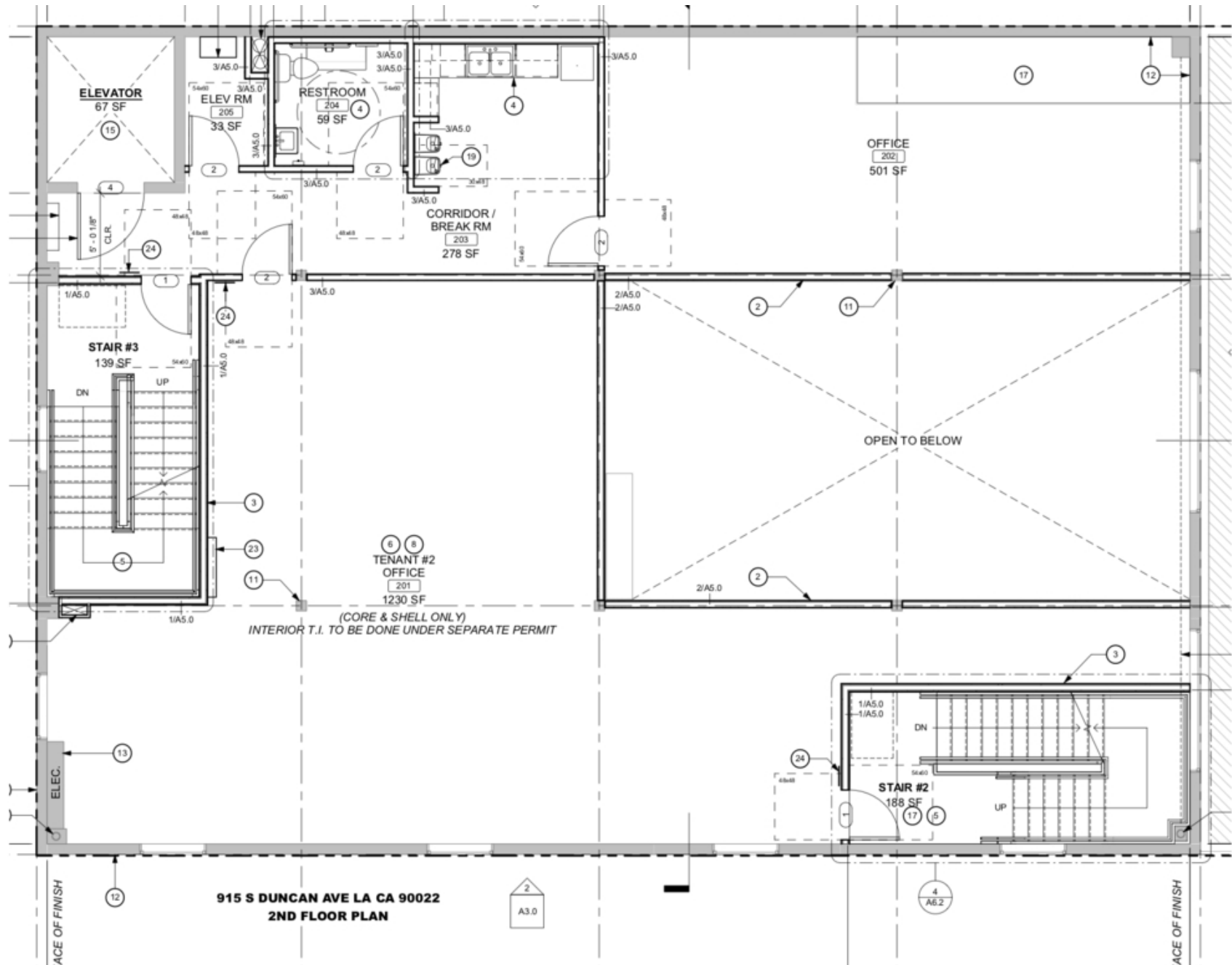
915 S Duncan Ave , Los Angeles, CA 90022



2ND FLOOR PLAN

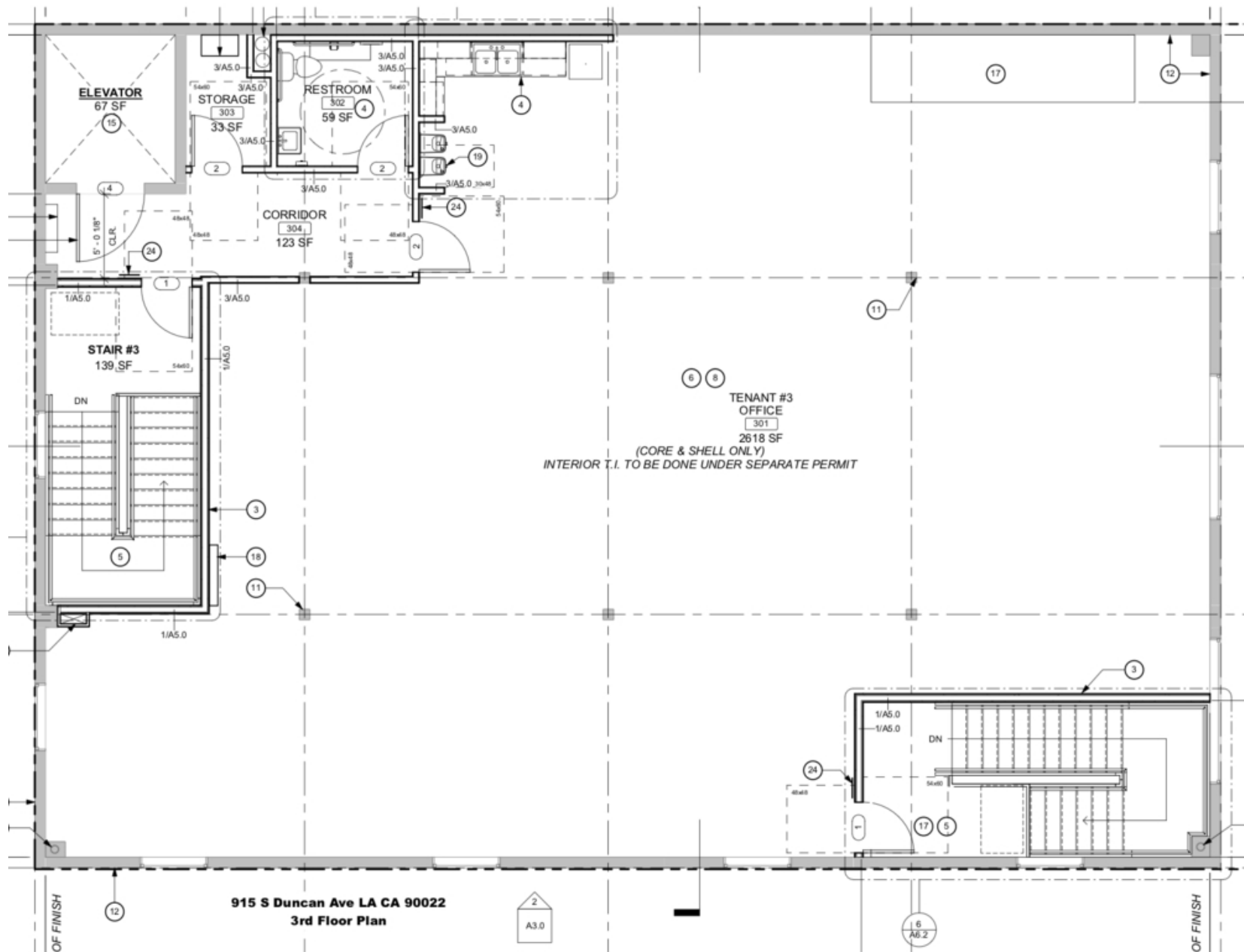
Usable Space ~2,070 Sq. Ft.

915 S Duncan Ave , Los Angeles, CA 90022



Usable Space ~2,840 Sq. Ft.
915 S Duncan Ave , Los Angeles, CA 90022

915 S Duncan Ave , Los Angeles, CA 90022



915 S Duncan Ave , Los Angeles, CA 90022

LOCATION DESCRIPTION

915 S Duncan is centrally located on the Latino walk Of Fame intersecting Whittier Boulevard and Duncan Ave near the East L.A. historic Landmark sign. This busy shopping mecca is full of car and foot traffic from local residents and tourist alike. East Los Angeles is an incorporated area in Los Angeles County. Since its founding in the late 1880s has a long history of culture that can be found in its small shops, businesses, and community. Currently, has a population of 118,786. It is 66% Hispanic and Latino. It has been home to waves of immigration, and many different ethnic and cultural groups have at one time or another settled, lived, and moved through East Los Angeles. Making it a community with a vibrant history and strong traditions. Having some great restaurants, unique stores, businesses, and landmark locations, East L.A. is fundamental to the heritage of Los Angeles.

EXTERIOR DESCRIPTION

3 story fully rehabbed brick building built in 1929, located on a high traffic intersection and a public transit corridor. High foot traffic from students, residence, tourist and shoppers. Shared parking of 20+ spaces at 4516 Whittier Blvd. Parking adjacent to building.

INTERIOR DESCRIPTION

1st Floor ADA compliant Lift. 3 floors are available for lease. To be delivered shell complete. New HVAC, Plumbing & Electrical. Open Layout, kitchenette on each floor. Interior fully rehabbed. Restroom on each floor. 2nd and 3rd Floor with refinished wood flooring.



915 S Duncan Ave, Los Angeles, CA 90022



Louis Chavez

President
(323) 422-1910
info@lccinvestgroup.com
Lic: 01949822



Gay-Lynn Barnes

Vice President
(562) 858-7065
gaylynn@lccinvestgroup.com
Lic: 01186309

exp[®]
COMMERCIAL

6716-B Greenleaf Ave, Whittier, CA 90601