

515 FOLSOM ST
SAN FRANCISCO, CA 94105



CODY KOLLMANN
Founding Principal
E: ckollmann@lee-associates.com
C: (415) 535-3313
LIC: 02048359

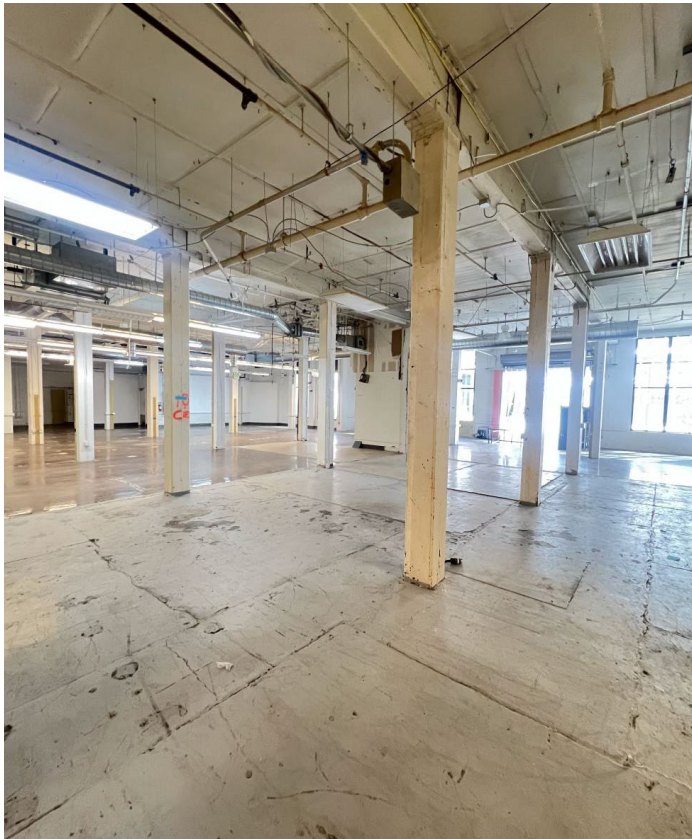
**1ST FLOOR
NOW AVAILABLE**

Lee & Associates San Francisco Commercial Real Estate | 242 California Street, San Francisco, CA 94111 | www.lee-associates.com

All information furnished regarding property for sale, rental or financing is from sources deemed reliable, but no warranty or representation is made to the accuracy thereof and same is submitted to errors, omissions, change of price, rental or other conditions prior to sale, lease or financing or withdrawal without notice. No liability of any kind is to be imposed on the broker herein.

1ST FLOOR HIGHLIGHTS

- 9,500 SF
- Two (2) Restrooms and Kitchenette
- Freight Elevator
- Ample Natural Light
- +14' Clear Height
- One (1) Large Drive-in roll-up door
- One (1) Loading Dock with roll-up door
- 3 Phase/225 AMPS of Power
- M-1 Zoning



□ ■ GALLERY





 **LEE &
ASSOCIATES**
COMMERCIAL REAL ESTATE SERVICES

CODY KOLLMANN
Founding Principal
E: ckollmann@lee-associates.com
C: (415) 535-3313
LIC: 02048359

