

# GARDENS POINTE PROFESSIONAL BUILDING

3507 KYOTO DRIVE, PALM BEACH GARDENS, FL 33410

SUITE 110



## SPACE HIGHLIGHTS

- 1,215 SF
- Ground floor corner suite
- 3 private offices and open area
- Reception
- Kitchen
- Offices are along the window line
- Building has impact glass and a generator
- Located on a beautiful lake with fountains
- Paver walkway with outdoor seating
- Walking bridge to Downtown Palm Beach Gardens



## JUDY MONTELLA

Executive Vice President/Certified Property Manager / Broker Associate  
Direct: 954.491.5505 | Cell: 954.676.1860  
judy@levyrai.com





# GARDENS POINTE PROFESSIONAL BUILDING

3507 KYOTO DRIVE, PALM BEACH GARDENS, FL 33410

## SUITE 110 ADDITIONAL PHOTOS



### JUDY MONTELLA

Executive Vice President/Certified Property Manager / Broker Associate  
Direct: 954.491.5505 | Cell: 954.676.1860  
judy@levyrai.com



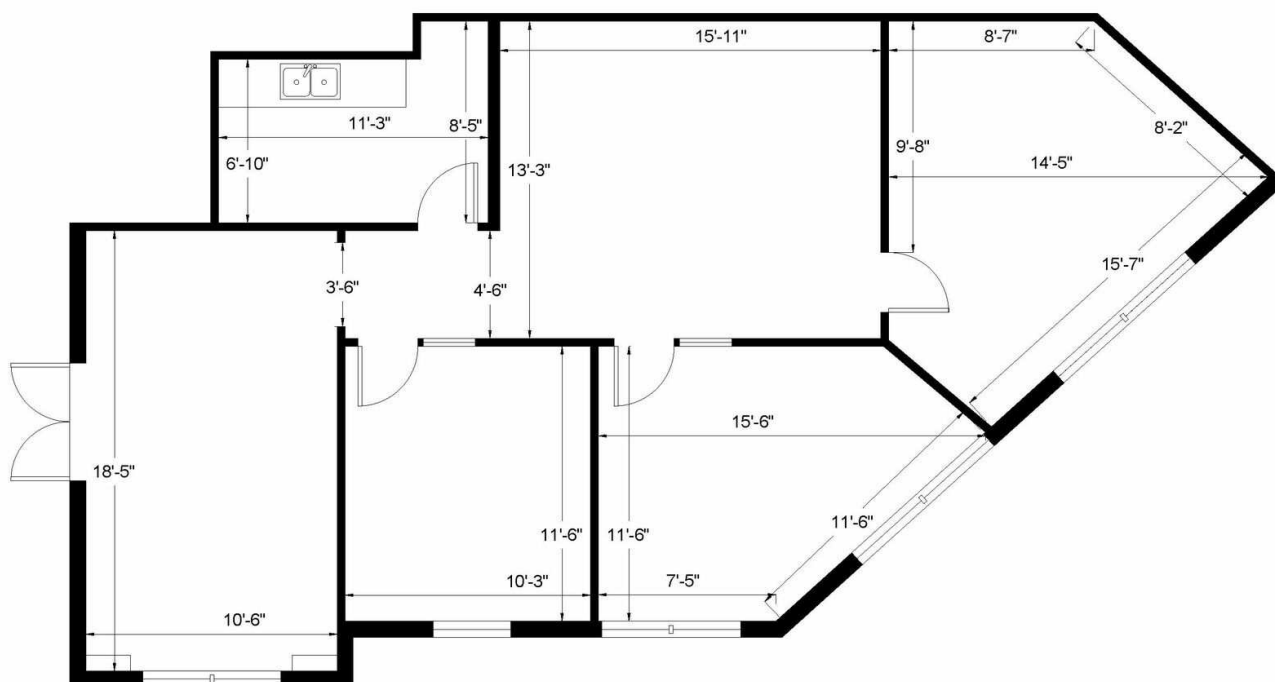
# GARDENS POINTE PROFESSIONAL BUILDING

3507 KYOTO DRIVE, PALM BEACH GARDENS, FL 33410

## SUITE 110 FLOOR PLAN

### GARDENS POINTE PROFESSIONAL BLDG.

3507 Kyoto Gardens Drive, Suite 110 | Palm Beach Gardens, FL 33410



1,215 Rentable Sq. Ft.  
[www.LevyRealtyAdvisors.com](http://www.LevyRealtyAdvisors.com)

#### JUDY MONTELLA

Executive Vice President/Certified Property Manager / Broker Associate  
 Direct: 954.491.5505 | Cell: 954.676.1860  
[judy@levyrai.com](mailto:judy@levyrai.com)

