

27555 COLLEGE PARK DR  
WARREN, MICHIGAN

INDUSTRIAL FOR LEASE  
34,747 Square Feet Available



**SIGNATURE  
ASSOCIATES**  
KNOW SIGNATURE | KNOW RESULTS

## GREAT MANUFACTURING BUILDING



### PROPERTY FEATURES

- 34,747 square feet available
- 4,140 square feet office
- 17' clear height
- (4) 12'X14' grade level doors; (2) truckwells
- Very clean with natural lighting throughout
- Buss Duct power distribution
- Seconds from I-696
- Drive-through capability
- Multiple cranes
- Lease Rate: \$6.50/sq.ft. NNN



For more information, please contact:

**BEN WILKEMEYER**  
(248) 359 0624  
bwilkiemeyer@signatureassociates.com

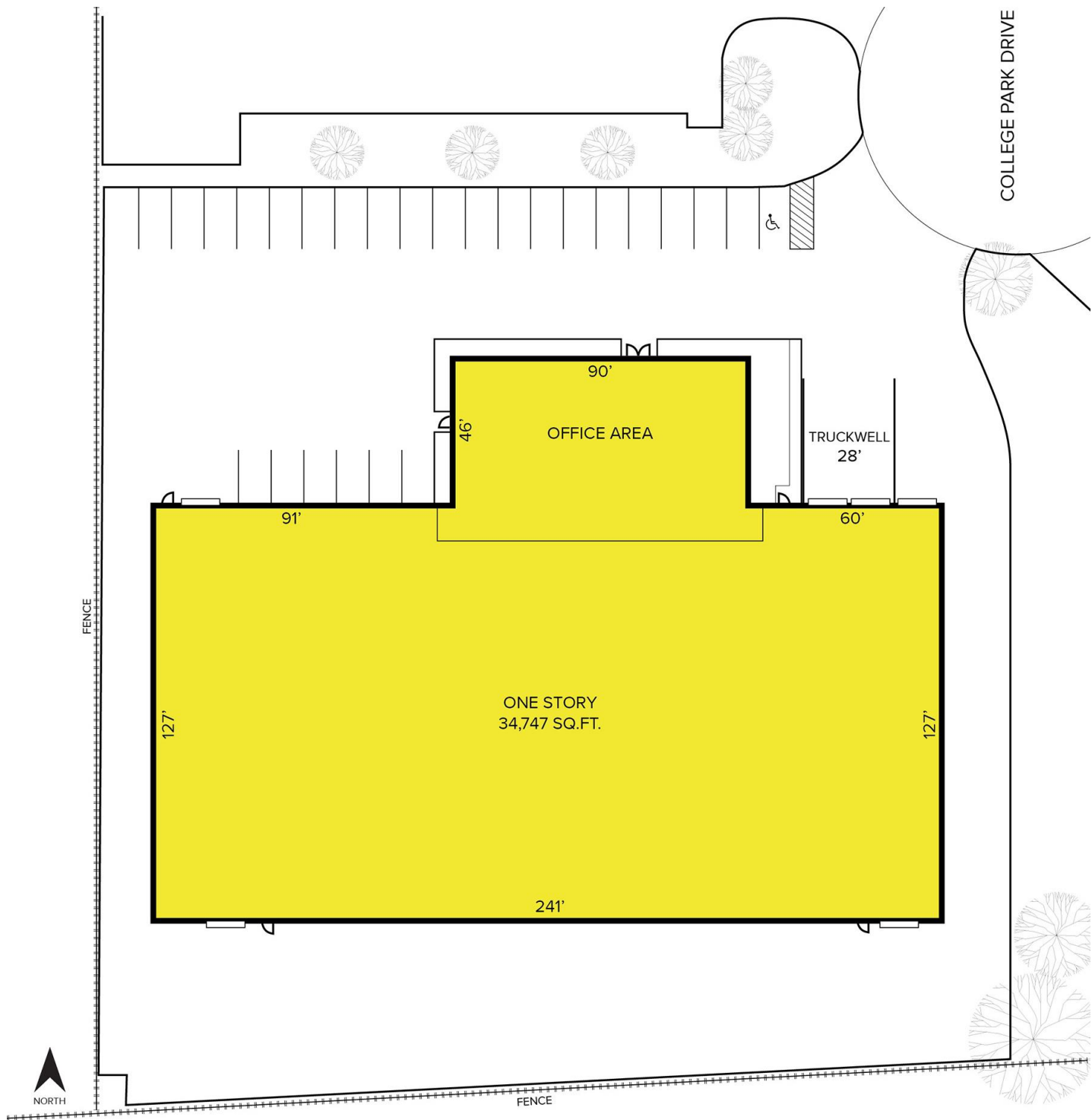
**PAUL SAAD**  
(248) 359 0652  
psaad@signatureassociates.com

**SIGNATURE ASSOCIATES**  
One Towne Square, Suite 1200  
Southfield, MI 48076  
www.signatureassociates.com

27555 College Park Drive – Warren, Michigan  
Industrial For Lease

34,747  
Square Feet  
AVAILABLE

Site Plan



For more information, please contact:

**BEN WILKIEMEYER**  
(248) 359 0624  
bwilkiemeyer@signatureassociates.com

**PAUL SAAD**  
(248) 359 0652  
psaad@signatureassociates.com

**SIGNATURE ASSOCIATES**  
One Towne Square, Suite 1200  
Southfield, MI 48076  
www.signatureassociates.com

Information is subject to verification and no liability for errors or omissions is assumed. Price is subject to change and listing withdrawal.

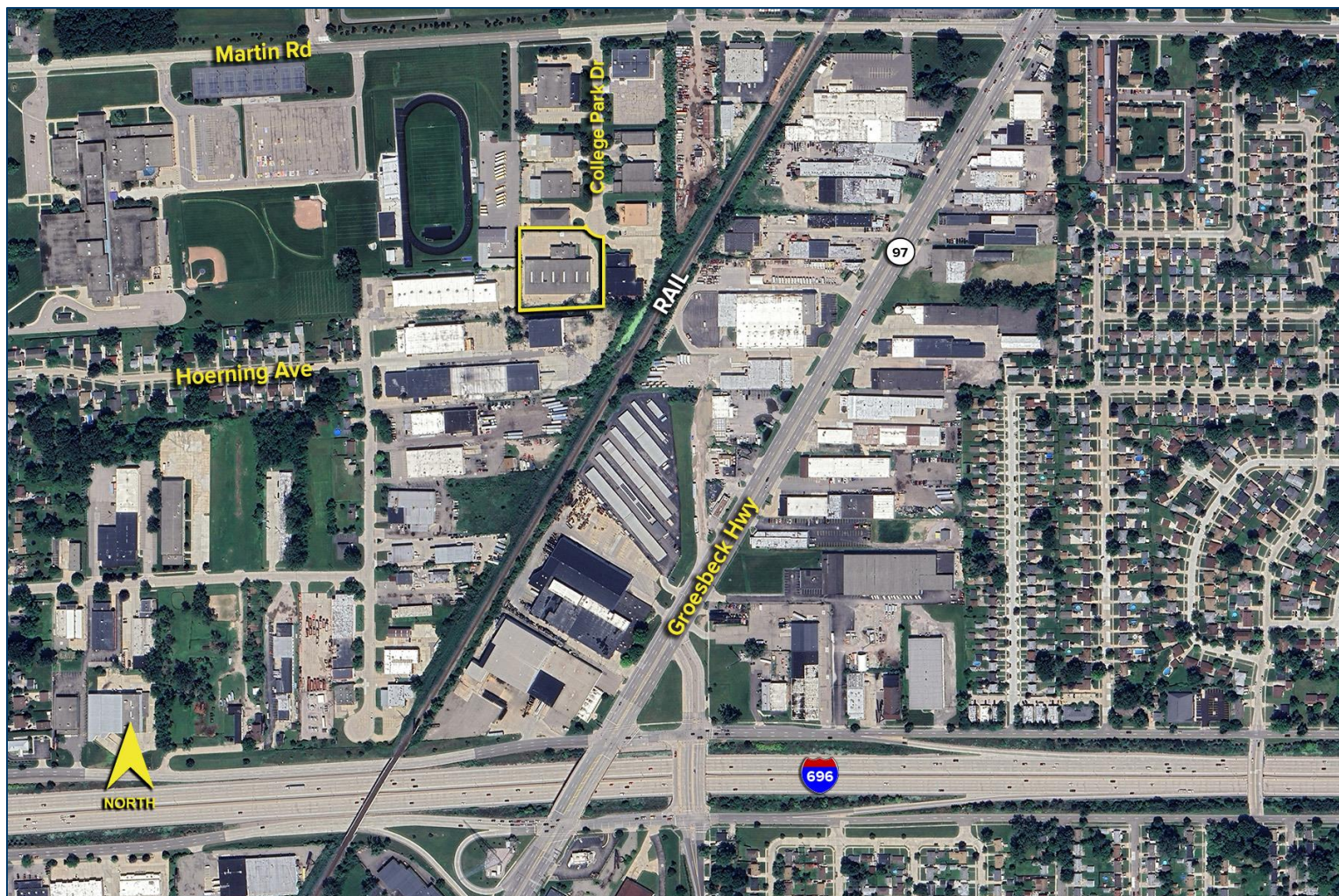


# 27555 College Park Drive – Warren, Michigan

## Industrial For Lease

34,747  
Square Feet  
AVAILABLE

Aerial



For more information, please contact:

**BEN WILKEMEYER**

(248) 359 0624

[bwilkiemeyer@signatureassociates.com](mailto:bwilkiemeyer@signatureassociates.com)

**PAUL SAAD**

(248) 359 0652

[psaad@signatureassociates.com](mailto:psaad@signatureassociates.com)

**SIGNATURE ASSOCIATES**

One Towne Square, Suite 1200

Southfield, MI 48076

[www.signatureassociates.com](http://www.signatureassociates.com)

Information is subject to verification and no liability for errors or omissions is assumed. Price is subject to change and listing withdrawal.