



Available
For Lease

Rob Black
Senior Vice President
+ 1 804 267 7203
rob.black@colliers.com

Robby Brownfield
Senior Vice President
+1 804 267 7227
robby.brownfield@colliers.com

8970 Courthouse Rd., Spotsylvania, VA

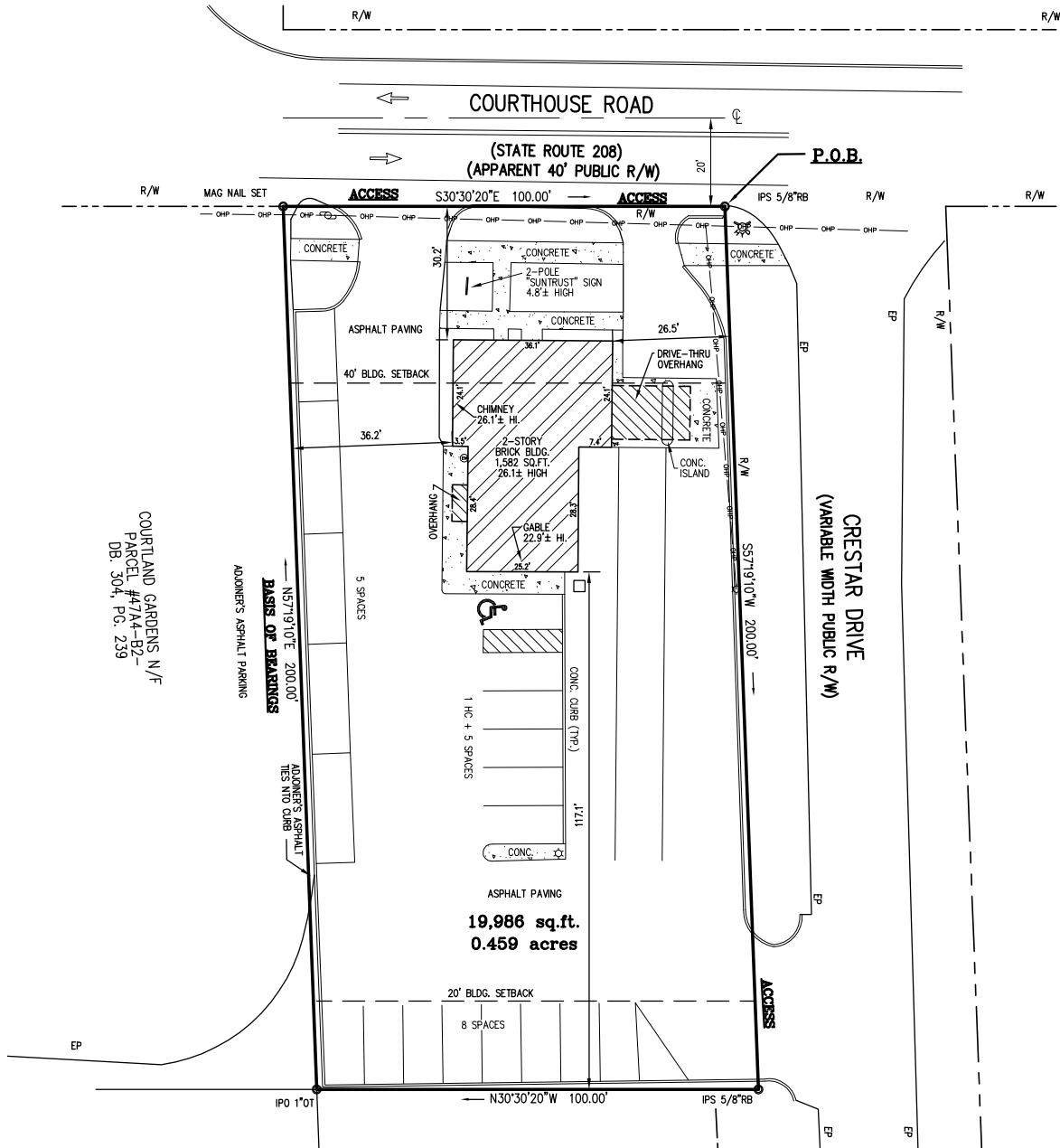
Located across from Spotsylvania County Government Complex

- 0.459 acres (19,986 SF)
- 1,582 SF building
- Courthouse Road – 7,718 VPD
- Zoned C2
- 19 parking spaces

2221 Edward Holland Dr
Suite 600 | Richmond, VA
P: +1 804 320 5500
colliers.com/richmond

Copyright © 2023 Colliers International. Information herein has been obtained from sources deemed reliable, however its accuracy cannot be guaranteed. The user is required to conduct their own due diligence and verification.

8970 Courthouse Rd



Demographics



2022 population
3,355

(1 miles)

10,624

(3 miles)

48,749

(5 miles)



2022 Average Household Income
\$98,523

(1 miles)

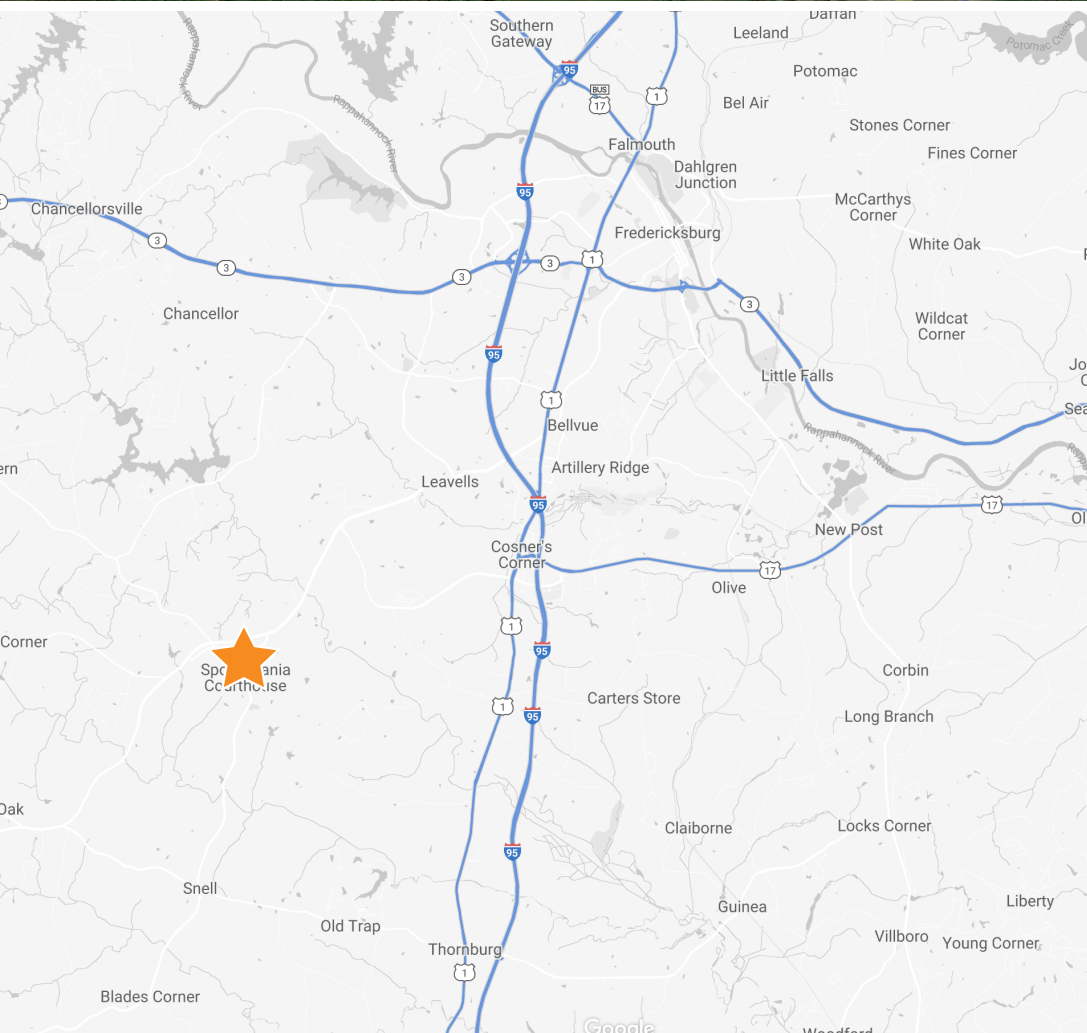
\$122,219

(3 miles)

\$119,612

(5 miles)

8970 Courthouse Rd



Contact us:

Rob Black
Senior Vice President
+ 1 804 267 7203
rob.black@colliers.com

Robby Brownfield
Senior Vice President
+1 804 267 7227
robby.brownfield@colliers.com

Colliers
2221 Edward Holland Dr
Suite 600 | Richmond, VA
P: +1 804 320 5500