

# 2229 WASHINGTON AVE



## FOR LEASE *IN SAN LEANDRO, CA*

 **LEE &  
ASSOCIATES**  
COMMERCIAL REAL ESTATE SERVICES

THOMAS NIU  
Senior Vice President  
(415) 260-9976  
tniu@lee-associates.com  
License ID# 1195261

JEFFREY IDA  
Founding Principal  
(415) 828-7679  
jida@lee-associates.com  
License ID# 01826381



# PROPERTY DETAILS

**FIRM RATE: \$11K IG / MONTH**

**BUILDING PRICE RATE** **\$1.50/SF**

**YARD PRICE RATE** **\$0.50/SF**

**POWER** **200 Amps, 240 Volt, 3 Phase**

**ADDRESS** **2229 Washington Avenue  
@ Marina Blvd**

**TOTAL BUILDING SF** **±5,300 SF**

SPACE A ±1,959 SF

SPACE B ±1,306 SF

SPACE C ±2,000 SF

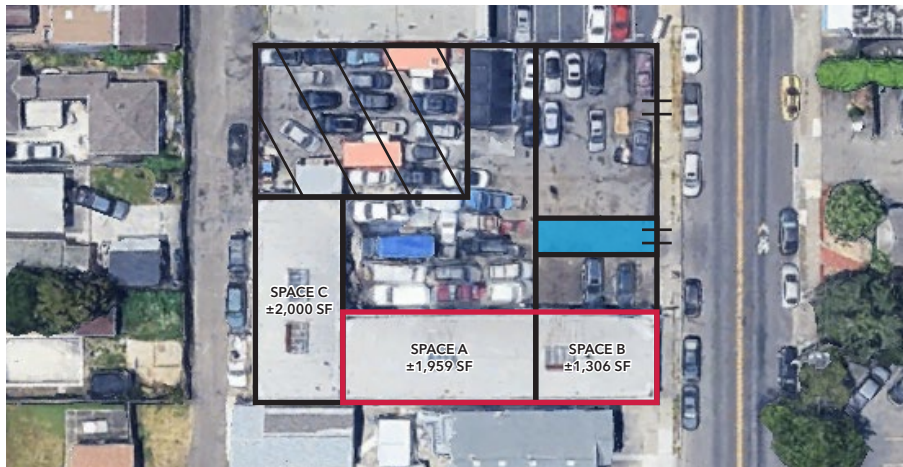
**TOTAL YARD SF** **±8,133 SF**

YARD A ±4,109 SF

YARD B ±4,024 SF

Zoning: Commercial Community - allows commercial centers containing a wide variety of commercial establishments, including banking and financial establishments, and businesses selling home furnishings, apparel, durable goods, and specialty items and generally having a citywide market area. Facilities, such as entertainment, eating-and drinking establishments, hotels and motels are permitted.

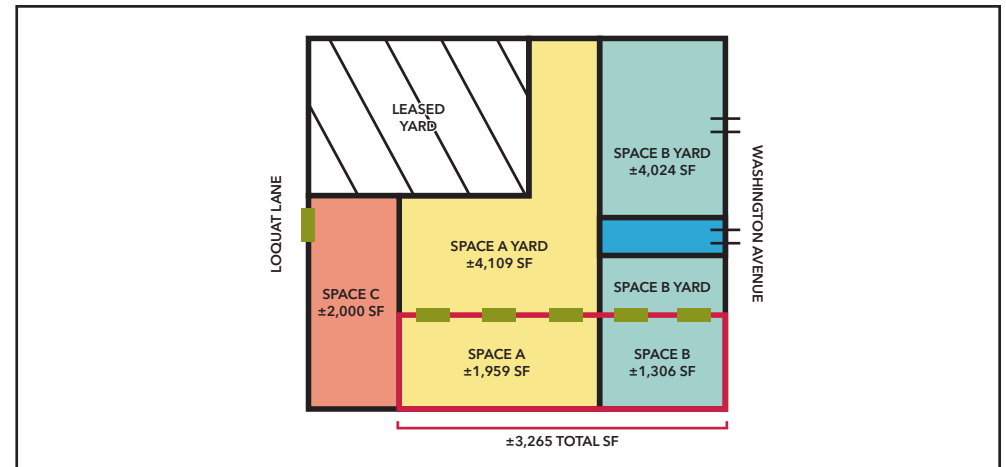
**EXHIBIT A**



**PREMISES =** —

**EASEMENT AREA =** —

**EXHIBIT B**



**ROLL-UP DOOR =** —

**EASEMENT AREA =** —

**CURB CUT =** —



# EXTERIOR





# INTERIOR

