

257-261 WEST 38TH STREET

BETWEEN SEVENTH & EIGHTH AVENUES



257-261 WEST 38TH STREET

BETWEEN SEVENTH & EIGHTH AVENUES

BUILDING DESCRIPTION

Built circa 1927, the subject space available for lease is on the 6th floor of a 17-story building facing the street with large multiple windows, 55' frontage, dual passenger and single freight elevator.

Centrally located in midtown/garment center, just blocks from theater district, Madison square garden, multiple means of transportation that includes multiple subway lines, port authority bus station, Pennsylvania station, LIRR, NJ Transit, Amtrak, Path Trains and Grand Central Station.

ADDRESS

257-261 West 38th Street
7th & 8th Avenues

UNITS AVAILABLE

Entire 16th Floor - 5,250 SF

CEILING HEIGHT

11.5 Feet

POSSESSION

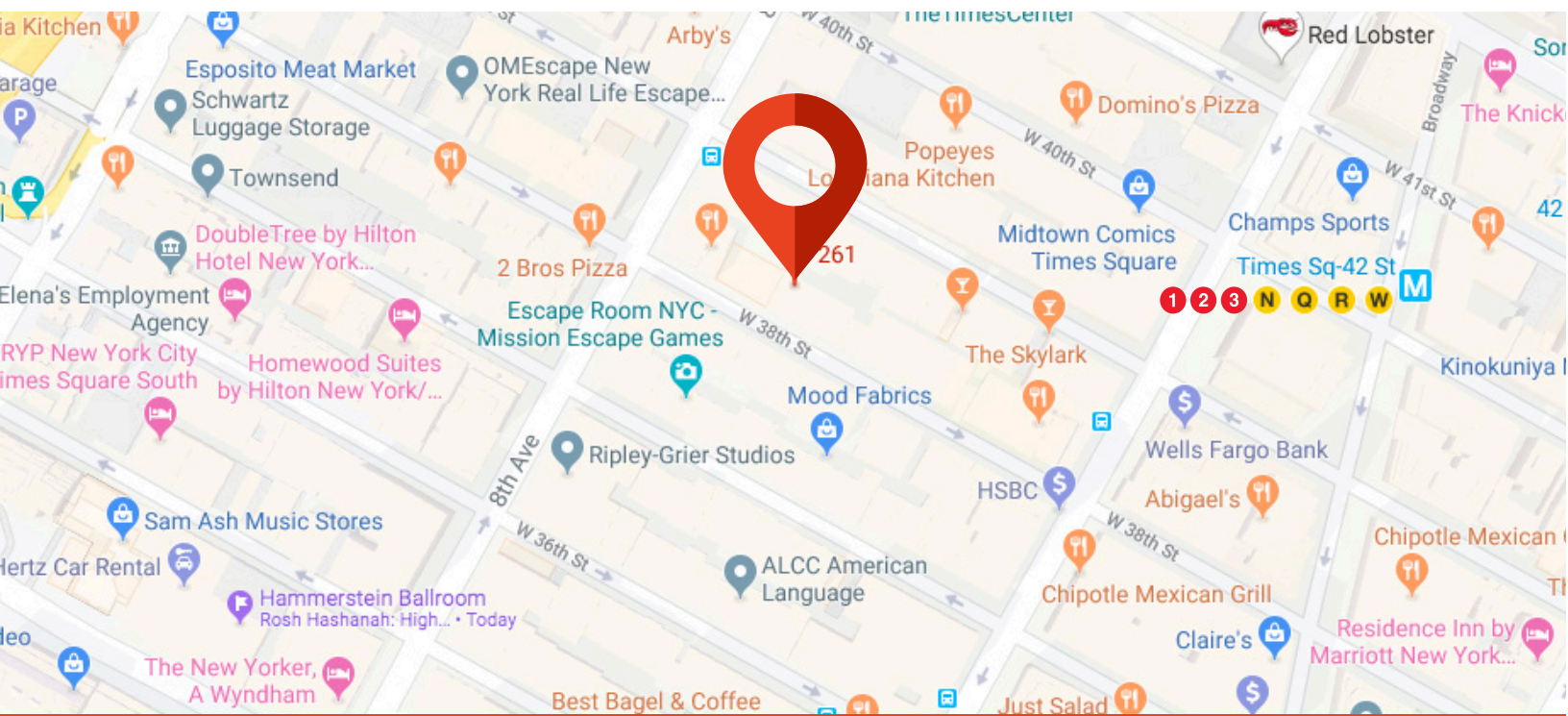
ASAP

HIGHLIGHTS

16th Floor:

- 3 Bathrooms with Shower
- Built out offices
- Great natural lighting
- Pantry

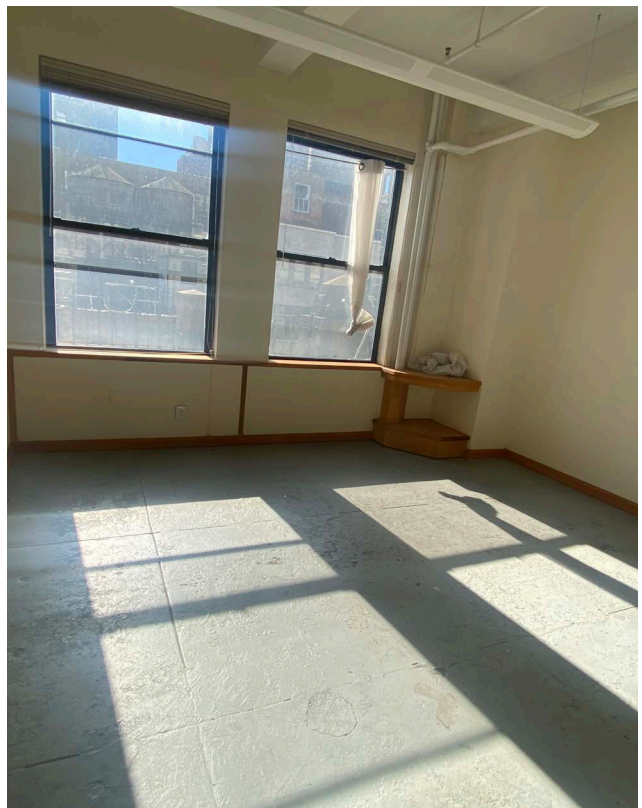
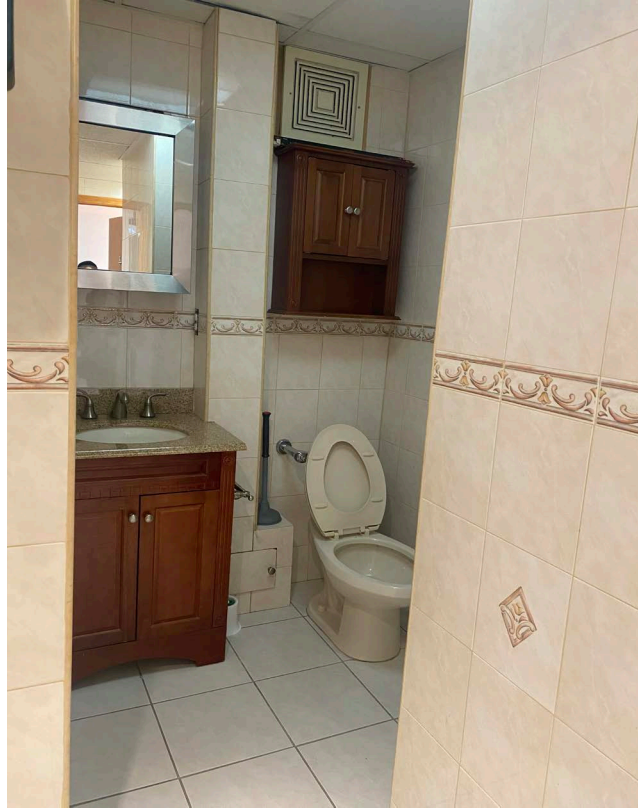
TRANSPORTATION



257-261 WEST 38TH STREET

BETWEEN SEVENTH & EIGHTH AVENUES

ENTIRE 16TH FLOOR - 5,250 SF



CONTACT OUR BROKER
FOR MORE INFORMATION:

JEFF GEOGHEGAN

212.945.89842

JeffG@ksrny.com

MILES SABBAGH

646.894.3176

Miles@ksrny.com



KASSIN SABBAGH REALTY

1385 Broadway

22nd Floor

New York, NY 10018

www.ksrny.com

All information supplied in this marketing presentation and/or flyer is from sources deemed reliable and is furnished subject to errors, omissions, modifications, removal of listings from sale/lease and to any listing condition. Any square footage, dimensions, floor plans and/or technical data set forth are approximations and are subject to further elaboration/confirmation.