



**CUSHMAN &  
WAKEFIELD**  
Commercial Kentucky

SPENCER COUNTY  
HIGH SCHOOL

TAYLORSVILLE ROAD



TAYLORSVILLE ROAD  
11,135 DAILY AADT



NEW  
TACO BELL

SOLD

SOLD

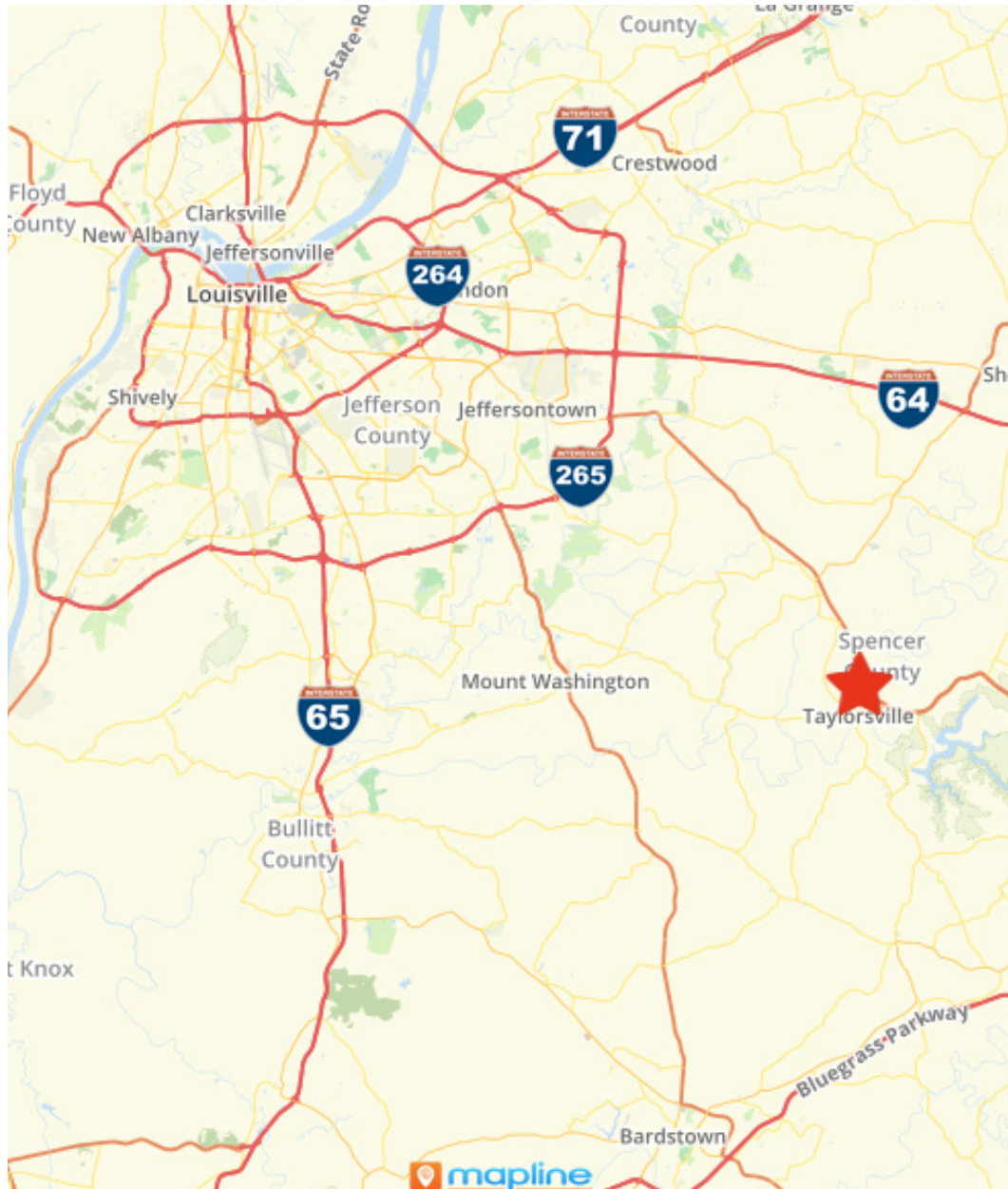
20.02 AC TOTAL  
AVAILABLE

**FOR SALE**

**20.02 ACRES**  
RETAIL DEVELOPMENT  
OPPORTUNITY

**210 INDUSTRIAL ROAD**  
TAYLORSVILLE, KY 40071

# PROPERTY INFORMATION



## 210 Industrial Road, Taylorsville, KY 40071

**Summary** Cushman & Wakefield | Commercial Kentucky, Inc. is pleased to present this retail development opportunity for sale in Taylorsville, KY. This offering consists of 20.02 acres primed for retail development. Buyers can purchase anywhere from 0.5 acres to the full 20.02 acres. The property sits directly on Taylorsville Road providing high visibility to commuters.

Ownership has already sold some neighboring land which is currently under development: 5 acres to Spencer County for a future community center and 2 acres to a senior assisted living facility.

**Price Per Acre** \$195,000 | Price per acre for 1.0 acre or less

\$175,000 | Price per acre for more than 1.0 acre

\$160,000 | Price per acre for total acreage

**Location** Located on Taylorsville Road in Taylorsville, KY. Local population is 1,268 people (2021 Census).

**Acreage** 20.02 Acres

**Zoning** Zoned AG-Agricultural

**Traffic Count** AADT: 11,135 on Taylorsville Road

### TRANSACTION TEAM

#### SAM GRAY

SENIOR ASSOCIATE  
+1 502.589.5150 ext. 240  
samgray@commercialkentucky.com

#### BRENT DOLEN, SIOR, CCIM

SENIOR DIRECTOR  
+1 502.589.5150 ext. 262  
bdolen@commercialkentucky.com

#### GREG CHARMOLI

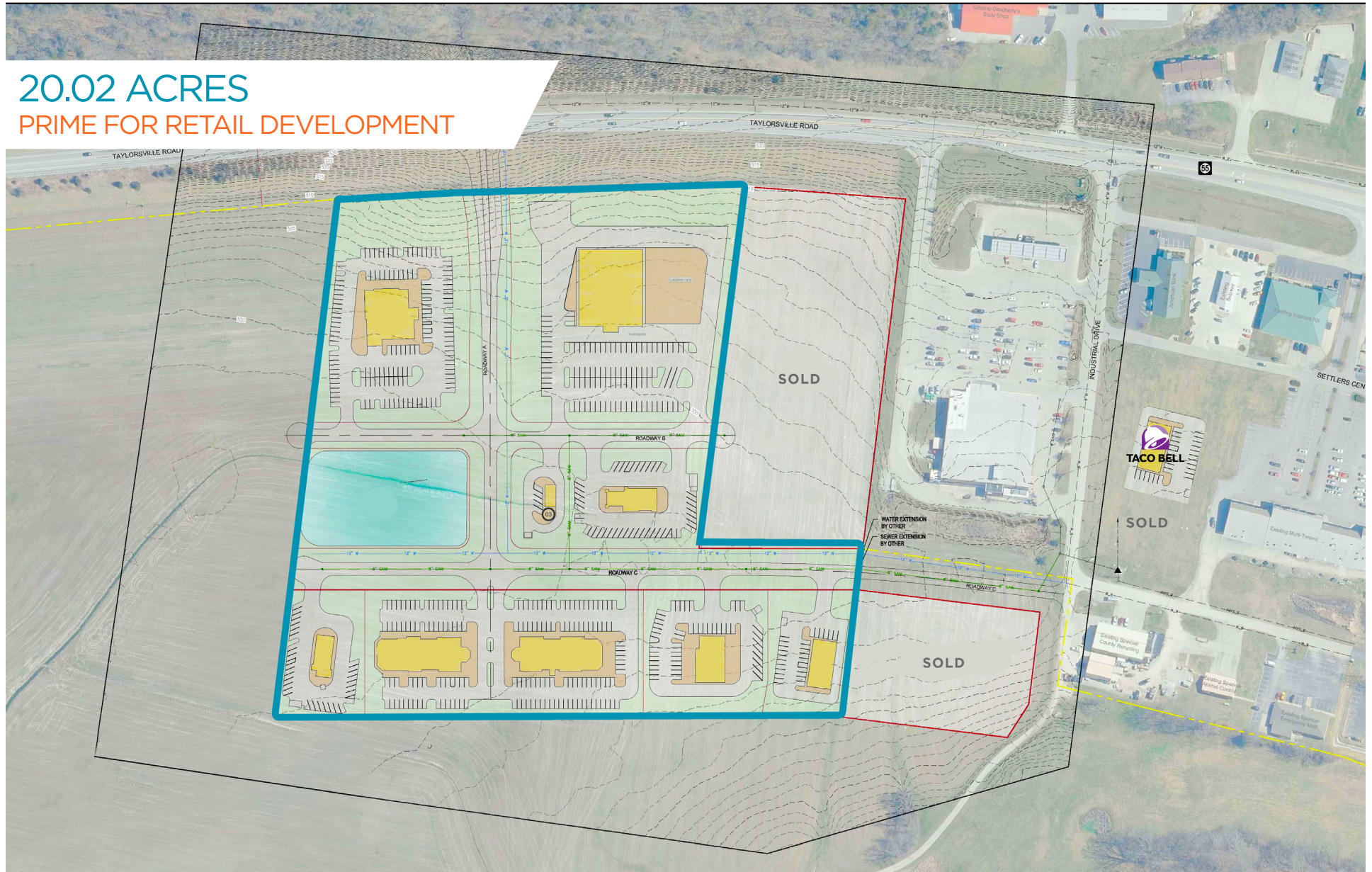
SENIOR DIRECTOR  
+1 502.589.5150 ext. 238  
gcharmoli@commercialkentucky.com



# RETAIL CONCEPT MAP

20.02 ACRES

PRIME FOR RETAIL DEVELOPMENT



## TRANSACTION TEAM

**SAM GRAY**

SENIOR ASSOCIATE

+1 502.589.5150 ext. 240

samgray@commercialkentucky.com

**BRENT DOLEN, SIOR, CCIM**

SENIOR DIRECTOR

+1 502.589.5150 ext. 262

bdolen@commercialkentucky.com

**GREG CHARMOLI**

SENIOR DIRECTOR

+1 502.589.5150 ext. 238

gcharmoli@commercialkentucky.com

