

SOUTHEAST  
COMMONS

2121

S. BLACKHAWK ST.  
AURORA, CO 80014

**NAI**Shames Makovsky

**FOR LEASE | FULL FLOOR CLOSE TO LIGHT RAIL**

### Property Overview

- Full Floor Opportunity
- Abundant Parking Available
- Close Proximity to Numerous Restaurants, 8 Hotels
- Walking Distance to Light Rail

The surrounding area is a vibrant and diverse community offering a blend of residential comfort and urban convenience with proximity to several parks and recreational facilities. Nearby Utah and Jewell Wetlands Parks offer amenities such as an indoor pool, sports courts, and walking trails.

Transportation is convenient, with the Iliff light rail station just a short distance away, connecting commuters to the broader Denver metropolitan area via the H and R lines. The station also features a 600-space parking structure, facilitating park-and-ride options.

**Lease Rate: 19.00/RSF FSG**

NO WARRANTY OR REPRESENTATION, EXPRESS OR IMPLIED, IS MADE AS TO THE ACCURACY OF THE INFORMATION CONTAINED HEREIN, AND THE SAME IS SUBMITTED SUBJECT TO ERRORS, OMISSIONS, CHANGE OF PRICE, RENTAL OR OTHER CONDITIONS, PRIOR SALE, LEASE OR FINANCING, OR WITHDRAWAL WITHOUT NOTICE, AND OF ANY SPECIAL LISTING CONDITIONS IMPOSED BY OUR PRINCIPALS NO WARRANTIES OR REPRESENTATIONS ARE MADE AS TO THE CONDITION OF THE PROPERTY OR ANY HAZARDS CONTAINED THEREIN ARE ANY TO BE IMPLIED.



Bldg Size	21,408 SF
Availability	2nd Floor: 11,087 RSF
Parking	77 Surface 221 Covered

**Ana Sandomire**

303 565 3029

asandomire@shamesmakovsky.com

**Peter Knisely**

720 881 7534

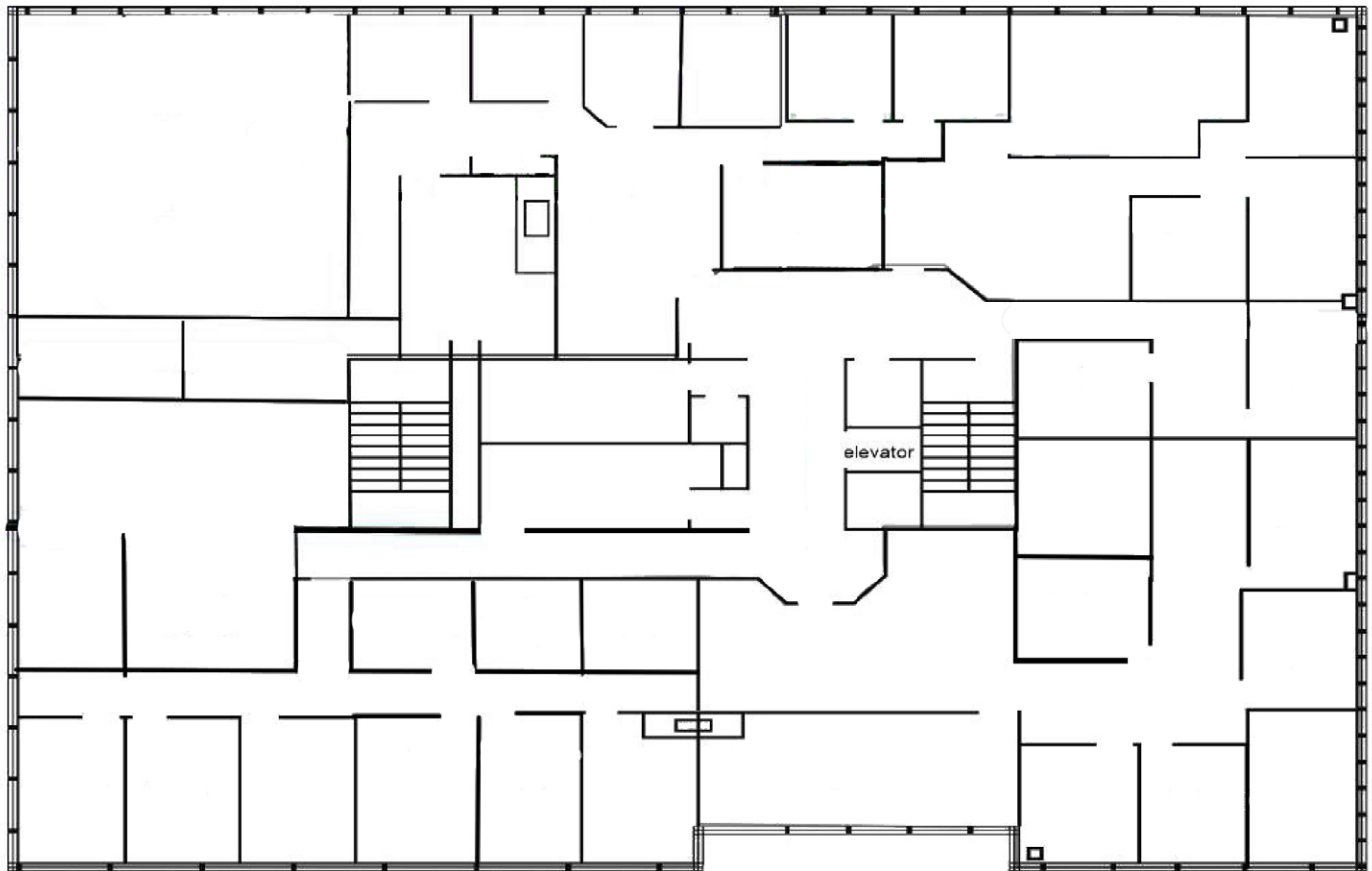
pknisely@shamesmakovsky.com

SOUTHEAST

COMMONS

# 2121

S. BLACKHAWK ST.  
AURORA, CO 80014



**Full 2nd Floor Available - 11,087 RSF**

**NAI**Shames Makovsky

**Ana Sandomire**

303 565 3029

[asandomire@shamesmakovsky.com](mailto:asandomire@shamesmakovsky.com)

**Peter Knisely**

720 881 7534

[pknisely@shamesmakovsky.com](mailto:pknisely@shamesmakovsky.com)





**JEWELL  
WETLANDS  
PARK**



SOUTHEAST  
COMMONS

**2121**

S. BLACKHAWK ST.  
AURORA, CO 80014

**E. Jewell Ave.**



**PROPERTY**



**E. Iliff Ave.**



**E. Yale Ave.**

**CHERRY CREEK  
RESERVOIR**