

4,770 SF  
OFFICE  
NOW AVAILABLE  
FOR LEASE

## Town and Country Business Plaza

1111 Town and Country Rd.  
Suite 24, 25, 26 Orange, CA



### PROPERTY HIGHLIGHTS:

- Fully built-out two-story office
- Competitive lease rate
- Convenient Central OC location
- Professional office setting
- Office and retail uses permitted
- Efficient floor plan
- Divisible to +/- 2K SF
- Easy access to 5, 57, 22, and 55 FWY's
- Ample parking
- Outdoor seating areas
- Several amenities nearby

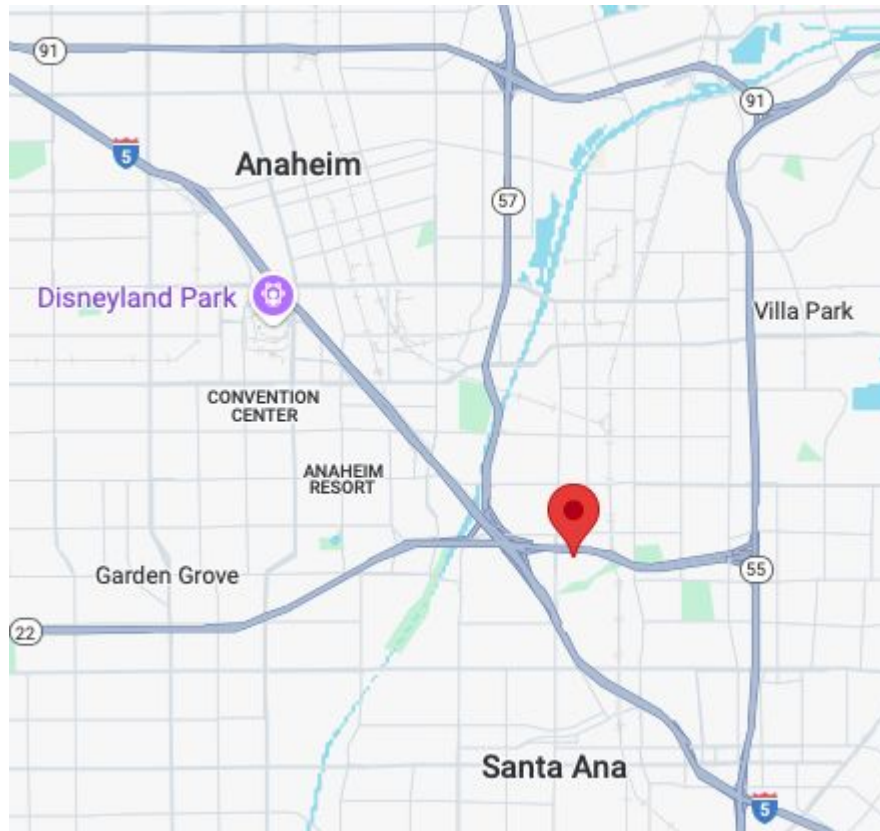
### Leasing Contact:

Justin Hugron, CCIM

714.642.7690

[justin@ashwillassociates.com](mailto:justin@ashwillassociates.com)

DRE# 02069980 Corp.DRE# 01291393

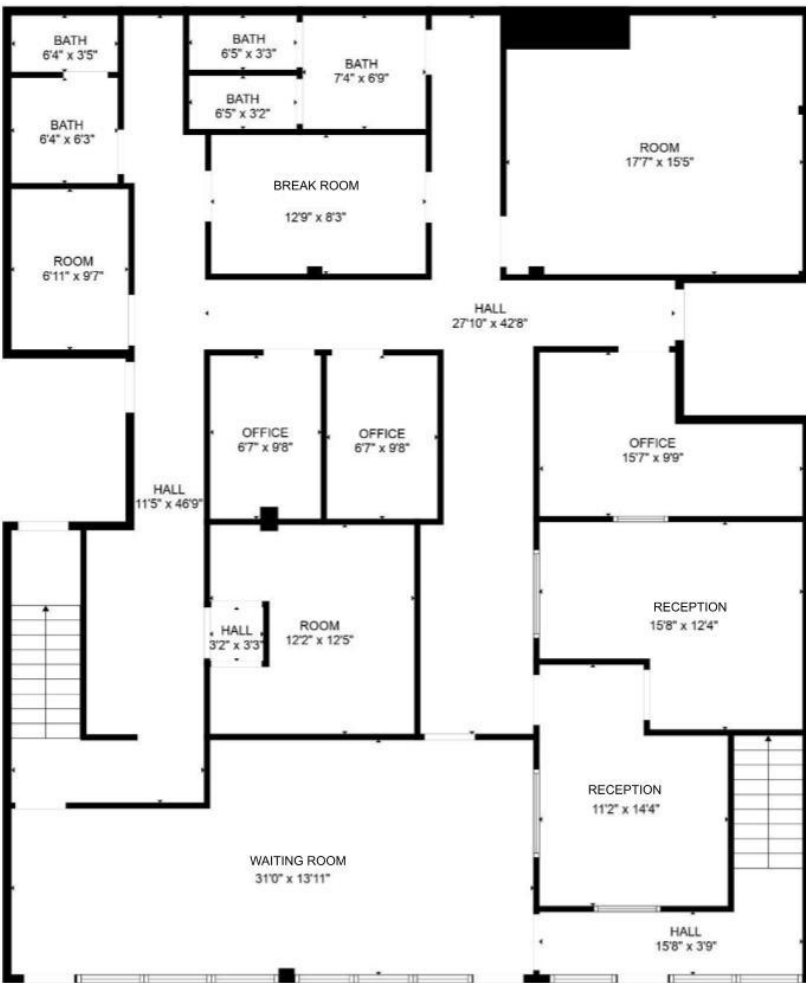


**Ashwill  
Associates**  
COMMERCIAL REAL ESTATE

# INTERIOR PHOTOS



# FLOOR PLAN & SUITE NOTES

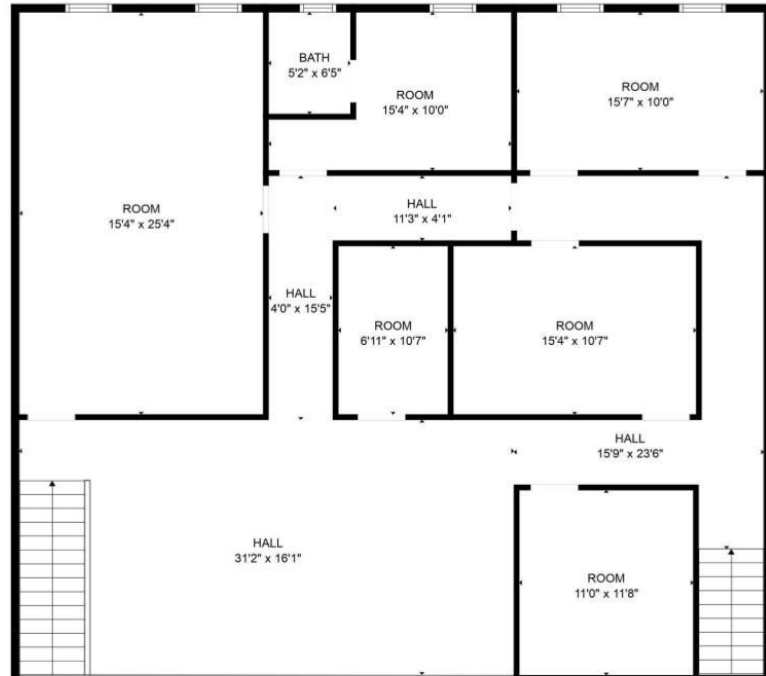


**First Floor**

## SUITE HIGHLIGHTS

- 1111 Town and Country. Suite
- 1,165 SF ground-floor suite
  - Reception/lobby
  - 4 Private window offices
  - 3 Entrances/Exits

**Second Floor**



# EXTERIOR PHOTOS



FOR MORE INFO  
OR TO TOUR:

Justin Hugron, CCIM

949.216.0469

[justin@ashwillassociates.com](mailto:justin@ashwillassociates.com)

DRE# 02069980 Corp.DRE# 01291393

**Ashwill**  
**Associates**  
COMMERCIAL REAL ESTATE