

UPPER EAST SIDE, NEW YORK, NY

114 WEST 17TH STREET

WEST 17TH STREET

BETWEEN SIXTH AND SEVENTH AVENUE

OFFICE OR MEDICAL SPACE FOR LEASE



PROPERTY DETAILS

PREMISES

7th Floor—Suite 1G: 2,000 square feet plus 1000 sq ft outdoor terraces

ENTRANCE

24 Hour Lobby Entrance within Elevator Building

POSSESSION

Immediate

TENANT

Previously Therapy Office

FEATURES

- 24 Hour Lobby Entrance within an Elevator Building
- Skylight Within Space Enhances Natural Light
- Towering High Ceilings
- Long Term Lease available
- Conveniently accessible via the 14th Street Subway and Union Square Transportation hub

ASKING RENT

\$10,000 per month (\$60 per sq ft) (Based on interior space)

SKYLIGHT WITHIN SPACE FOR BEAUTIFUL NATURAL LIGHT



Exclusively Represented by:

THE DANA COMMERCIAL TEAM

At Douglas Elliman Real Estate

GARY DANA

516-946-7207

gdana@elliman.com

RICK DANA

917-952-0624

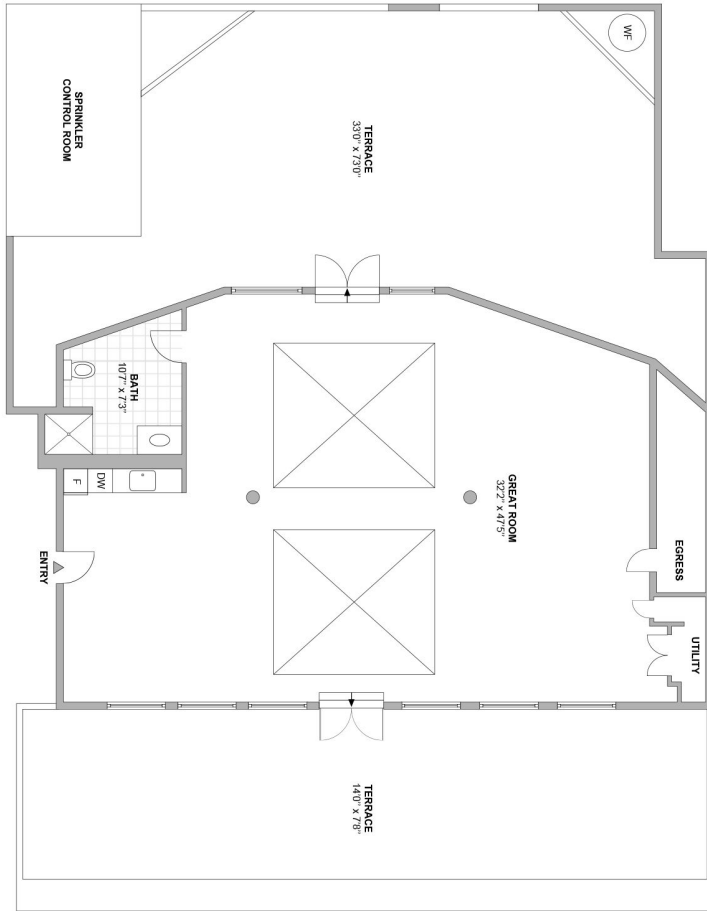
rdana@elliman.com

114 WEST 17TH STREET

BETWEEN SIXTH AND SEVENTH AVENUE



114 WEST 17TH STREET 7TH



Exclusively Represented by:

THE DANA COMMERCIAL TEAM

At Douglas Elliman Real Estate

GARY DANA

212.692.6183

gdana@elliman.com

RICK DANA

212.692.6182

rdana@elliman.com

CHRIS DANA

212.455.4721

cdana@elliman.com



THE DANA COMMERCIAL TEAM

Douglas Elliman EST. 1911
REAL ESTATE