



PRICE: \$450,000

# 2920 E LOOP 250

Midland , TX 79705

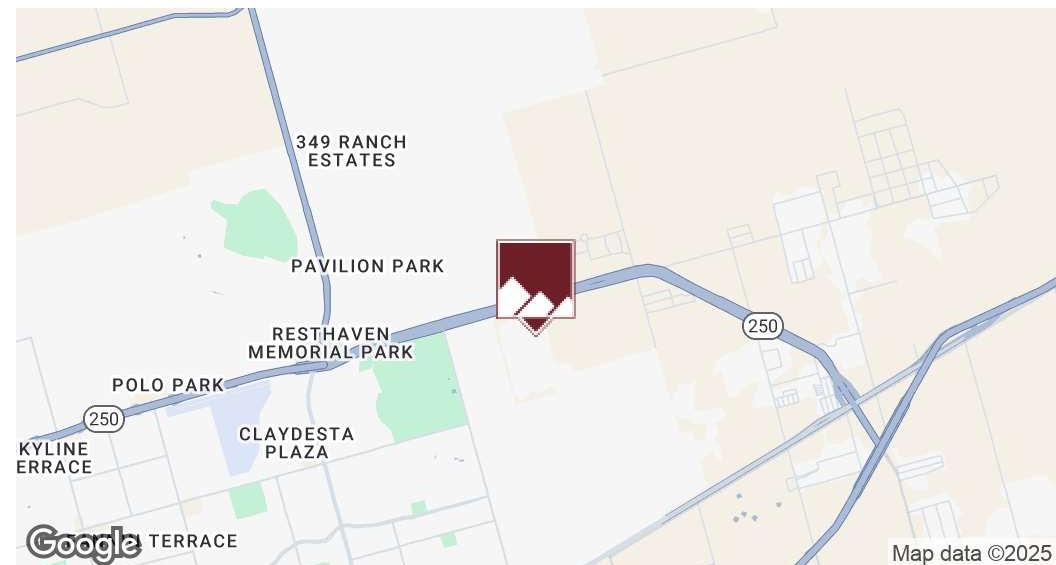
**John Elphick, CCIM**

Broker  
432.682.2510  
john@moriahgroup.net

PRICE: \$450,000

# 2920 E LOOP 250

Midland , TX 79705



## Property Description

Two lots for sale as one! Ideal for a future business (rezoning may be necessary) or your dream home. Zoned AE, allowing for livestock!

## Property Highlights

- Loop 250 Frontage
- Corner Lot at a New Intersection inside City Limits
- High Visibility from Loop 250 | Located in a high-traffic area
- Prime Retail Development | Raw Land
- Quick access to TX-349 (Big Spring St)
- Close proximity to retail, restaurants, Claydesta Plaza and Midland College

## Location Description

Located inside the city limits at the corner of Todd Dr. and Loop 250. Each lot is approximately 2.33 +/- acres per MidCAD.

## Offering Summary

|             |            |
|-------------|------------|
| Sale Price: | \$450,000  |
| Lot Size:   | 4.66 Acres |

## Demographics

|                   | 1 Mile   | 3 Miles  | 5 Miles  |
|-------------------|----------|----------|----------|
| Total Households  | 634      | 8,518    | 24,810   |
| Total Population  | 1,540    | 23,011   | 65,419   |
| Average HH Income | \$95,283 | \$90,502 | \$99,291 |

**John Elphick, CCIM**

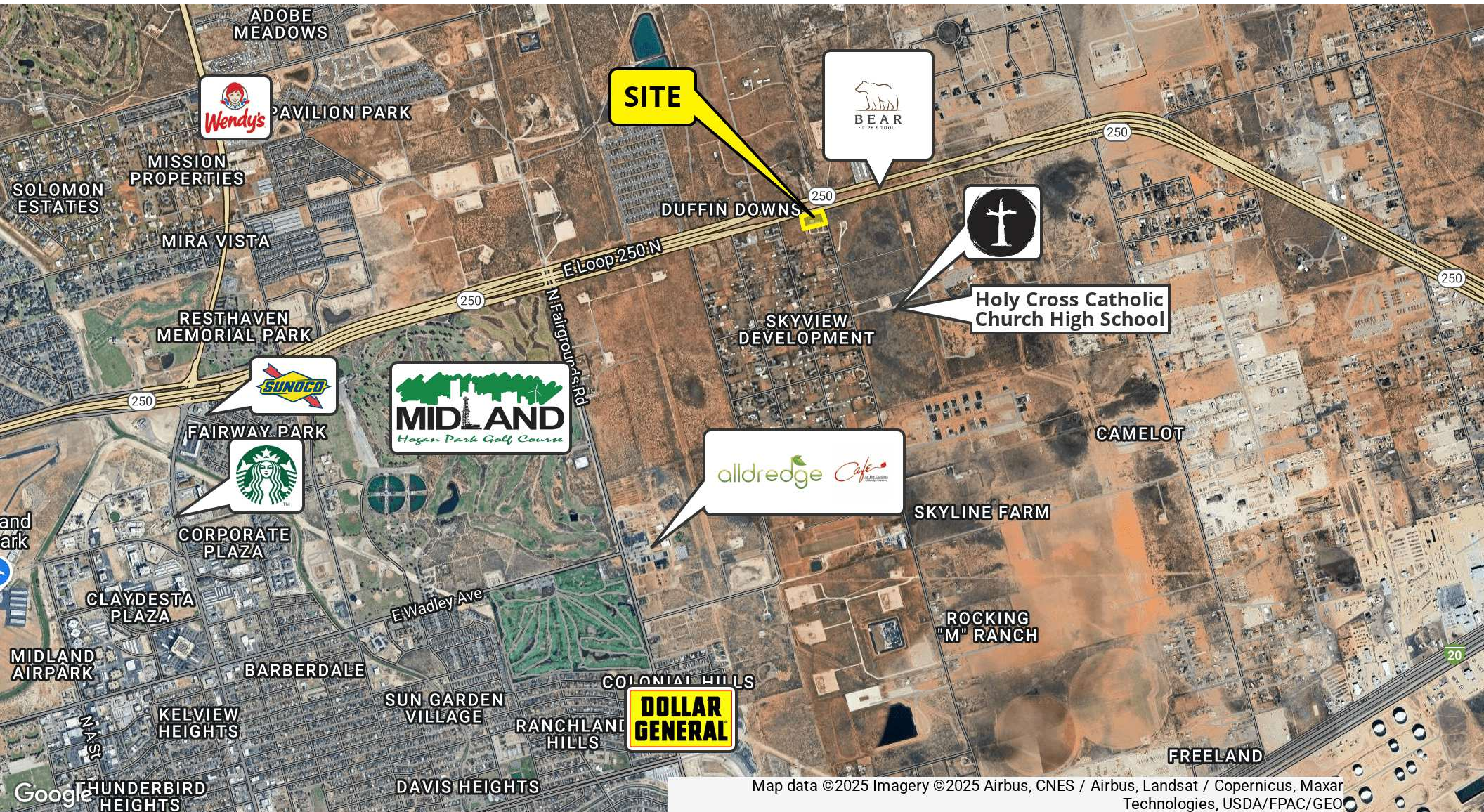
Broker  
432.682.2510  
john@moriahgroup.net

**MORIAH**  
BROKERAGE SERVICES, LLC

PRICE: \$450,000

# 2920 E LOOP 250

Midland , TX 79705



Map data ©2025 Imagery ©2025 Airbus, CNES / Airbus, Landsat / Copernicus, Maxar Technologies, USDA/FPAC/GEO

John Elphick, CCIM

Broker  
432.682.2510  
john@moriahgroup.net

**MORIAH**  
BROKERAGE SERVICES, LLC

PRICE: \$450,000

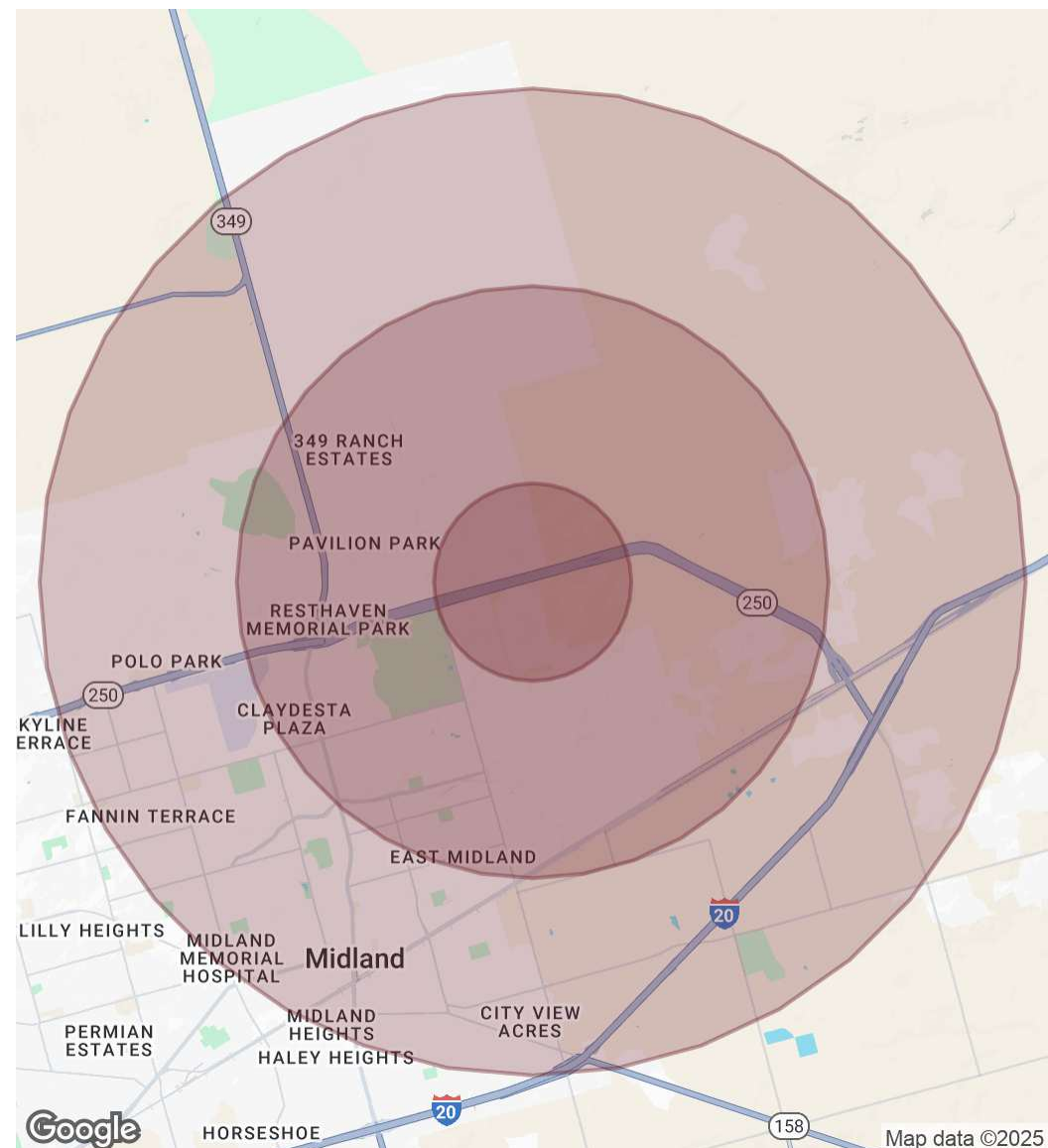
# 2920 E LOOP 250

Midland , TX 79705

| Population           | 1 Mile | 3 Miles | 5 Miles |
|----------------------|--------|---------|---------|
| Total Population     | 1,540  | 23,011  | 65,419  |
| Average Age          | 29.8   | 31.3    | 32.7    |
| Average Age (Male)   | 33.5   | 31.7    | 33.0    |
| Average Age (Female) | 26.7   | 31.1    | 33.8    |

| Households & Income | 1 Mile    | 3 Miles   | 5 Miles   |
|---------------------|-----------|-----------|-----------|
| Total Households    | 634       | 8,518     | 24,810    |
| # of Persons per HH | 2.4       | 2.7       | 2.6       |
| Average HH Income   | \$95,283  | \$90,502  | \$99,291  |
| Average House Value | \$190,004 | \$218,575 | \$238,031 |

2020 American Community Survey (ACS)



John Elphick, CCIM

Broker  
432.682.2510  
john@moriahgroup.net

**MORIAH**  
BROKERAGE SERVICES, LLC

# 2920 E LOOP 250

Midland , TX 79705

Contact Broker:

**John Elphick, CCIM**

Broker  
432.682.2510  
john@moriahgroup.net



15 Smith Road, Suite 6004, Midland, TX 79705  
432.682.2510 | moriahbrokerageservices.com