

Retail Showroom with High Visibility

For Sale/Lease

3,445 SF

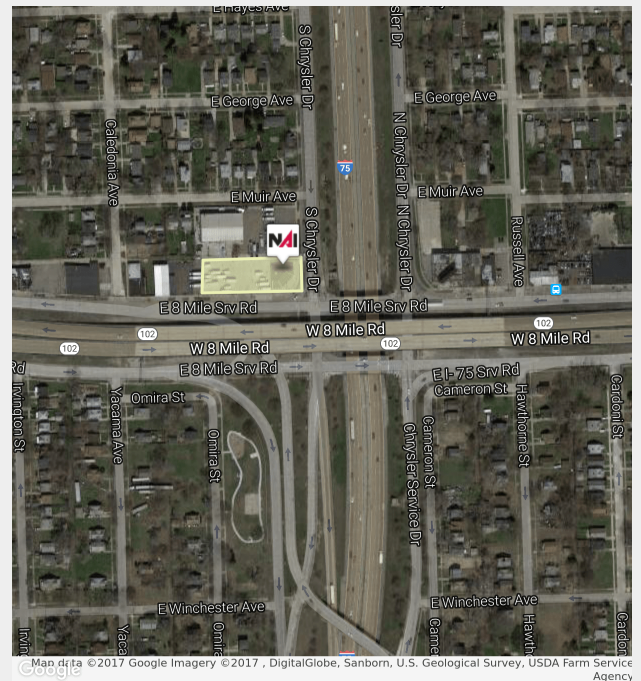


877 E. 8 Mile

Hazel Park, Michigan 48030

Property Features

- 3,445 SF Former Car Dealership with Prime Commercial Exposure
- Redevelopment Opportunity on .47 Acres
- Ample Frontage at Hard Corner (NW corner of I-75 & 8 Mile Road)
- Monument Signage with Visibility from I-75 and 8 Mile Rd
- Extremely High Traffic Counts
- Flexible Building with Drive-In Showroom
- Lease Rate: Contact Broker
- Sale Price: \$750,000



For more information:

Brad Margolis

+1 248 351 4367 | bmargolis@farbman.com

For Sale or Lease: Former Car Dealership



Subject Property

DEMOGRAPHICS

STATS	POPULATION	TOTAL HOUSEHOLDS	AVG. HH INCOME
1 MILE	19,890	7,234	\$36,236
2 MILES	65,220	25,281	\$39,703
3 MILES	137,207	54,517	\$44,626

Figures shown represent estimates

DAILY TRAFFIC COUNTS

ROADS	DAILY TRAFFIC
I-75 & E 8 MILE SERVICE DR	173,618
I-75 & E STATE FAIR AVE	160,615

Figures shown represent estimates



Commercial Real Estate Services, Worldwide.

28400 Northwestern Hwy
Fourth Floor
Southfield, MI 48034

248 353 0500 tel
248 353 0501 fax
naifarbman.com

The information contained herein has been given to us by the owner of the property or other sources we deem reliable. We have no reason to doubt its accuracy, but we do not guarantee it. All information should be verified prior to lease or purchase.