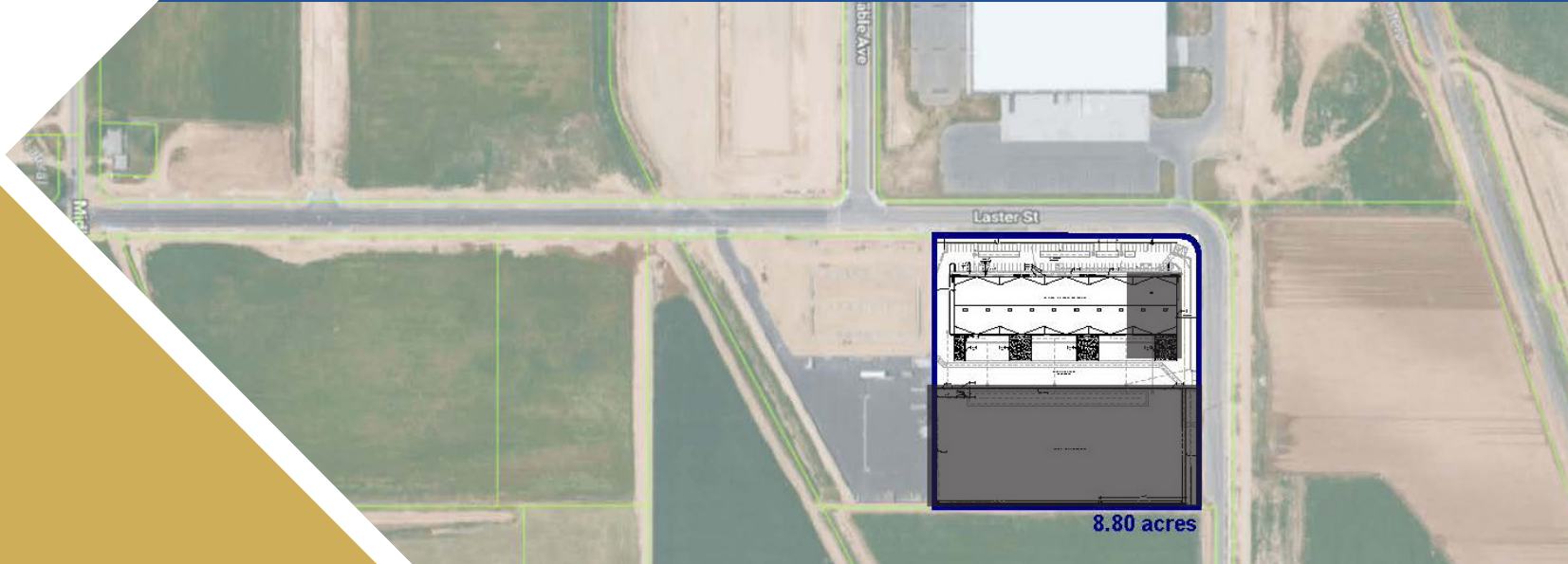




56,540 SF Available Industrial Space AI Midland Industrial Park

9575 LASTER STREET | NAMPA, IDAHO



Property Highlights

- 76,540 Total SF
- 56,540 SF Available For Lease
- Divisible Down to +/- 7,200 SF
- Customizable Tenant Improvements Available
- Easily Accessible to the I-84, just 3 miles to the property and 25 minutes to the Boise Airport.




Contact

Charity Nelson – Director of Leasing
cnelson@adler-industrial.com

adler-industrial.com

 (+1) 208-506-7170

 8665 W. Emerald Street, Suite 200,
Boise, ID 83704, USA



56,540 SF Available Industrial Space

AI Midland Industrial Park

**9575 LASTER ST.
NAMPA, IDAHO**



Building Plan

AVAILABLE FOR LEASE: 56,540 SF

FIRE: Sprinklers and alarms through out

DIVISIBLE TO: +/- 7,200 SF



For rates, please
contact our
Director of Leasing





56,540 SF Available Industrial Space

AI Midland Industrial Park

**9575 LASTER ST.
NAMPA, IDAHO**

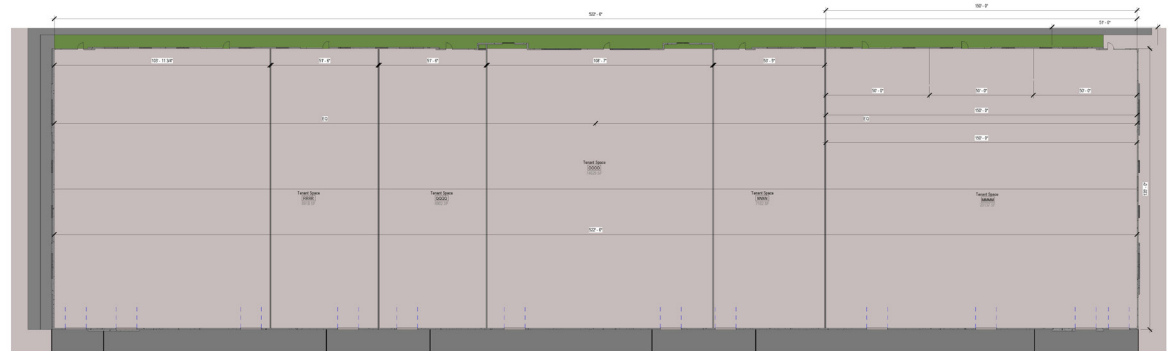


Building Plan

AVAILABLE FOR LEASE: 56,540 SF

FIRE: Sprinklers and alarms throughout

DIVISIBLE TO: +/- 7,200 SF





56,540 SF Available Industrial Space

AI Midland Industrial Park

9575 LASTER ST.
NAMPA, IDAHO



Access

Boise Airport	+/- 25 min / 22 miles
I-84 Interstate	+/- 10 min / 3 miles
Downtown Boise	+/- 25 min / 23 miles



ADLER
INDUSTRIAL

Visit adler-industrial.com for more information

90+

**PROPERTIES ACQUIRED OR
DEVELOPED IN BOISE MSA**



The largest industrial real estate
development and management
company in Idaho

Adler Industrial specializes in vertically integrated solutions for Class “A” industrial development, including developing, constructing, leasing, investing, and property management. With over 4 million square feet of acquired or developed buildings and 1,000 acres of land for future projects, we lead the market in providing comprehensive industrial solutions. Our sister company, Adler Realty Investments, founded in 1996, has acquired or developed 5.9 million square feet of properties, across all asset types nationwide.




Contact

Charity Nelson – Director of Leasing
cnelson@adler-industrial.com

adler-industrial.com

 (+1) 208-506-7170

 8665 W. Emerald Street, Suite 200,
Boise, ID 83704, USA