

# 38-10 29<sup>th</sup> Street Long Island City, N.Y.

## (TWO) INDUSTRIAL SPACES FOR LEASE

CAN BE LEASED TOGETHER OR SEPARATE

**4,500 SF GROUND FLOOR**

**5,000 SF 2<sup>ND</sup> FLOOR**



**FREIGHT**

**DRIVE IN**

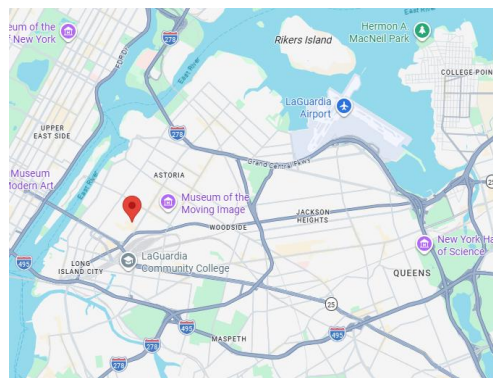
***Ideal for Light Manufacturing , Studio/Artist, E-Commerce, Storage***

### **Location:**

Easy access to Northern Boulevard, 59<sup>th</sup> Street Bridge, LIE, BQE, GCP

### **Transportation:**

M, R, N, W, E, F & #7 Subway Lines  
Q32, Q39, !60, Q66, Q69, Q100, Q101,  
Q102, & B62 Bus Lines



For Information and Inspection Call

**JASON AUFFARTH**

718-371-0132

[Jauffarthy@s-z.com](mailto:Jauffarthy@s-z.com)

**Sholom &  
Zuckerbrot Realty LLC**  
*Established 1962*

For Information and Inspection Call

**MELISSA GRASSO**

917-651-6241 - Cell

[mgrasso@s-z.com](mailto:mgrasso@s-z.com)

3333 New Hyde Park Rd, Suite 307, New Hyde Park, NY 11042 (718) 392-5959

Although all information is from sources deemed reliable, and no representation is made as to the accuracy thereof, it is submitted subject to errors, omissions, changes of price, prior sale, or withdrawal without notice

# 38-10 29<sup>th</sup> Street Long Island City, N.Y.

## GROUND FLOOR

**4,500 S.F.**

### **FEATURES:**

Direct Access  
Ceiling Height 12'  
1 Drive in 11'  
Heavy Floor Load  
Column Free  
Natural Light  
Heat/Air Conditioner



For Information and Inspection  
**MELISSA GRASSO**  
917-651-6241 - Cell  
mgrasso@s-z.com

 **Sholom &  
Zuckerbrot** Realty LLC  
Established 1962

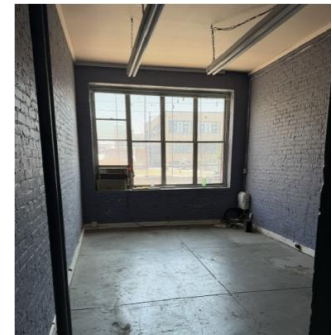
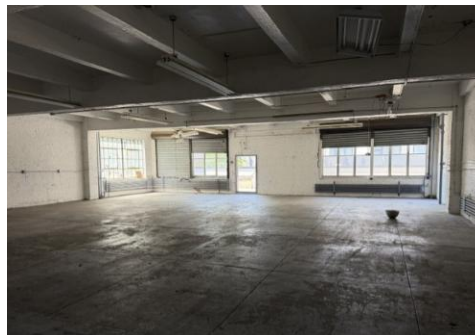
For Information and Inspection Call  
**JASON AUFFARTH**  
718-371-0132  
Jauffarth@s-z.com

## SECOND FLOOR

**5,000 S.F.**

### **FEATURES:**

Column Free  
Ceiling Height 12'  
Private Restroom  
Heat/Air Condition  
Heavy Floor Load  
Direct Access w/Freight Elevator  
Large Windows for Natural Light



3333 New Hyde Park Rd, Suite 307, New Hyde Park, NY 11042 (718) 392-5959

Although all information is from sources deemed reliable, and no representation is made as to the accuracy thereof, it is submitted subject to errors, omissions, changes of price, prior sale, or withdrawal without notice