



LIQUOR STORE BUILDING & BUSINESS

12205 Shawnee Mission Parkway, Shawnee, Kansas



SALE PRICE: \$925,000 | LEASE RATE: \$14/SF NNN

DEMOGRAPHICS

	1 mile	3 miles	5 miles
Estimated Population	10,971	77,818	190,172
Avg. Household Income	\$110,836	\$113,346	\$111,908

- 4,697 SF building
- Excellent opportunity to own a Business and Real Estate
- Upstairs retail condo - Only maintain what you use
- Sales numbers available upon request
- Highly visible location on Shawnee Mission Parkway
- Meticulously maintained Liquor Store
- Recent appraisal done in October of 2023

 [CLICK HERE TO VIEW MORE LISTING INFORMATION](#)

For More Information Contact:

DANIEL BROCATO | 816.412.7303 | dbrocato@blockandco.com

Exclusive Agent





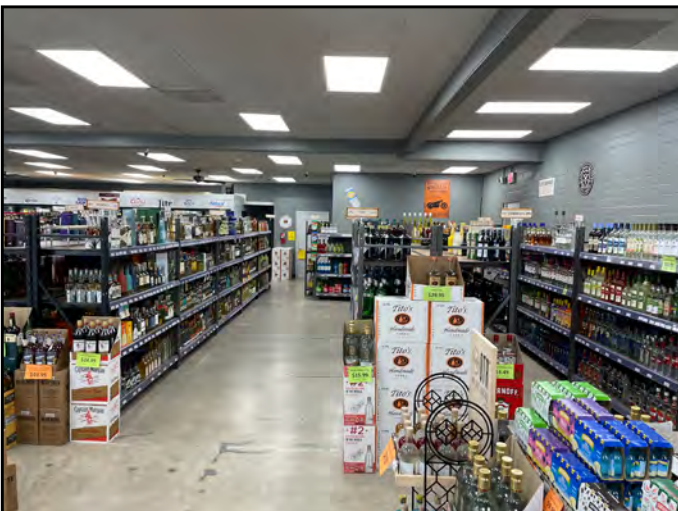
LIQUOR STORE BUILDING & BUSINESS

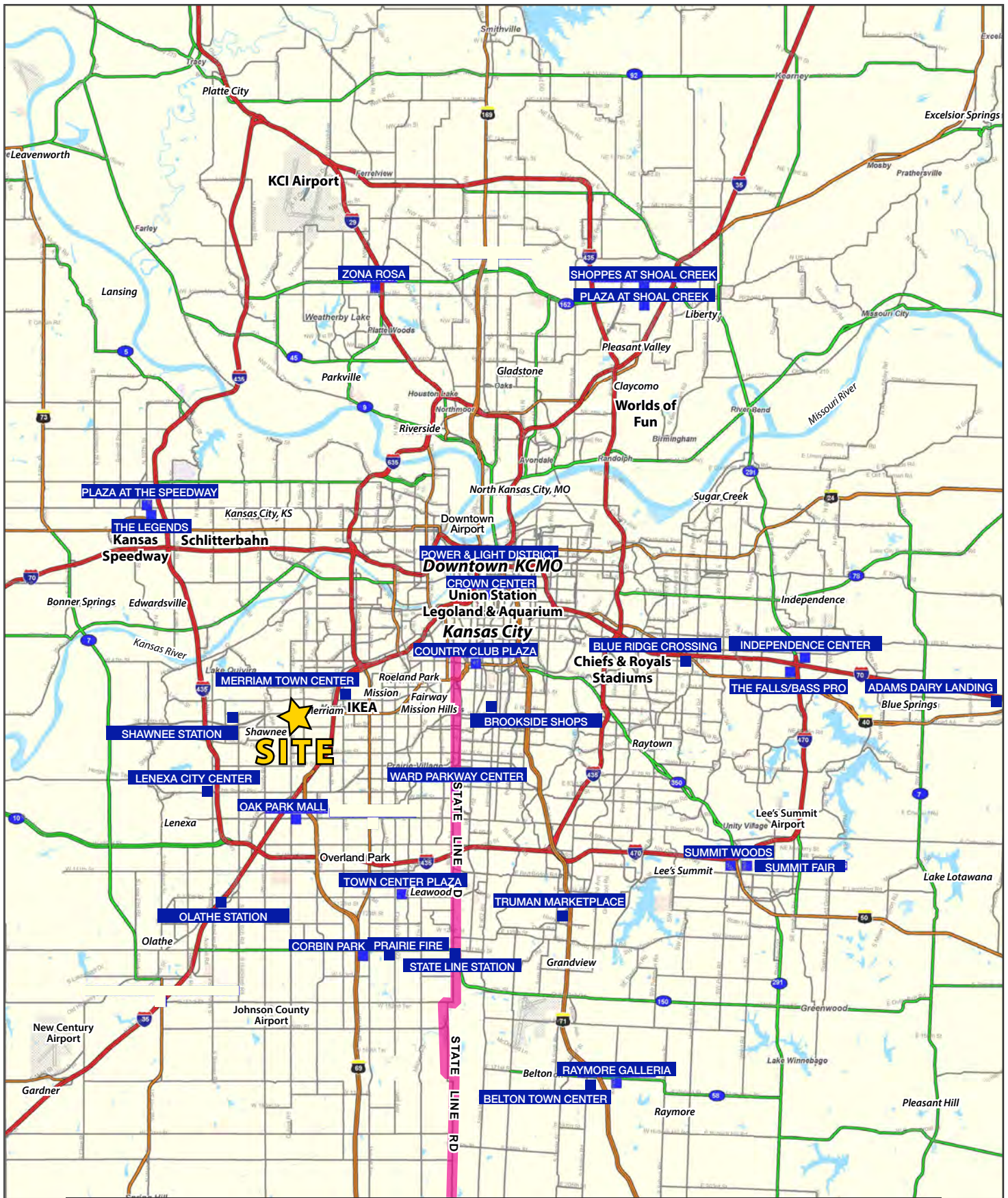
12205 Shawnee Mission Parkway, Shawnee, Kansas

AERIAL



PHOTOS

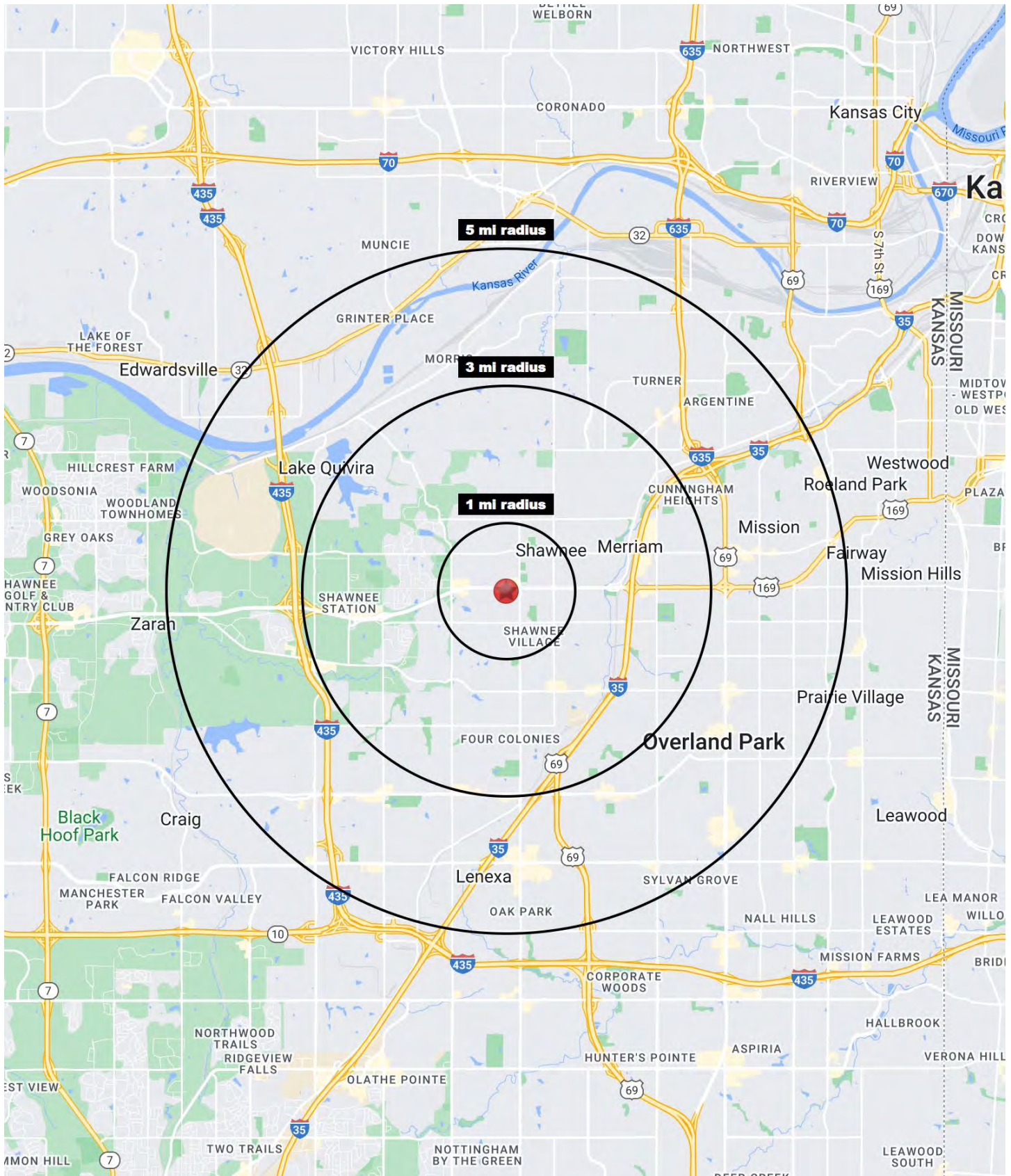






LIQUOR STORE BUILDING & BUSINESS

12205 Shawnee Mission Parkway, Shawnee, Kansas





LIQUOR STORE BUILDING & BUSINESS

12205 Shawnee Mission Parkway, Shawnee, Kansas

12205 Shawnee Mission Parkway Shawnee, KS 66216	1 mi radius	3 mi radius	5 mi radius
Population			
2024 Estimated Population	10,971	77,818	190,172
2029 Projected Population	11,516	79,130	192,056
2020 Census Population	10,778	76,556	187,519
2010 Census Population	10,550	74,606	180,496
Projected Annual Growth 2024 to 2029	1.0%	0.3%	0.2%
Historical Annual Growth 2010 to 2024	0.3%	0.3%	0.4%
2024 Median Age	39.9	38.9	37.8
Households			
2024 Estimated Households	4,667	33,896	84,752
2029 Projected Households	5,000	34,866	86,509
2020 Census Households	4,533	32,535	81,494
2010 Census Households	4,426	31,152	77,171
Projected Annual Growth 2024 to 2029	1.4%	0.6%	0.4%
Historical Annual Growth 2010 to 2024	0.4%	0.6%	0.7%
Race and Ethnicity			
2024 Estimated White	79.1%	77.2%	76.8%
2024 Estimated Black or African American	6.6%	7.6%	7.5%
2024 Estimated Asian or Pacific Islander	3.0%	3.4%	3.4%
2024 Estimated American Indian or Native Alaskan	0.4%	0.4%	0.4%
2024 Estimated Other Races	10.8%	11.4%	11.8%
2024 Estimated Hispanic	11.0%	11.9%	12.7%
Income			
2024 Estimated Average Household Income	\$110,836	\$113,346	\$111,908
2024 Estimated Median Household Income	\$88,307	\$89,588	\$89,266
2024 Estimated Per Capita Income	\$47,544	\$49,487	\$49,966
Education (Age 25+)			
2024 Estimated Elementary (Grade Level 0 to 8)	1.2%	2.3%	2.1%
2024 Estimated Some High School (Grade Level 9 to 11)	3.4%	2.9%	2.7%
2024 Estimated High School Graduate	21.8%	18.9%	18.9%
2024 Estimated Some College	18.5%	19.7%	19.7%
2024 Estimated Associates Degree Only	13.1%	9.2%	8.7%
2024 Estimated Bachelors Degree Only	28.6%	30.1%	30.7%
2024 Estimated Graduate Degree	13.4%	16.9%	17.2%
Business			
2024 Estimated Total Businesses	508	2,610	6,987
2024 Estimated Total Employees	5,041	31,644	94,162
2024 Estimated Employee Population per Business	9.9	12.1	13.5
2024 Estimated Residential Population per Business	21.6	29.8	27.2

©2024, Sites USA, Chandler, Arizona, 480-491-1112 Demographic Source: Applied Geographic Solutions 5/2024, TIGER Geography - RS1

