

±0.24 Acres of Level Land in California City

Site: ±0.24 Acres



Sale Price

\$23,000

OFFERING SUMMARY

Available SF:	10,578 SF
Lot Size:	0.24 Acres
Price / SF:	\$2.17
Zoning:	RM1: High Density Residential
Market:	Indian Wells Valley
Submarket:	Central California City
Cross Streets:	Heather Ave & Jimson Ave
APN:	299-222-25-00-9

PROPERTY HIGHLIGHTS

- ±0.24 Acres of Level Land | Secure Location
- 71' Wide By 155' Deep (±10,578 SF) | Easy Access
- Seller Carry Financing Available w/ 10% Down!
- Private Setting Minutes Away From Central Park
- Paved Road Frontage Access from North & West
- Quick Access from Nueralia Rd & California City Blvd
- North and South Bound Freeways Nearby
- Close Proximity to California City Airport

Jared Ennis

CalDRE #01945284

Executive Vice President

jared@centralcacommercial.com

559.705.1000

Kevin Land

CalDRE #01516541

Executive Managing Director

kevin@centralcacommercial.com

559.705.1000

Central CA Commercial

Investments | Industrial | Office

Multifamily | Retail | Land | Specialty

CentralCaCommercial.com

We obtained the information above from sources we believe to be reliable. However, we have not verified its accuracy and make no guarantee, warranty or representation about it. It is submitted subject to the possibility of errors, omissions, change of price, rental or other conditions, prior sale, lease or financing, or withdrawal without notice. We include projections, opinions, assumptions or estimates for example only, and they may not represent current or future performance of the property. You and your tax and legal advisors should conduct your own investigation of the property and transaction.

±0.24 Acres of Level Land in California City

PROPERTY DESCRIPTION

Stunning ±0.24 acre (±10,578 SF) infill lot located in central California City near many existing businesses & developments and is within a short walking distance to the school. Brand-new ballpark within walking distance with a renovated basketball court and playground. Nearby developments are upscale with a newer 2008 construction home to the north and a 2005 construction home on a similar-sized lot to the east. This property features paved road frontage from the north, the electric pole is on the south rear edge of the property, adjacent property has natural gas, peaceful walking path within the neighborhood, & the water is at the street. Easy access from California City Blvd within 8 miles of Highway 14. Just minutes to Mojave, 28 miles to Tehachapi, 30 miles to Golden Hills, & 40 miles to Lancaster. Seller will carry loan at reasonable terms with only 10% down!

LOCATION DESCRIPTION

The property is located north of Heather Ave, east of Yerba Blvd, south of Jimson Ave and west of Isabella Blvd. With easy access to California City Blvd, it offers beautiful views as well as a secure and private location. California City is a city located in northern Antelope Valley in Kern County, California, United States. It is 100 miles north of the city of Los Angeles, and the population was 14,973 at the 2020 census. Covering 203.63 square miles, California City has the third-largest land area of any city in the state of California, and is the largest city by land area in California that is not a county seat.



Jared Ennis

CalDRE #01945284

Executive Vice President

jared@centralcacommercial.com

559.705.1000

Kevin Land

CalDRE #01516541

Executive Managing Director

kevin@centralcacommercial.com

559.705.1000

Central CA Commercial

Investments | Industrial | Office

Multifamily | Retail | Land | Specialty

CentralCaCommercial.com

We obtained the information above from sources we believe to be reliable. However, we have not verified its accuracy and make no guarantee, warranty or representation about it. It is submitted subject to the possibility of errors, omissions, change of price, rental or other conditions, prior sale, lease or financing, or withdrawal without notice. We include projections, opinions, assumptions or estimates for example only, and they may not represent current or future performance of the property. You and your tax and legal advisors should conduct your own investigation of the property and transaction.



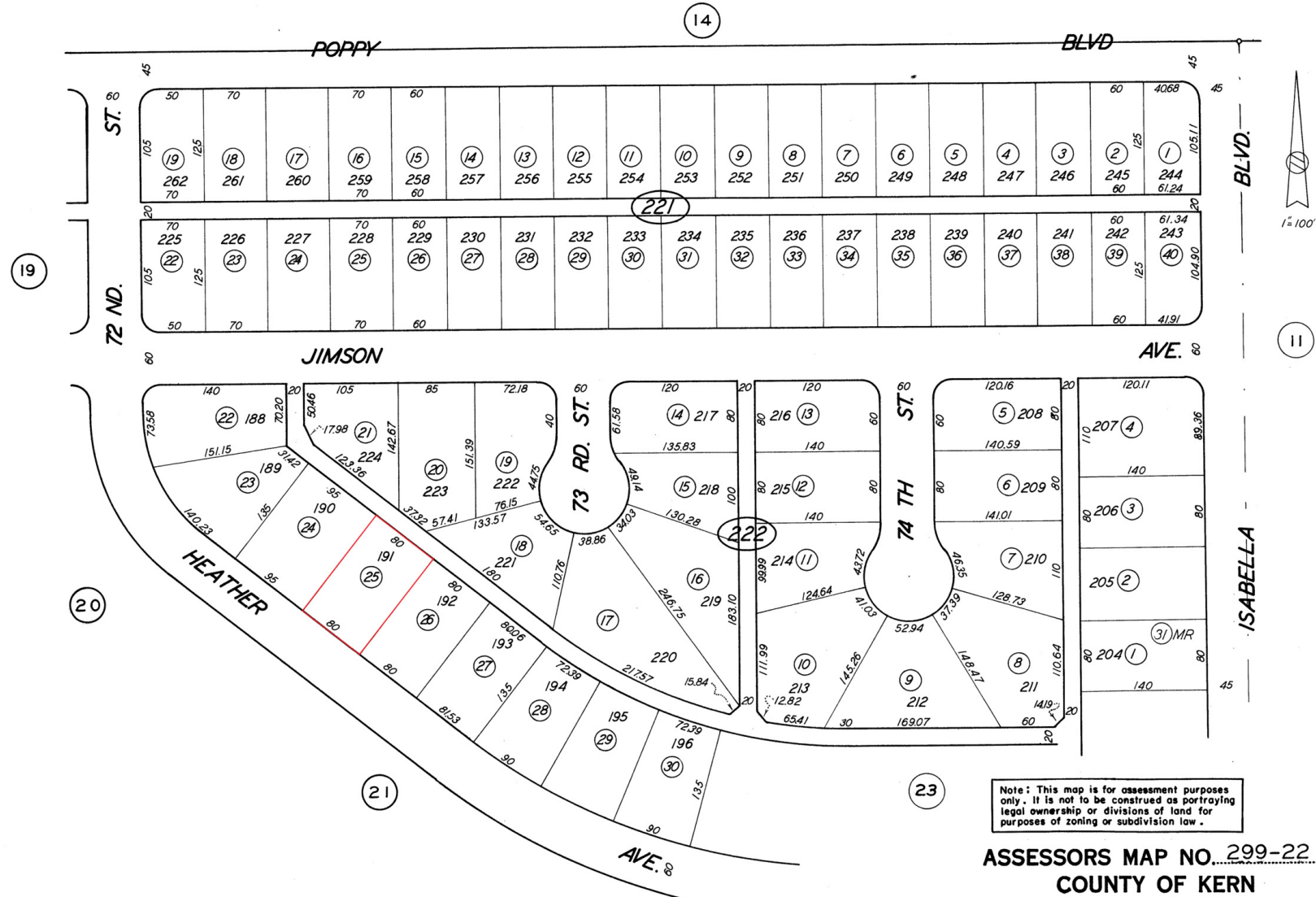
±0.24 Acres of Level Land in California City

299-22

TRACT 2779

SCHOOL DIST. 11-19

299-22



Jared Ennis

CalDRE #01945284

Executive Vice President

jared@centralcacommercial.com

559.705.1000

Kevin Land

CalDRE #01516541

Executive Managing Director

kevin@centralcacommercial.com

559.705.1000

Central CA Commercial

Investments | Industrial | Office

Multifamily | Retail | Land | Specialty

CentralCaCommercial.com

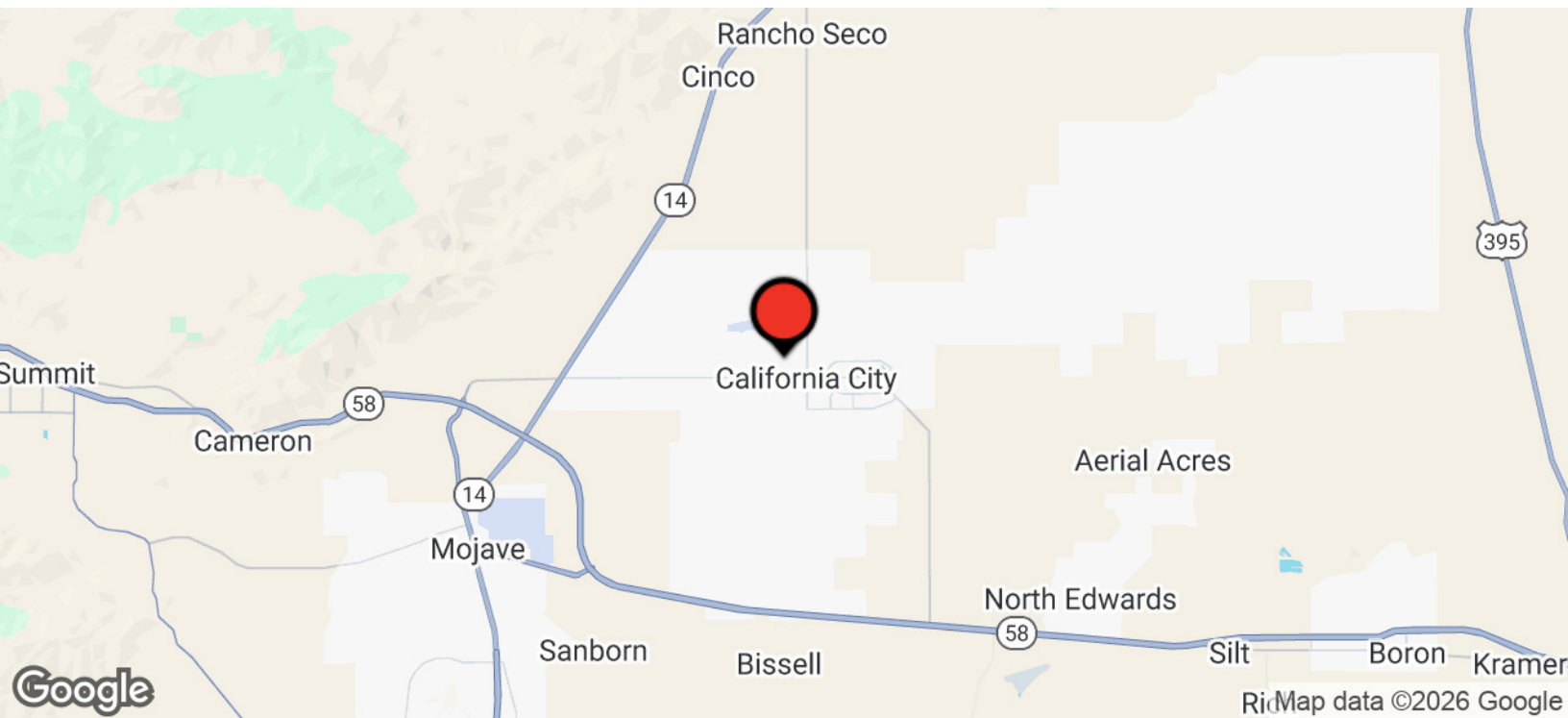
We obtained the information above from sources we believe to be reliable. However, we have not verified its accuracy and make no guarantee, warranty or representation about it. It is submitted subject to the possibility of errors, omissions, change of price, rental or other conditions, prior sale, lease or financing, or withdrawal without notice. We include projections, opinions, assumptions or estimates for example only, and they may not represent current or future performance of the property. You and your tax and legal advisors should conduct your own investigation of the property and transaction.

Land For Sale | 7249 Heather Avenue California City, CA 93505



**CENTRAL CA
COMMERCIAL**

±0.24 Acres of Level Land in California City



Jared Ennis

CalDRE #01945284

Executive Vice President

jared@centralcacommercial.com

559.705.1000

Kevin Land

CalDRE #01516541

Executive Managing Director

kevin@centralcacommercial.com

559.705.1000

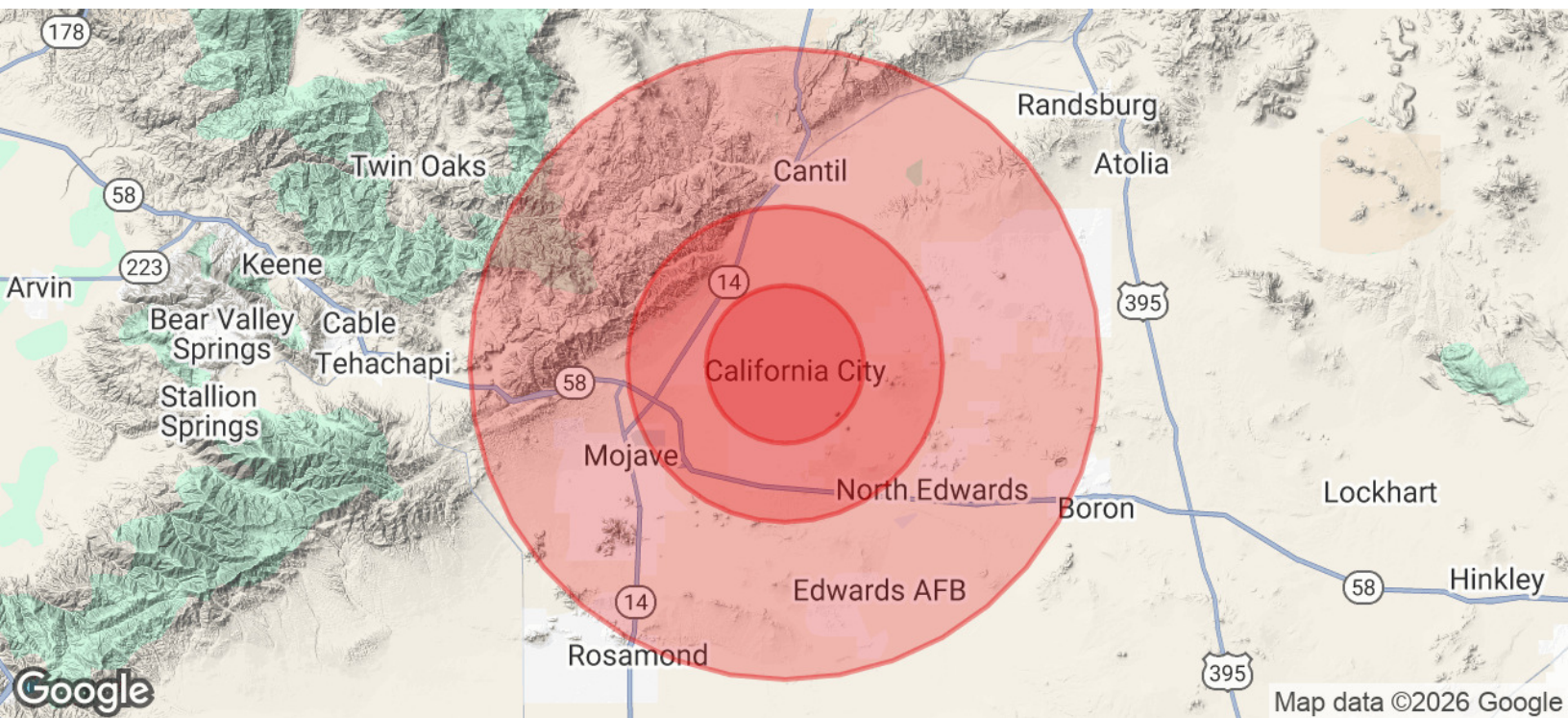
Central CA Commercial

Investments | Industrial | Office

Multifamily | Retail | Land | Specialty

CentralCaCommercial.com

We obtained the information above from sources we believe to be reliable. However, we have not verified its accuracy and make no guarantee, warranty or representation about it. It is submitted subject to the possibility of errors, omissions, change of price, rental or other conditions, prior sale, lease or financing, or withdrawal without notice. We include projections, opinions, assumptions or estimates for example only, and they may not represent current or future performance of the property. You and your tax and legal advisors should conduct your own investigation of the property and transaction.

**±0.24 Acres of Level Land in California City**

POPULATION	5 MILES	10 MILES	20 MILES
Total Population	13,031	15,105	38,932
Average Age	37	37	36
Average Age (Male)	37	37	36
Average Age (Female)	38	40	37

HOUSEHOLDS & INCOME	5 MILES	10 MILES	20 MILES
Total Households	4,675	4,912	13,082
# of Persons per HH	2.8	3.1	3
Average HH Income	\$77,090	\$72,684	\$80,534
Average House Value	\$256,543	\$249,065	\$268,052

ETHNICITY (%)	5 MILES	10 MILES	20 MILES
Hispanic	36.7%	39.2%	42.1%

Jared Ennis
 CalDRE #01945284
 Executive Vice President
 jared@centralcacommercial.com
 559.705.1000

Kevin Land
 CalDRE #01516541
 Executive Managing Director
 kevin@centralcacommercial.com
 559.705.1000

Central CA Commercial
 Investments | Industrial | Office
 Multifamily | Retail | Land | Specialty
CentralCaCommercial.com

We obtained the information above from sources we believe to be reliable. However, we have not verified its accuracy and make no guarantee, warranty or representation about it. It is submitted subject to the possibility of errors, omissions, change of price, rental or other conditions, prior sale, lease or financing, or withdrawal without notice. We include projections, opinions, assumptions or estimates for example only, and they may not represent current or future performance of the property. You and your tax and legal advisors should conduct your own investigation of the property and transaction.