



19267 HIGHWAY 30



170' of Hwy 30 frontage in growing Grimes County - this 1.65-acre tract offers prime visibility between Huntsville and Bryan-College Station. Located in unincorporated Shiro with no restrictions, this property offers endless potential for multiple uses. Near proposed I-14 corridor and high-speed rail alignment. Annual Average Daily traffic count of 6,054 offers immediate exposure for signage, vending, or business use. Utilities nearby. Rare opportunity to own land along a major artery with growth potential.



Markham Realty
Selling Quality Texas Properties Since 1970
contact@markhamrealty.com
936-295-5989 | markhamrealty.com



Scan here for additional
information & photos.

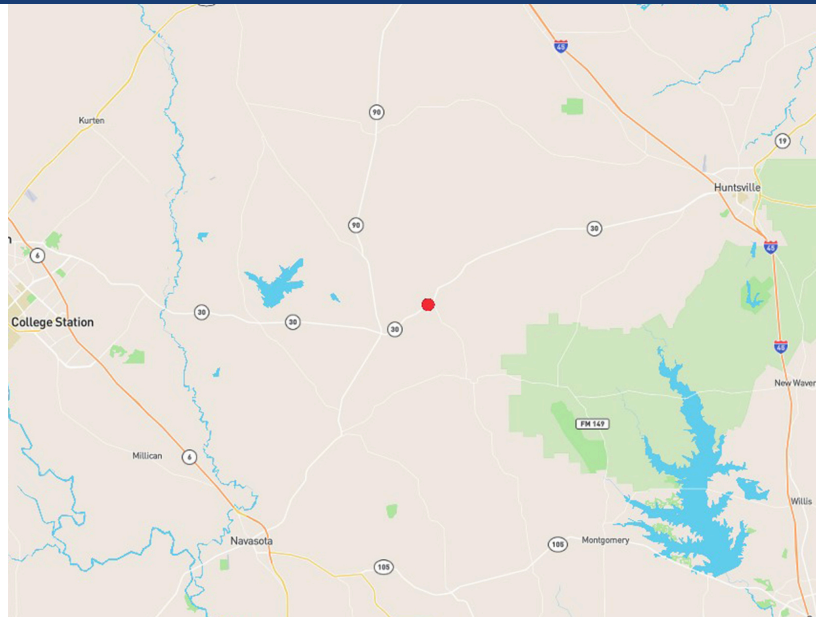
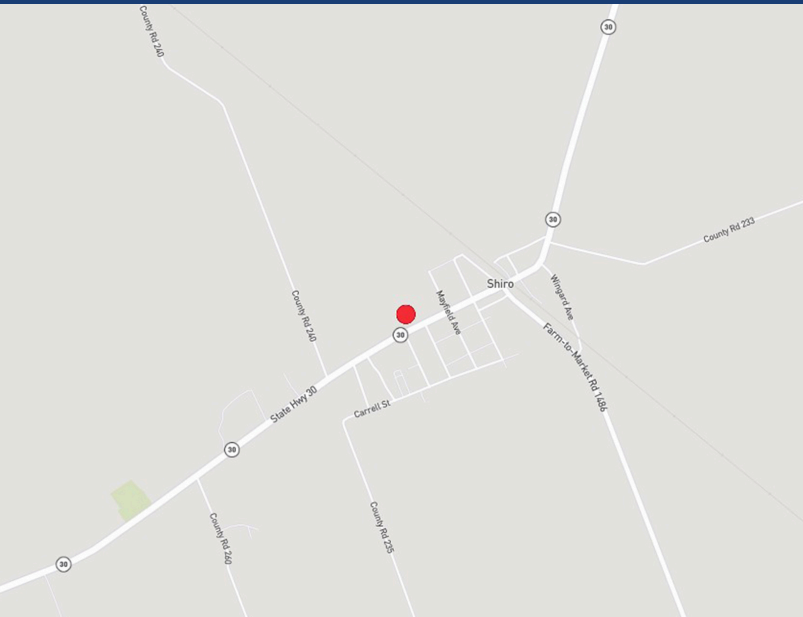


Information furnished is from sources deemed reliable, but is not guaranteed by Markham Realty, Inc. The offerings are subject to change in price, errors, omissions, prior sales, or withdrawal without notice. Square footage, acreage size and lot dimensions are approximate. All persons and firms named in this brochure are licensed brokers or salespersons. Markham Realty, Inc. will co-broker with any licensed Broker if Broker and/or agent accompanies his or her prospective buyer from the first (1st) showing forward.

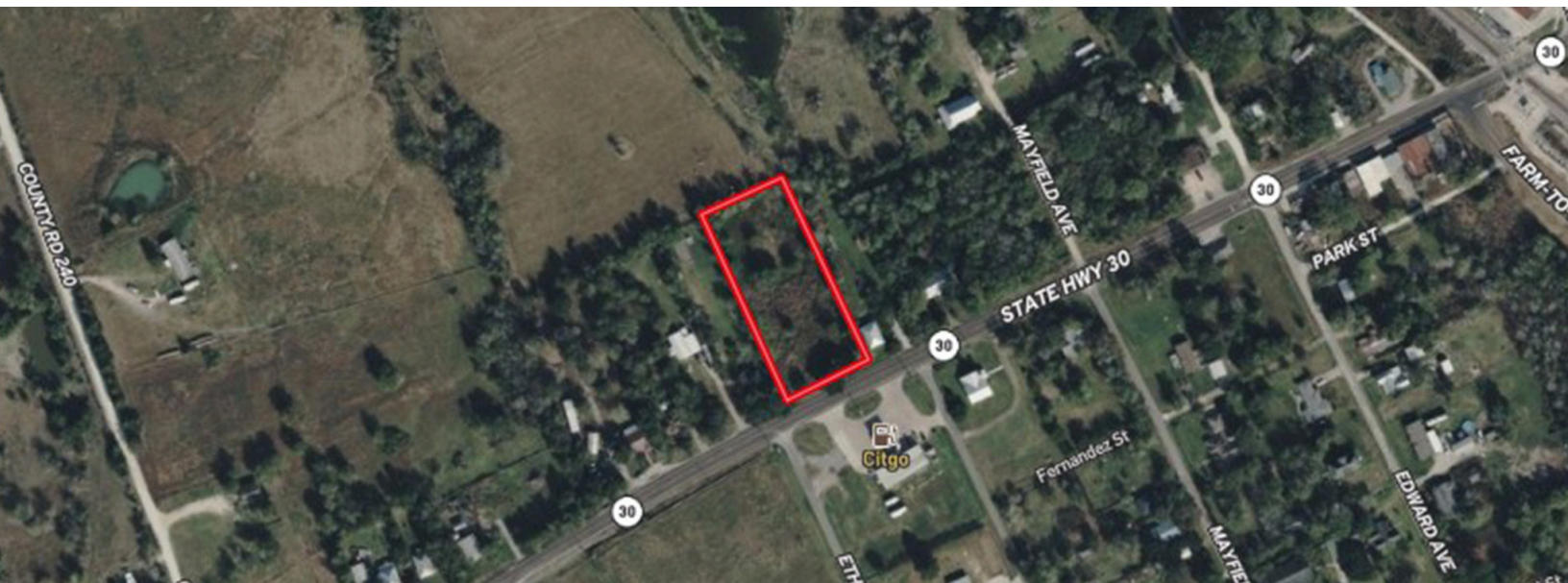
19267 HIGHWAY 30

SHIRO, TEXAS

Markham *Realty*



Directions: From Hwy 6 in College Station - Eastbound on Hwy 30 for 29 miles, property on left. From I-45 in Huntsville - Westbound on Hwy 30 for 23 miles, property on right.



Markham *Realty*

Markham Realty
Selling Quality Texas Properties Since 1970
contact@markhamrealty.com
936-295-5989 | markhamrealty.com



Scan here for additional
information & photos.



Information furnished is from sources deemed reliable, but is not guaranteed by Markham Realty, Inc. The offerings are subject to change in price, errors, omissions, prior sales, or withdrawal without notice. Square footage, acreage size and lot dimensions are approximate. All persons and firms named in this brochure are licensed brokers or salespersons. Markham Realty, Inc. will co-broker with any licensed Broker if Broker and/or agent accompanies his or her prospective buyer from the first (1st) showing forward.