

4855

N. CORTONA WAY

MERIDIAN, ID 83646

Cortona Way Retail/
Office Buildings For Sale
or Lease

1,365 to 8,834 SF Available



AVAILABILITY

SALE PRICE: \$585/PSF

LEASE RATE: \$45.00/SF

AVAILABLE: Bldg. 1: **7,465 SF**
Bldg. 2: **8,834 SF**

LEASE TYPE: NNN

T.I ALLOWANCE: \$30.00/SF

LOT SIZE: 1.94 Acres

ZONING: C-G (General Commercial)

PARCEL #: R9010680121 & R9010680131

CONSTRUCTION: Anticipated Summer 2025, Delivery Q1 2026

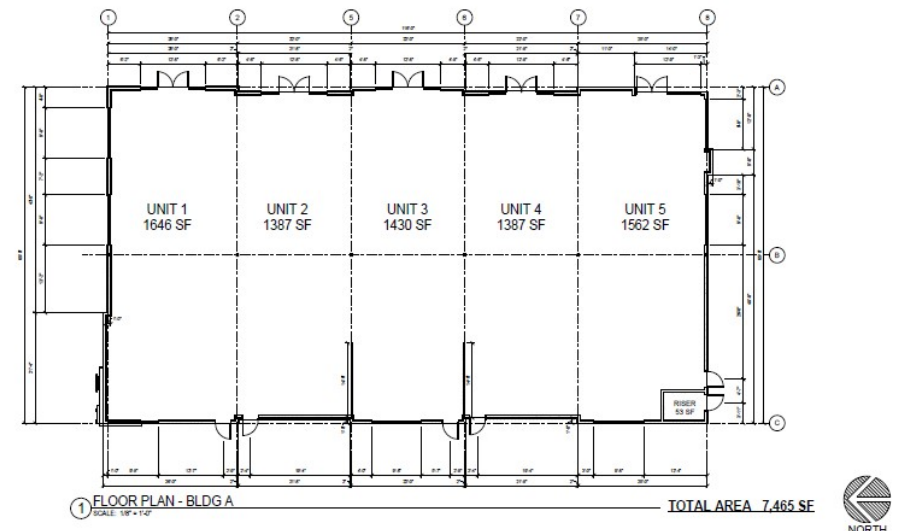
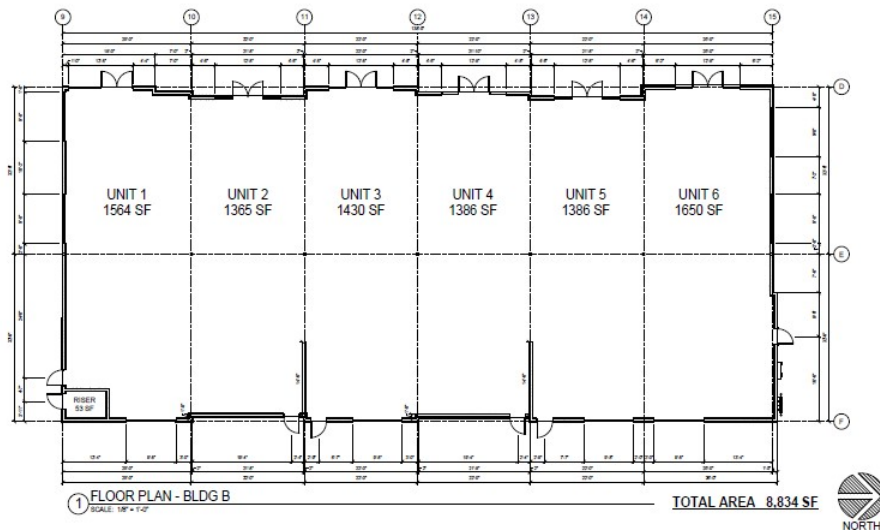
Listing Features

- Newly proposed retail/office buildings just off Cortona Way
- Ideal spot for retail, dining, and service businesses
- Strategically positioned at the signalized intersection of Ten Mile & McMillan Roads, key routes in the Treasure Valley
- Nestled among vibrant new and upcoming residential communities
- High-visibility location near the bustling new Costco and Winco Foods
- Situated right in the heart of a rapidly growing area

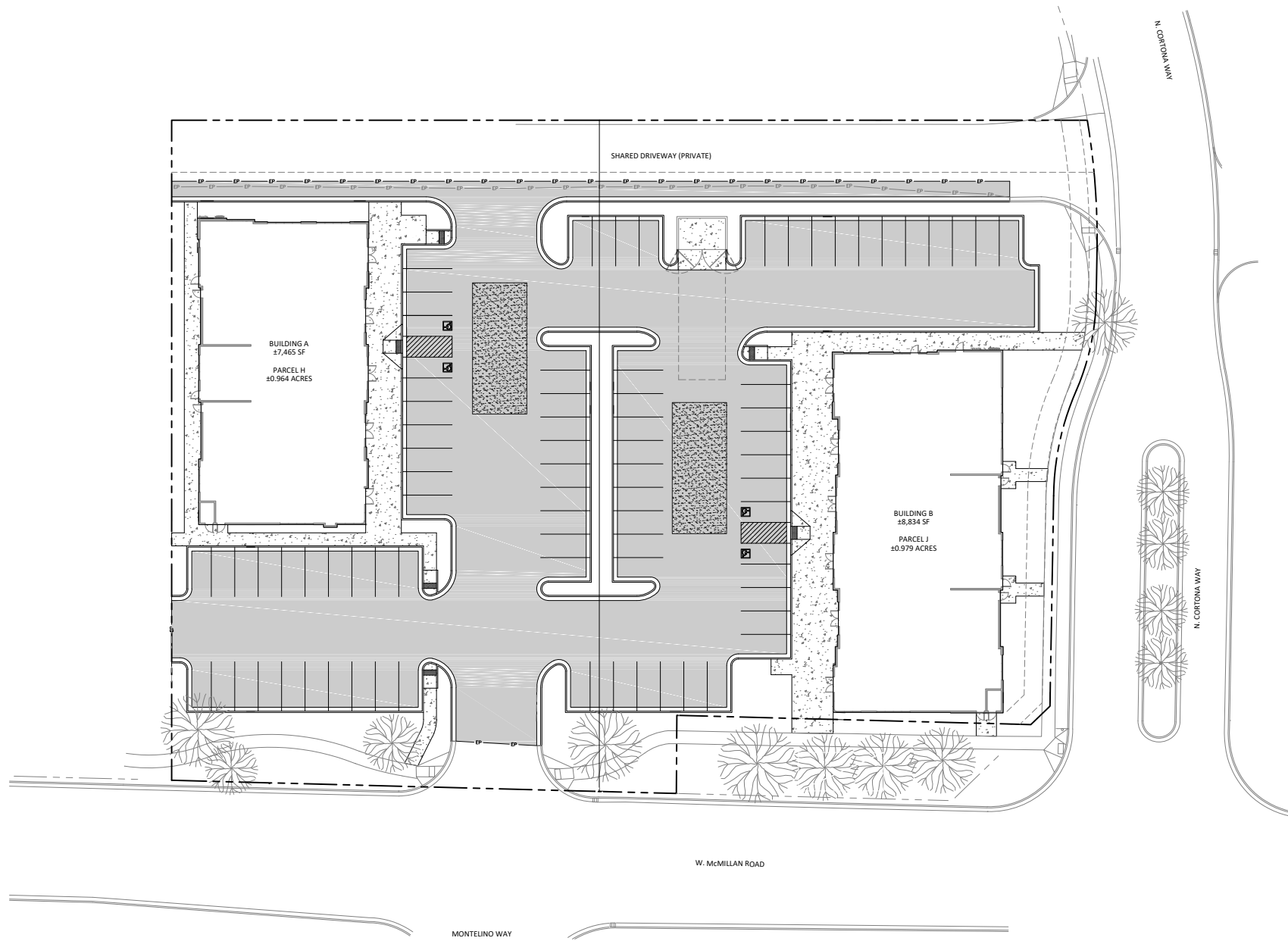
VIEW LOCATION MAP

[Click Here](#)

Floorplans



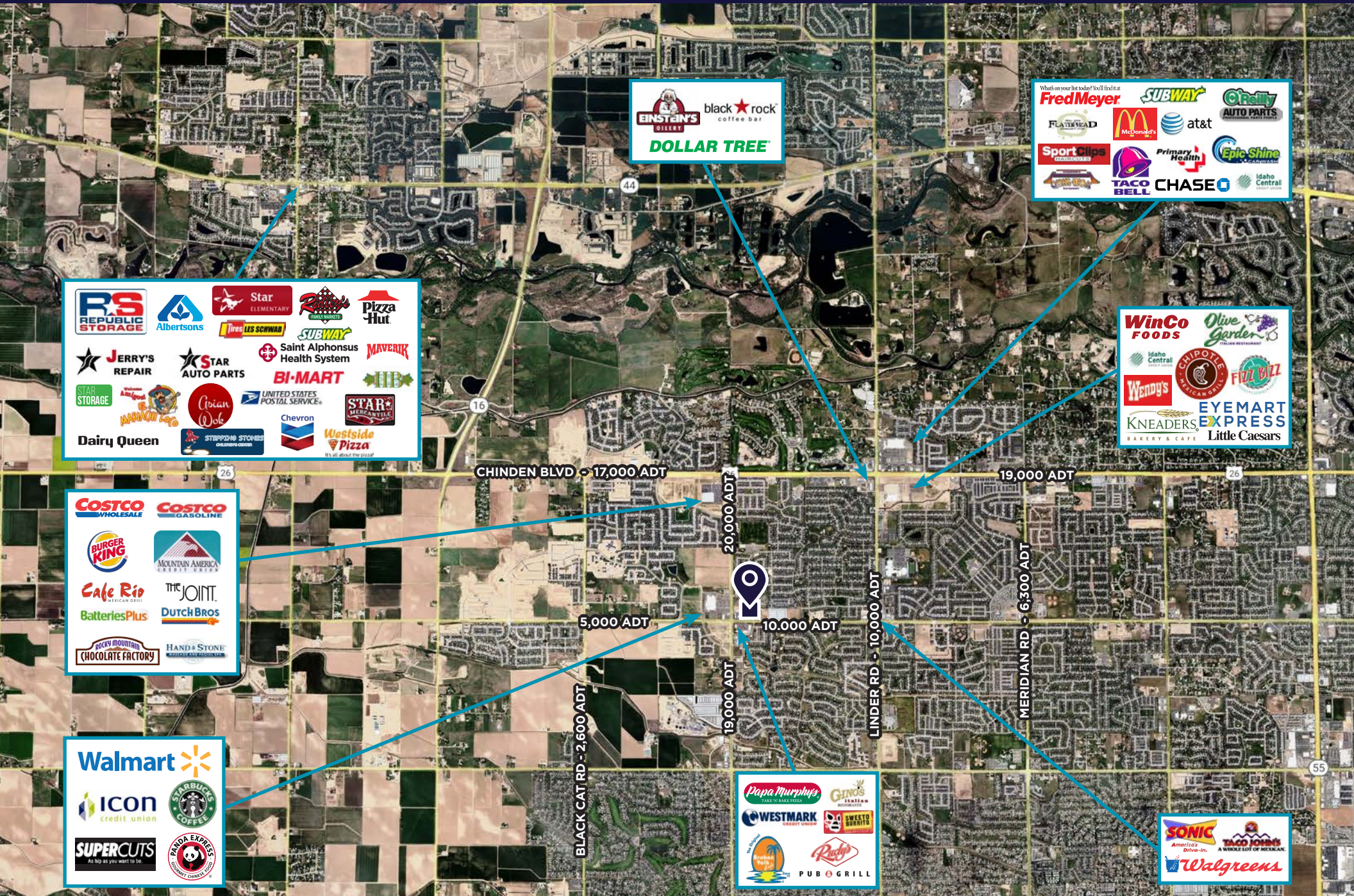
SITE PLAN



AERIAL MAP



PRIME LOCATION



METRO INFORMATION

Welcome to the West's Most Dynamic Metro, Boise, Idaho

A place racking up recognition for its growth, business opportunities and that elusive 'quality of life', yet one that still maintains an approachability and freakishly friendly vibe. A place you can make your mark and leave your mark. What makes us tick and makes us a magnet for growth is shared across this site. Join us on the journey.

Why Boise Metro

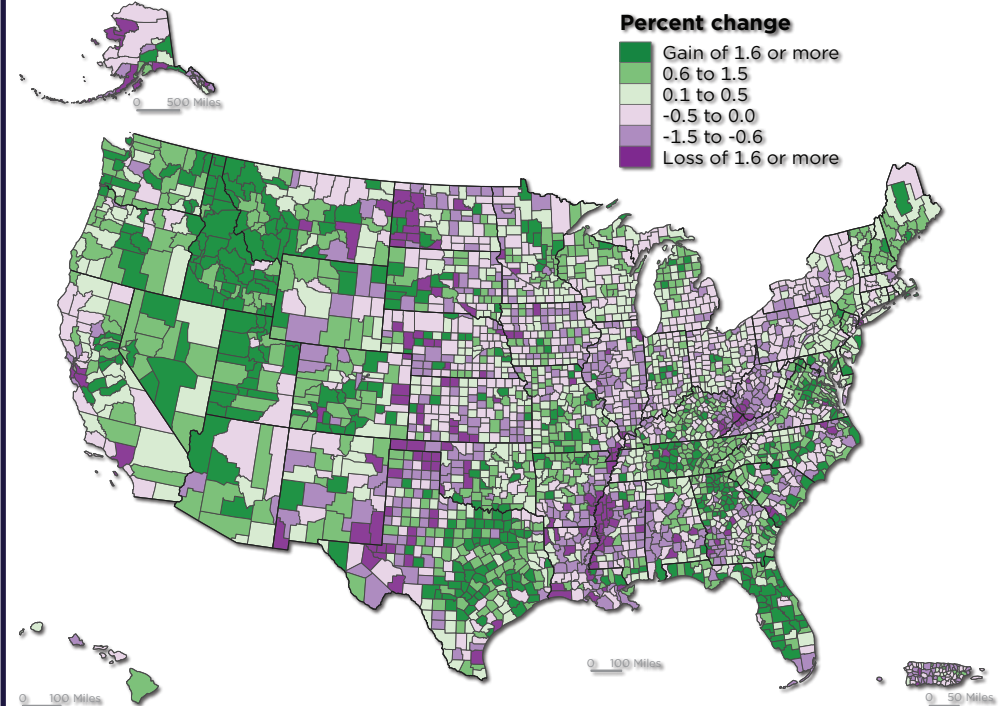
Backed by mountains, blessed with over 200 days of sunny weather, the Boise Metro is earning national acclaim like no other mid-sized city in America. Our incredible quality of life has attracted a thriving mix of high tech, agribusiness and manufacturing businesses along with a young, educated workforce to support them.



Click here to download the complete Boise Valley Regional Overview:
<https://bvvp.org/regional-overview/>

Where Counties are Growing

Percent Change in Population by County: 2020 to 2021



Percent change

- Gain of 1.6 or more
- 0.6 to 1.5
- 0.1 to 0.5
- 0.5 to 0.0
- 1.5 to -0.6
- Loss of 1.6 or more

United States™
Census
Bureau

U.S. Department of Commerce
Economics and Statistics Administration
U.S. CENSUS BUREAU
census.gov

SOURCE: VINTAGE 2018 POPULATION ESTIMATES
[WWW.CENSUS.GOV/PROGRAMS-SURVEYS/POPEST.HTML](https://www.census.gov/programs-surveys/POPEST.html)

About Meridian, Idaho

Idaho's fastest growing city since 1994, Meridian is Idaho's epicenter of progress and prosperity. Named America's best city to live in by USA Today, the Boise Metro's central city has proven to hold a little something for everyone. With the continued evolution of mixed-use commercial space like the Village at Meridian and Ten Mile Crossing, and suburban development happening throughout the area at lightning speed, Meridian offers a cultural cohesion of strong historical roots and emerging potential.

Home to some of the region's top employers and emerging companies, Meridian is a place where companies and people feel good putting down roots. Families, young professionals and retirees alike can all find affordable housing, accessible entertainment and enjoyable amenities in Meridian.

Learn More By Clicking Here:



4855

N. CORTONA WAY

CONTACT

Jennifer McEntee

Senior Director

Office | Capital Markets

+1 208 287 9495

jennifer.mcentee@cushwake.com

Bree Wells

Director

Office | Capital Markets

+1 208 287 9492

bree.wells@cushwake.com

Braydon Torres

Associate

Office | Capital Markets

+1 208 207 9485

braydon.torres@cushwake.com

©2025 Cushman & Wakefield. All rights reserved. The information contained in this communication is strictly confidential. This information has been obtained from sources believed to be reliable but has not been verified. NO WARRANTY OR REPRESENTATION, EXPRESS OR IMPLIED, IS MADE AS TO THE CONDITION OF THE PROPERTY (OR PROPERTIES) REFERENCED HEREIN OR AS TO THE ACCURACY OR COMPLETENESS OF THE INFORMATION CONTAINED HEREIN, AND SAME IS SUBMITTED SUBJECT TO ERRORS, OMISSIONS, CHANGE OF PRICE, RENTAL OR OTHER CONDITIONS, WITHDRAWAL WITHOUT NOTICE, AND TO ANY SPECIAL LISTING CONDITIONS IMPOSED BY THE PROPERTY OWNER(S). ANY PROJECTIONS, OPINIONS OR ESTIMATES ARE SUBJECT TO UNCERTAINTY AND DO NOT SIGNIFY CURRENT OR FUTURE PROPERTY PERFORMANCE.

