



Office For Lease

Corbin Chapman

Associate Vice President
+1 952 374 5811
corbin.chapman@colliers.com

Collin Barr Jr.

Associate
+1 952 897 7747
collin.barr@colliers.com

1600 Utica Avenue South, Suite 300
St. Louis Park, MN 55416
P: +1 952 897 7700
colliers.com

3445 Washington Dr Eagan, MN

Office Space for Lease

- Prime location for professional image
- Flexible on lease terms
- Economical rates
- Ample surface parking available
- Easy access to I-35E / I-494
- Close proximity to area retail and restaurants: ALDI, Hy-Vee, Total Wine, Eagan Town Centre

Copyright © 2024 Colliers International. Information herein has been obtained from sources deemed reliable, however its accuracy cannot be guaranteed. The user is required to conduct their own due diligence and verification.

For Lease

Property Information

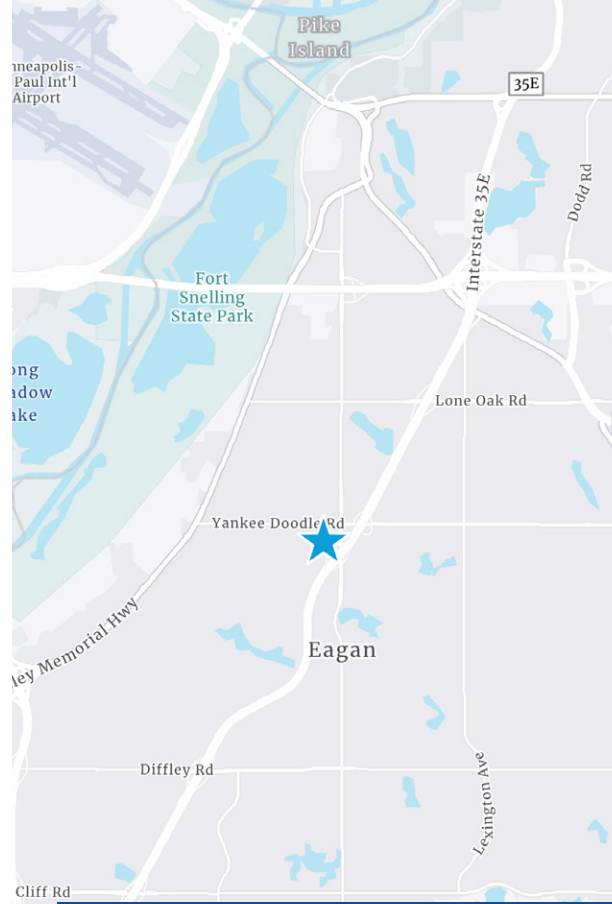
Address: 3445 Washington Drive
Eagan, MN

Currently Available: 138 SF – 1,320 SF

Year Built: 1981

Rental Rates: \$22.00 PSF Gross

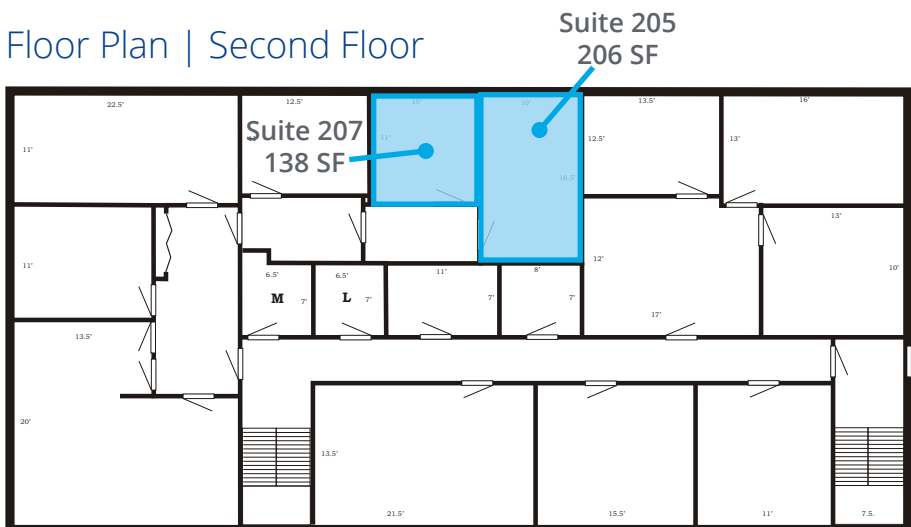
- Available Suites:
- Suite 100: 1,320 SF
 - Suite 106: 500 SF
 - Suite 205: 206 SF
 - Suite 207: 138 SF



Floor Plan | First Floor



Floor Plan | Second Floor



Contact us:

Corbin Chapman

Associate Vice President
+1 952 374 5811
corbin.chapman@colliers.com

Collin Barr Jr.

Associate
+1 952 897 7747
collin.barr@colliers.com

Colliers

1600 Utica Ave S
Suite 300
St. Louis Park, MN 55416

colliers.com

