

2750 W MCDOWELL

Phoenix, AZ 85009

INDUSTRIAL PROPERTY FOR LEASE



PROPERTY DESCRIPTION

C-3 Zoning
Grade Level Loading
Stand Alone Building
Excellent Freeway Access
Concrete Tilt Construction

2750 W MCDOWELL - 3,354 ±SF

- 100% Office
- Single Phase Power

(See Attached Floor Plan on Reverse Side)



2150 East Highland Avenue, Suite 207, Phoenix, AZ 85016 // 602.955.3500 // cutlercommercial.com

ROD CROTTY

Associate Broker
602.386.1225 (D)
rcrotty@cutlercommercial.com

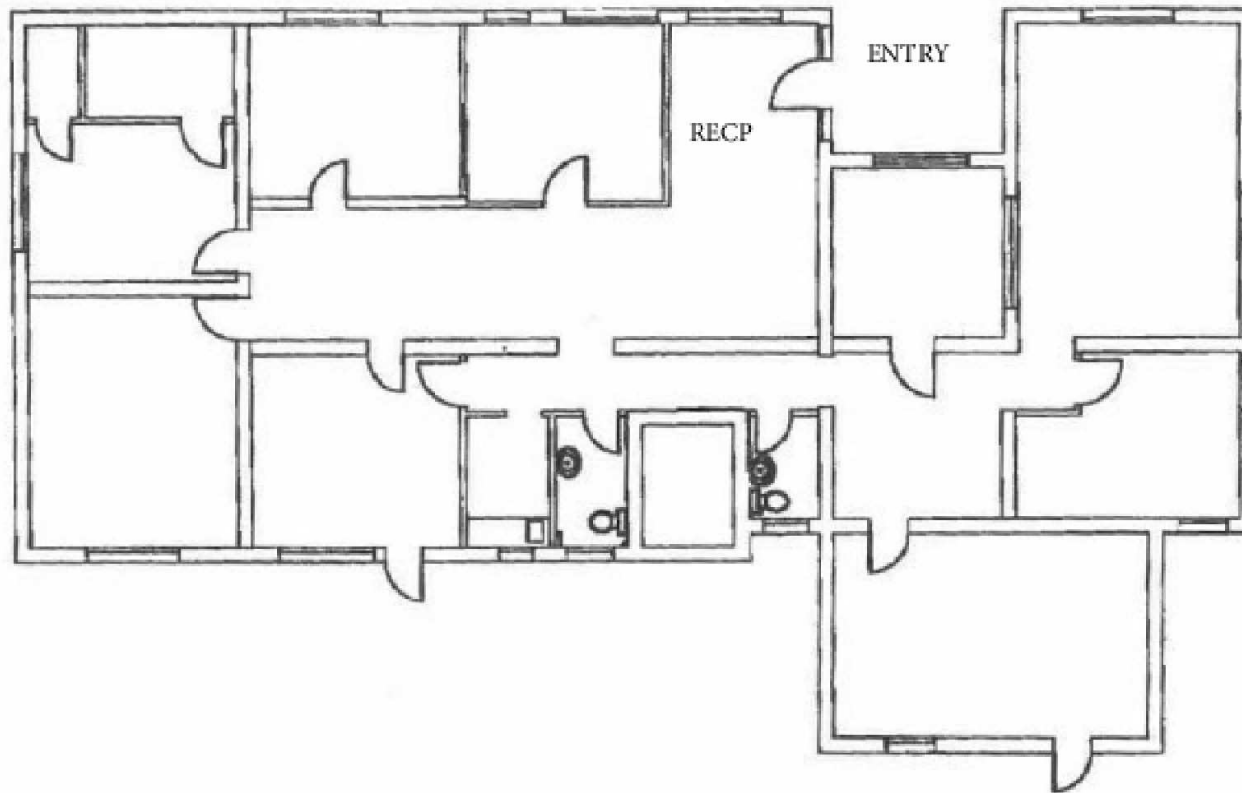


All information furnished is from sources deemed reliable. No representation is made as to the accuracy thereof and it is submitted subject to errors, omissions, changes, or withdrawal without notice and to any special listings conditions, including the rate and manner of payment of commissions for particular offerings imposed by principals or agreed to by the company, the terms of which are available to interested principals or brokers. All dimensions are approximate. Owner and/or Broker make no representations expressed or implied as to the accuracy of floor plan/site plan dimensions.

2750 W MCDOWELL

Phoenix, AZ 85009

INDUSTRIAL PROPERTY FOR LEASE



2150 East Highland Avenue, Suite 207, Phoenix, AZ 85016 // 602.955.3500 // cutlercommercial.com

ROD CROTTY

Associate Broker
602.386.1225 (D)
rcrotty@cutlercommercial.com



All information furnished is from sources deemed reliable. No representation is made as to the accuracy thereof and it is submitted subject to errors, omissions, changes, or withdrawal without notice and to any special listings conditions, including the rate and manner of payment of commissions for particular offerings imposed by principals or agreed to by the company, the terms of which are available to interested principals or brokers. All dimensions are approximate. Owner and/or Broker make no representations expressed or implied as to the accuracy of floor plan/site plan dimensions.