

# 6260 MANGO AVE. FONTANA | CA



## PROPERTY HIGHLIGHTS



### 113,930 SF

FREESTANDING CLASS A DISTRIBUTION BUILDING



### 32'

CLEAR HEIGHT



### 19

DOCK DOORS



TBD AMPS – EXPANDABLE POWER



**FOR SALE: TBD | FOR LEASE: \$1.30 / SF NNN**

TENANT INCENTIVE: UP TO 6 MONTH'S ½ RENT ON 3 – 5-YEAR LEASE  
TERM SIGNED BY JULY 31ST ON APPROVED CREDIT

## CONTACTS

For More Information, Contact:

**NOAH SAMARIN**  
EXECUTIVE VICE PRESIDENT  
P: 909.912.0007  
nsamarin@daumcre.com  
CA License #01755814

**DAVID GORES**  
VICE PRESIDENT  
P: 909.652.9059  
dgores@daumcre.com  
CA License #01502471

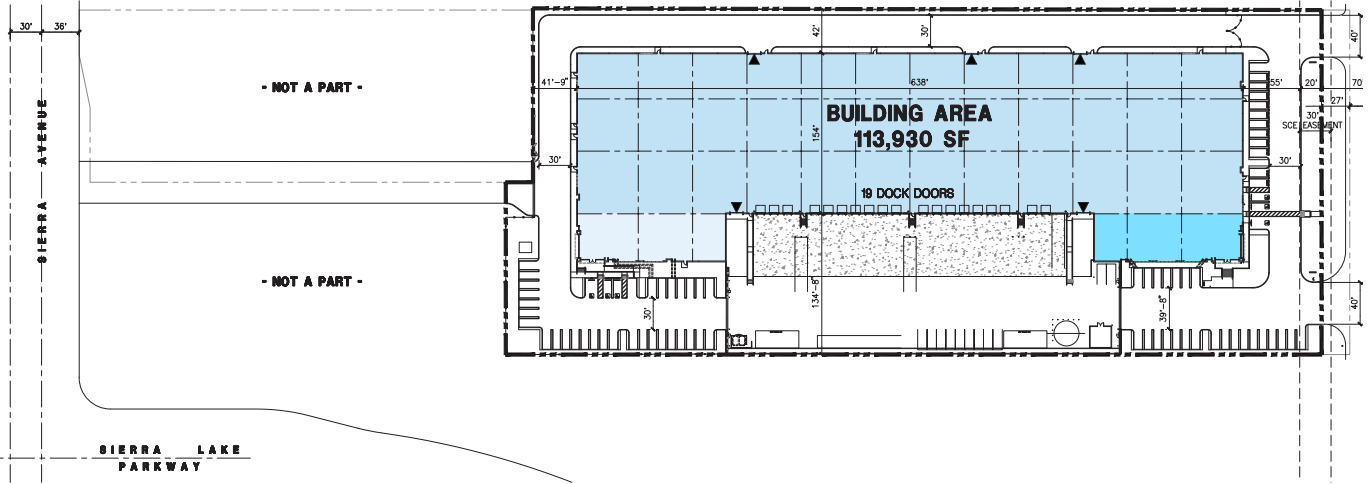
**GARY WOMACK**  
VICE PRESIDENT  
P: 909.652.9041  
gwomack@daumcre.com  
CA License #00795648

# FOR SALE OR LEASE

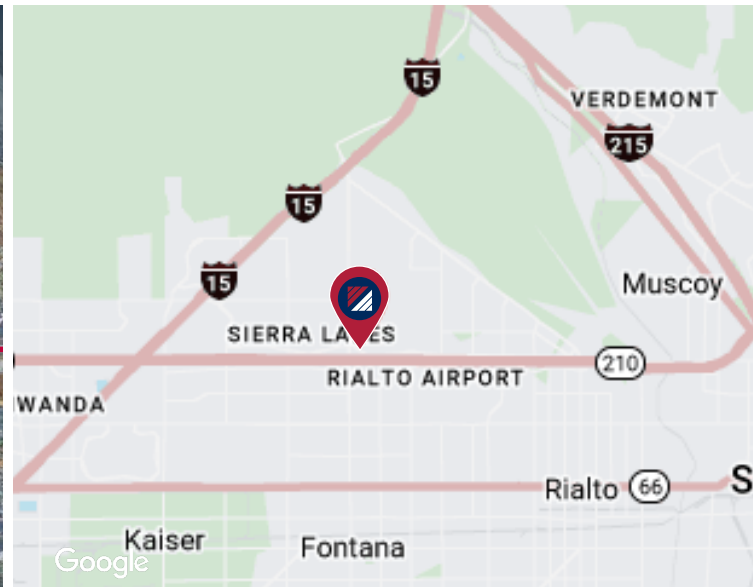
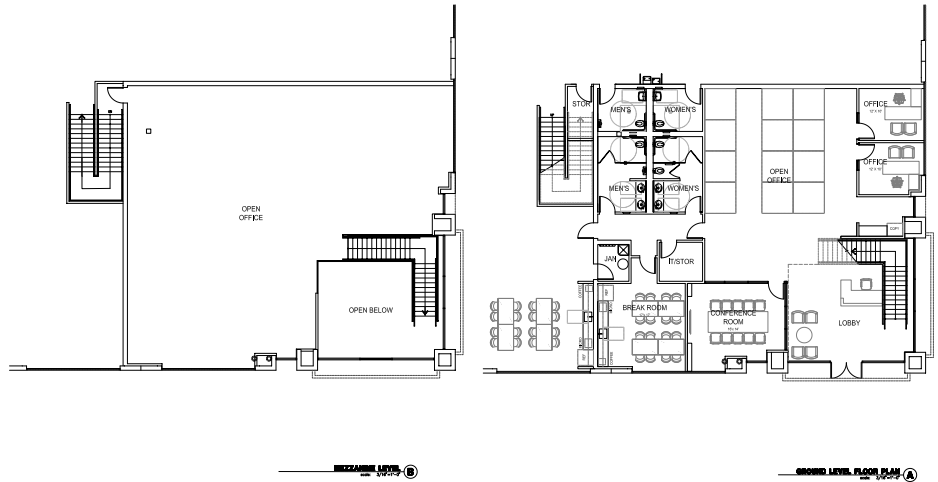
# 6260 MANGO AVE.

FONTANA | CA

# FOR SALE OR LEASE



**CONCEPTUAL FLOOR PLAN**  
 GROUND LEVEL = 3,332 SF  
 MEZZANINE = 2,830 SF  
 -----  
**6,162 SF TOTAL**



# 6260 MANGO AVE. FONTANA | CA

## FOR SALE OR LEASE

