

FOR LEASE

1923-1939

S. SANTA FE AVENUE

CENTURY MACHINERY CAMPUS

The Century Machinery Campus is an architectural gem situated in the South Arts District of Los Angeles.



FOUND: Historic Hub for the Contemporary Creator

Since 1934, the Century Machinery campus has been a beacon of Los Angeles' industrial legacy. Situated in the vibrant South Arts District, this architectural gem now stands ready for its next evolution. Here, history meets opportunity: a space rich in stories, poised for today's visionary creators to make their indelible mark.

1923 FOR
LEASE

- SUITE 500: 3,000 SF
- LEASE RATE: \$2.30 MG

1939 FOR
LEASE

- 3,895 SF
- LEASE RATE: \$2.25 MG

SIZE



3,000 - 6,895 SF

Option to lease both suites individually or collectively

PARKING



Up to 6 reserved spots, ample street parking

TERM



Negotiable



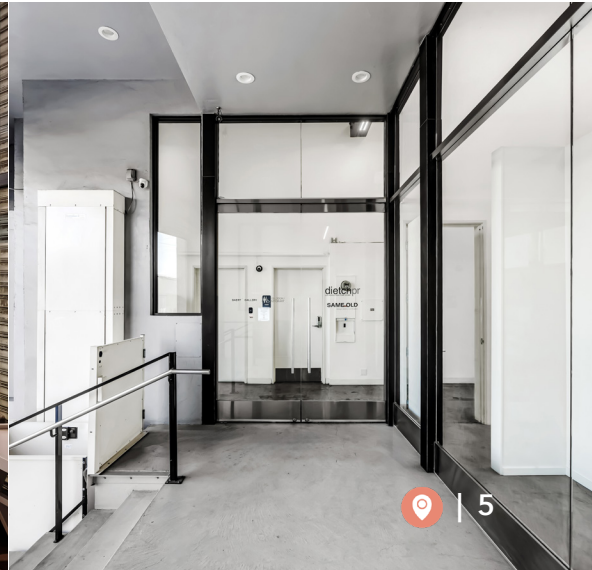
1939 S SANTA FE AVE

SUITE PHOTOS



1923 S SANTA FE AVE

SUITE 500

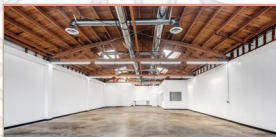
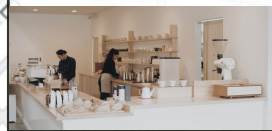


NEIGHBORHOOD AMENITIES

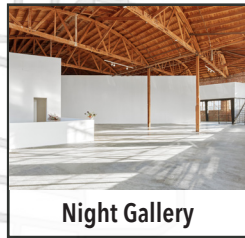
From trendy restaurants and coffee shops to museums, the Los Angeles Art District has many amenities to offer.



BRERA Ristorante



1923-1939 S Santa Fe Ave



Night Gallery



YES Restaurant



Soho Warehouse



Vielmetter Los Angeles

AREA OVERVIEW



Downtown Los Angeles

Little Tokyo



1923 S Santa Fe Avenue

1939 S Santa Fe Avenue

S Santa Fe Avenue

1923-1939

S. SANTA FE AVENUE

CENTURY MACHINERY CAMPUS

**Matt
McLaughlin**

Principal

T 310.694.3979

matt@foundcre.com

BRE #02079289

**Doug
Fillmore**

Principal

T 310.943.7169

doug@foundcre.com

BRE #02092675

FOUND.
REAL ESTATE

FoundCRE.com

Every effort has been made to accurately represent this property and its potential. However, all information and estimates provided are to be used for informational purposes only. They are not to be construed as an exact representation of the property or a prediction of future value. Potential lessees or buyers are advised to conduct a thorough investigation of the property independently. This brochure and the contents herein do not constitute a contract, warranty, or an offer, which can only be made by the property's legal owner. Images and depictions are for illustrative purposes only and may not represent current conditions or conveyance of the property.

