

**FOR SUBLEASE**

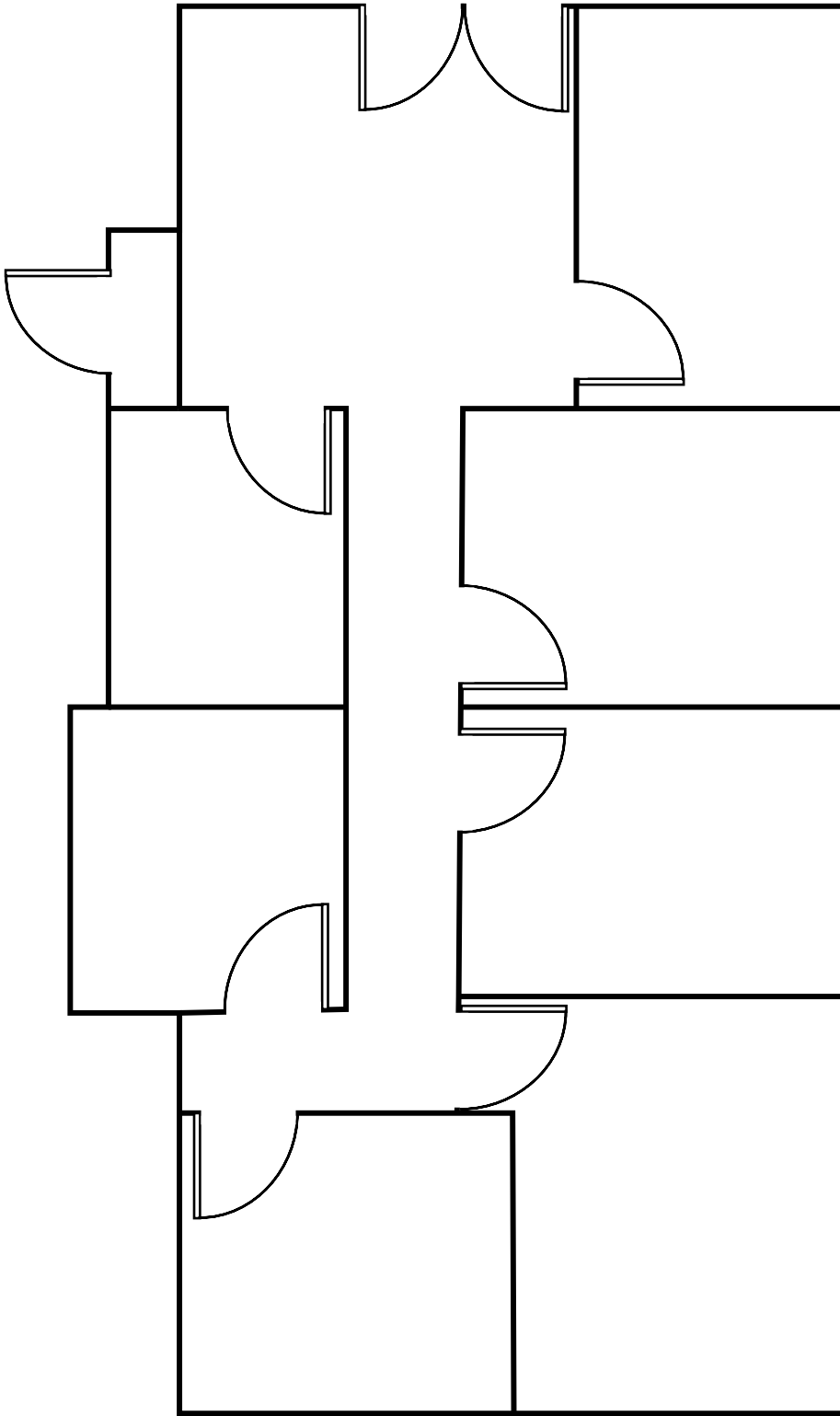
# 904 SF OFFICE AVAILABLE IN SALT LAKE CITY

## Property Highlights

- Size: 904 SF
- Lease Rate: \$16.64 PSF/FS
- Partially furnished
- Tenant pays their own janitorial
- Sublease expires March 31, 2027
- CBD office space with parking
- Directory signage available

**Tracy Forsling, MBA**  
**Associate**+1 801 652 6003  
tracy.forsling@cushwake.com[cushmanwakefield.com](https://www.cushmanwakefield.com)

## Floor Plan



**GATEWAY SHOPPING**



**CITY CREEK CENTER**



**CALVIN L. RAMPTON  
SALT PALACE  
CONVENTION CENTER**

**DELTA  
CENTER**

**CLARK  
PLANETARIUM**

**SUBJECT  
PROPERTY**

**PIONEER PARK-RIO GRANDE**



**SALT LAKE CITY**