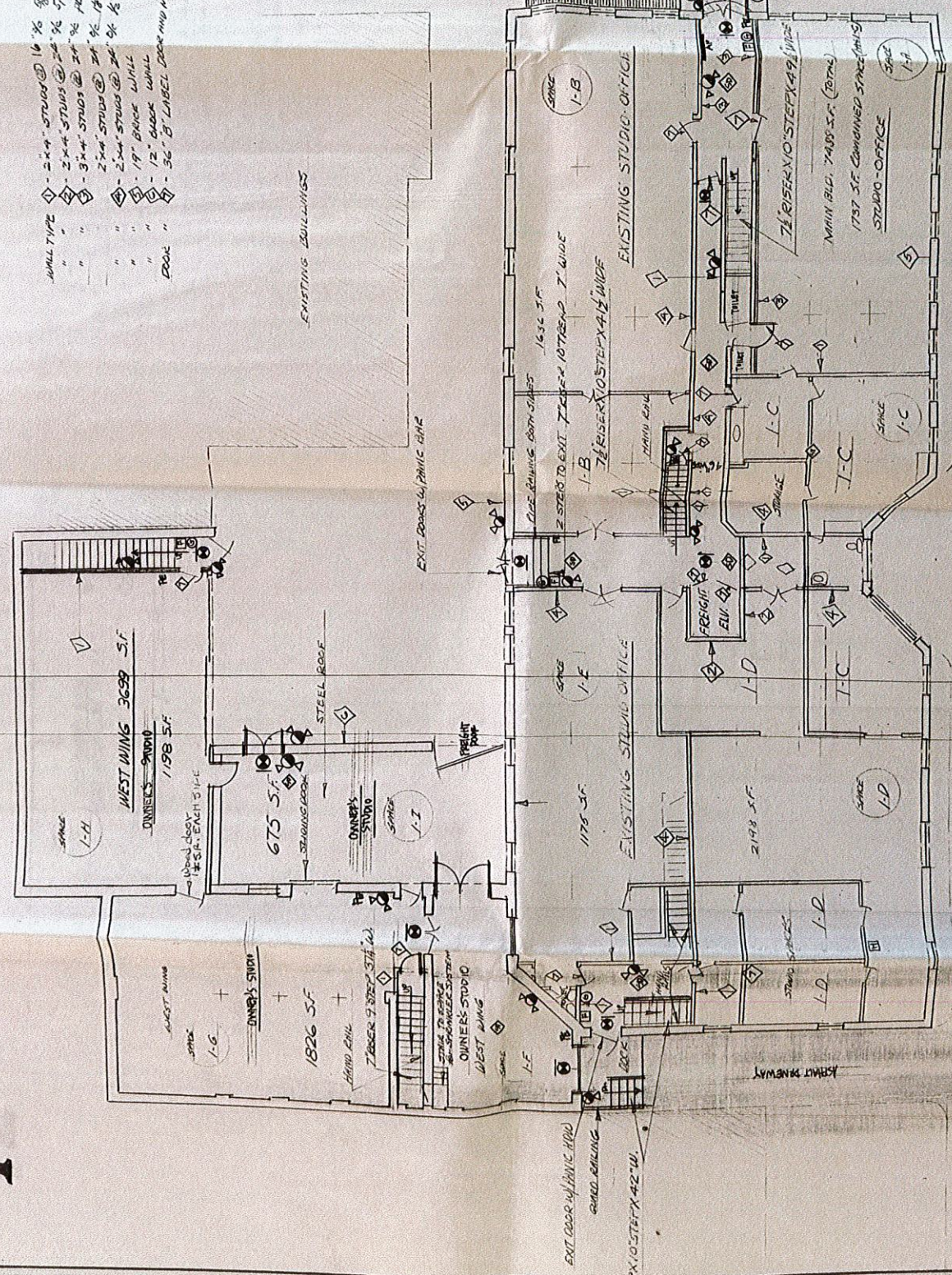


1

- WALL TYPE
- 2x4 STUDS @ 16" OC 5/8" TYPE 3 3/4" BATT INSUL.
- 2x4 STUDS @ 24" OC 5/8" TYPE
- 3x4 STUDS @ 24" OC 1" MINER A WITH 2 SWS
- 2x4 STUDS @ 24" OC 1/2" RSR ON INSIDE 1/2" ON OTHER
- 2x4 STUDS @ 24" OC 1/2" S.W. 3/4" BATT INSUL.
- 19" BRICK WALL
- 12" BRICK WALL
- 36" 8" LABEL DOOR AND METAL FRAMING 1 MR. RATED



STEEL GATE AT SIDEWALK
LEVEL OVER PIT FOR
BASEMENT WINDOWS

DESCRIPTIVE AIDS
SC FROM PLATFORM EDGE TO DOORS

The
MARTINSON
Group

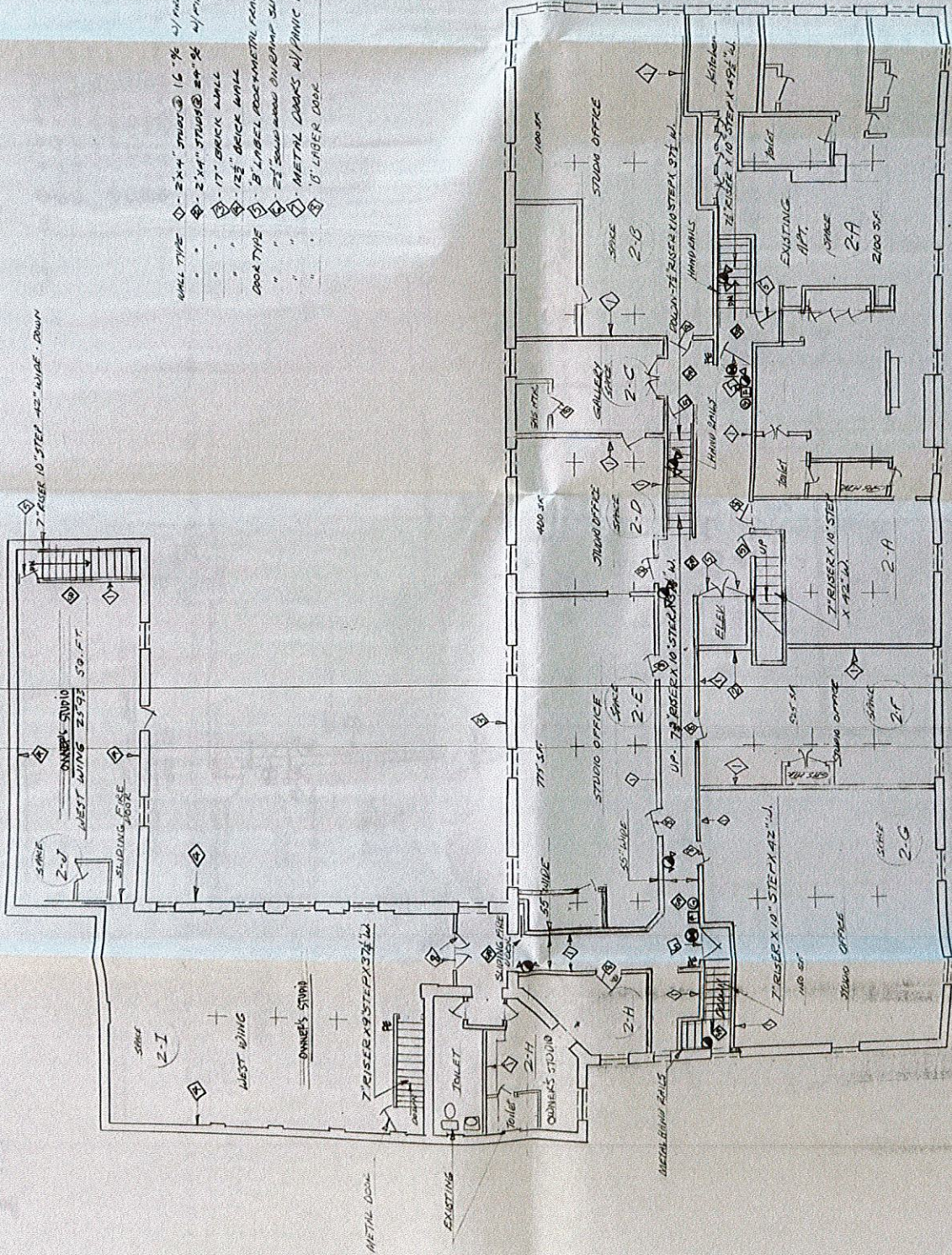
Architecture / Planning / Historic Preservation
204 Bushkill Street / Easton, PA 18042
610-252-9900

Sheet No. 3

FIRST FLOOR PLAN

280 FERRY STREET EASTON, PA.
SCALE 1/8" = 1 FOOT K. STIRNER OWNER

2



- WALL TYPE
- ◆ - 2"x4" STUDS @ 16" OC w/ 1/2" GYP OR 5/8" GYP TYPE
- ◆ - 2"x4" STUDS @ 24" OC w/ 1/2" GYP OR 5/8" GYP TYPE
- ◆ - 17" BRICK WALL
- ◆ - 12" BRICK WALL
- ◆ - 8" LABEL POST-METAL FRAME 1 HR. RATED
- ◆ - 2" SAND WOOD ON BRASS SLICE w/ 1/2" SINGLE LINK
- ◆ - METAL DOORS w/ 1/2" PVC ISHR
- ◆ - 5' LABEL DOOR
- 2 1/2" GAT INSULATION

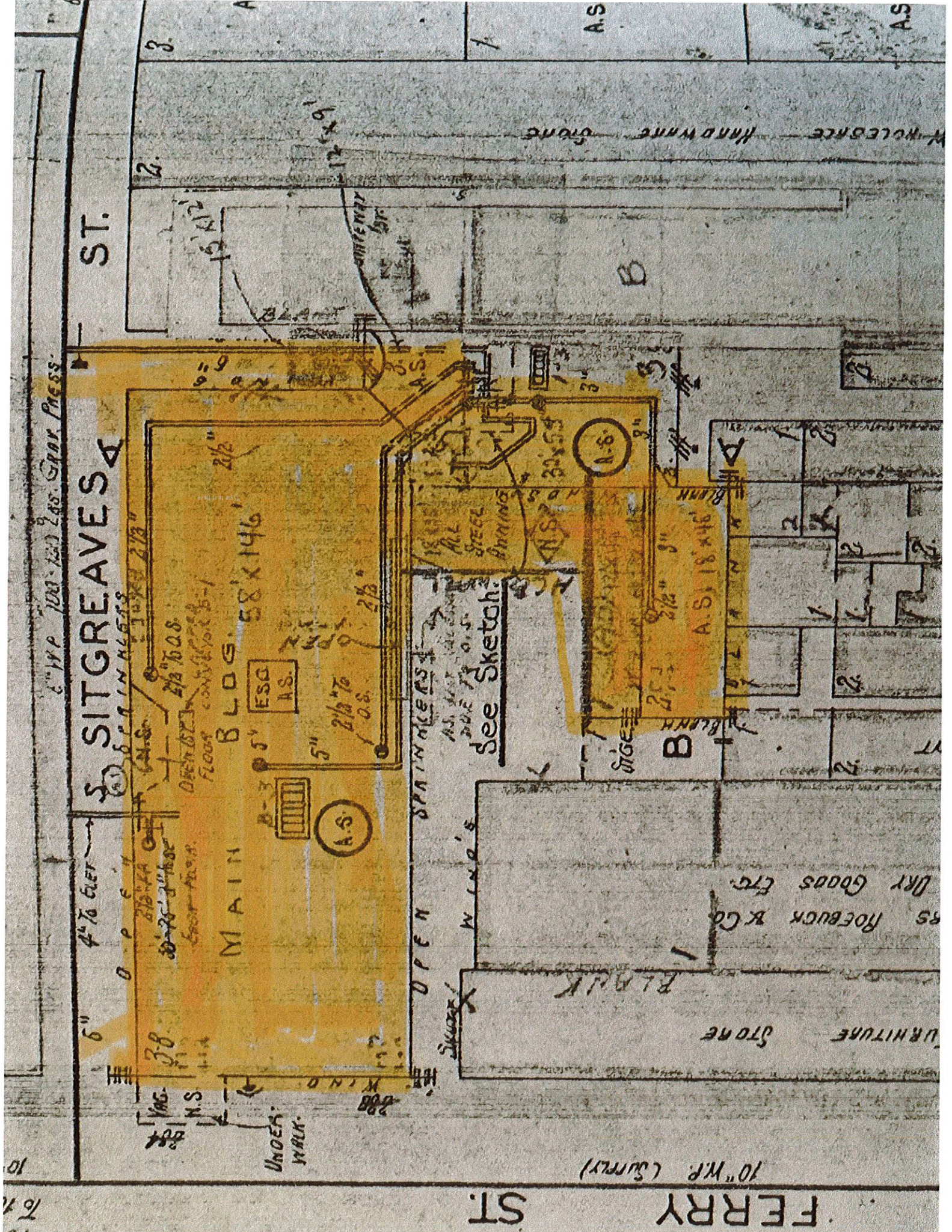
7" RISER 10" STEP 42" WIDE DOWN

SECOND FLOOR MAIN OLD 224' FEET 7632 SQ. FT.
 230-34 FEET 3712 SQ. FT. EASTON, PA.
 SCALE 1/8" = 1'-0" K. STUBNER - OWNER

The MARTINSON Group
 Architecture / Planning / Interior Architecture
 200 Biddle Street / Easton, PA 18042
 215/252-9000

SECOND FLOOR PLAN

Date: 2/1/90
 Scale: 1/8" = 1'-0"
 Sheet: 4



6" W.P. 100-120 200. GRAY. PRESS.

ST.

SITGREAVES

4" TO CEMENT

OPEN TOPS
FLOOR CONT. 10' x 10' 6-1

MAIN BLOS. 58' x 146'

ESG. A.S.

5" 2 1/2" TO O.S.

OPEN

OPEN SPAINCERS

See Sketch

ALL STEEL BRACING

N.S.

30' x 55'

A.S. 18' x 46'

DRY GOODS ETC.

RS ROEBUCK & CO

PLANK

STONE

URNITURE

UNDER WALK.

WALK.

SKETCH

ST.

FERRY

10" W.P. (CURRY)

10
10

2.

3.

A

1

A.S.

A.S.

HAND WARE STONE

B

A

2

3

2

3

2

3

2

3

2

3

2

3

2

3

2

3

2

3

2

3

2

3

2

3

12' x 9'

TEMP. RE. BR.

9' x 9'

2 1/2"

2 1/2"

2 1/2"

2 1/2"

2 1/2"

2 1/2"

2 1/2"

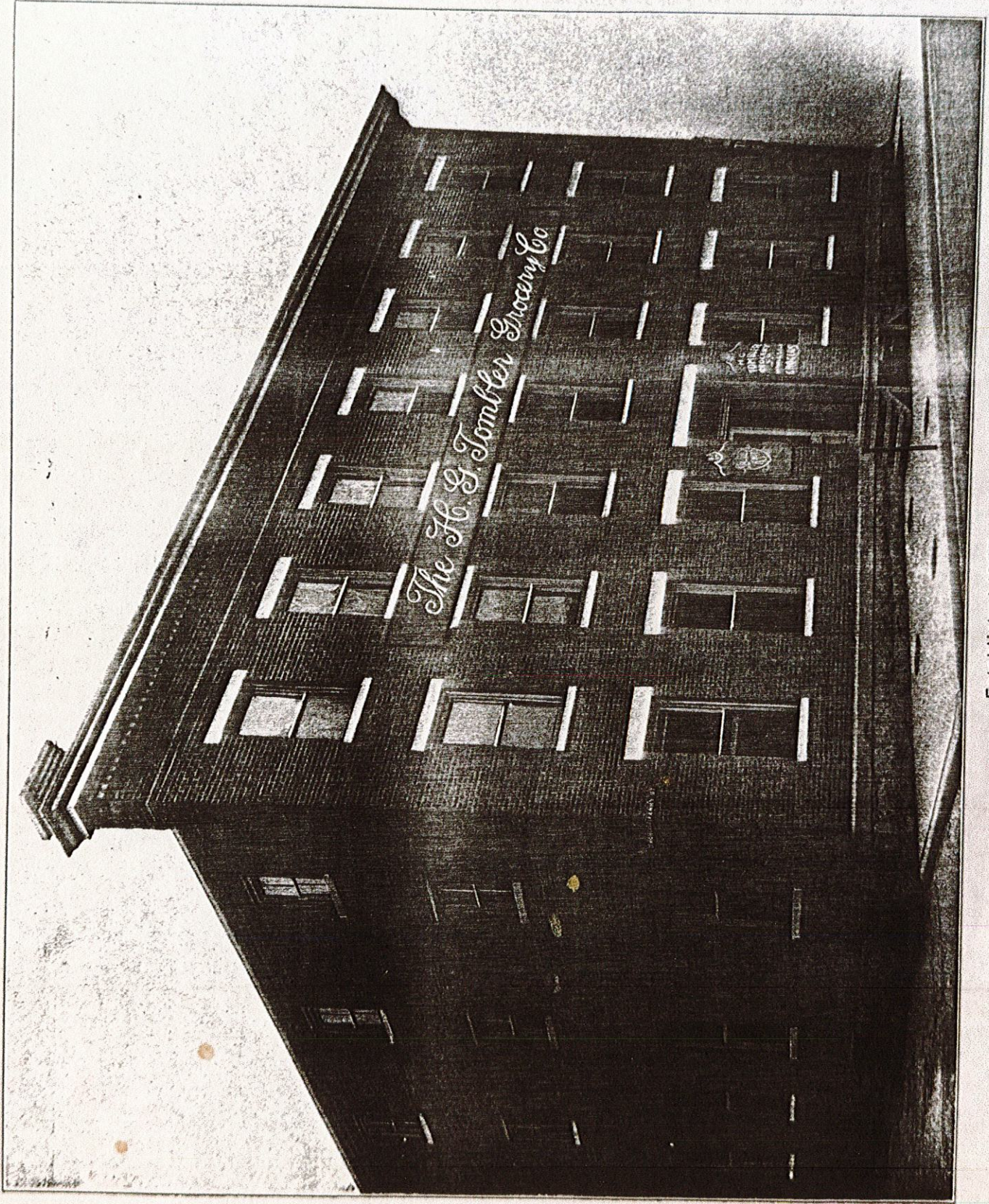
2 1/2"

2 1/2"

2 1/2"

2 1/2"

WE INVITE YOU TO SETTLE IN OUR RESOURCEFUL CITY



Established 1857

