

Office space for lease  
**595 Financial Center - 595 Tower**

595 Federal Hwy | Boca Raton, FL 33432



Premier downtown  
Boca Raton location



Onsite  
management



Covered portico  
entry with valet



24/7 building  
access via smart  
card access control



Structured  
parking

Rental rate

**\$30.00 psf NNN**

Operating expenses

**\$23.00 psf**

**Get in  
touch:**

**Greg Martin**

Principal, Managing Director -  
Fort Lauderdale & Boca Raton  
954 903 1815

[greg.martin@avisonyoung.com](mailto:greg.martin@avisonyoung.com)

**Justin Cope, SIOR**

Principal  
954 903 3701

[justin.cope@avisonyoung.com](mailto:justin.cope@avisonyoung.com)

**Lisa Blumer, CCIM**

Principal  
954 903 3703

[lisa.blumer@avisonyoung.com](mailto:lisa.blumer@avisonyoung.com)

## Availability

Suite 130: 1,769 sf

Suite 240: 4,264 sf

Suite 500: 13,554 sf

Suite 610: 1,955 sf

*Brand New Spec Suite Available 12/1/24*

---

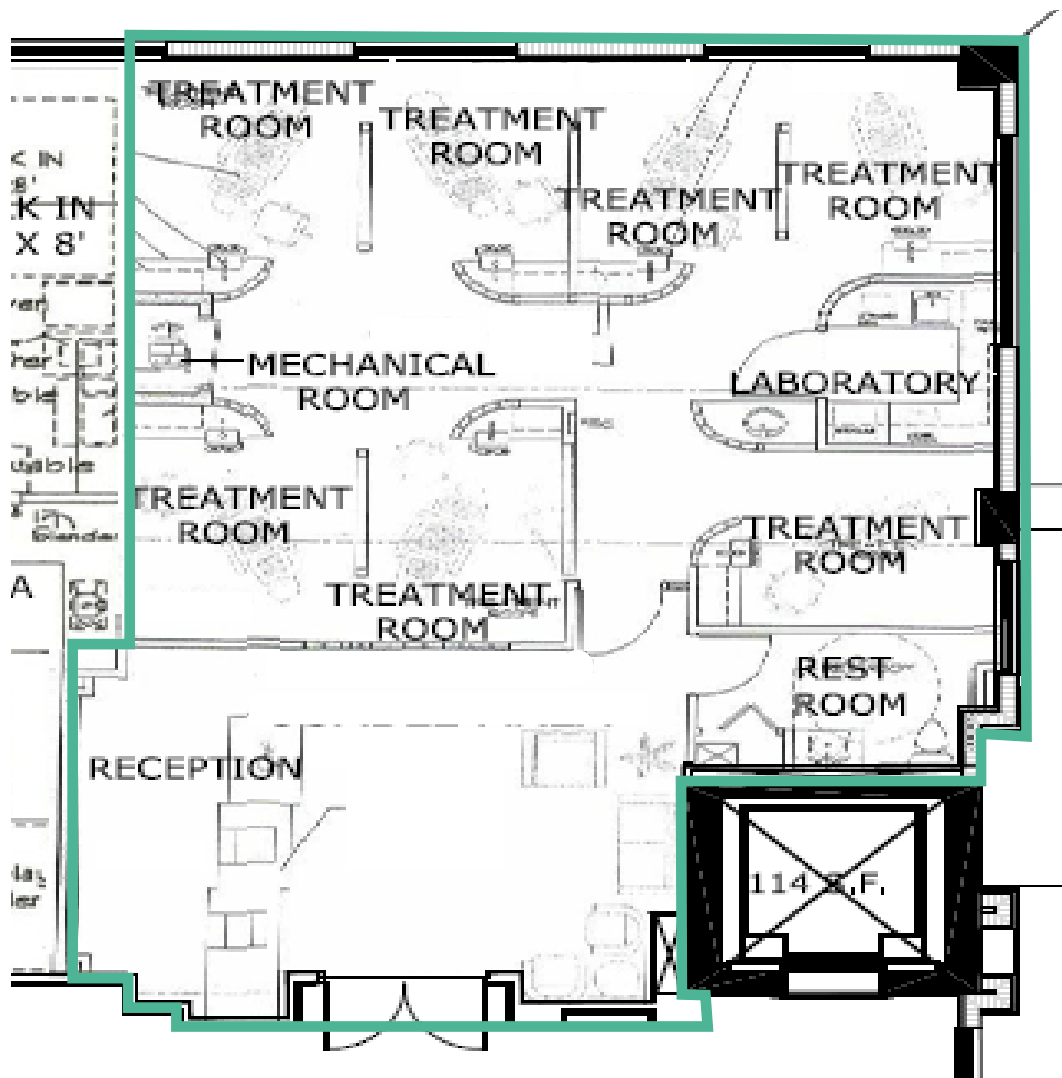
### Get in touch:

**Greg Martin**  
Principal, Managing Director -  
Fort Lauderdale & Boca Raton  
954 903 1815  
[greg.martin@avisonyoung.com](mailto:greg.martin@avisonyoung.com)

**Justin Cope, SIOR**  
Principal  
954 903 3701  
[justin.cope@avisonyoung.com](mailto:justin.cope@avisonyoung.com)

**Lisa Blumer, CCIM**  
Principal  
954 903 3703  
[lisa.blumer@avisonyoung.com](mailto:lisa.blumer@avisonyoung.com)

**Suite 130 - 1,769 sf**



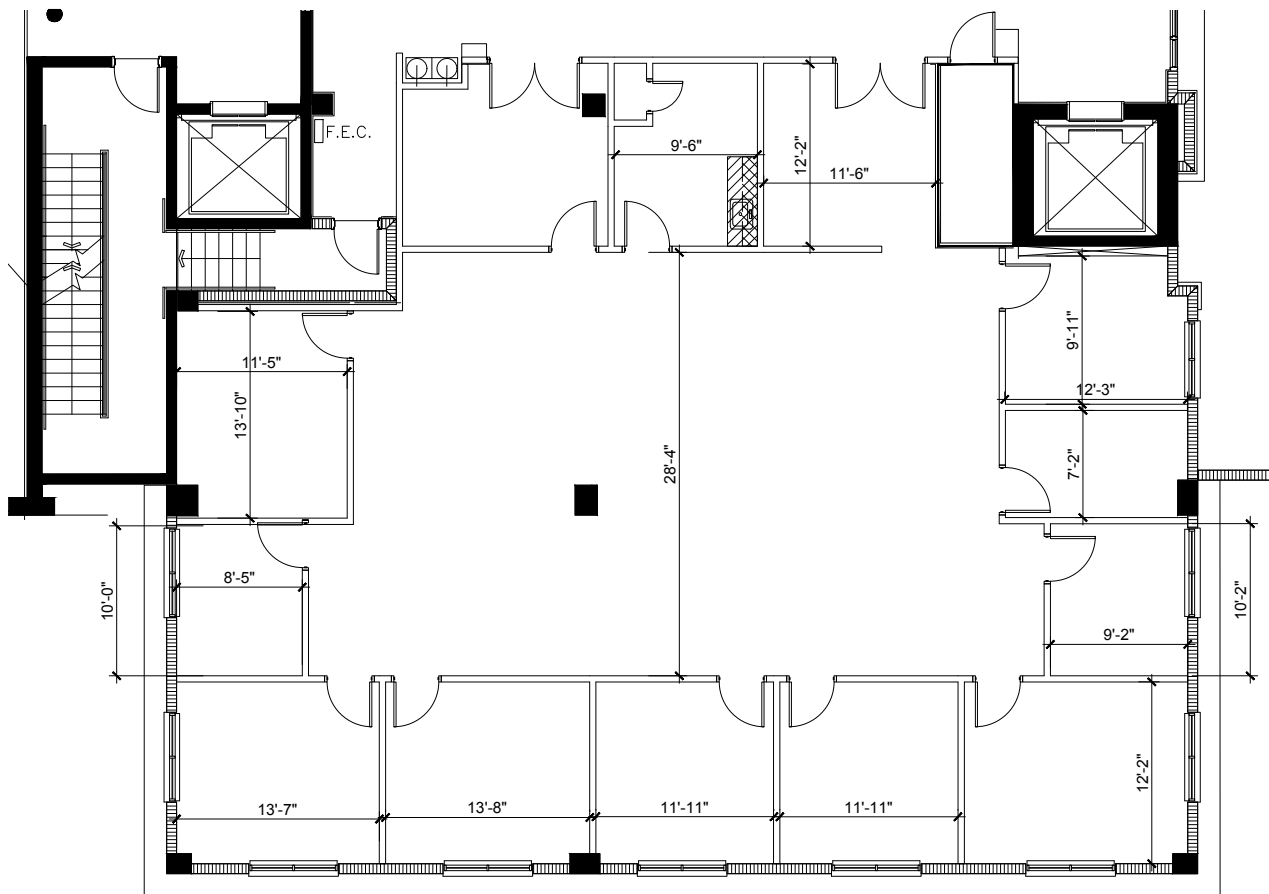
**Get in  
touch:**

**Greg Martin**  
Principal, Managing Director -  
Fort Lauderdale & Boca Raton  
954 903 1815  
greg.martin@avisonyoung.com

**Justin Cope, SIOR**  
Principal  
954 903 3701  
justin.cope@avisonyoung.com

**Lisa Blumer, CCIM**  
Principal  
954 903 3703  
lisa.blumer@avisonyoung.com

**Suite 240 - 4,264 sf**



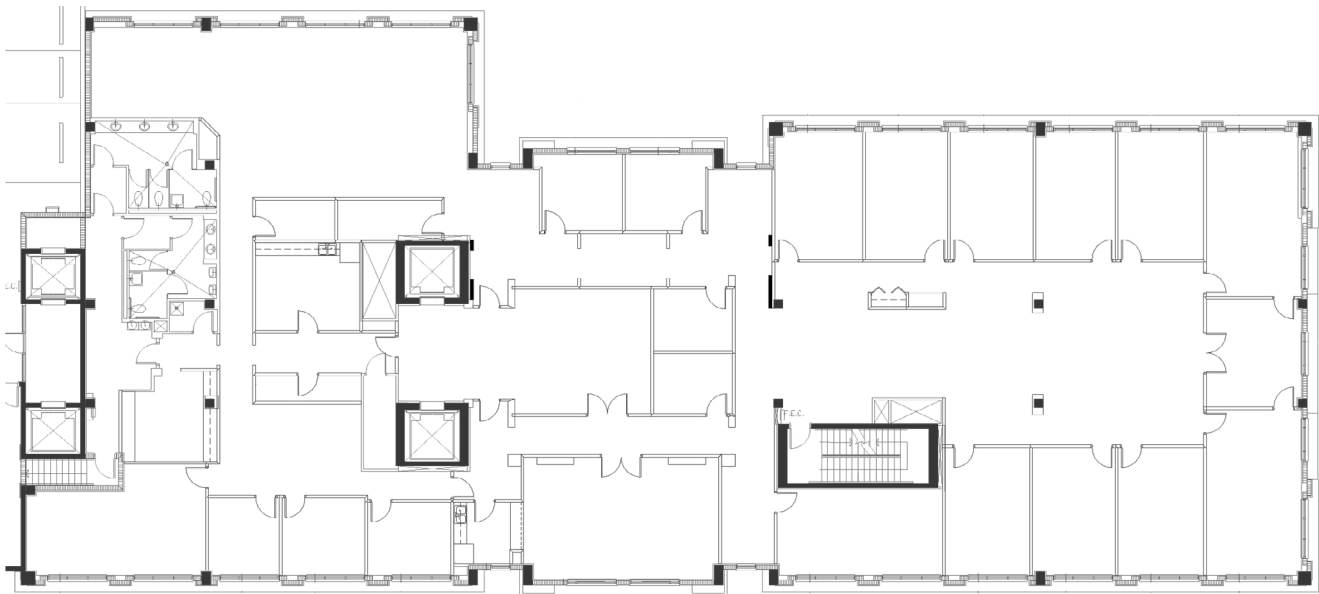
**Get in  
touch:**

**Greg Martin**  
Principal, Managing Director -  
Fort Lauderdale & Boca Raton  
954 903 1815  
greg.martin@avisonyoung.com

**Justin Cope, SIOR**  
Principal  
954 903 3701  
justin.cope@avisonyoung.com

**Lisa Blumer, CCIM**  
Principal  
954 903 3703  
lisa.blumer@avisonyoung.com

**Suite 500 - 13,554 sf**



**Get in  
touch:**

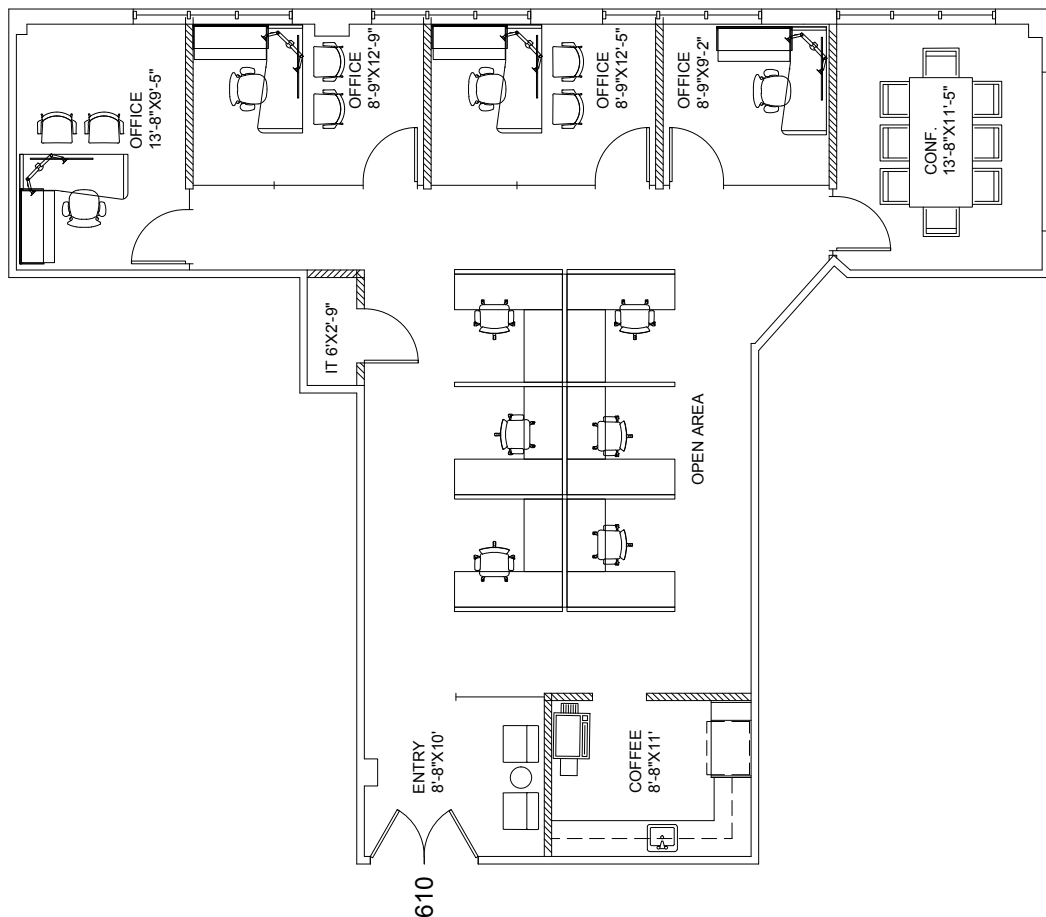
**Greg Martin**  
Principal, Managing Director -  
Fort Lauderdale & Boca Raton  
954 903 1815  
[greg.martin@avisonyoung.com](mailto:greg.martin@avisonyoung.com)

**Justin Cope, SIOR**  
Principal  
954 903 3701  
[justin.cope@avisonyoung.com](mailto:justin.cope@avisonyoung.com)

**Lisa Blumer, CCIM**  
Principal  
954 903 3703  
[lisa.blumer@avisonyoung.com](mailto:lisa.blumer@avisonyoung.com)

## Suite 610 - 1,955 sf

*Brand New Spec Suite Available 12/1/24*



**Get in  
touch:**

**Greg Martin**  
Principal, Managing Director -  
Fort Lauderdale & Boca Raton  
954 903 1815  
greg.martin@avisonyoung.com

**Justin Cope, SIOR**  
Principal  
954 903 3701  
justin.cope@avisonyoung.com

**Lisa Blumer, CCIM**  
Principal  
954 903 3703  
lisa.blumer@avisonyoung.com