

KERMIER COMMERCE PARK

18602 -18612 & 18626 -18638 KERMIER ROAD
HOCKLEY, TX 77447



FOR SALE OR LEASE

PROPERTY HIGHLIGHTS

- » Nine (9) buildings ranging from $\pm 5,500$ SF - $\pm 15,950$ SF
- » Tilt-wall construction
- » Build-to-suit office
- » $\pm 18'$ - $24'$ clear height
- » Dock-high and grade-level loading
- » 3-phase / 480 volts / 200 amps
- » ESFR Dock-high buildings
- » Truck accessible business park with ample parking
- » Well and septic
- » 1.928% tax rate
- » Shell complete Q4 2024
- » ± 17.95 AC of additional land for sale or build-to-suit
- » Call broker for pricing



GRADE-LEVEL BUILDINGS

BUILDING 1 (18612 KERMIER RD)

- ±7,500 SF total
- ±18' Clear height
- BTS Office
- Two (2) 12' x 14' Grade-level doors
- 3-phase / 480 volt / 200 amps power

BUILDING 2 (18610 KERMIER RD)

- ±5,500 SF total
- ±18' clear height
- BTS office
- Two (2) 12' x 14' grade-level doors
- 3-phase / 480 volt / 200 amps power

BUILDING 3 (18608 KERMIER RD)

- ±6,500 SF total
- ±18' clear height
- BTS office
- Two (2) 12' x 14' grade-level doors
- 3-phase / 480 volt / 200 amps power

BUILDING 4 (18606 KERMIER RD)

- ±6,000 SF total
- ±18' clear height
- BTS office
- Two (2) 12' x 14' grade-level doors
- 3-phase / 480 volt / 200 amps power

BUILDING 5 (18604 KERMIER RD)

- ±7,500 SF total
- ±18' clear height
- BTS office
- Two (2) 12' x 14' grade-level doors
- 3-phase / 480 volt / 200 amps power

BUILDING 6 (18602 KERMIER RD)

- ±6,000 SF total
- ±18' clear height
- BTS office
- Two (2) 12' x 14' grade-level doors
- 3-phase / 480 volt / 200 amps power

DOCK-HIGH BUILDINGS

BUILDING 13 (18626 KERMIER RD)

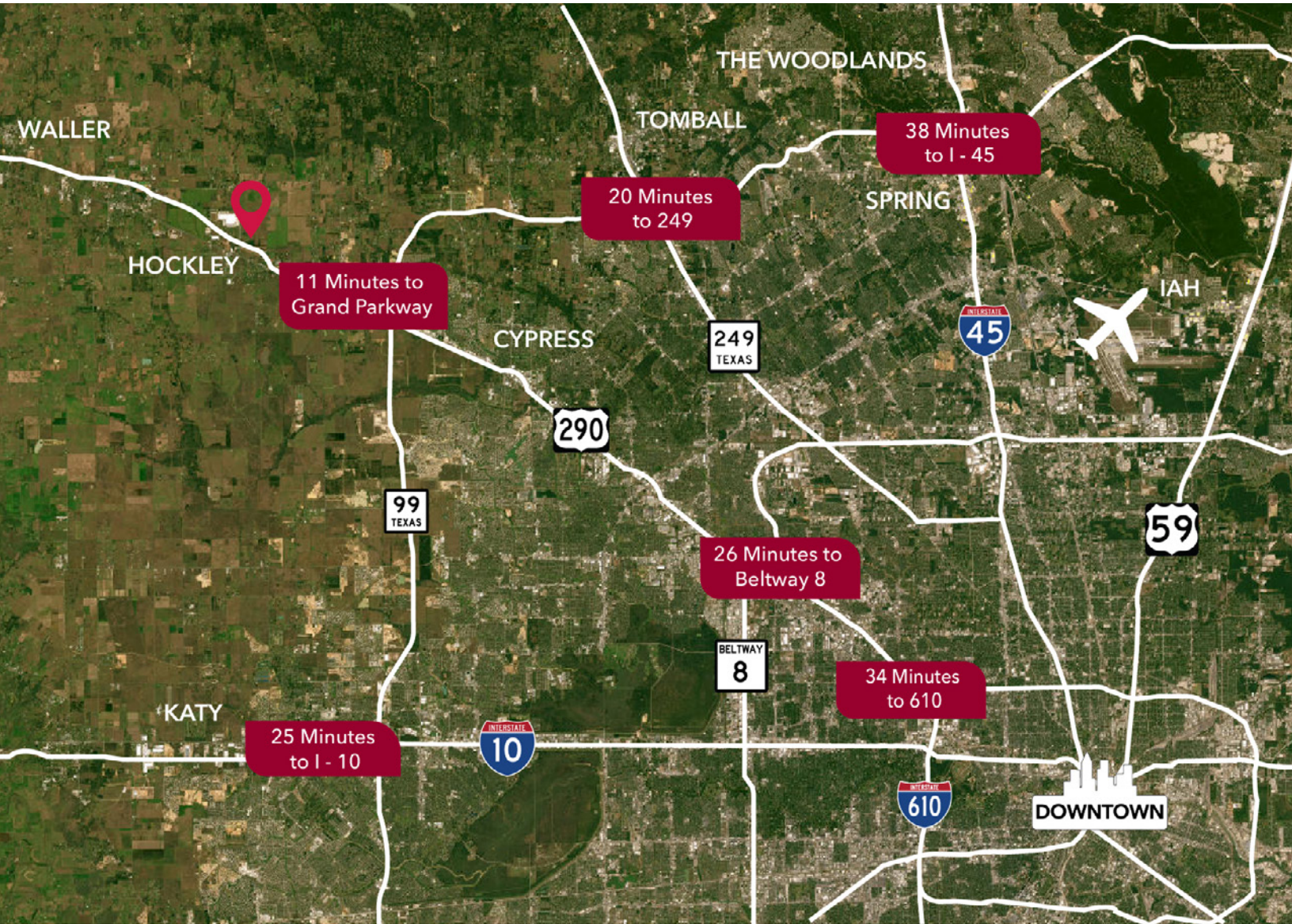
- ±12,650 SF total
- ±24' clear height
- BTS office
- One (1) 12' x 14' grade-level door
- Two (2) 12' x 14' dock-high doors
- 3-phase / 480 volt / 400 amps power
- ESFR

BUILDING 14 (18638 KERMIER RD)

- ±14,300 SF total
- ±24' clear height
- BTS office
- One (1) 12' x 14' grade-level door
- Two (2) 12' x 14' dock-high doors
- 3-phase / 480 volt / 400 amps power
- ESFR

BUILDING 15 (18632 KERMIER RD)

- ±15,950 SF Total
- ±24' Clear height
- BTS Office
- One (1) 12' x 14' grade-level door
- Two (2) 12' x 14' dock-high doors
- 3-phase / 480 volt / 400 amps power
- ESFR





Mason Alsbrooks, CCIM | *Principal*
 malsbrooks@lee-associates.com
 C 713.744.7417

Mike Spears, SIOR, CCIM | *Managing Principal*
 mspears@lee-associates.com
 C 713.744.7404