

## SUITE 117

±4,869 RSF

FOR LEASING INFO  
PLEASE CONTACT:

### SHEILA BALE

MANAGING DIRECTOR  
+1 602 224 4454  
sheila.bale@cushwake.com

### TOM WEINHOLD

MANAGING DIRECTOR  
+1 602 224 4428  
tom.weinhold@cushwake.com

### ERIKA ECKBLAD

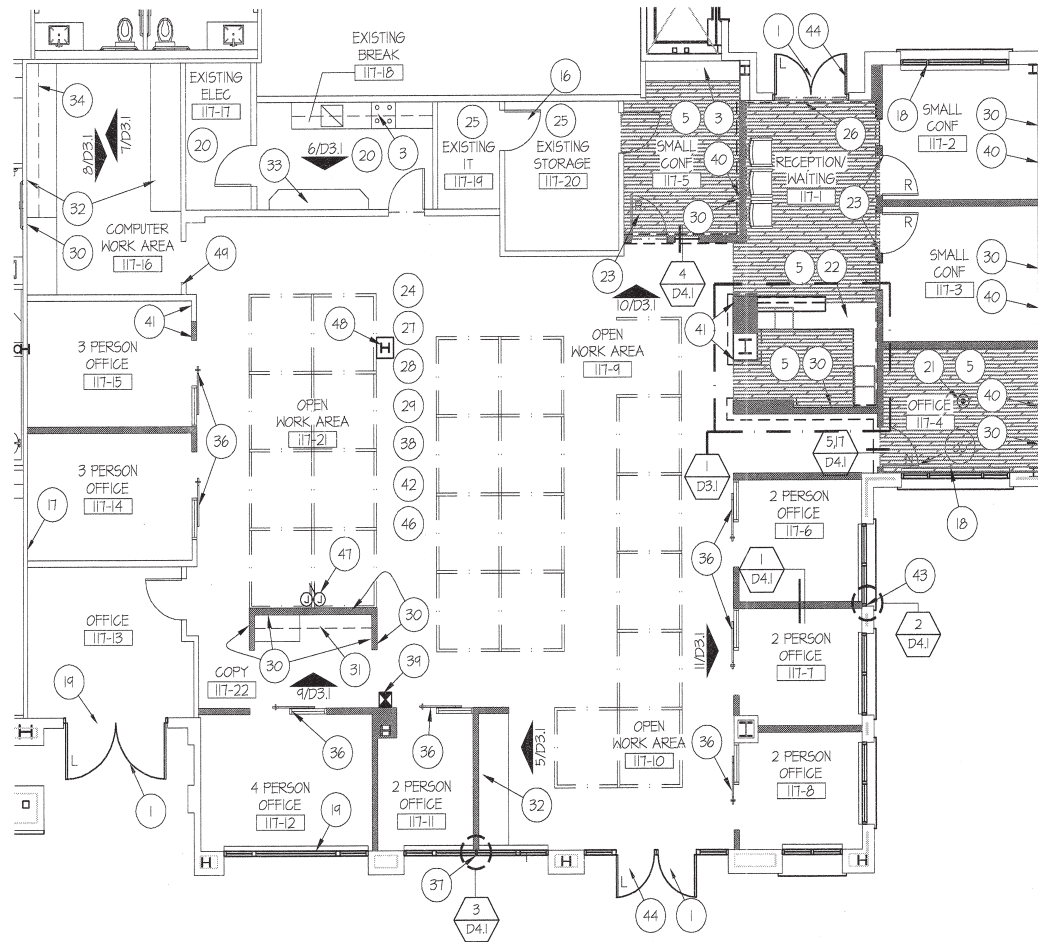
SENIOR ASSOCIATE  
+1 602 224 4451  
erika.eckblad@cushwake.com



2555 E Camelback Rd, Suite 400  
Phoenix, Arizona 85016  
Main +1 602 954 9000  
Fax +1 602 253 0528  
cushmanwakefield.com

# PREMIER MEDICAL OFFICE SPACE

7221 E PRINCESS BLVD | SCOTTSDALE AZ 85255



©2025 Cushman & Wakefield. All rights reserved. The information contained in this communication is strictly confidential. This information has been obtained from sources believed to be reliable but has not been verified. NO WARRANTY OR REPRESENTATION, EXPRESS OR IMPLIED, IS MADE AS TO THE CONDITION OF THE PROPERTY (OR PROPERTIES) REFERENCED HEREIN OR AS TO THE ACCURACY OR COMPLETENESS OF THE INFORMATION CONTAINED HEREIN, AND SAME IS SUBMITTED SUBJECT TO ERRORS, OMISSIONS, CHANGE OF PRICE, RENTAL OR OTHER CONDITIONS, WITHDRAWAL WITHOUT NOTICE, AND TO ANY SPECIAL LISTING CONDITIONS IMPOSED BY THE PROPERTY OWNER(S). ANY PROJECTIONS, OPINIONS OR ESTIMATES ARE SUBJECT TO UNCERTAINTY AND DO NOT SIGNIFY CURRENT OR FUTURE PROPERTY PERFORMANCE.

SUITE 208

±1,196 RSF

FOR LEASING INFO  
PLEASE CONTACT:

**SHEILA BALE**

MANAGING DIRECTOR  
+1 602 224 4454  
sheila.bale@cushwake.com

**TOM WEINHOLD**

MANAGING DIRECTOR  
+1 602 224 4428  
tom.weinhold@cushwake.com

**ERIKA ECKBLAD**

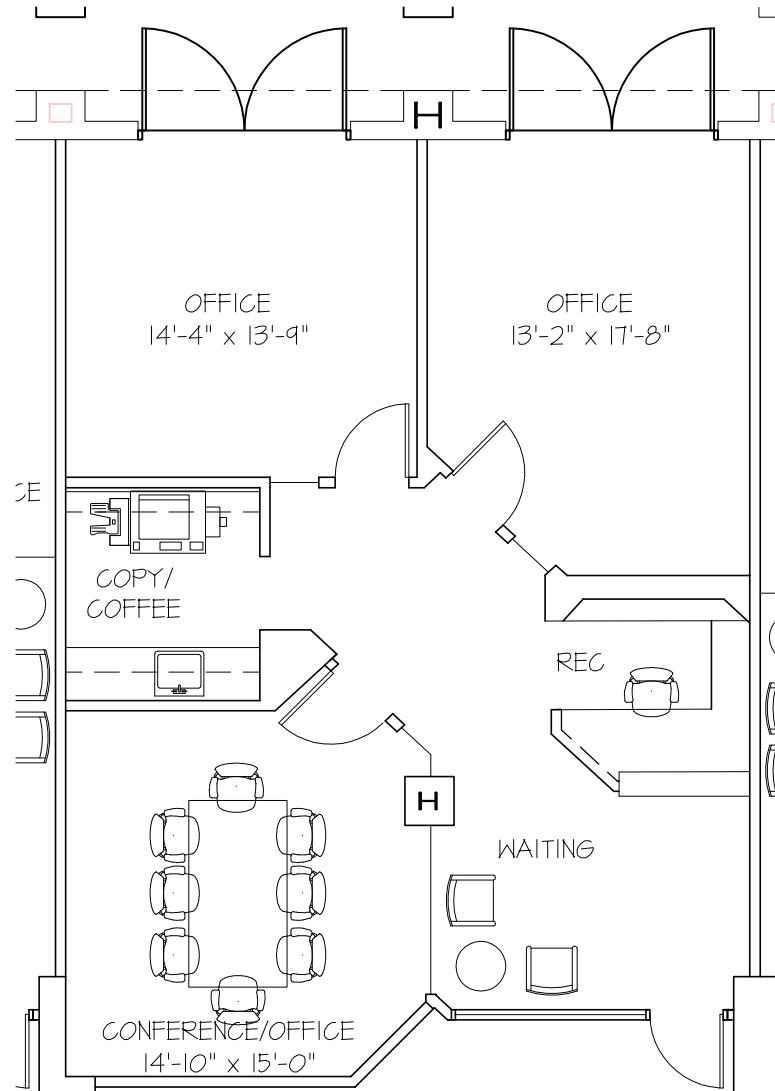
SENIOR ASSOCIATE  
+1 602 224 4451  
erika.eckblad@cushwake.com



2555 E Camelback Rd, Suite 400  
Phoenix, Arizona 85016  
Main +1 602 954 9000  
Fax +1 602 253 0528  
cushmanwakefield.com

PREMIER MEDICAL OFFICE SPACE

7231 E PRINCESS BLVD | SCOTTSDALE AZ 85255



©2025 Cushman & Wakefield. All rights reserved. The information contained in this communication is strictly confidential. This information has been obtained from sources believed to be reliable but has not been verified. NO WARRANTY OR REPRESENTATION, EXPRESS OR IMPLIED, IS MADE AS TO THE CONDITION OF THE PROPERTY (OR PROPERTIES) REFERENCED HEREIN OR AS TO THE ACCURACY OR COMPLETENESS OF THE INFORMATION CONTAINED HEREIN, AND SAME IS SUBMITTED SUBJECT TO ERRORS, OMISSIONS, CHANGE OF PRICE, RENTAL OR OTHER CONDITIONS, WITHDRAWAL WITHOUT NOTICE, AND TO ANY SPECIAL LISTING CONDITIONS IMPOSED BY THE PROPERTY OWNER(S). ANY PROJECTIONS, OPINIONS OR ESTIMATES ARE SUBJECT TO UNCERTAINTY AND DO NOT SIGNIFY CURRENT OR FUTURE PROPERTY PERFORMANCE.

## SUITE 211

±2,917 RSF

FOR LEASING INFO  
PLEASE CONTACT:

### SHEILA BALE

MANAGING DIRECTOR

+1 602 224 4454

sheila.bale@cushwake.com

### TOM WEINHOLD

MANAGING DIRECTOR

+1 602 224 4428

tom.weinhold@cushwake.com

### ERIKA ECKBLAD

SENIOR ASSOCIATE

+1 602 224 4451

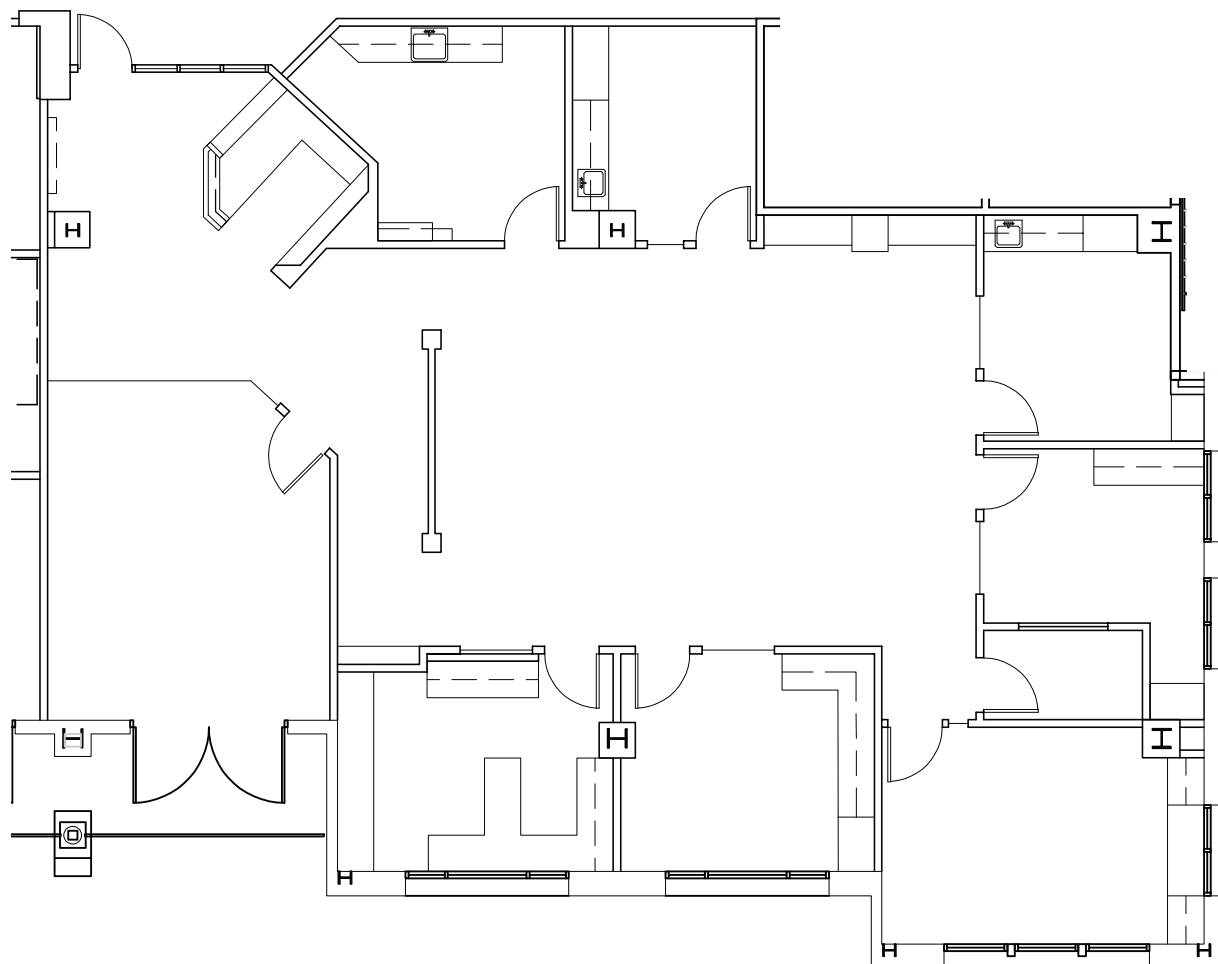
erika.eckblad@cushwake.com



2555 E Camelback Rd, Suite 400  
Phoenix, Arizona 85016  
Main +1 602 954 9000  
Fax +1 602 253 0528  
cushmanwakefield.com

PREMIER MEDICAL OFFICE SPACE

7231 E PRINCESS BLVD | SCOTTSDALE AZ 85255



©2025 Cushman & Wakefield. All rights reserved. The information contained in this communication is strictly confidential. This information has been obtained from sources believed to be reliable but has not been verified. NO WARRANTY OR REPRESENTATION, EXPRESS OR IMPLIED, IS MADE AS TO THE CONDITION OF THE PROPERTY (OR PROPERTIES) REFERENCED HEREIN OR AS TO THE ACCURACY OR COMPLETENESS OF THE INFORMATION CONTAINED HEREIN, AND SAME IS SUBMITTED SUBJECT TO ERRORS, OMISSIONS, CHANGE OF PRICE, RENTAL OR OTHER CONDITIONS, WITHDRAWAL WITHOUT NOTICE, AND TO ANY SPECIAL LISTING CONDITIONS IMPOSED BY THE PROPERTY OWNER(S). ANY PROJECTIONS, OPINIONS OR ESTIMATES ARE SUBJECT TO UNCERTAINTY AND DO NOT SIGNIFY CURRENT OR FUTURE PROPERTY PERFORMANCE.