


LAND
FOR SALE

12TH STREET
LEMOYNE, PA 17043



9.23
Acres

Daniel J. Alderman
dalderman@naicir.com | 717 761 5070

 1015 Mumma Road
Lemoyne, PA 17043
circommercial.com

NAICIR

Information concerning this offering comes from sources deemed reliable, but no warranty is made as to the accuracy thereof, and it is submitted subject to errors, omissions, change of price or other conditions, prior sale or lease, or withdrawal without notice. All sizes approximate. PA License #RB024320A

12TH STREET

PROPERTY DETAILS

FOR SALE
\$3,500,000

OFFERING SUMMARY

Sale Price	\$3,500,000
Real Estate Tax	\$6,438.74
Lot Size	9.23 Acres

PROPERTY SUMMARY

Address	12th Street Lemoyne, PA 17043
Municipality	Lemoyne Borough
County	Cumberland
Tax Parcel #	12-21-0269-052

PROPERTY DESCRIPTION

One of the last building lots in the Lemoyne Square/Camp Hill Corporate Center area. Terrific location in the heart of the business community without all the congestion.

PROPERTY HIGHLIGHTS

- 9.23 acres available in Lemoyne Square/Camp Hill Corporate Center area
- Central location with easy access to downtown Harrisburg
- Zoning permits professional offices, medical, and multi-family residential

LAND INFORMATION

838.8' of frontage on 12th Street

Flood zone X


Drainageway may be in the northeast corner of the property.

UTILITIES & ZONING

Water	Public
Sewer	Public
Zoning	OR - Office Residential Zoning; permits professional offices, medical, multi-family dwelling, etc.
Zoning Description	Check zoning ordinance for a complete list of permitted uses.

Daniel J. Alderman
dalderman@naicir.com | 717 761 5070

Information concerning this offering comes from sources deemed reliable, but no warranty is made as to the accuracy thereof, and it is submitted subject to errors, omissions, change of price or other conditions, prior sale or lease, or withdrawal without notice. All sizes approximate. PA License #RB024320A

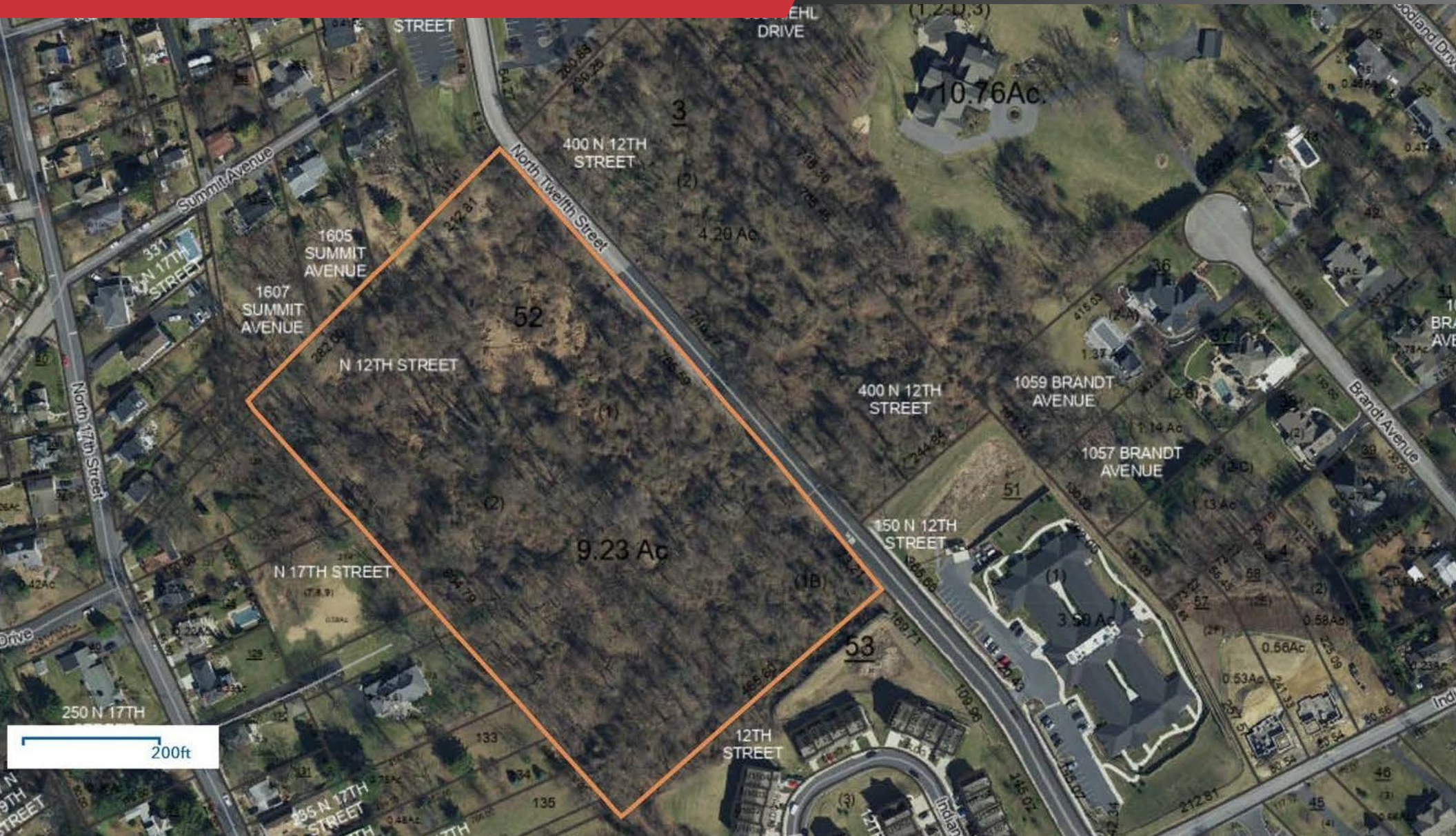
 1015 Mumma Road
Lemoyne, PA 17043
circommercial.com

NAICIR

12TH STREET

TAX MAP

FOR SALE
\$3,500,000



Daniel J. Alderman
dalderman@naicir.com | 717 761 5070

Information concerning this offering comes from sources deemed reliable, but no warranty is made as to the accuracy thereof, and it is submitted subject to errors, omissions, change of price or other conditions, prior sale or lease, or withdrawal without notice. All sizes approximate. PA License #RB024320A

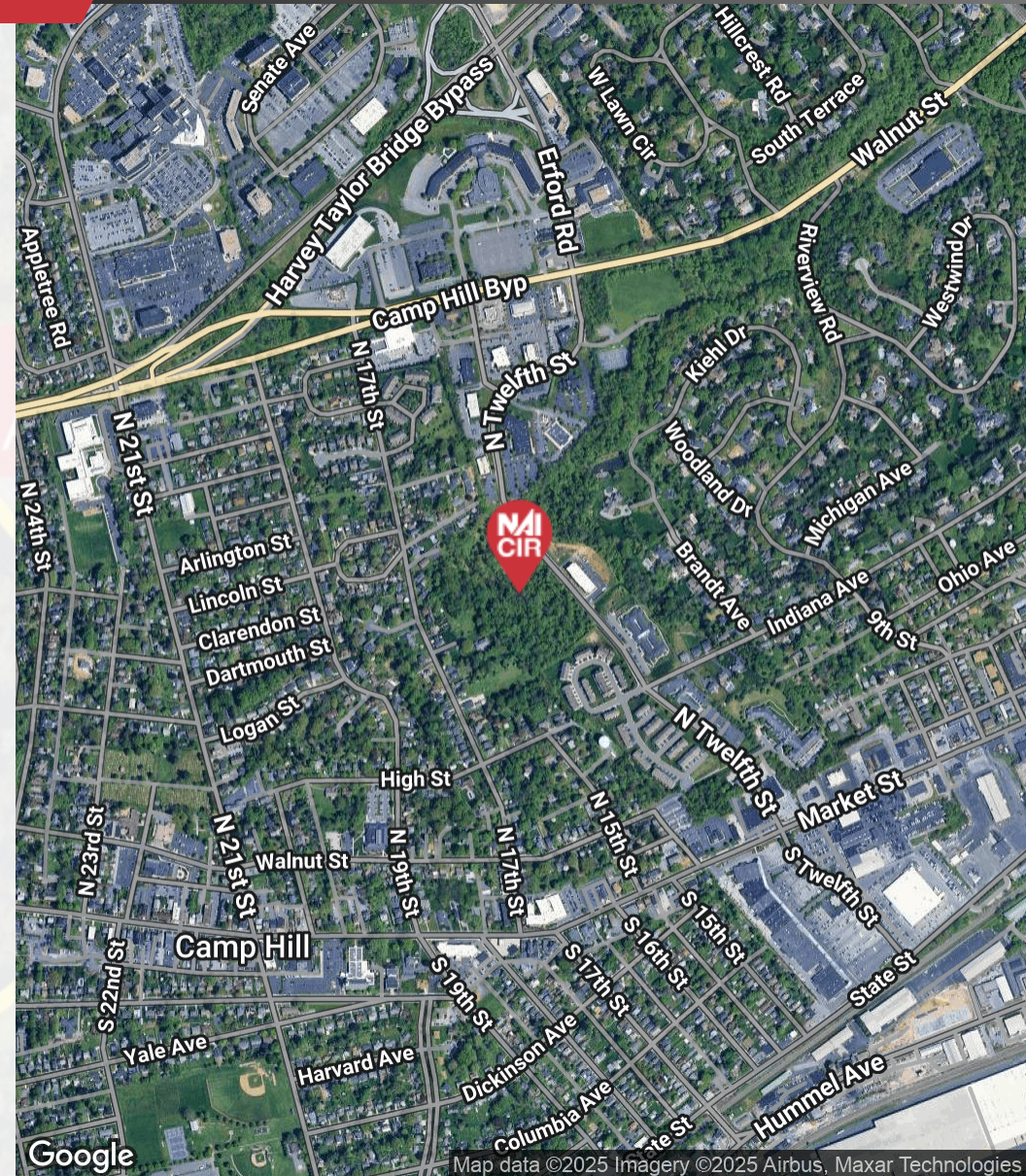
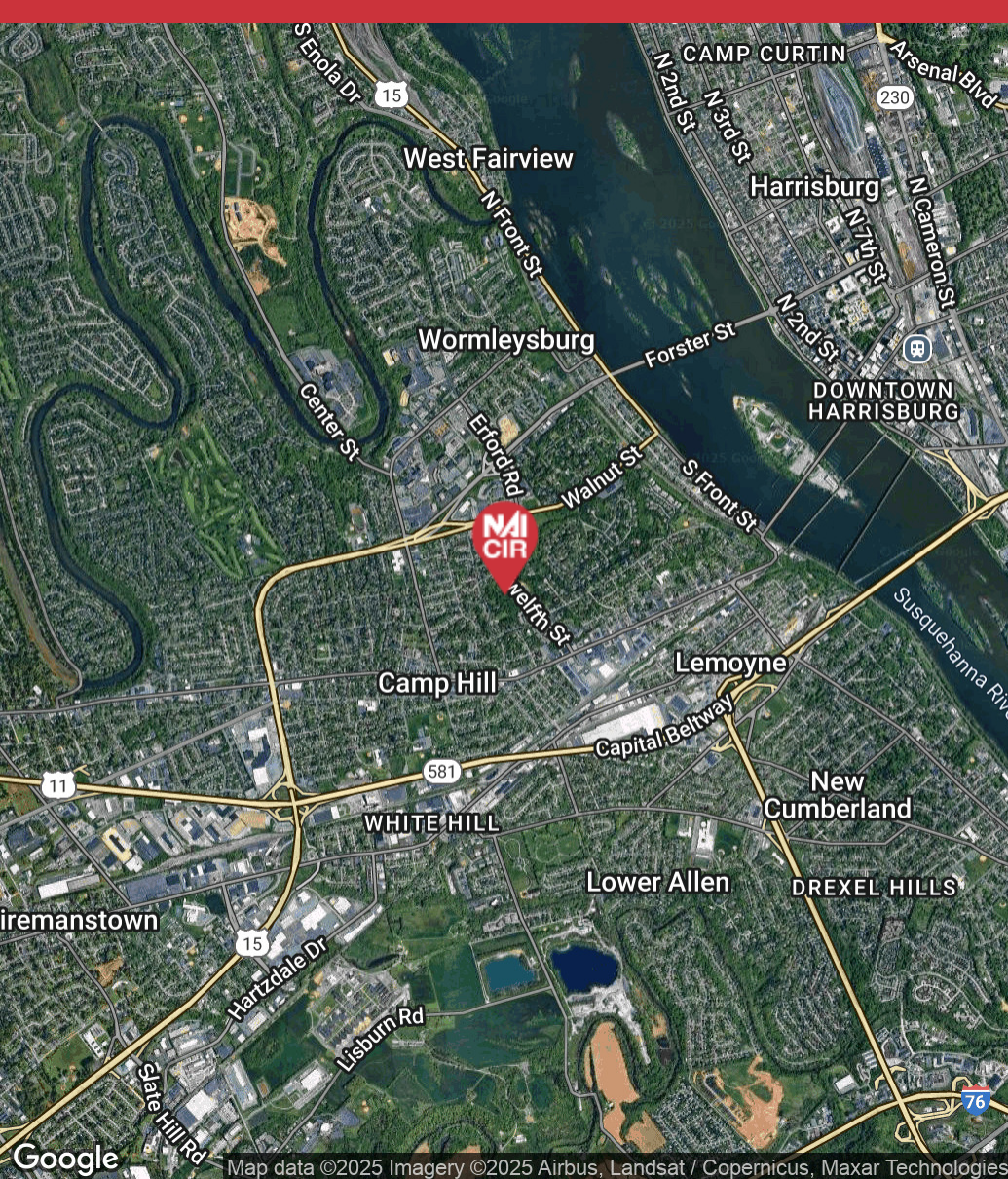
1015 Mumma Road
Lemoyne, PA 17043
circommercial.com

NAICIR

12TH STREET

LOCATION MAP

FOR SALE
\$3,500,000



Daniel J. Alderman
dalderman@naicir.com | 717 761 5070

Information concerning this offering comes from sources deemed reliable, but no warranty is made as to the accuracy thereof, and it is submitted subject to errors, omissions, change of price or other conditions, prior sale or lease, or withdrawal without notice. All sizes approximate. PA License #RB024320A

1015 Mumma Road
Lemoyne, PA 17043
circommercial.com

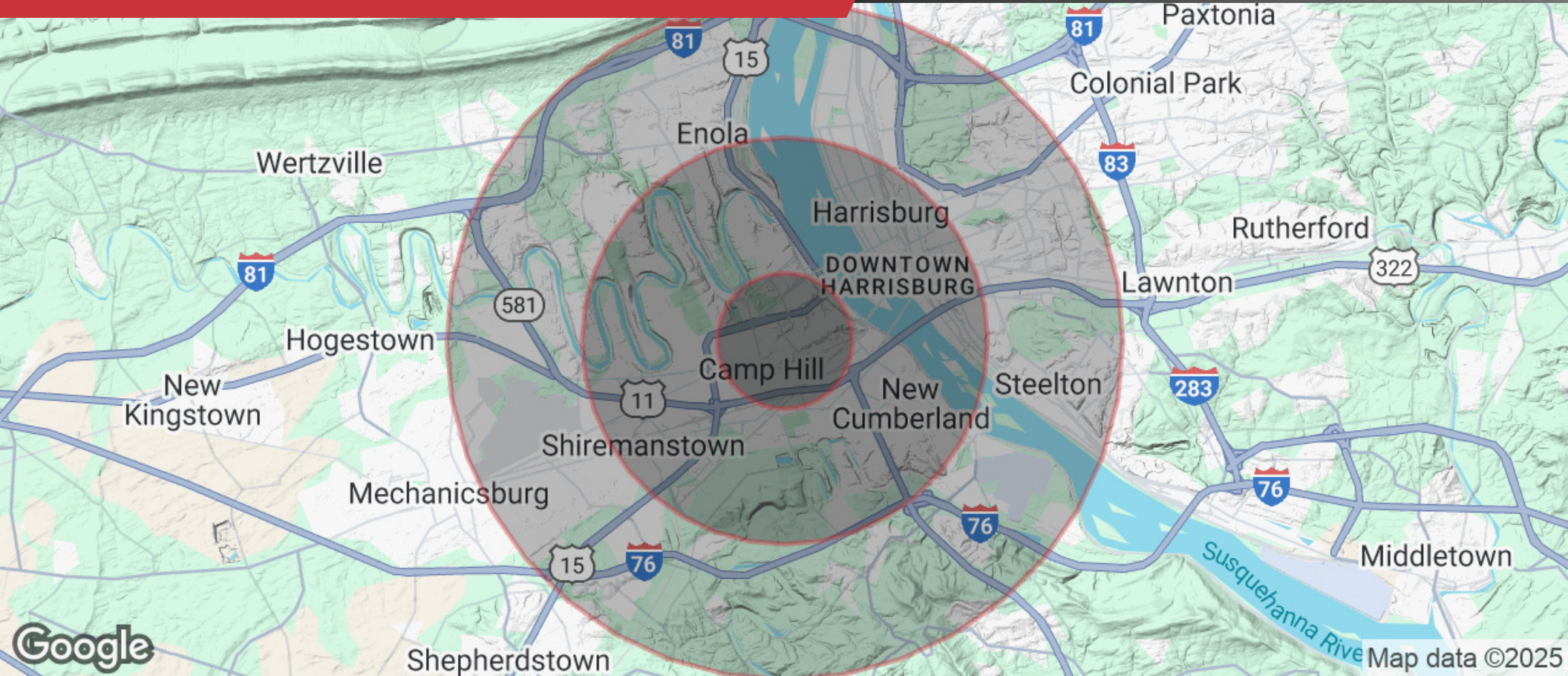


12TH STREET

DEMOGRAPHICS

FOR SALE

\$3,500,000



POPULATION

1 MILE	3 MILES	5 MILES
10,200	78,598	178,358



HOUSEHOLDS

1 MILE	3 MILES	5 MILES
4,718	34,744	75,047



INCOME

1 MILE	3 MILES	5 MILES
\$67,815	\$63,079	\$62,364

Daniel J. Alderman

dalderman@naicir.com | 717 761 5070

Information concerning this offering comes from sources deemed reliable, but no warranty is made as to the accuracy thereof, and it is submitted subject to errors, omissions, change of price or other conditions, prior sale or lease, or withdrawal without notice. All sizes approximate. PA License #RB024320A



1015 Mumma Road
Lemoyne, PA 17043
circommercial.com

NAICIR