

12594 W. Explorer Drive, Suite 100
Boise, Idaho 83713

For Sale Offering

- \$1,250,000
- Existing Lease in place

For Lease Offering

- Lease Rate: \$19.00 SF/year
- Lease Type: NNN
- Building Size: ± 4,580 sf
- Available Space: ± 2,626 sf
- Lot Size: ± 0.531 Acres
- Zoning: T-1D

Lease Highlights:

- Located in West Boise's Boise Research Center
- Suite comes fully furnished
- Ample on-site parking- 4 spaces per 1,000 psf
- Excellent visibility to Garden City, Boise, Meridian, and Eagle
- Contact agents for showing instructions

| Demographics | 1 Mile | 3 Miles | 5 Miles |
|--------------------------|-----------|----------|----------|
| Total Households | 2,963 | 32,481 | 76,731 |
| Total Population | 7,050 | 81,399 | 194,075 |
| Average HH Income | \$141,334 | \$95,066 | \$90,476 |

For More Information

Anmol Rattan

O: 208 435 0782
ar@naiselect.com

Greg Picard, CCIM

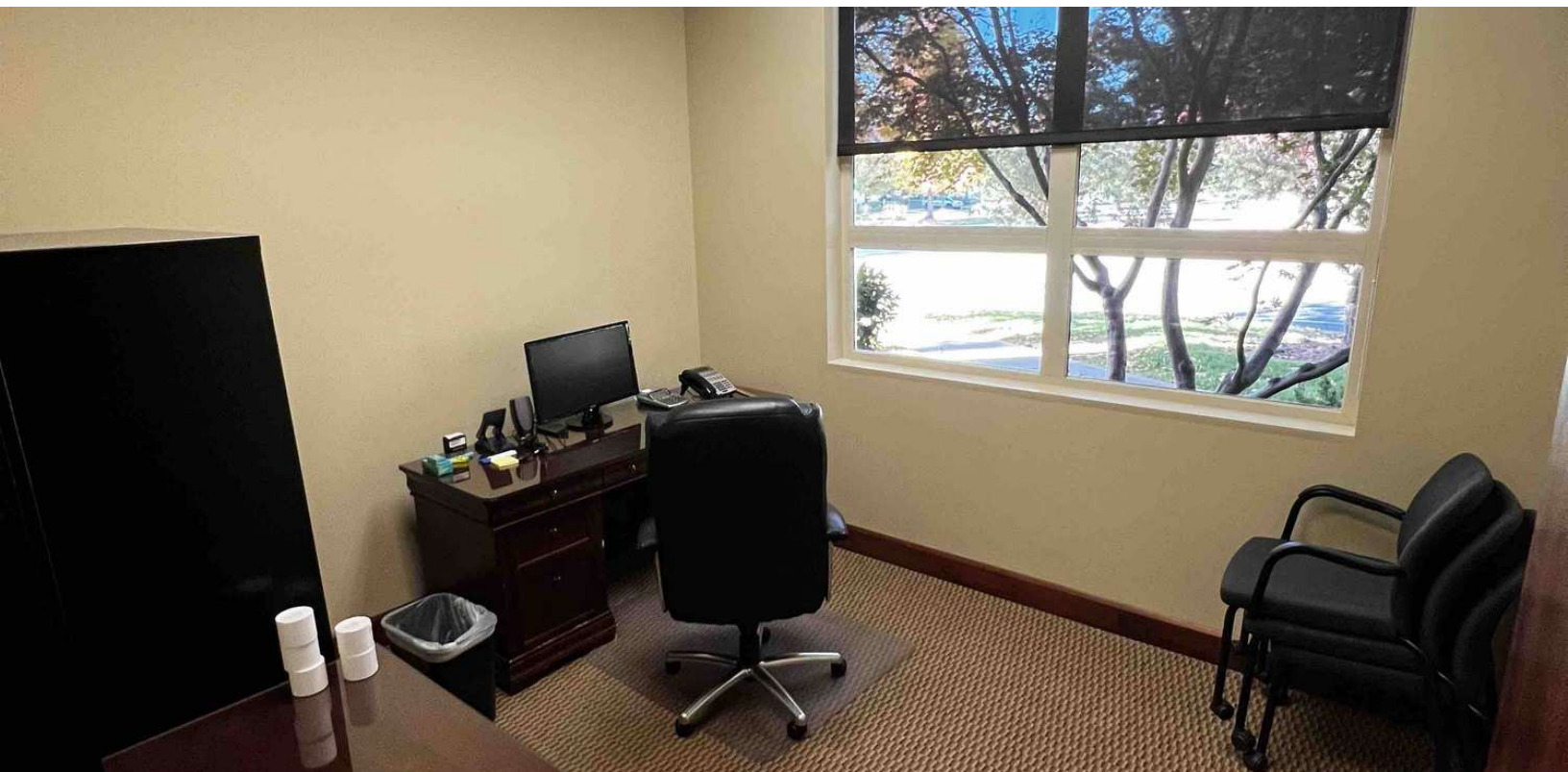
O: 208 229 2020
greg@naiselect.com



Boise Research Center Office

FOR SALE | \$1,250,000

FOR LEASE: ±2,626 SF | \$19.00 SF/yr



This information was obtained from sources believed reliable but cannot be guaranteed and is subject to change at any time. Any opinions or estimates are used for example only.

5571 N. Glenwood St.
Boise, ID 83714
208 229 2020 tel
naiselect.com

