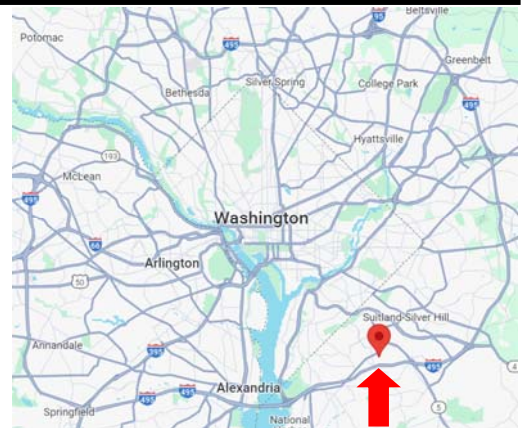


4743 Clifton Rd & 4630 St Barnabas Rd

Temple Hills, MD 20748

Property Information:

- ◆ 2 Parcels being sold together: Totaling 2.33 acres
- ◆ Zoned IE: Industrial, Employment allows for MANY uses, including vehicular sales & repairs
- ◆ Tax Accounts 0493734 and 0649590
- ◆ Located inside I95/495, approximately 2 miles from the Beltway
- ◆ 6,720 SF Building on the Clifton Rd parcel, with water and sewer service
- ◆ Both properties are currently being used to store 300 cars. All equipment & inventory is negotiable.
- ◆ 1 drive in door in operation, 2 additional loading dock doors would be available.
- ◆ Highly desired zoning— rarely available!



Leo Bruso, SIOR

LeoBruso@LandCommercial.com

Direct: 301-952-9705

Carrie J. Shearer, Broker

CarrieShearer@LandCommercial.com

Direct: 301-952-8433

14416 Old Mill Road, Suite 201

Upper Marlboro, MD 20772

Main: 301-952-9700

www.LandCommercial.com

Note: The information contained within this publication has been obtained from sources believed reliable. While we believe it is accurate, we make no guarantees, warranties or representations as to its accuracy.



LAND & COMMERCIAL, INC.

Serving Maryland's Real Estate Needs Since 1974

Entry View



Note: The information contained within this publication has been obtained from sources believed reliable. While we believe it is accurate, we make no guarantees, warranties or representations as to its accuracy.

14416 Old Mill Road, Suite 201

Upper Marlboro, MD 20772

Main: 301-952-9700

www.LandCommercial.com



LAND & COMMERCIAL, INC.

Serving Maryland's Real Estate Needs Since 1974

Assessory Building



Note: The information contained within this publication has been obtained from sources believed reliable. While we believe it is accurate, we make no guarantees, warranties or representations as to its accuracy.

14416 Old Mill Road, Suite 201
Upper Marlboro, MD 20772
Main: 301-952-9700

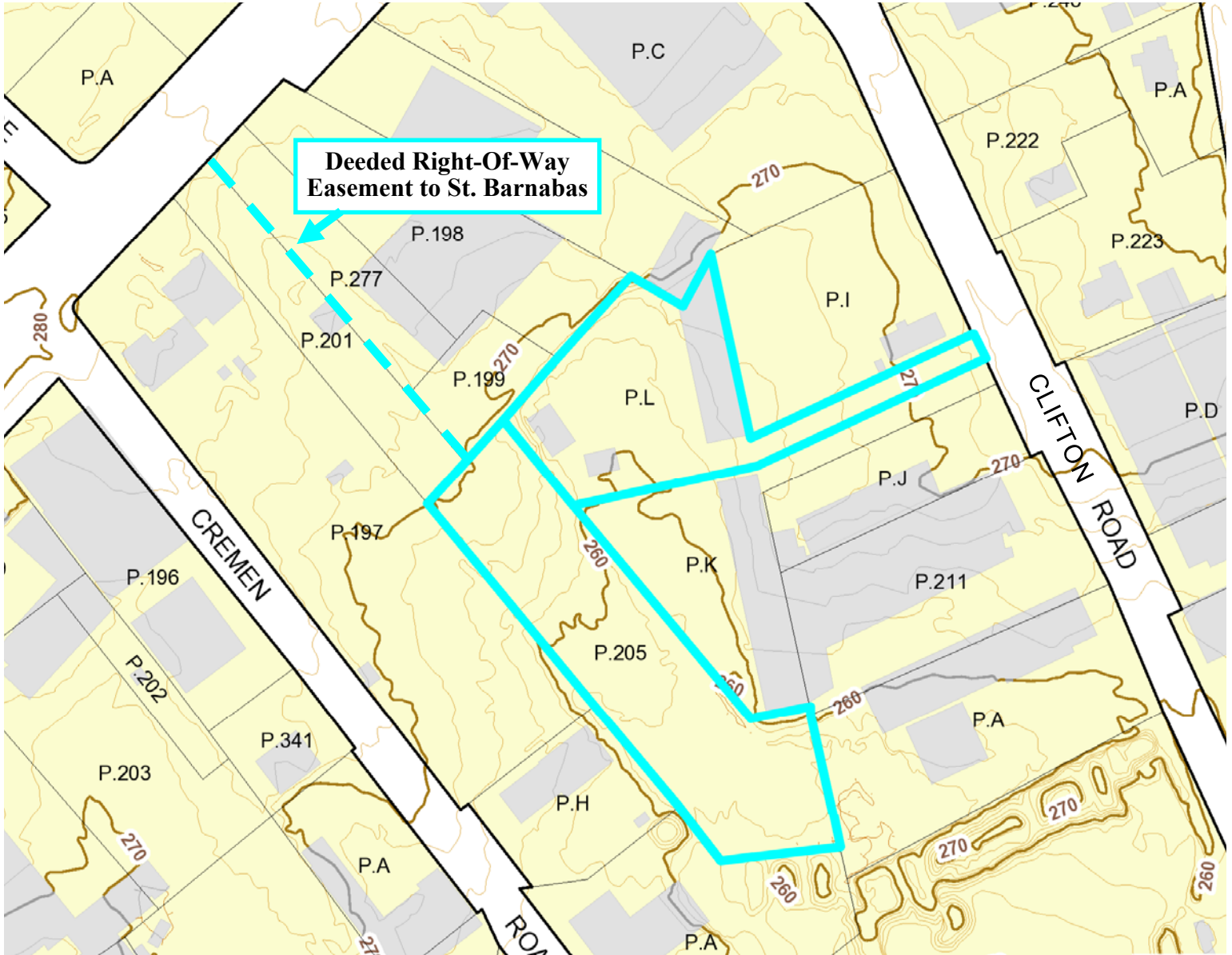
www.LandCommercial.com



LAND & COMMERCIAL, INC.

Serving Maryland's Real Estate Needs Since 1974

Topographic View



Note: The information contained within this publication has been obtained from sources believed reliable. While we believe it is accurate, we make no guarantees, warranties or representations as to its accuracy.

14416 Old Mill Road, Suite 201

Upper Marlboro, MD 20772

Main: 301-952-9700

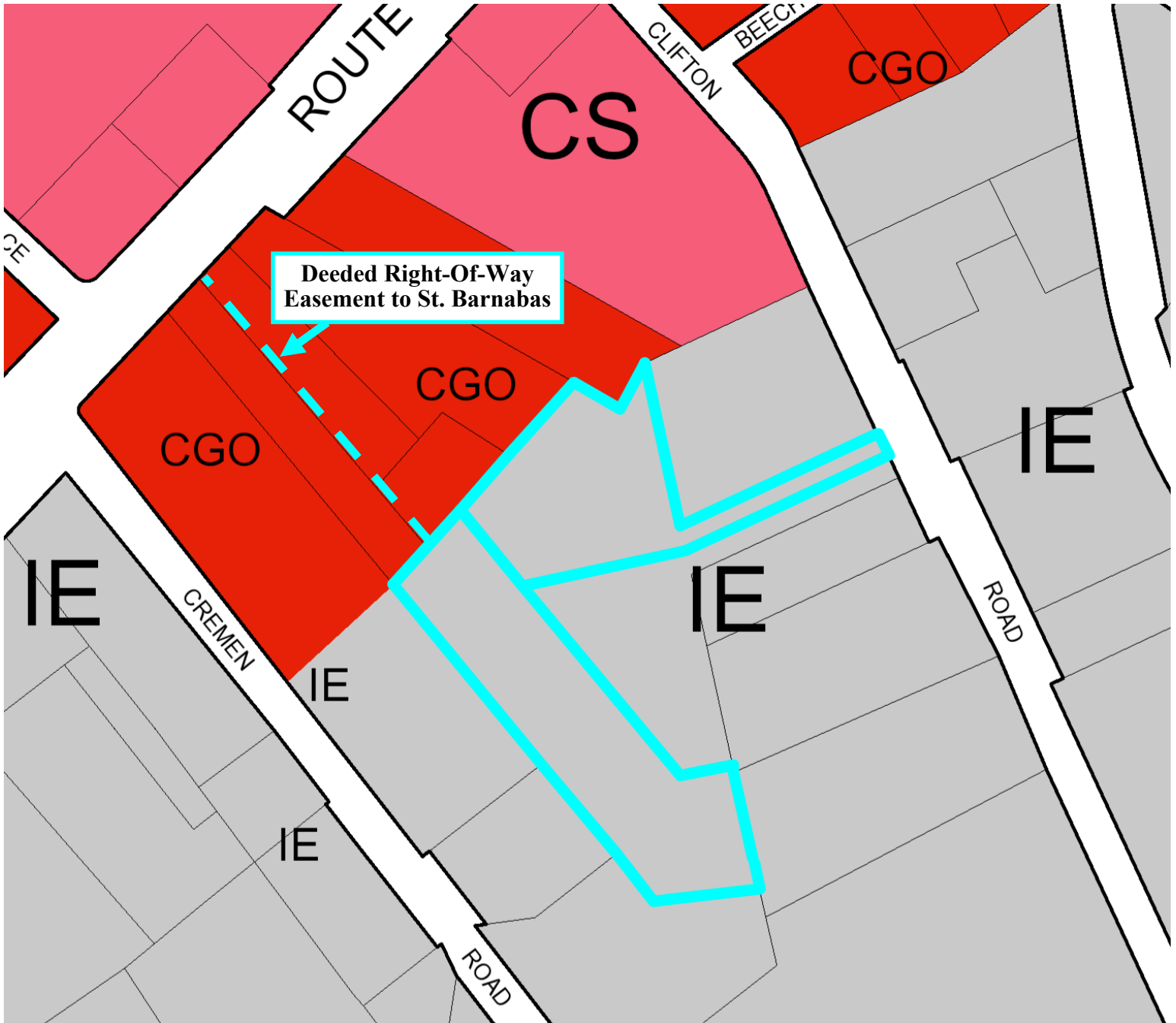
www.LandCommercial.com



LAND & COMMERCIAL, INC.

Serving Maryland's Real Estate Needs Since 1974

Zoning



Note: The information contained within this publication has been obtained from sources believed reliable. While we believe it is accurate, we make no guarantees, warranties or representations as to its accuracy.

14416 Old Mill Road, Suite 201
Upper Marlboro, MD 20772
Main: 301-952-9700
www.LandCommercial.com