

601 S FAIRFAX AVENUE

NEWLY CONSTRUCTED RETAIL SPACE ON FAIRFAX AVE ACROSS FROM LACMA



JARED SWEDELSON

Vice President
d: 818-742-1632
m: 818-644-7597
jswedelson@naicapital.com
Cal DRE Lic #02105146

NAI CAPITAL - WEST LOS ANGELES

11835 W. Olympic Blvd., Suite 700E
Los Angeles, CA 90064
d: 310-806-6100
f: 310-806-6101
www.naicapital.com

Property Details



Available Spaces

Unit 1:	3,428 SF	\$4.25/SF NNN
Unit 2:	2,164 SF	\$3.95/SF NNN
Unit 3:	2,305 SF	\$3.95/SF NNN
Unit 4:	3,261 SF	\$3.95/SF NNN
Unit 5:	2,000 SF	\$4.25/SF NNN

Total: ±2,000-13,000 SF

**Spaces adjacent can be continuous*

Space Features

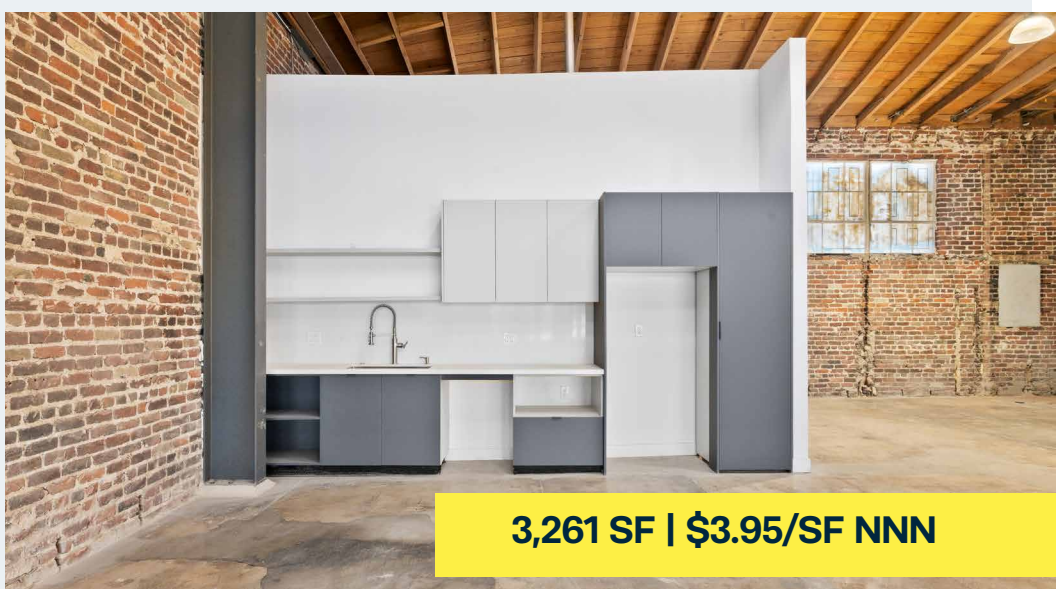
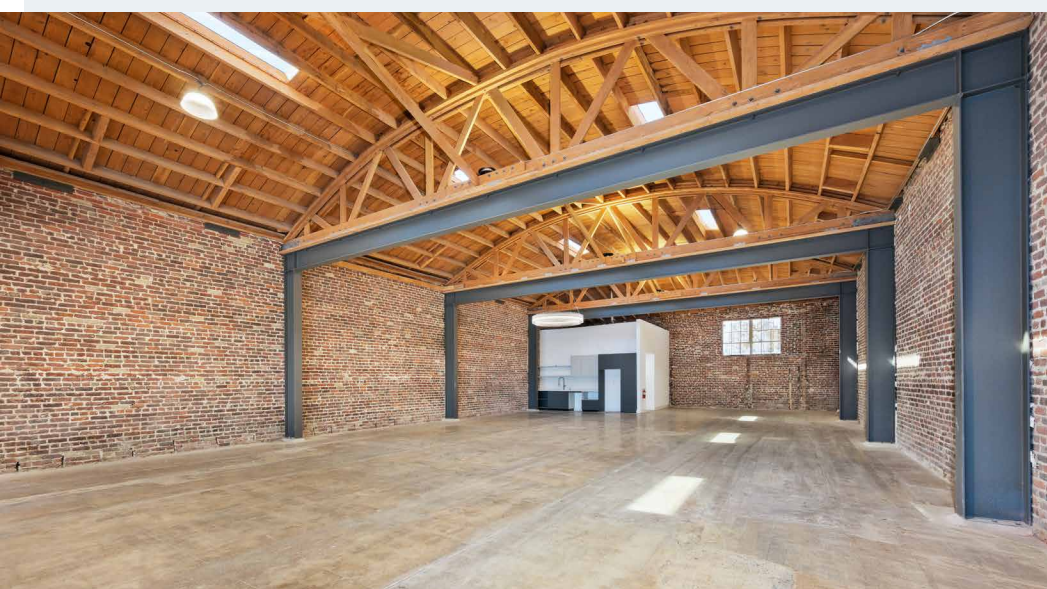
- New floor to ceiling glass store fronts
- Bow truss ceilings with skylights
- 12 ft high ceilings
- Ample onsite parking
- Dedicated roll up doors

Parking: 23 Spaces



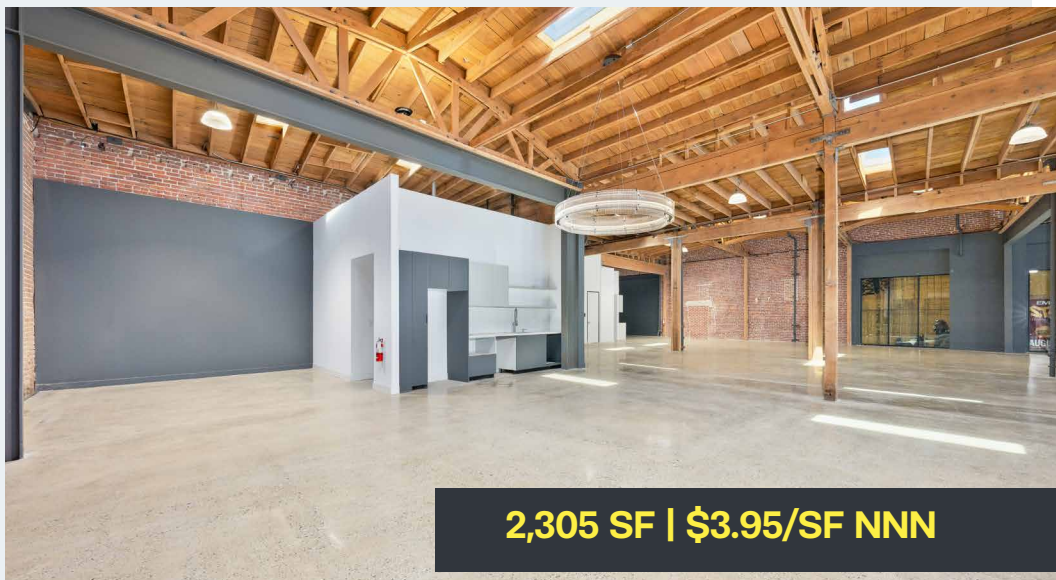
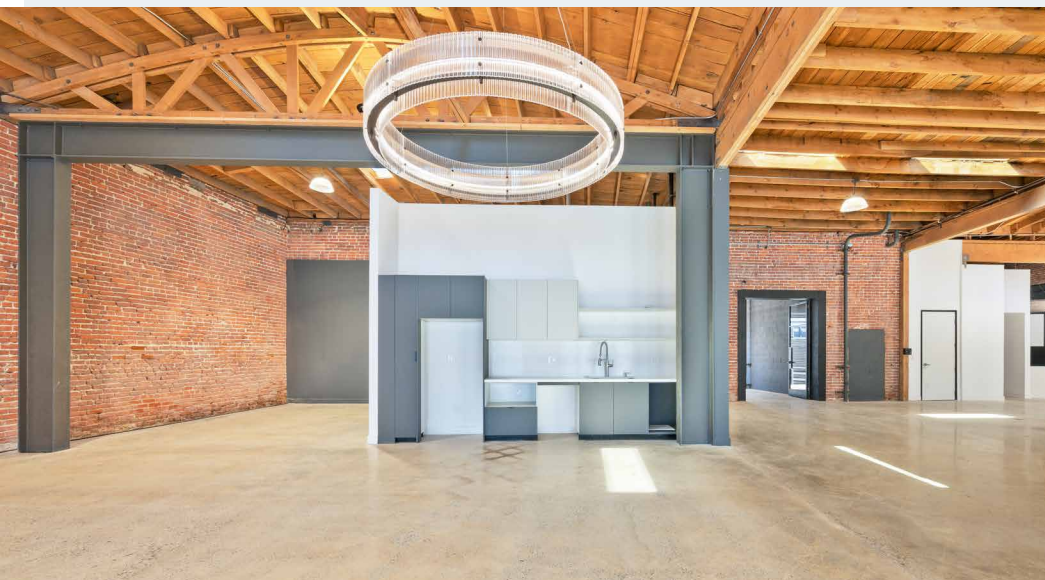


Unit 4 Photos



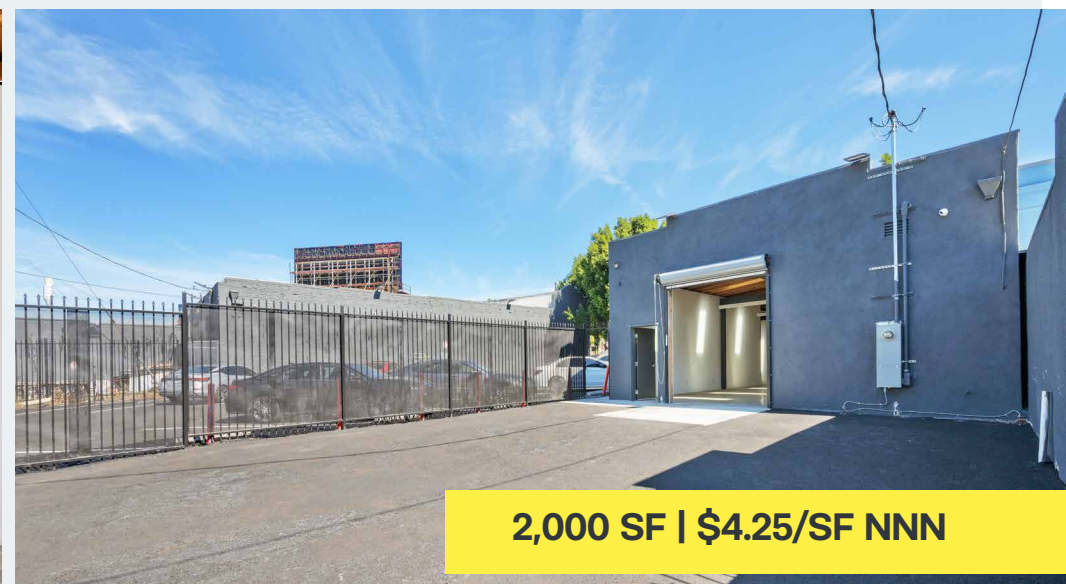
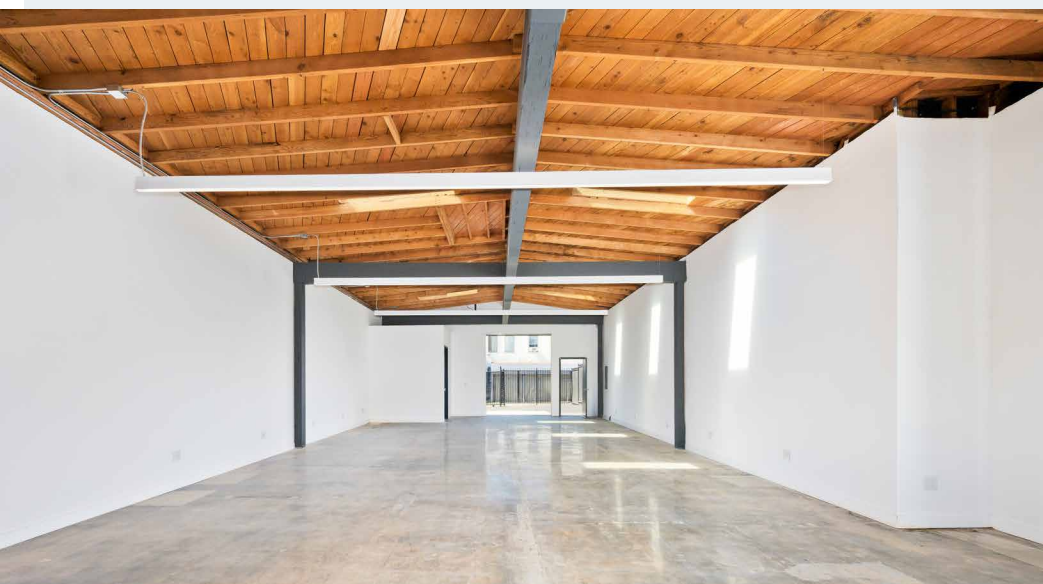
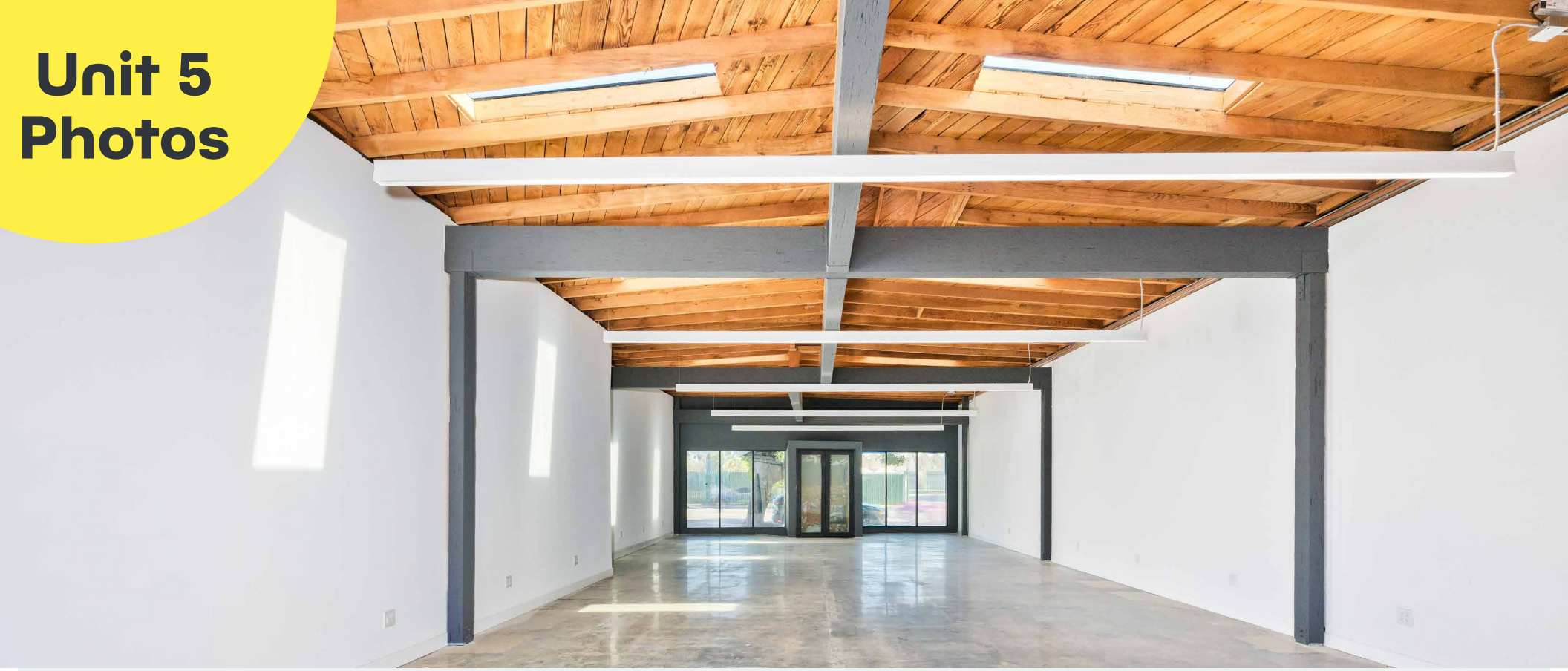
3,261 SF | \$3.95/SF NNN

Unit 3 Photos



2,305 SF | \$3.95/SF NNN

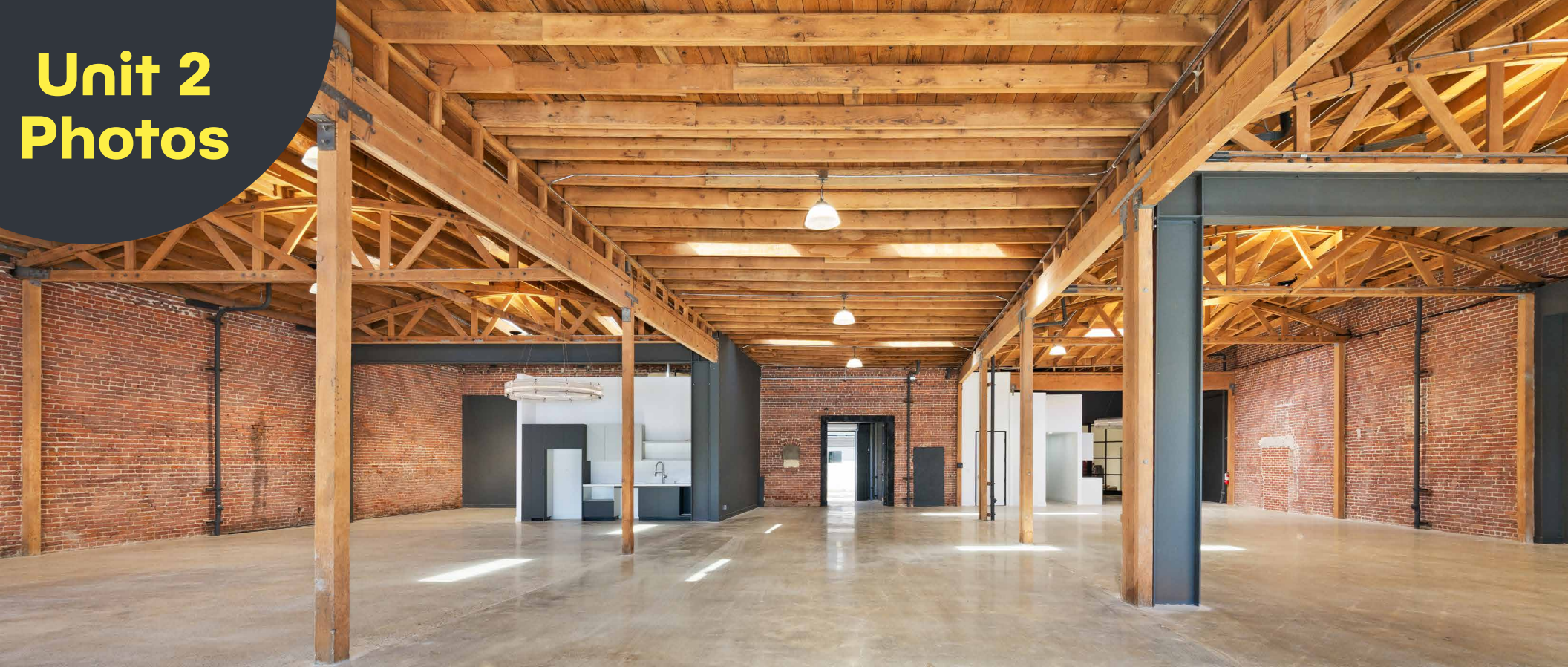
Unit 5 Photos



6 | 601 S FAIRFAX AVE, LOS ANGELES, CA

NAICapital
COMMERCIAL REAL ESTATE SERVICES, WORLDWIDE

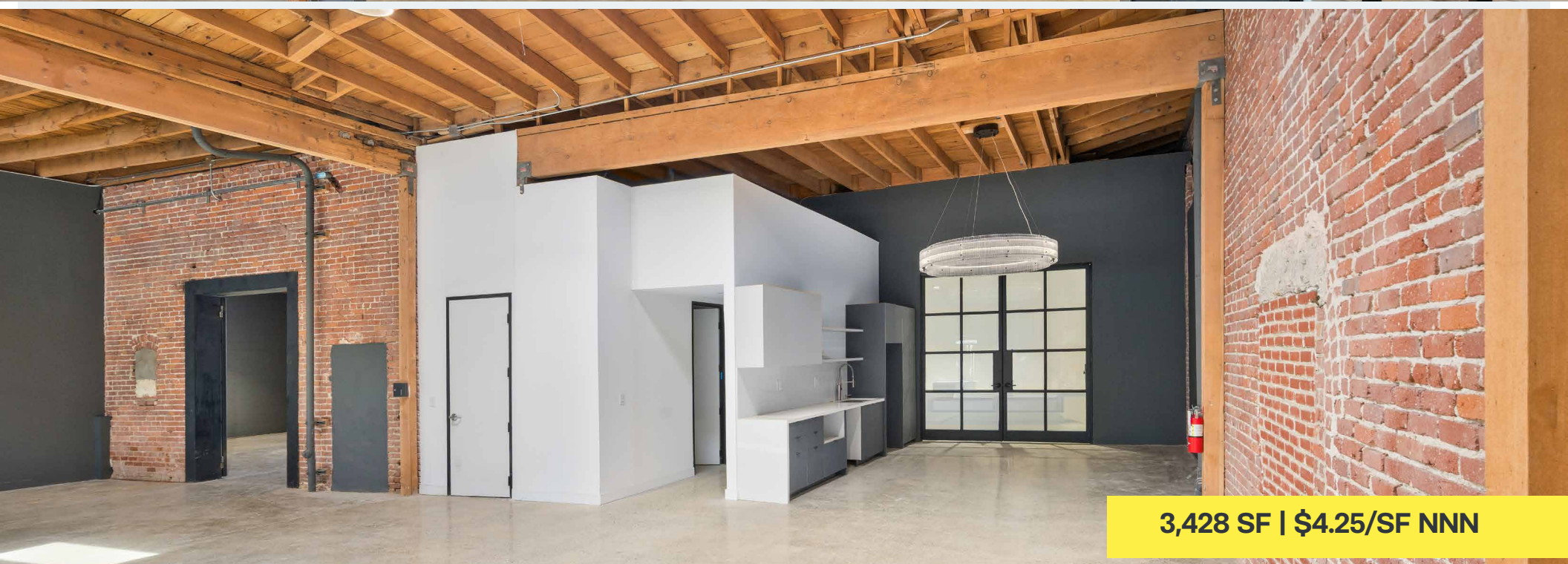
Unit 2 Photos



2,164 SF | \$3.95/SF NNN

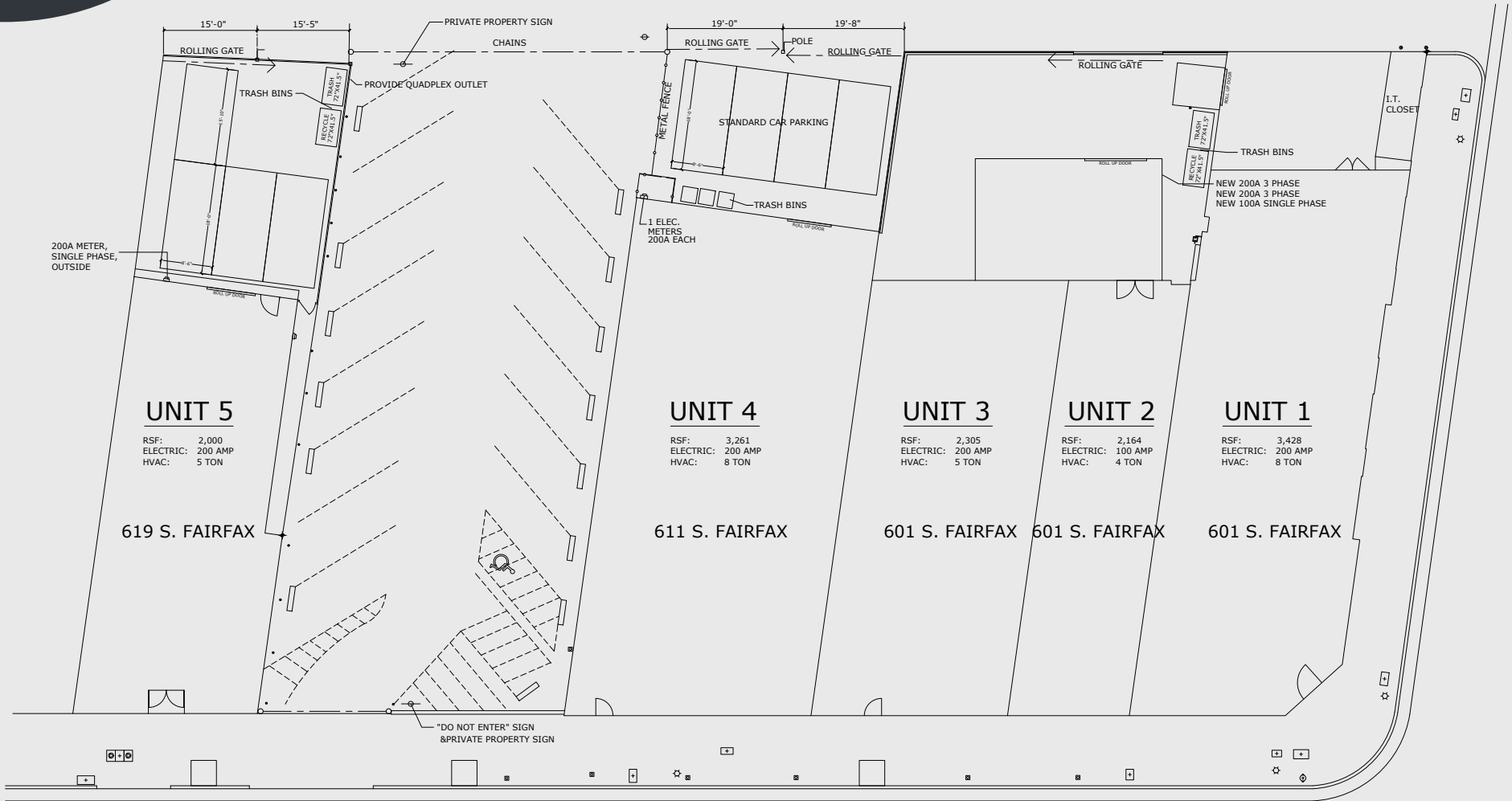
7 | 601 S FAIRFAX AVE, LOS ANGELES, CA

Unit 1 Photos



3,428 SF | \$4.25/SF NNN

Site Plan



Aerial Map



EREWTHON

LACMA

ACADEMY MUSEUM OF MOTION PICTURES

PETERSEN AUTOMOTIVE MUSEUM

Fanny's

WILSHIRE BLVD

W 6TH ST

601 S FAIRFAX AVE

PARK LABREA





LACMA

The Los Angeles County Museum of Art (LACMA) is the largest art museum in the western United States, located in Los Angeles. It houses over 150,000 works spanning ancient to modern times and features iconic outdoor installations like “Urban Light”. LACMA is currently partnering with Erewhon, for members attending previews of the new David Geffen Galleries designed by Peter Zumthor.

PETERSEN AUTOMOTIVE MUSEUM

The Petersen Automotive Museum is an automobile museum located on Wilshire Boulevard along Museum Row in the Miracle Mile neighborhood of Los Angeles. One of the world’s largest collections, the Petersen Automotive Museum is a nonprofit organization specializing in automobile history and related educational programs.



MUSEUM OF MOTION PICTURES

The Academy of Motion Pictures in Los Angeles is the premier US institution dedicated to the arts, sciences, and artists of moviemaking. Located in the historic Saban Building on Wilshire Blvd, it features immersive, multi-level exhibitions, a 1,000-seat theater in a glass sphere, and extensive collections of costumes, props, and film technology.

Contact Info

JARED SWEDELSON

Vice President
d: 818-742-1632
m: 818-644-7597
jswedelson@naicapital.com
Cal DRE Lic #02105146

NAI CAPITAL - WEST LOS ANGELES

11835 W. Olympic Blvd., Suite 700E
Los Angeles, CA 90064
d: 310-806-6100
f: 310-806-6101
www.naicapital.com

SIGNAGE



©NAI Capital Commercial, Inc. Content in this document may include AI generated or alerted text, images and/or analysis. No warranty, express or implied, is made as to the accuracy of the information contained herein. This information is submitted subject to errors, omissions, change of price, rental or other conditions, withdrawal without notice, and is subject to any special listing conditions imposed by our principals. Cooperating brokers, buyers, tenants and other parties who receive this document should not rely on it, but should use it as a starting point of analysis, and should independently confirm the accuracy of the information contained herein through a due diligence review of the books, records, files and documents that constitute reliable sources of the information described herein. Unedited images viewable at naicapital.com | Cal DRE Lic #02130474