

HUNTERSVILLE MEDICAL PAVILION I & II

9920 & 9930 KINCEY AVENUE
HUNTERSVILLE | NORTH CAROLINA



FOR LEASE

PAVILION I - 9920 KINCEY AVE

OVERVIEW

- 9920 Kincey Ave is a two-story medical office building
- Monument signage provides excellent visibility
- Ability to buildout a surgery center on the second floor
- Improvements include covered drop off, new gurney sized elevator, and new common areas
- Abundant parking
- Adjacent to Novant Health - Huntersville Medical Center
- Generous T.I. Allowance

[CLICK HERE TO EXPLORE](#)

CONTACT:

GREG MCINTOSH

d. 704-749-7248

c. 704-562-2153

greg@FlagshipHP.com

WILL ROBERTSON

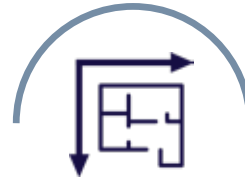
d. 704-996-5824

will@FlagshipHP.com



BUILDING AREA:

± 67,623 SF



TOTAL AVAILABLE SPACE:

2nd Floor: ± 18,877 RSF



LEASE RATE:

\$36.00/SF



LEASE TYPE:

Full Service



YEAR BUILT & RENOVATED:

2000/2024



PAVILION I FLOOR PLAN

9920 KINCEY AVE



SUITE 240B:
7,206 RSF

SUITE 240A:
5,391 RSF

SUITE 250:
2,334 RSF

SUITE 260:
3,946 RSF

TOTAL AVAILABLE:
18,877 RSF

PAVILION II - 9930 KINCEY AVE

OVERVIEW

- Three-story medical office building featuring a diverse tenant mix
- Monument signage provides excellent visibility
- Easy access to I-77
- Surrounded by ample retail and dining opportunities
- Located in a strong medical corridor
- Abundant parking
- Adjacent to Novant Health- Huntersville Medical Center
- Generous T.I. Allowance

[CLICK HERE TO EXPLORE](#)

CONTACT:

GREG MCINTOSH

d. 704-749-7248

c. 704-562-2153

greg@FlagshipHP.com

WILL ROBERTSON

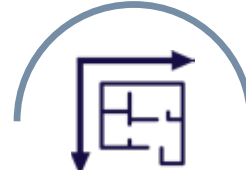
d. 704-996-5824

will@FlagshipHP.com



BUILDING AREA:

±101,500 SF



TOTAL AVAILABLE SPACE:

Suite 175: ± 2,295 SF

3rd Floor: ± 2,953 SF



LEASE RATE:

\$36.00/SF



LEASE TYPE:

Full Service



YEAR BUILT & RENOVATED:

2000/2024



PAVILION II FLOOR PLAN

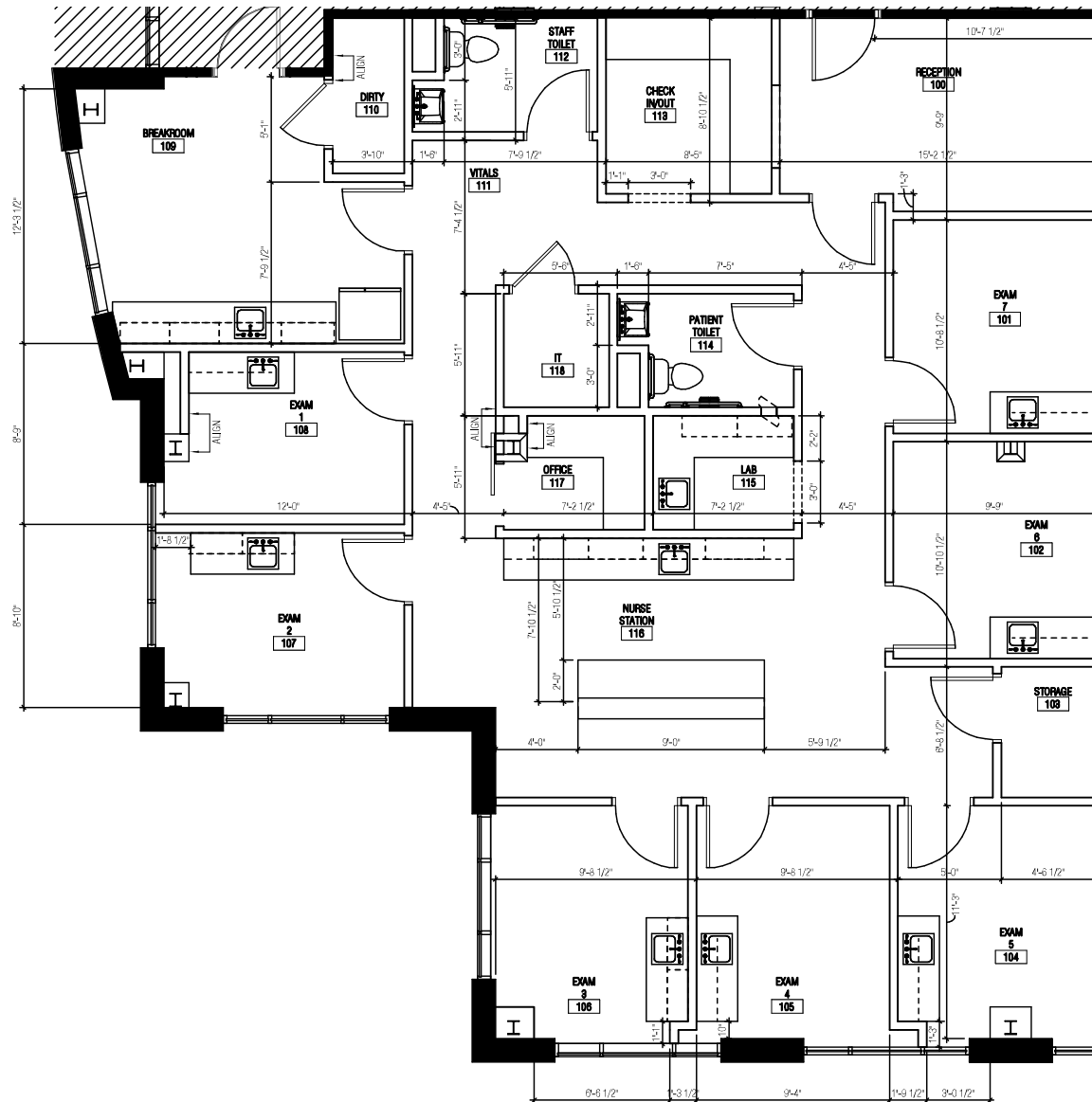
9930 KINCEY AVE



SUITE 175:
± 2,295 RSF

PAVILION II FLOORPLAN

SUITE 175- 2,295 SF, 9930 KINCEY AVE



PAVILION II FLOORPLAN

3rd FLOOR, 9930 KINCEY AVE



AREA MAP

