



DK COMMERCIAL

CLASS A OWNER/USER BUILDING FOR SALE

EL DORADO BUSINESS CAMPUS
2950 E. GOLDSTONE DR.
MERIDIAN, ID 83642



FOR SALE

\$6,700,000

Location:

SW Corner of Eagle and Overland Roads

Building Size:

Building Size: 30,183 SF

Parking:

5/1000

Lot Size:

2.686 acres

Year Built:

2003

Zoning:

CC

DEBBIE MARTIN

debbie@dkcommercial.com | 208-850-5009 | dkcommercial.com

1880 S. Cobalt Point Way, Ste 300
Meridian, ID 83642

COMMERCIAL
REAL ESTATE



THE INFORMATION CONTAINED HEREIN HAS BEEN OBTAINED BY RELIABLE SOURCES, BUT IS NOT GUARANTEED.



AVAILABLE SPACE

EL DORADO BUSINESS CAMPUS

2950 E. GOLDSTONE DR.
MERIDIAN, ID 83642



PROPERTY HIGHLIGHTS

- No deferred maintenance
- Beautiful Single Story Class A Office Building
- A few offices with open area for cubicles
- Built for maximum flexibility for changing layout
- Very efficient layout with a core, restrooms, mail room, breakroom in the center, and training room.
- Infrastructure for Security in place
- Secure front door with release from inside receptionist
- Both doors off of Reception area are secure with electronic entry
- Redundant fiber in building
- Easy Access off Eagle Road with a stop light and multiple access points into El Dorado Campus off of Overland & Eagle Road

DEBBIE MARTIN

debbie@dkcommercial.com | 208-850-5009 | dkcommercial.com

1880 S. Cobalt Point Way, Ste 300
Meridian, ID 83642

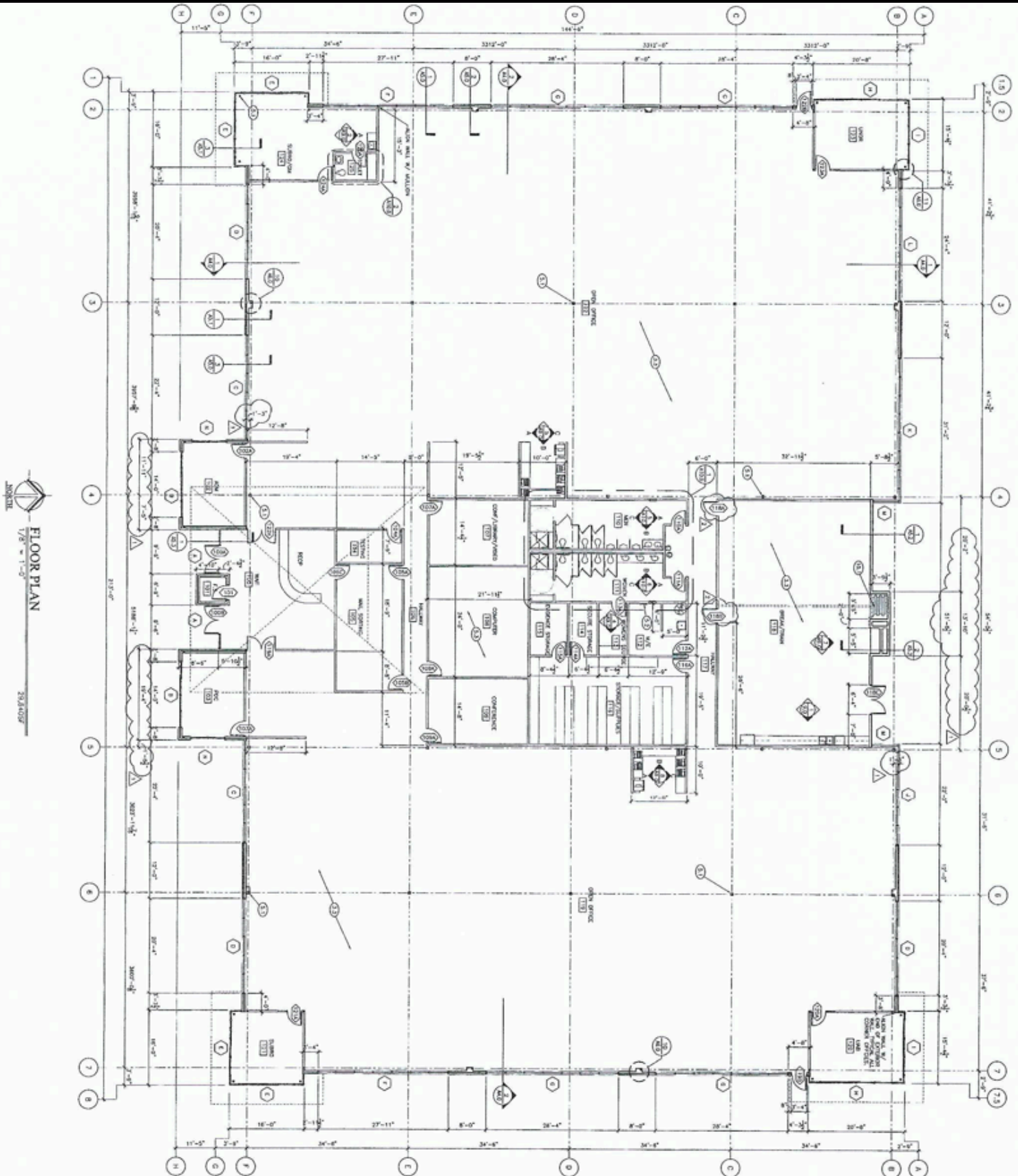
THE INFORMATION CONTAINED HEREIN HAS BEEN OBTAINED BY RELIABLE SOURCES, BUT IS NOT GUARANTEED.





DK COMMERCIAL

AVAILABLE SPACE EL DORADO BUSINESS CAMPUS 2950 E. GOLDSTONE DR. MERIDIAN, ID 83642



DEBBIE MARTIN

debbie@dkcommercial.com | 208-850-5009 | dkcommercial.com

1880 S. Cobalt Point Way, Ste 300

Meridian, ID 83642

THE INFORMATION CONTAINED HEREIN HAS BEEN OBTAINED BY RELIABLE SOURCES, BUT IS NOT GUARANTEED.

COMMERCIAL
REAL ESTATE





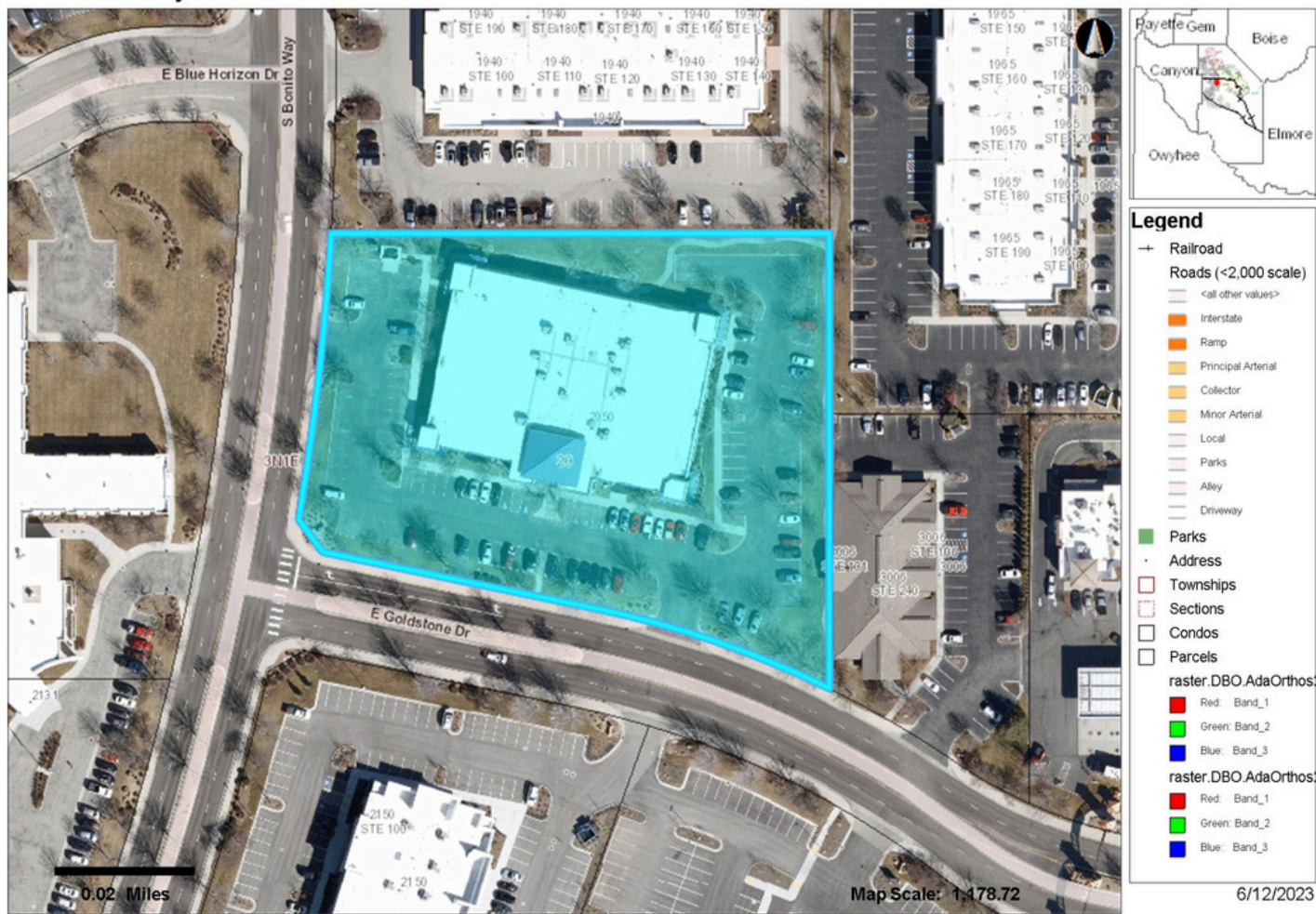
AVAILABLE SPACE

EL DORADO BUSINESS CAMPUS

2950 E. GOLDSTONE DR. MERIDIAN, ID 83642

Ada County Assessor

This map is a user generated static output from an Internet mapping site and is for general reference only. Data layers that appear on this map may or may not be accurate, current, or otherwise reliable. THIS MAP IS NOT TO BE USED FOR NAVIGATION OR LEGAL PURPOSES.



DEBBIE MARTIN

debbie@dkcommercial.com | 208-850-5009 | dkcommercial.com

1880 S. Cobalt Point Way, Ste 300
Meridian, ID 83642

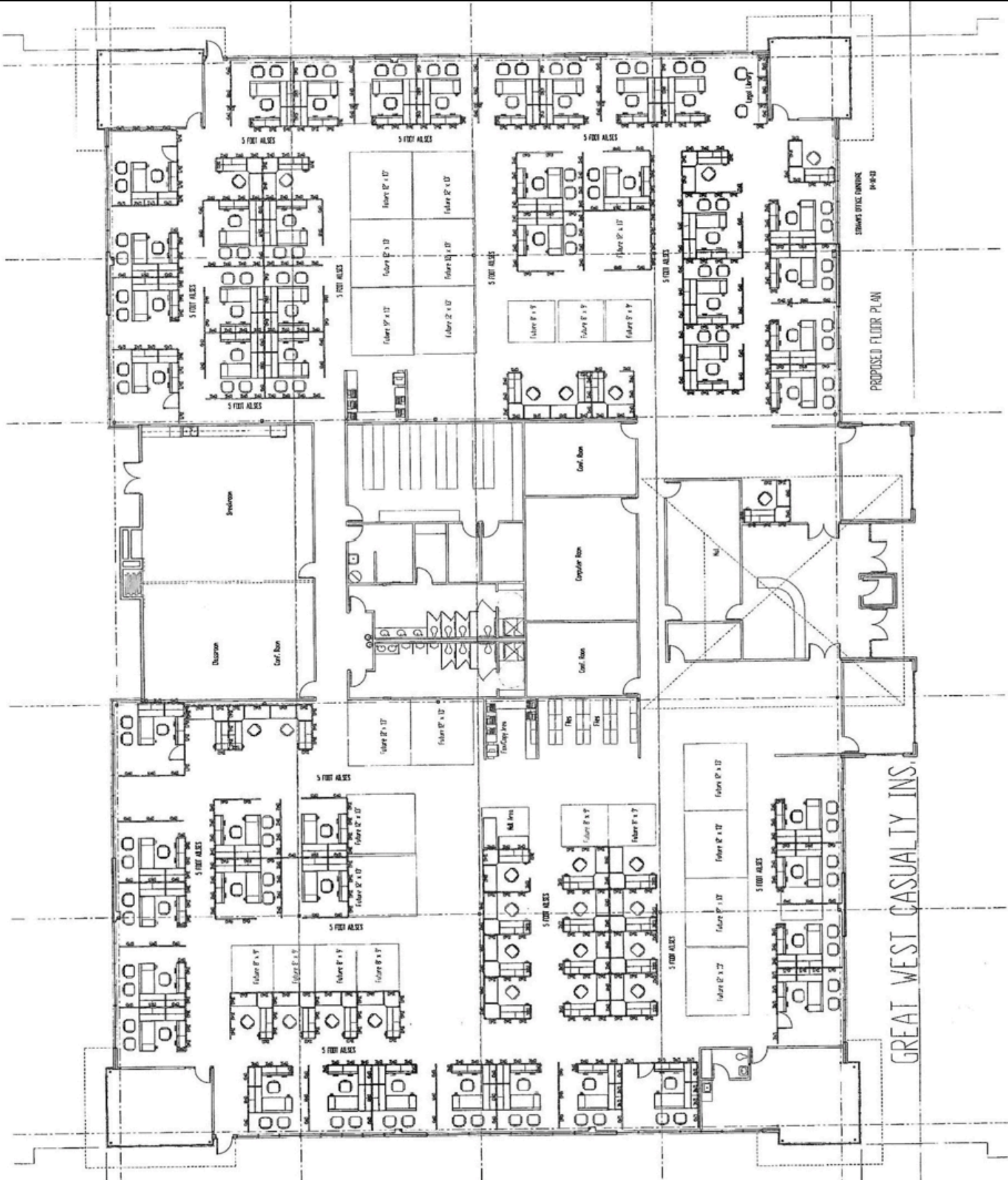
COMMERCIAL
REAL ESTATE





DK COMMERCIAL

AVAILABLE SPACE EL DORADO BUSINESS CAMPUS 2950 E. GOLDSTONE DR. MERIDIAN, ID 83642



DEBBIE MARTIN

debbie@dkcommercial.com | 208-850-5009 | dkcommercial.com
1880 S. Cobalt Point Way, Ste 300
Meridian, ID 83642

THE INFORMATION CONTAINED HEREIN HAS BEEN OBTAINED BY RELIABLE SOURCES, BUT IS NOT GUARANTEED.



NATURE / EQUIPMENT PLAN

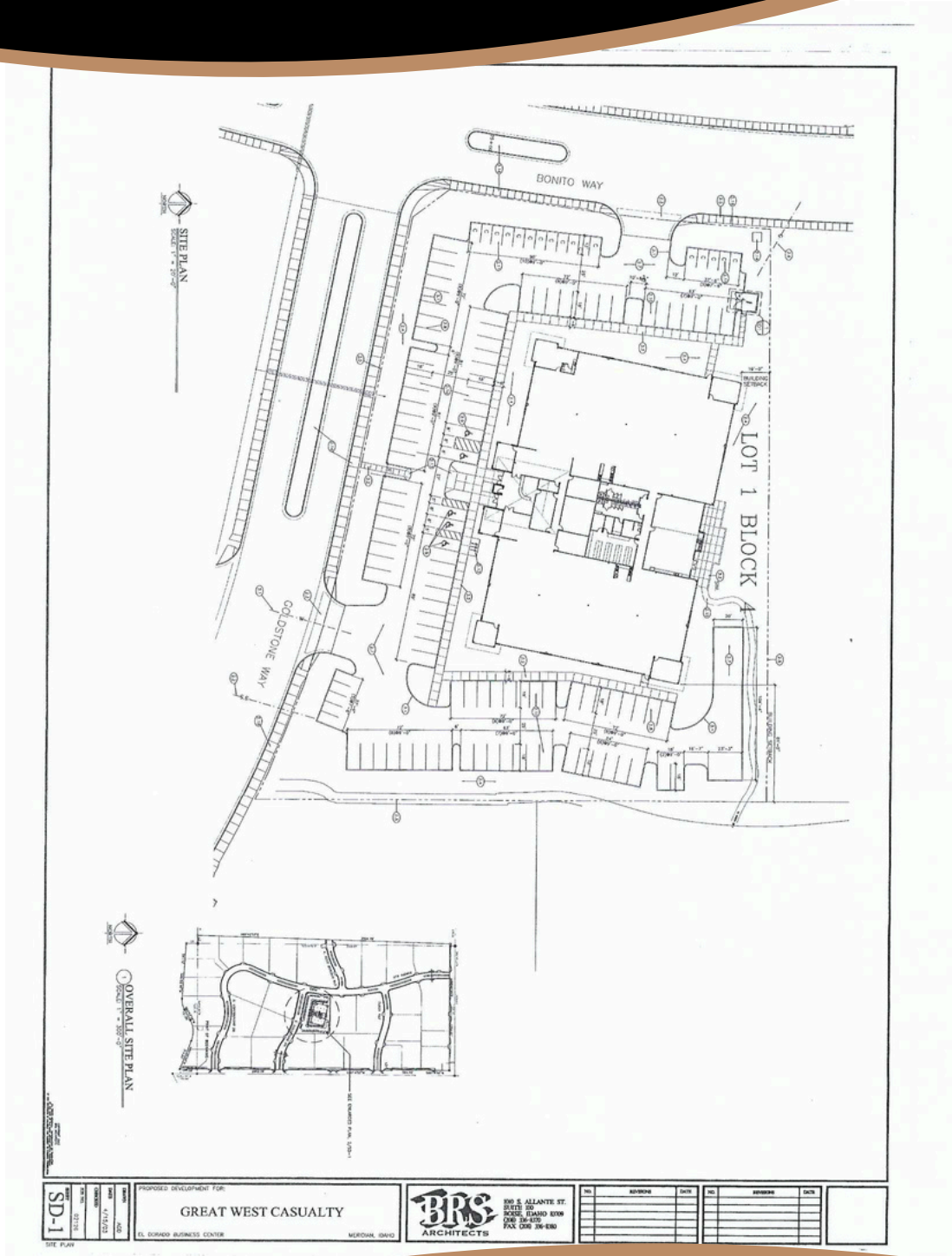


AVAILABLE SPACE

EL DORADO BUSINESS CAMPUS

2950 E. GOLDSTONE DR.

MERIDIAN, ID 83642



DEBBIE MARTIN

debbie@dkcommercial.com | 208-850-5009 | dkcommercial.com

1880 S. Cobalt Point Way, Ste 300
Meridian, ID 83642

THE INFORMATION CONTAINED HEREIN HAS BEEN OBTAINED BY RELIABLE SOURCES, BUT IS NOT GUARANTEED.



AVAILABLE SPACE

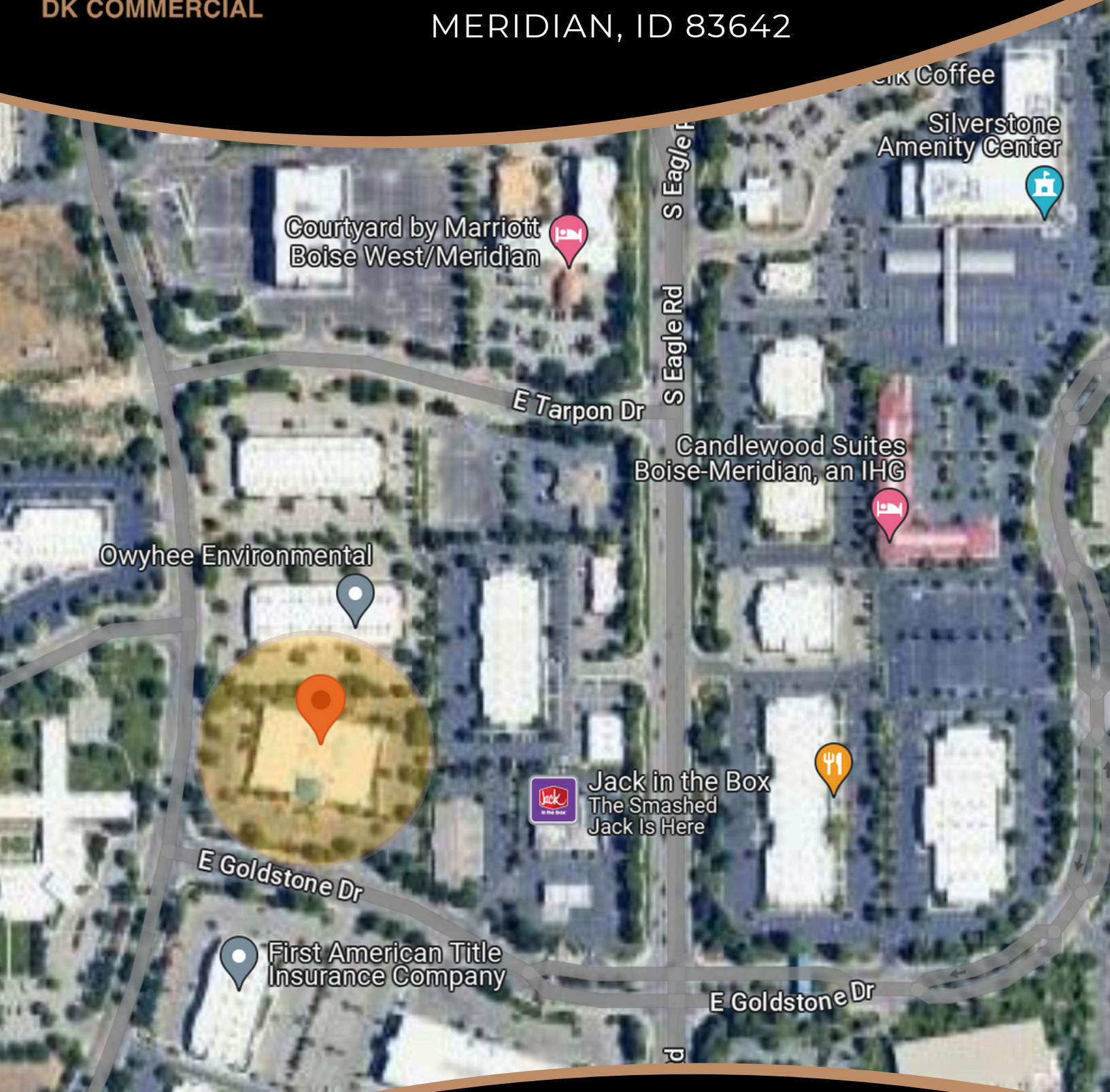
EL DORADO BUSINESS CAMPUS

2950 E. GOLDSTONE DR.

MERIDIAN, ID 83642



DK COMMERCIAL



DEBBIE MARTIN

debbie@dkcommercial.com | 208-850-5009 | dkcommercial.com

1880 S. Cobalt Point Way, Ste 300
Meridian, ID 83642

COMMERCIAL
REAL ESTATE



THE INFORMATION CONTAINED HEREIN HAS BEEN OBTAINED BY RELIABLE SOURCES, BUT IS NOT GUARANTEED.