



SUNFOREST I & II

Ideal HQ Location in Westshore's Eisenhower Corridor

- Sunforest Corporate Campus includes on-site day care and 360 apartment units
- Mix of suite sizes up to and including contiguous full floors for +/- 76,000 RSF
- 6.00/1,000 parking - surface and structured
- Building and monument signage opportunities
- Convenient access and visibility from both Veterans Expressway and Hillsborough Avenue
- Ease of commute from growing residential neighborhoods in Pasco County
- Minutes from Tampa International Airport
- Long-term, stable Ownership

Get more information

Clay Witherspoon

Managing Director | Principal

+1 813 444 0626

clay.witherspoon@avisonyoung.com

Laurie Hynes

Sr. Client Services Coordinator

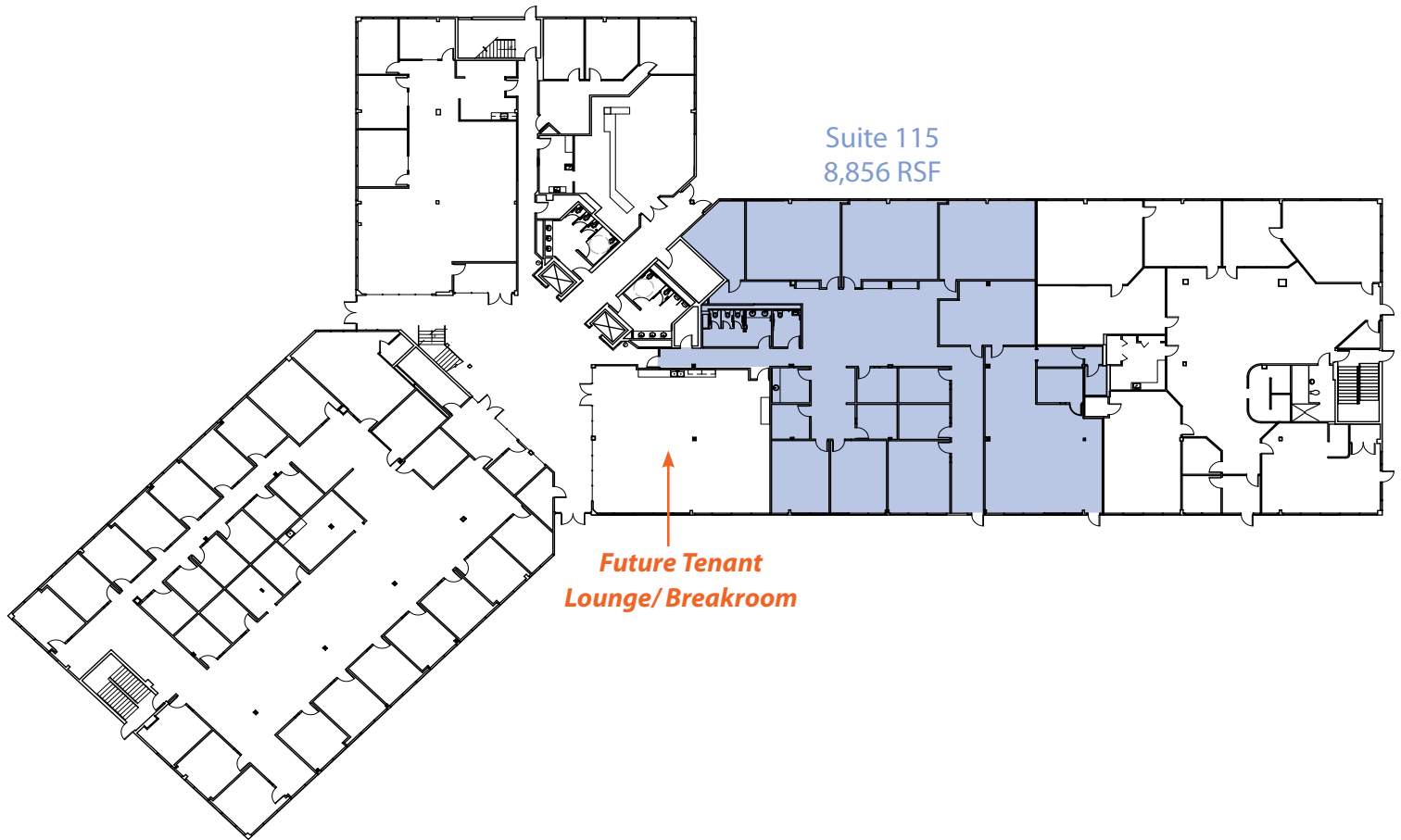
+1 813 444 0621

laurie.hynes@avisonyoung.com

avisonyoung.com

First Floor

Sunforest I
5130 Sunforest Drive
Tampa, FL 33634



**Get more
information**

Clay Witherspoon
Managing Director | Principal
+1 813 444 0626

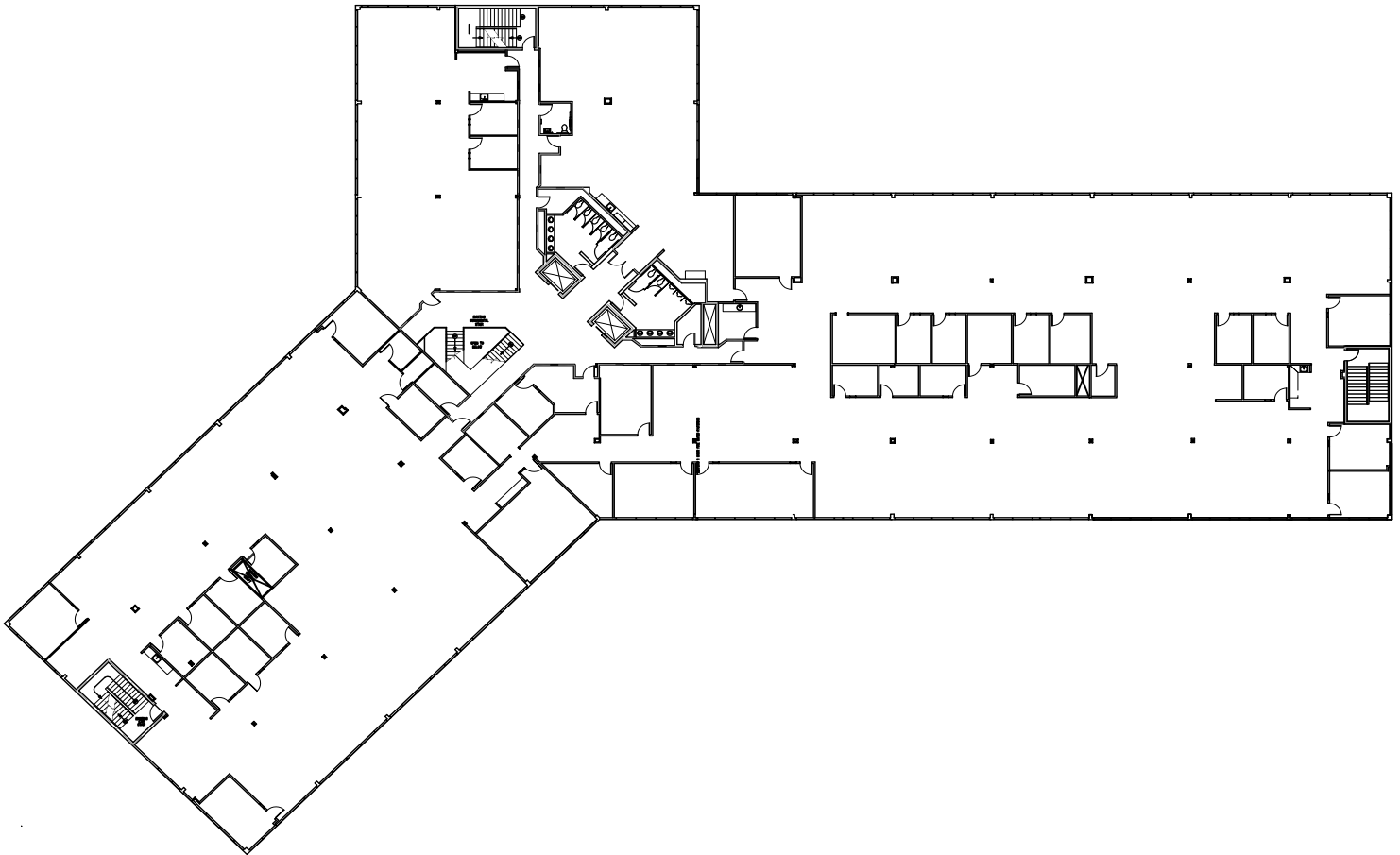
Laurie Hynes
Sr. Client Services Coordinator
+1 813 444 0621

**AVISON
YOUNG**

Second Floor

38,093 RSF

Sunforest I
5130 Sunforest Drive
Tampa, FL 33634



**Get more
information**

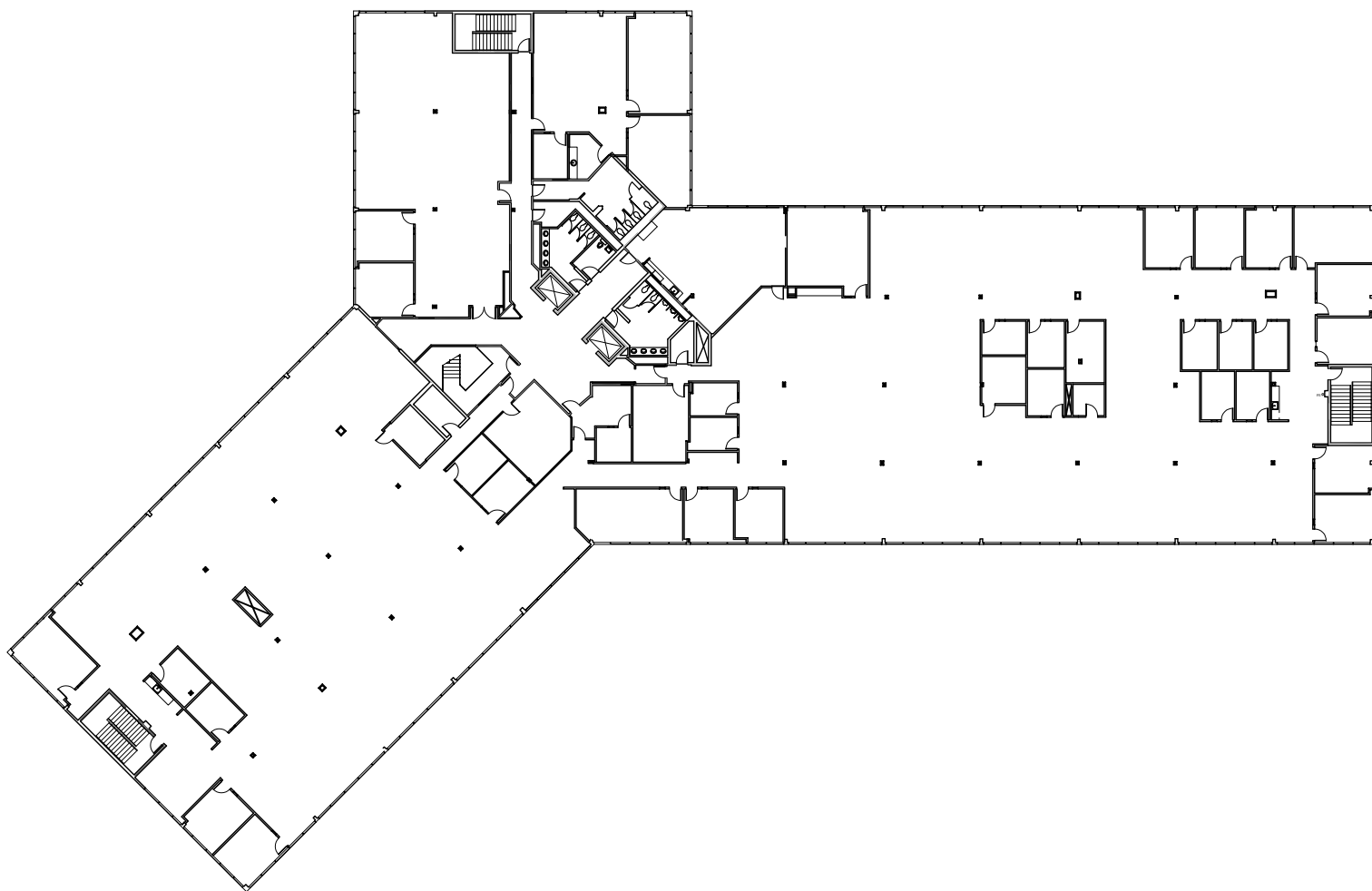
Clay Witherspoon
Managing Director | Principal
+1 813 444 0626

Laurie Hynes
Sr. Client Services Coordinator
+1 813 444 0621

**AVISON
YOUNG**

Third Floor 37,924 RSF

Sunforest I
5130 Sunforest Drive
Tampa, FL 33634



**Get more
information**

Clay Witherspoon
Managing Director | Principal
+1 813 444 0626

Laurie Hynes
Sr. Client Services Coordinator
+1 813 444 0621

**AVISON
YOUNG**

Location Map

Sunforest I
5130 Sunforest Drive
Tampa, FL 33634



**Get more
information**

Clay Witherspoon
Managing Director | Principal
+1 813 444 0626

Laurie Hynes
Sr. Client Services Coordinator
+1 813 444 0621

**AVISON
YOUNG**