

Suite A

2526 Plantation Center Dr, Matthews, NC 28105

Presented by
Helya Properties LLC.

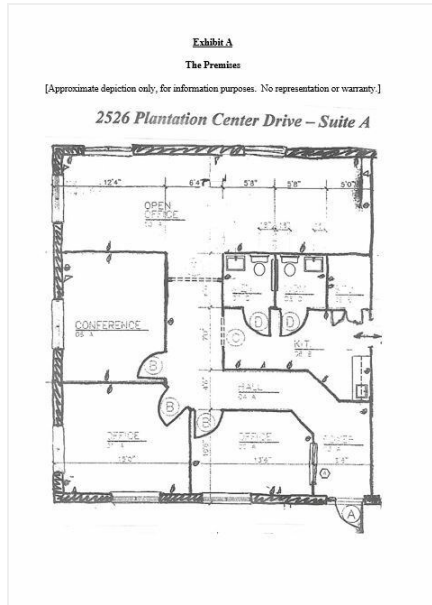


Price: \$29.00 /SF/YR

Office condo for lease in Matthews/Blakeney Area. 1,400 square feet with 3 private offices, 2 restrooms, break room. Within Plantation Professional Center and walking distance to restaurants, shopping, Brace Family YMCA, banking. New interchange with I-485 coming soon. ADA compliant. Water and dumpster access included in HOA/ lease. Owner covers TICAM. 3, 5 or 10 year lease terms available.

Suite A

2526 Plantation Center Dr, Matthews, NC 28105



Updated wood floors
Close to shopping and restaurants
Updated LED lighting
Easy on off 485 access



Mark W Easterling

Mark.Easterling@daimlertruck.com

(313) 408-9273

Helya Properties LLC.

2526 Plantation Center Dr
Matthews, NC 28104

Suite A

2526 Plantation Center Dr, Matthews, NC 28105

Suite A

2526 Plantation Center Dr, Matthews, NC 28105



Other



2nd Office

Major Tenant Information

Tenant	SF Occupied	Lease Expired
Financial Services Company	-	
Grove Manor Llc	-	
Iagnemma P Michael	-	
Metal Marketing	-	
OPC	-	April 2027
Scope Architectural Consulting	-	
Southern Dynamic Engineering and design	-	February 2026

2526 Plantation Center Dr, Matthews, NC 28105



Back Office area

Listing space

1st Floor Ste A

Space Available	1,400 SF
Rental Rate	\$29.00 /SF/YR
Date Available	April 01, 2025
Service Type	Modified Gross
Built Out As	Standard Office
Space Type	Relet
Space Use	Office
Lease Term	3 - 5 Years

Suite A

2526 Plantation Center Dr, Matthews, NC 28105

Property Photos



Kitchen / Bathroom area



Front Corner Office

Suite A

2526 Plantation Center Dr, Matthews, NC 28105

Property Photos



Entry office / reception area



Hall

Suite A

2526 Plantation Center Dr, Matthews, NC 28105

Property Photos



Entry Hall / Reception



Bathroom

Suite A

2526 Plantation Center Dr, Matthews, NC 28105

Location

