

# Y Mountain Land

905 N Terrace Drive | Provo, UT

**FOR SALE**



## PROPERTY HIGHLIGHTS

- 6.493 Acres
- Incredible Views of Utah County
- Located Near Y Mountain Trailhead
- \$77,000/Acre
- County Parcel #'s: 22:006:0165, 22:006:0166, 22:006:0167, 22:006:0168, 20:080:0007 and 20:080:0028

**SALE PRICE:**  
**\$500,000**



**Jon Anderson**  
President/ Principal Broker  
jon@andersoncrg.com

**(801) 472-1000**

**Chase Bryan**  
Executive Vice President  
chase@andersoncrg.com

**(801) 425-3655**

**Ashley Jensen**  
Principal Broker  
ashley@autahome.com

**(801) 830-1717**

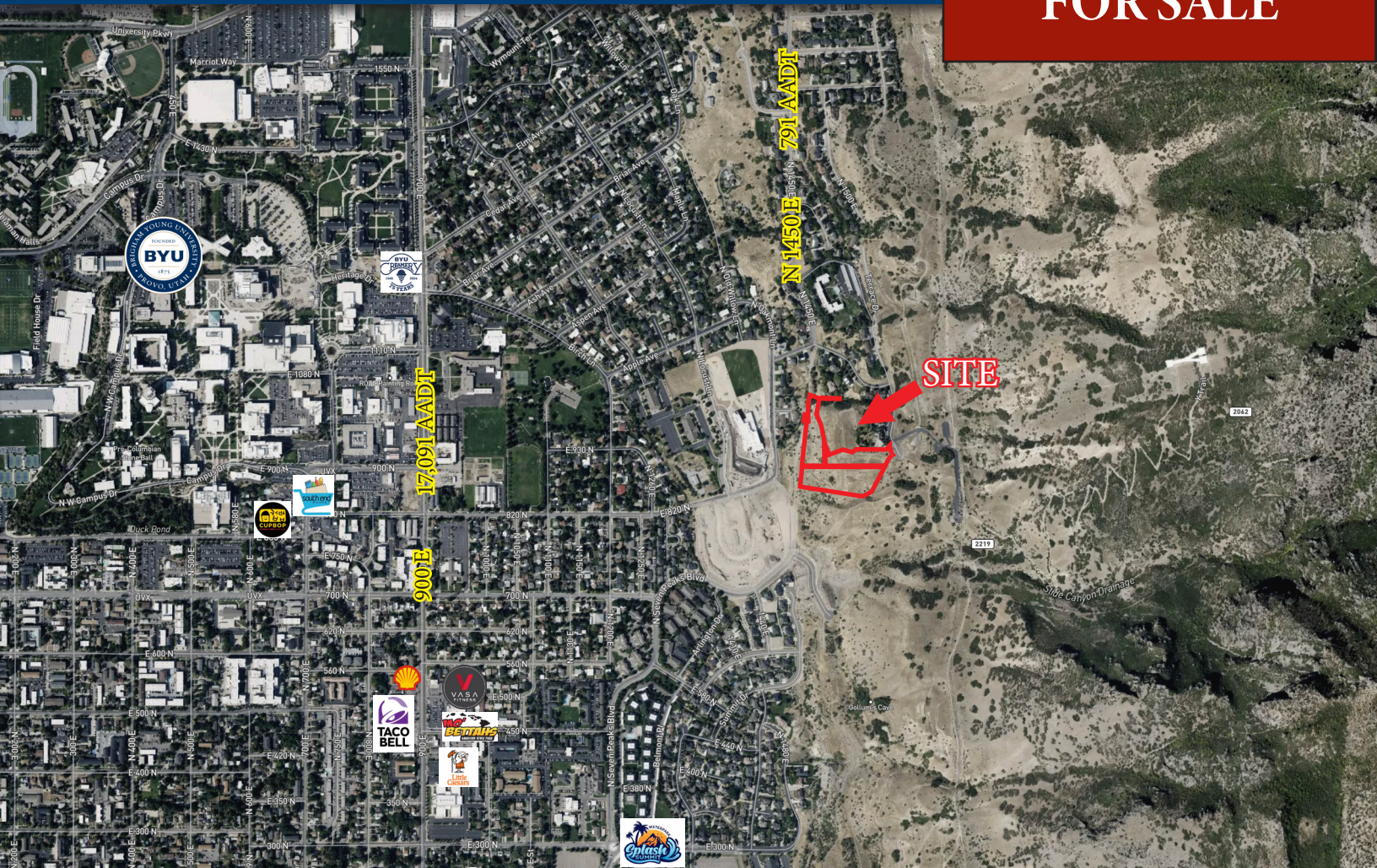
The offering is presented solely for informational purposes and is submitted subject to errors, omissions, change of price, rental or other terms, withdrawal without notice, and to any special listing conditions imposed by the seller. No warranty of representation, express or implied, is made as to the accuracy of the information contained herein and buyers and tenants are encouraged to conduct their own due diligence and research regarding the property.



# Y Mountain Land

905 N Terrace Drive | Provo, UT

**FOR SALE**



## DEMOGRAPHICS

	1 MILE	3 MILE	5 MILE
Households			
2023	3,839	29,084	49,064
Population			
2023	15,762	96,778	159,950
Income			
2023	\$41,553.74	\$56,618.22	\$68,535.05



**Jon Anderson**  
President/ Principal Broker  
jon@andersoncrg.com  
(801) 472-1000

**Chase Bryan**  
Executive Vice President  
chase@andersoncrg.com  
(801) 425-3655

**Ashley Jensen**  
Principal Broker  
ashley@autahome.com  
(801) 830-1717

The offering is presented solely for informational purposes and is submitted subject to errors, omissions, change of price, rental or other terms, withdrawal without notice, and to any special listing conditions imposed by the seller. No warranty of representation, express or implied, is made as to the accuracy of the information contained herein and buyers and tenants are encouraged to conduct their own due diligence and research regarding the property.