

1,827.3 sf

Unit 97

4,197.2 sf

Unit 101

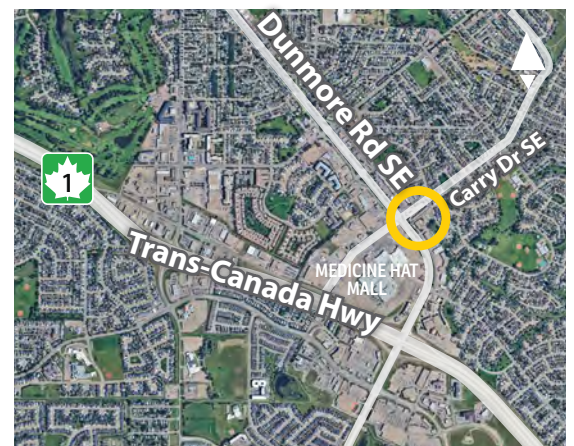


## RETAIL SPACE FOR LEASE

### Carry Drive Plaza

93-135 Carry Drive SE, Medicine Hat

- » In the heart of Medicine Hat's commercial hub.
- » Great visibility from Dunmore Road.
- » Ample parking.



FOR MORE  
INFORMATION OR  
TO VIEW, PLEASE  
CONTACT:

**Andrew Sherbut**, VICE PRESIDENT, PARTNER

C: 403-607-1819

O: 403-290-0178

asherbut@barclaystreet.com



TCN  
WORLDWIDE  
REAL ESTATE SERVICES

LOCAL  
EXPERTISE  
MATTERS



## AREA DEMOGRAPHICS

(3 km radius)



Population  
**35,709**



Median Age  
**41.7**



Average Household Income **\$101,240**

### Current Consumption / Household



**\$12,985**  
FOOD



**\$5,737**  
HEALTH CARE



**\$4,156**  
RECREATION



**\$1,825**  
PERSONAL CARE

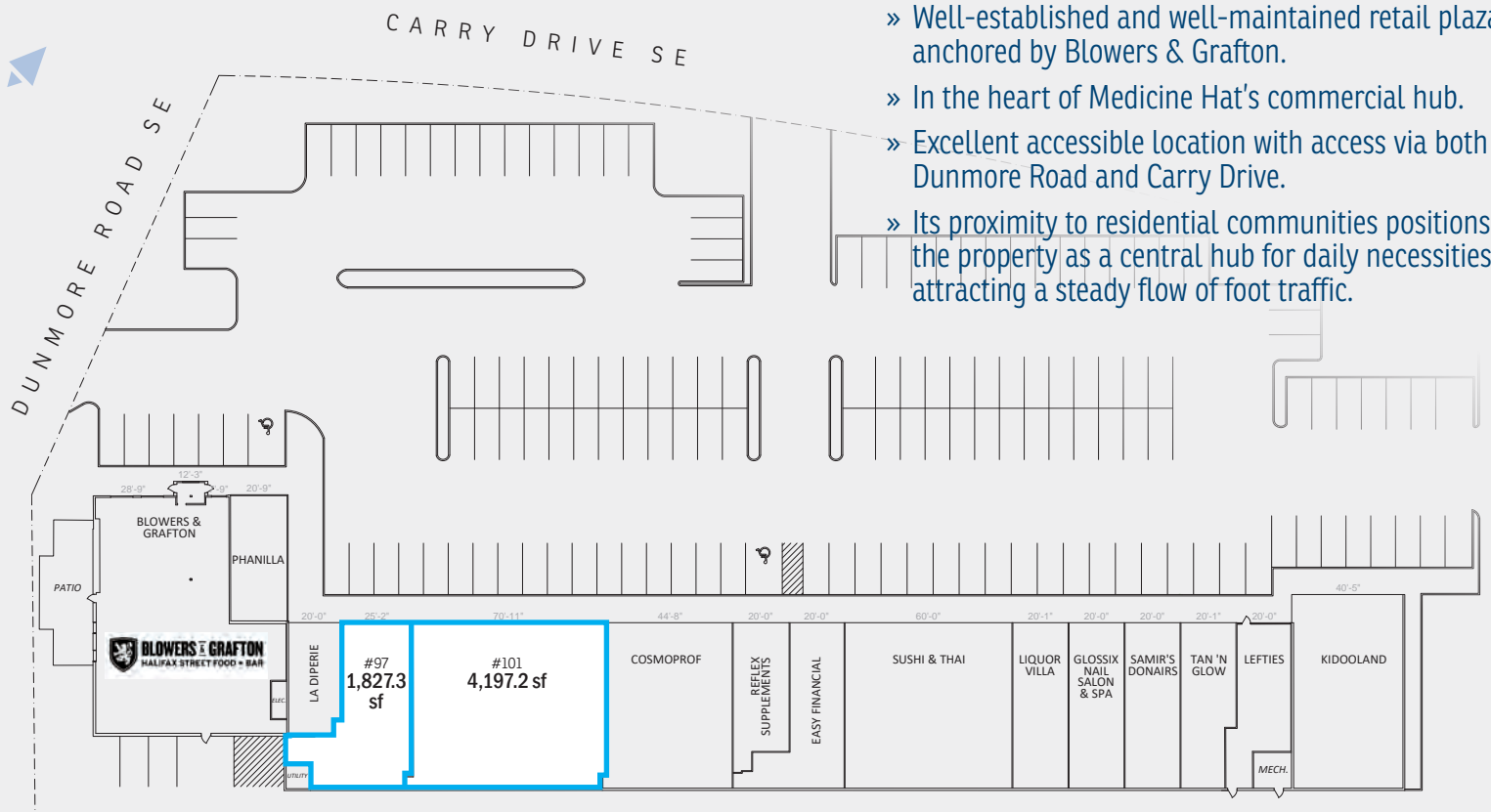


**\$3,600**  
LIQUOR/TOBACCO



**\$2,610**  
CLOTHING

Source: Statistics Canada



- » Well-established and well-maintained retail plaza anchored by Blowers & Grafton.
- » In the heart of Medicine Hat's commercial hub.
- » Excellent accessible location with access via both Dunmore Road and Carry Drive.
- » Its proximity to residential communities positions the property as a central hub for daily necessities, attracting a steady flow of foot traffic.

## LEASE INFORMATION

MUNICIPAL ADDRESS:  
93-135 Carry Drive SE, Medicine Hat

ZONING: MU - Mixed Use

AVAILABLE FOR LEASE:  
1,827.3 sq. ft. - Unit 97  
4,197.2 sq. ft. - Unit 101  
• Demisable

~~2,817 sq. ft. - Unit 135 - LEASED~~

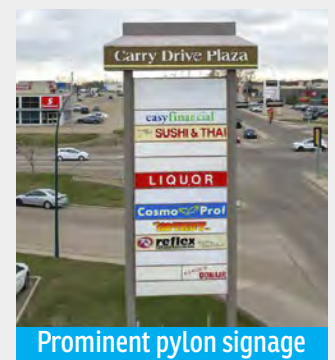
AVAILABILITY: Immediate

PARKING: 148 surface stalls

PYLON SIGNAGE:  
Available at market rate

OP. COSTS AND TAXES:  
\$10.00 per sq. ft. (est., 2026)

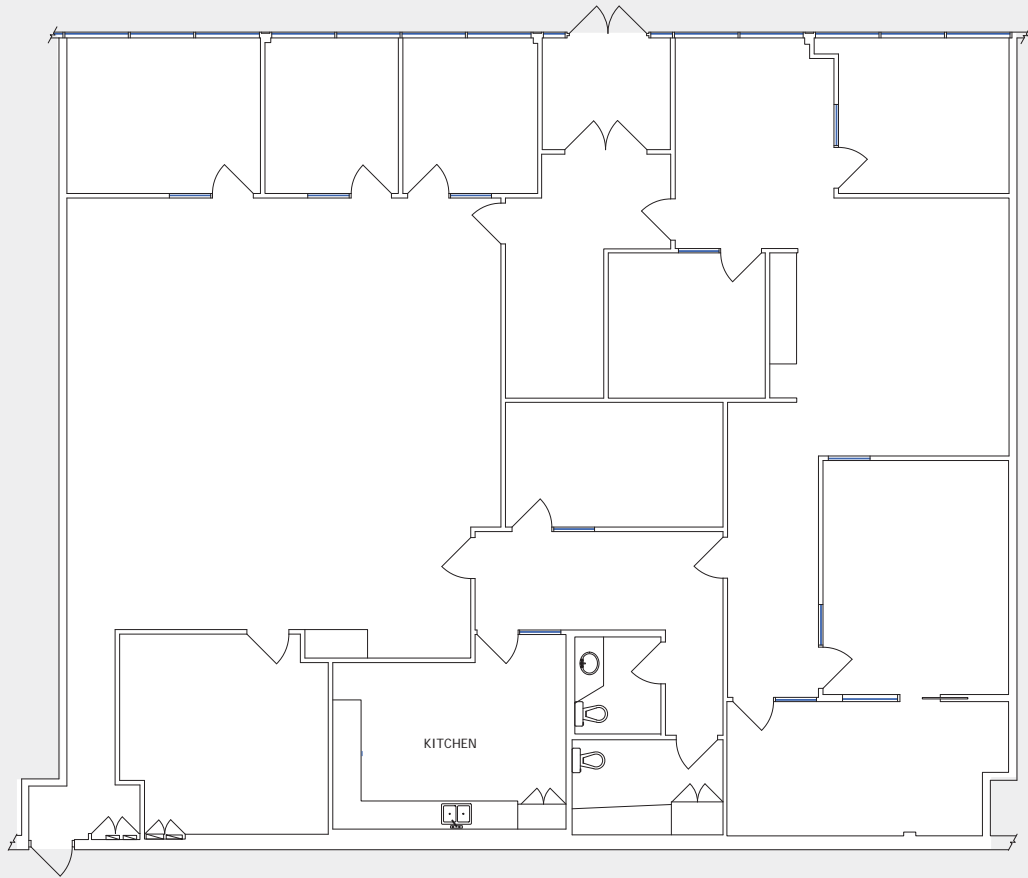
NET RENT: Market



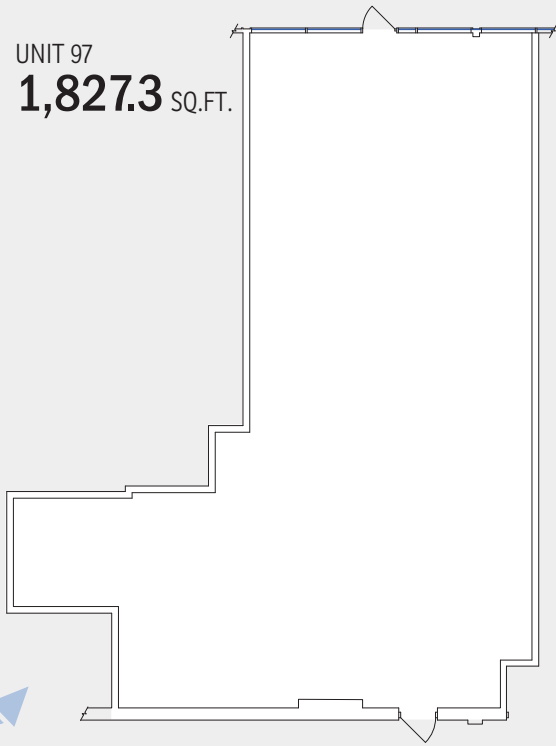
Prominent pylon signage



UNIT 101  
**4,197.2** SQ.FT.  
DEMISABLE



UNIT 97  
**1,827.3** SQ.FT.



UNIT 135  
**2,817** SQ.FT.



The information contained herein has been gathered from sources deemed reliable, but is not warranted as such and does not form any part of any future contract. This offering may be altered or withdrawn at any time without notice.

Copyright © 2026 Barclay Street Real Estate Ltd. All rights reserved.



LOCAL EXPERTISE MATTERS