

J.B. Parrish, Inc.

2155 DELWARE AVE, SANTA CRUZ, CA



44,168 SF OFFICE R&D BUILDING

TABLE OF CONTENTS

03	Executive Summary
04	Property Photos
09	Aerial Map
10	Location Map
11	Area Overview
12	JR Parrish
13	Disclaimer

EXCLUSIVELY LISTED BY

Randy Parker | DRE #00975223
831-234-0702

Carol Lezin | DRE #00878937
831-247-2610

JR Parrish, Inc.
Commerical Real Estate

JR Parrish, Inc.



EXECUTIVE SUMMARY

2155 Delaware Ave
Santa Cruz, CA 95060

LISTING PRICE

9,000,000.



BUILDING



PARCEL
SIZE



GENERAL
INDUSTRIAL

PROPERTY DESCRIPTION

2155 Delaware Avenue is a 2 story 44,168 SF building that sits in a very unique corner of the world. The Westside of Santa Cruz is teeming with energy and creativity and surrounded by a talented employment base offering world class ideas and dedication to purpose. Walking distance to Natural Bridges Beach and a minute to the newly installed Rail Trail Corridor (RTC).

Your employees will know ... and fully appreciate this working environment. The Second floor at 2155 Delaware Avenue offers immaculately improved space and ocean views, turn key, available and ready for occupancy. The Ground floor consists of 22,000 SF of Flex space ready for office, lab, bio tech, light assembly and a multitude of uses allowed under the City of Santa Cruz's generous IG zoning.

2155 Delaware Avenues is a solid building, well maintained, great location, ample parking and easily accessible to other modes of transportation. This is a generational opportunity to purchase a permanent HQ for a thriving entity. Join the flow Let your people create and let your organization thrive at 2155 Delaware Ave on the Westside of Santa Cruz.

PROPERTY DETAILS

APN	003-161-57
Address	2155 Delaware Ave
County	Santa Cruz
Market	Bay Area
SubMarket	Santa Cruz County
Building Size	44,168 SF
Land Acres	2.7 Acres
Ownership Type	Fee Simple



PROPERTY FEATURES

Number of Units	2 Multiple Spaces
Number of Parcels	1
Zoning Type	IG- General Industrial
Number of Stories	2
Number of Buildings	1
Parking Ratio	4:1000
Ceiling Height	9 ft

FINANCIAL SUMMARY

Offering Price	9,000,000.
Prise PSF	\$203.77

2155 Delaware Ave

2155 Delaware Avenue

1st Floor

100 UNIVERSAL AUDIO

150 CCOF

175

2nd Floor

200

225

250

← ELEVATOR



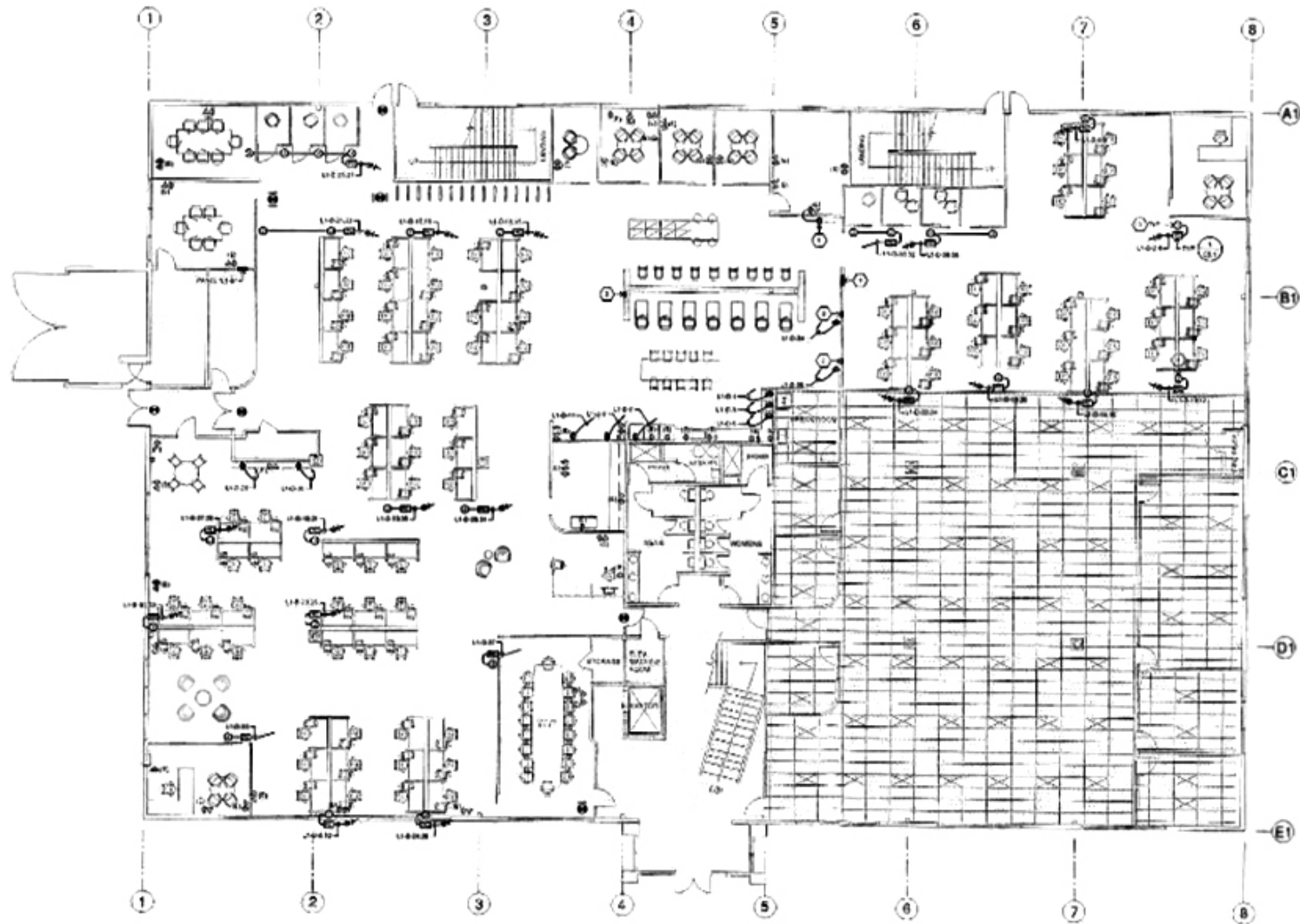
2155 Delaware Ave



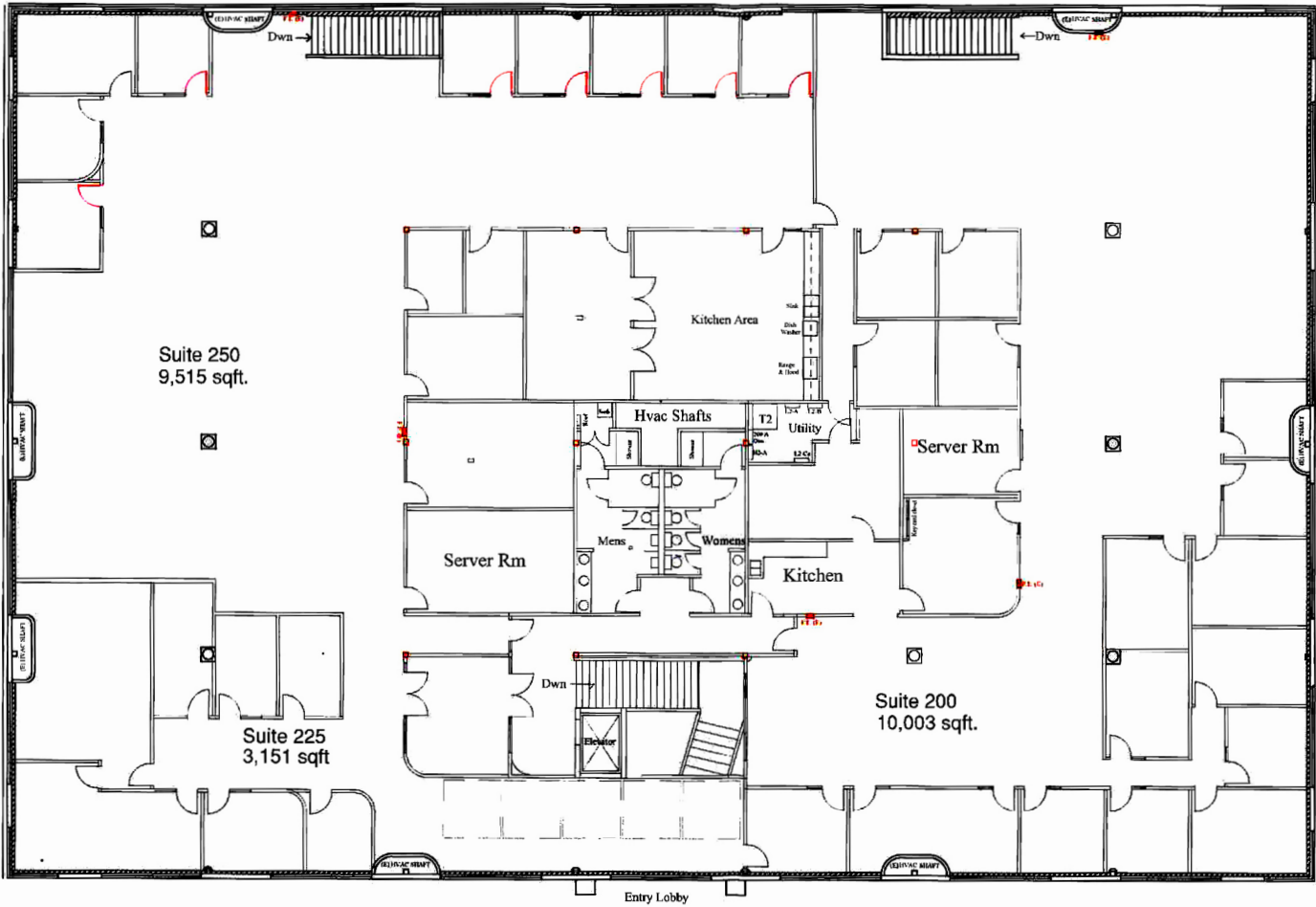
LOCATION MAP



FLOOR PLAN - 1st FLOOR



FLOOR PLAN - 2nd FLOOR



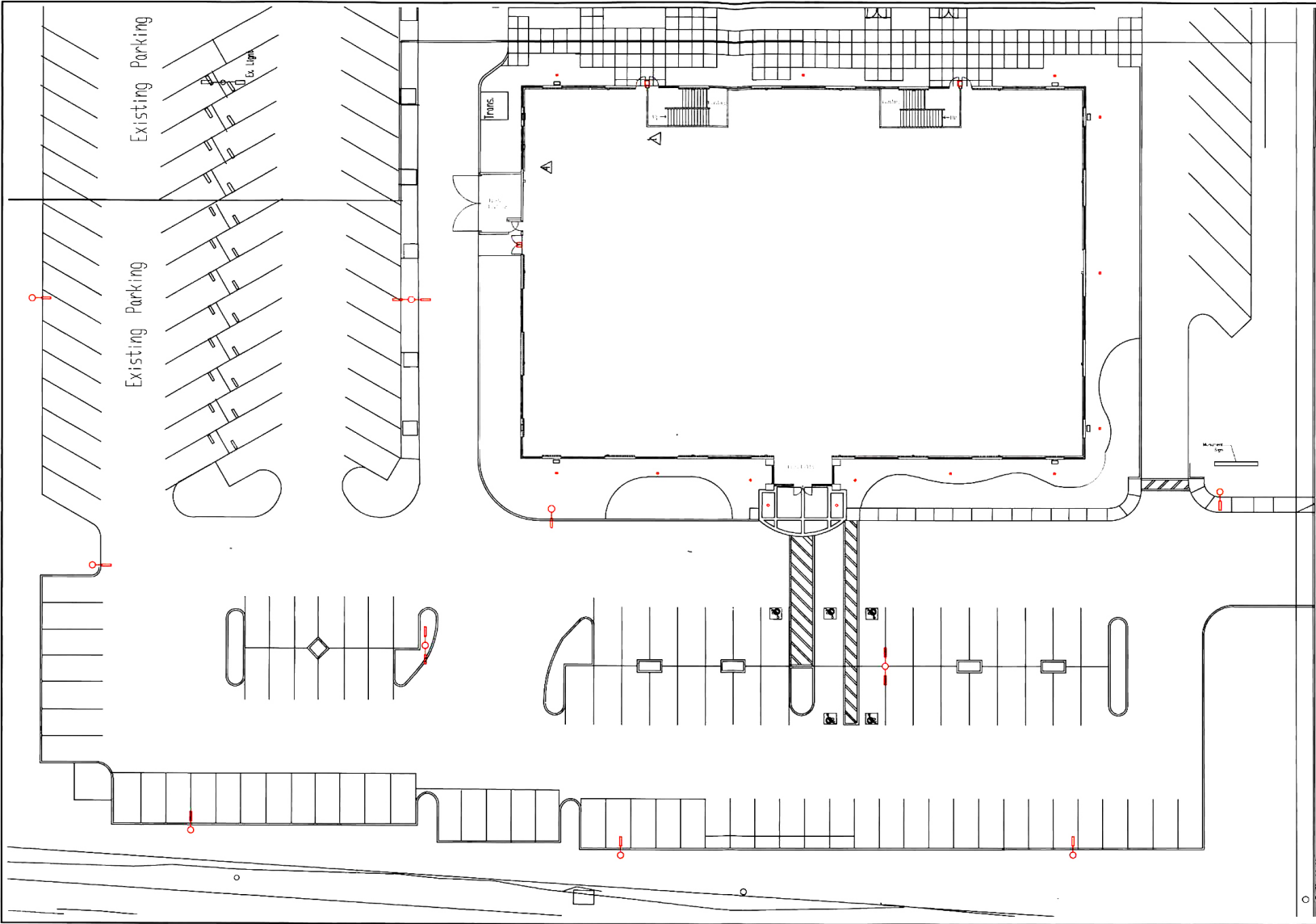
Wave Crest Development
530 Chestnut Street
Santa Cruz, CA 95060
(831) 423-2100

2nd Floor Layout
2155 Delaware Avenue
Santa Cruz, CA 95060

Date: 09-22-15
Scale: 1/8" = 1'
Drawn: ST

A 1

SITE LAYOUT



SITE LAYOUT
2155 Delaware Avenue
Santa Cruz, CA 95060

Wave Crest Development
530 Chestnut Street
Santa Cruz, CA 95060
(831) 423-2100

Date: 06-20-15
Scale:
Drawn: ST

A 1

DISCLAIMER

JR Parrish, Inc (JRP) hereby advises all prospective purchasers of property as follows:

All materials and information received or derived from JRP and its directors, officers, agents, advisors, affiliates and or any third party sources are provided without representation or warranty as to completeness, veracity, or accuracy, condition of the property, compliance or lack of compliance with applicable governmental requirements, developability or suitability, financial performance of the property, projected financial performance of the property for any party's intended use or any and all other matters. Neither JRP and its directors, officers, agents, advisors, or affiliates makes any representation or warranty, express or implied, as to accuracy or completeness of the any materials or information provided, derived, or received. Materials and information from any source, whether written or verbal, that may be furnished for review are not a substitute for a party's active conduct of its own due diligence to determine these and other matters of significance to such party. JRP will not investigate or verify any such matters or conduct due diligence for a party unless otherwise agreed in writing.

EACH PARTY SHALL CONDUCT ITS OWN INDEPENDENT INVESTIGATION AND DUE DILIGENCE. Any party contemplating or under contract or in escrow for a transaction is urged to verify all information and to conduct their own inspections and investigations including through appropriate third party independent professionals selected by such party.

EXCLUSIVELY LISTED BY

Randy Parker | DRE #00975223
831-234-0702

Carol Lezin | DRE #00878937
831-247-2610

The logo for JR Parrish, Inc. is written in a stylized, cursive script. The letters are black and have a fluid, handwritten appearance. The 'J' and 'R' are particularly large and prominent, with the 'Parrish, Inc.' part following in a similar but slightly smaller script.